



○ PERSPECTIVE

	<b>CITY ENGINEERS OFFICE</b> <b>CITY OF HIMAMAYLAN</b>	Prepared by: EDELIZ G. SANQUILAY <small>Architect III</small>	Checked: REIGNHEL JOY BEDAURE <small>Architect I</small>	Project Title: <b>IMPROVEMENT OF          ADMIN BUILDING</b>	Recommending Approval:  AKMAR J. JAVVA M. Ed. <small>HEAD, PLANNING AND DEVELOPMENT</small>	Approved By:  GENESIS G. CAMARISTA, Ph.D. <small>CAMPUS ADMINISTRATOR</small>	Sheet Contents:	Sheet No. <div style="text-align: center;"> </div>
--	---	---	--	---	--	--	-----------------	---



**CITY ENGINEERS OFFICE**  
**CITY OF HIMAMAYLAN**

Prepared by:  
**EDELIZ G. BANGULAY**  
Architect

Checked:  
**REGIE CALVO**  
Asst. City Engineer

REIGNHEL JOB BEDAURE  
Architect

Project Title:

**IMPROVEMENT OF  
ADMIN BUILDING**

Location: Brgy. Carado-an, Himamaylan City

Recommending Approval:

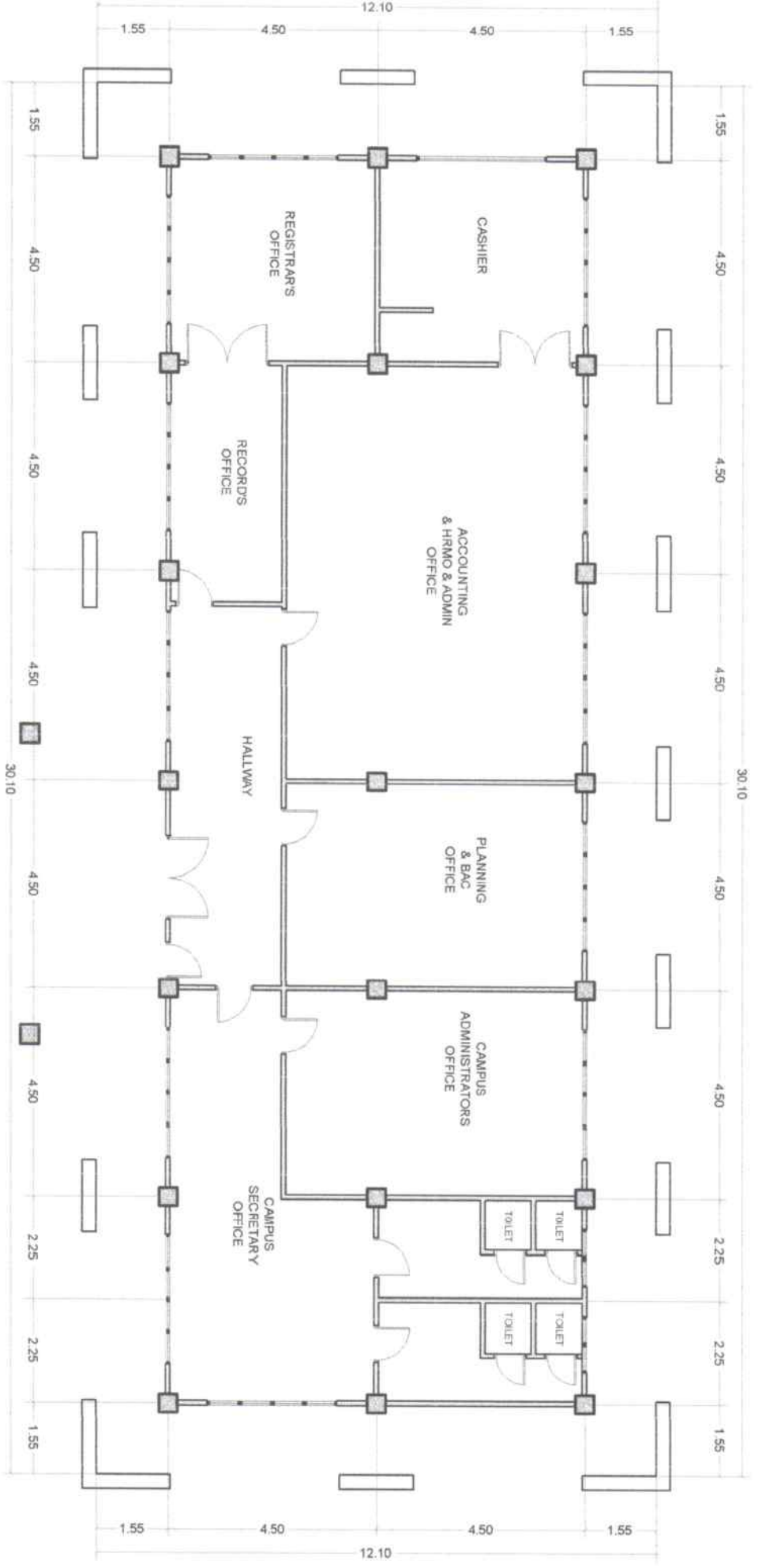
*[Signature]*  
**ALMAR J. LAYVA M.Ed.**  
HEAD, PLANNING AND DEVELOPMENT

Approved By:

*[Signature]*  
**GENESIS G. CAMARISTA, Ph.D.**  
CAMPUS ADMINISTRATOR

Sheet Contents:

Sheet No.



**EXISTING FLOOR PLAN**  
SCALE: 1:110MTRS



**CITY ENGINEERS OFFICE**  
**CITY OF HIMAMAYLAN**

Prepared by:

EDELIZ G. BANGUILLAY  
Architect

Checked:

REIGNHEL J. BERBAURE  
Architect

Project Title:

**IMPROVEMENT OF  
ADMIN BUILDING**

Recommending Approval:

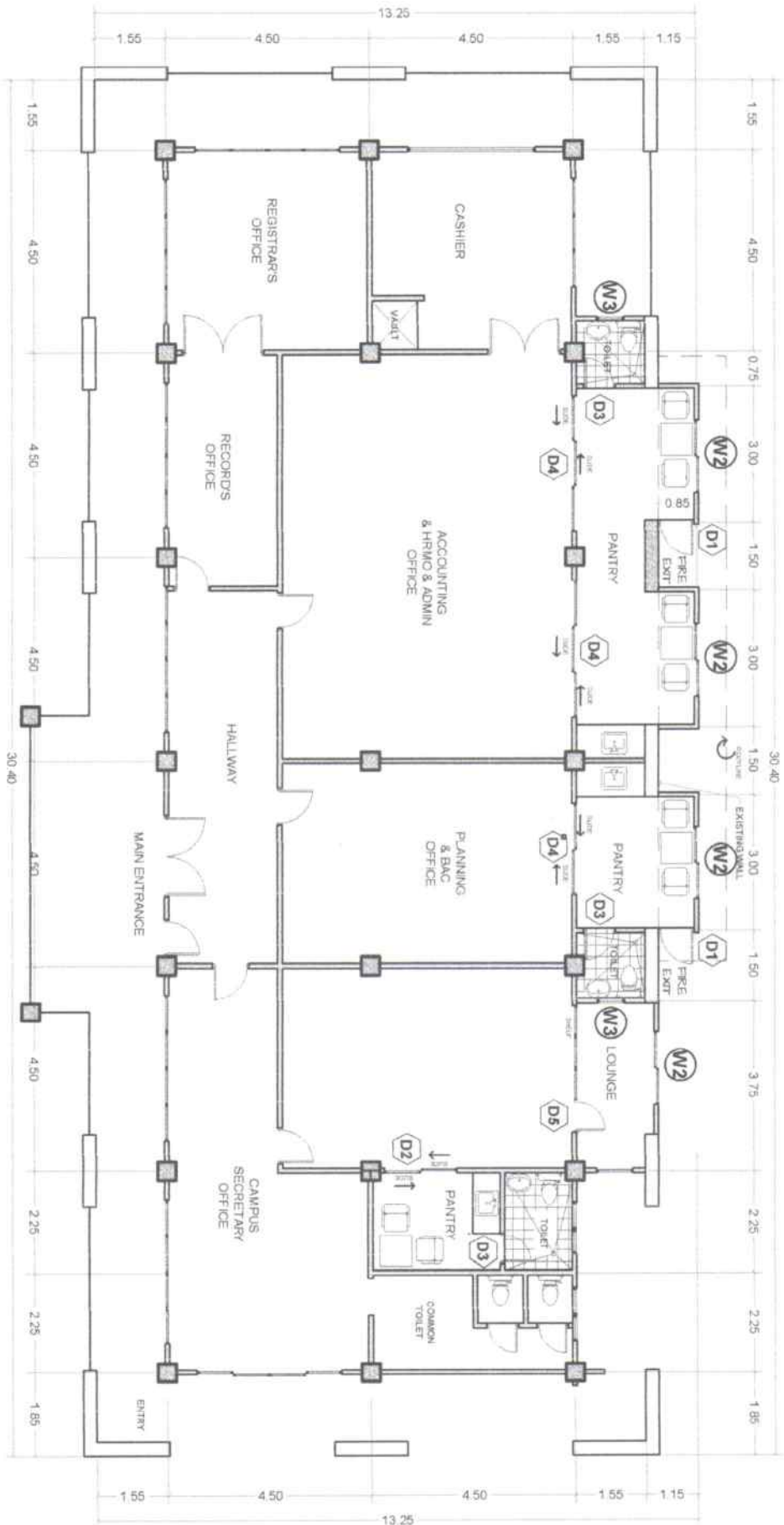
ALMAR J. JAVVA MED.  
HEAD, PLANNING AND DEVELOPMENT

Approved By:

GENESIS G. CAMARISTA, Ph.D.  
CAMPUS ADMINISTRATOR

Sheet Contents:

Sheet No.



**PROPOSED FLOOR PLAN**  
SCALE: 1:120MTS



**CITY ENGINEERS OFFICE  
CITY OF HIMAMAYLAN**

Prepared by:

EDELIZ G. SANDOJILLAY  
Architect III

Checked by:

REJES CALVO  
Asst. City Engineer

Project Title:

**IMPROVEMENT OF  
ADMIN BUILDING**

Recommending Approval:

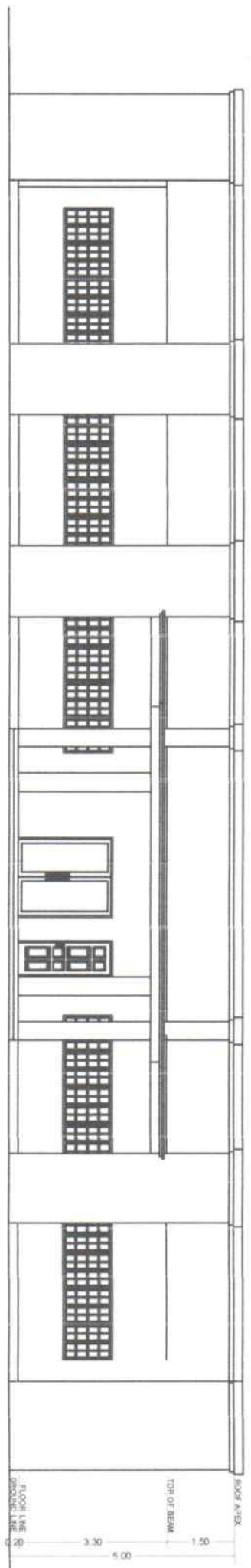
ALMAR J. JANA MED.  
HEAD, PLANNING AND DEVELOPMENT

Approved By:

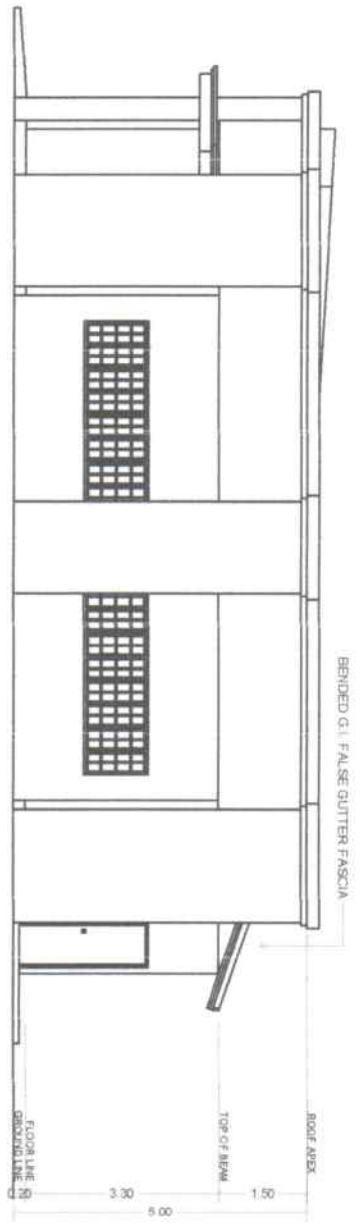
GENESIS G. DAMARISTA, Ph.D.  
CAMPUS ADMINISTRATOR

Sheet Contents:

Sheet No.



**FRONT ELEVATION**  
SCALE: 1:120MTS



**RIGHT-SIDE ELEVATION**  
SCALE: 1:120MTS



**CITY ENGINEERS OFFICE**  
**CITY OF HIMAMAYLAN**

Prepared by:

EDELTZ G. MANQUILAY  
Architect III

Checked:

REJIE Y. CALVO  
Asst. Engineer

Project Title:

**IMPROVEMENT OF  
ADMIN BUILDING**

Recommending App'val:

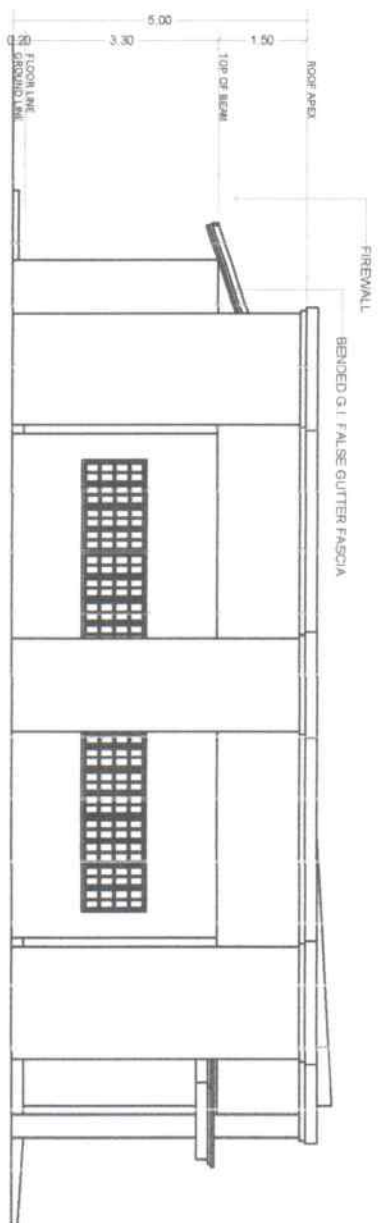
ALMAR J. JAVIN MED.  
HEAD, PLANNING AND DEVELOPMENT

Approved By:

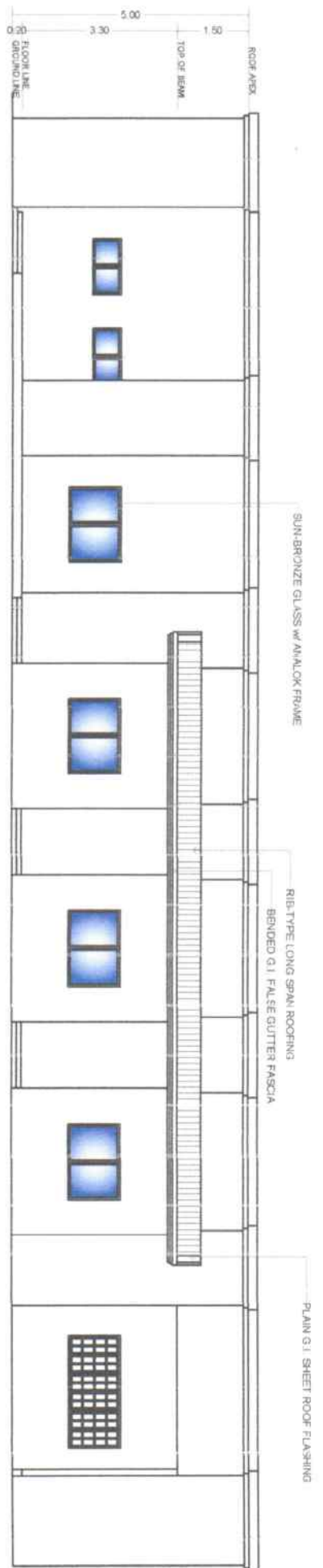
GENESIS G. CAMARISTA, Ph.D.  
CAMPUS ADMINISTRATOR

Sheet Contents:

Sheet No.



**LEFT-SIDE ELEVATION**  
SCALE: 1:120MTS



**REAR ELEVATION**  
SCALE: 1:120MTS

### SCHEDULE OF DOORS

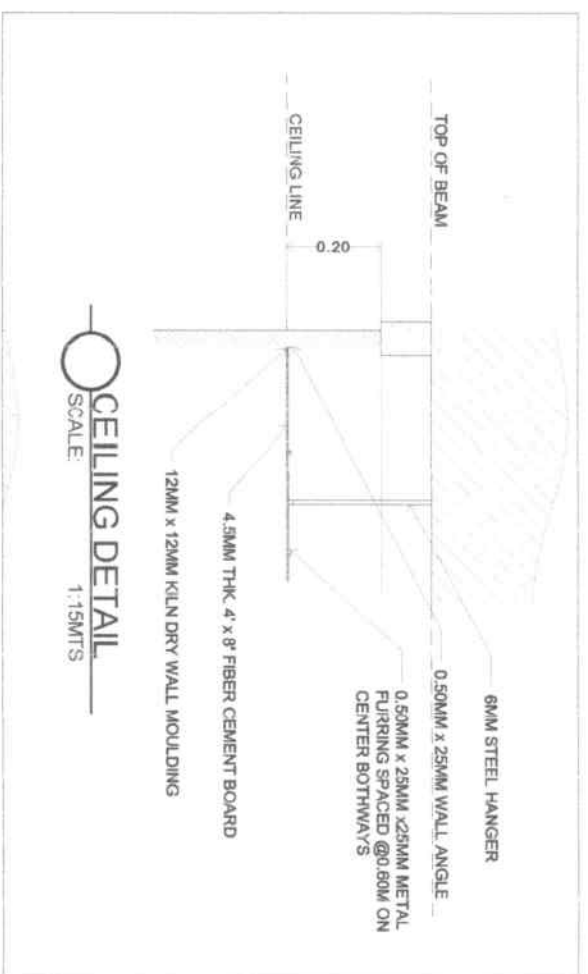
<p>D1</p>	<p>D2</p>	<p>D3</p>	<p>D4</p>
MATERIAL: HOLLOW-CORE WOOD DOOR w/ COMPLETE ACCESSORIES TYPE: PANEL-TYPE DOOR LOCATION: MAIN ENTRANCE, STORAGE, SERVER ROOM & PANTRY DIMENSION: (0.80M x 2.10M) UNITS: SIX (6) SETS: ONE (1)	MATERIAL: 6MM THK. GLASS DOOR w/ ANALOK FRAME TYPE: SLIDING-TYPE DOOR LOCATION: CAMPUS ADMINISTRATOR'S PANTRY DIMENSION: (0.80M x 2.10M) UNITS: ONE (1) SETS: FIVE (5)	MATERIAL: UPVC DOOR w/ LOUVRE & COMPLETE ACCESSORIES TYPE: PANEL-TYPE DOOR LOCATION: TOILETS DIMENSION: (0.70M x 2.10M) UNITS: ONE (1) SETS: TWO (2)	MATERIAL: 6MM THK. GLASS DOOR w/ ANALOK FRAME TYPE: SLIDING-TYPE DOOR LOCATION: PANTRY DIMENSION: (1.00M x 2.10M) UNITS: TWO (2) SETS: FOUR (4)

### SCHEDULE OF DOORS

<p>D5</p>	MATERIAL: 6MM THK. GLASS WINDOW w/ ANALOK FRAME TYPE: PANEL-TYPE DOOR LOCATION: OFFICE DIMENSION: (0.80M x 2.10M) UNITS: ONE (1) SETS: ONE (1)
-----------	---

### SCHEDULE OF WINDOWS

<p>W1</p>	<p>W2</p>	<p>W3</p>
MATERIAL: 6MM THK. GLASS WINDOW w/ ANALOK FRAME TYPE: SLIDING-TYPE DOOR LOCATION: OFFICES DIMENSION: (0.80M x 1.10M) UNITS: THREE (3) SETS: THREE (3)	MATERIAL: 6MM THK. GLASS WINDOW w/ ANALOK FRAME TYPE: SLIDING-TYPE DOOR LOCATION: OFFICES DIMENSION: (0.80M x 1.10M) UNITS: TWO (2) SETS: FOUR (4)	MATERIAL: 6MM THK. GLASS WINDOW w/ ANALOK FRAME TYPE: AWNING-TYPE DOOR LOCATION: TOILETS DIMENSION: (0.60M x 0.60M) UNITS: ONE (1) SETS: TWO (2)



**CITY ENGINEERS OFFICE**  
**CITY OF HIMAMAYLAN**

Prepared by: **EDELIZ G. BANGJILAY**  
Checked: **REIGNHEE JOB BEDAURE**  
Asst. City Engineer: **REGEL CALVO**

Project Title: **IMPROVEMENT OF ADMIN BUILDING**  
Location: Brgy. Caradio-an, Himamaylan City

Recommending Approval: **ALMARIL JOVA MED.**  
HEAD, PLANNING AND DEVELOPMENT

Approved By: **GENESIS G. CAMARISTA, Ph.D.**  
CAMPUS ADMINISTRATOR

Sheet Contents: \_\_\_\_\_  
Sheet No: \_\_\_\_\_





**CITY ENGINEERS OFFICE**  
**CITY OF HIMAMAYLAN**

Prepared by:

EDLIZ S. BAYONILAY

Checked:

REIGNHEL J. B. BEDAURE  
Asst. City Engineer

Project Title:

**IMPROVEMENT OF  
ADMIN BUILDING**

Recommending Approval:

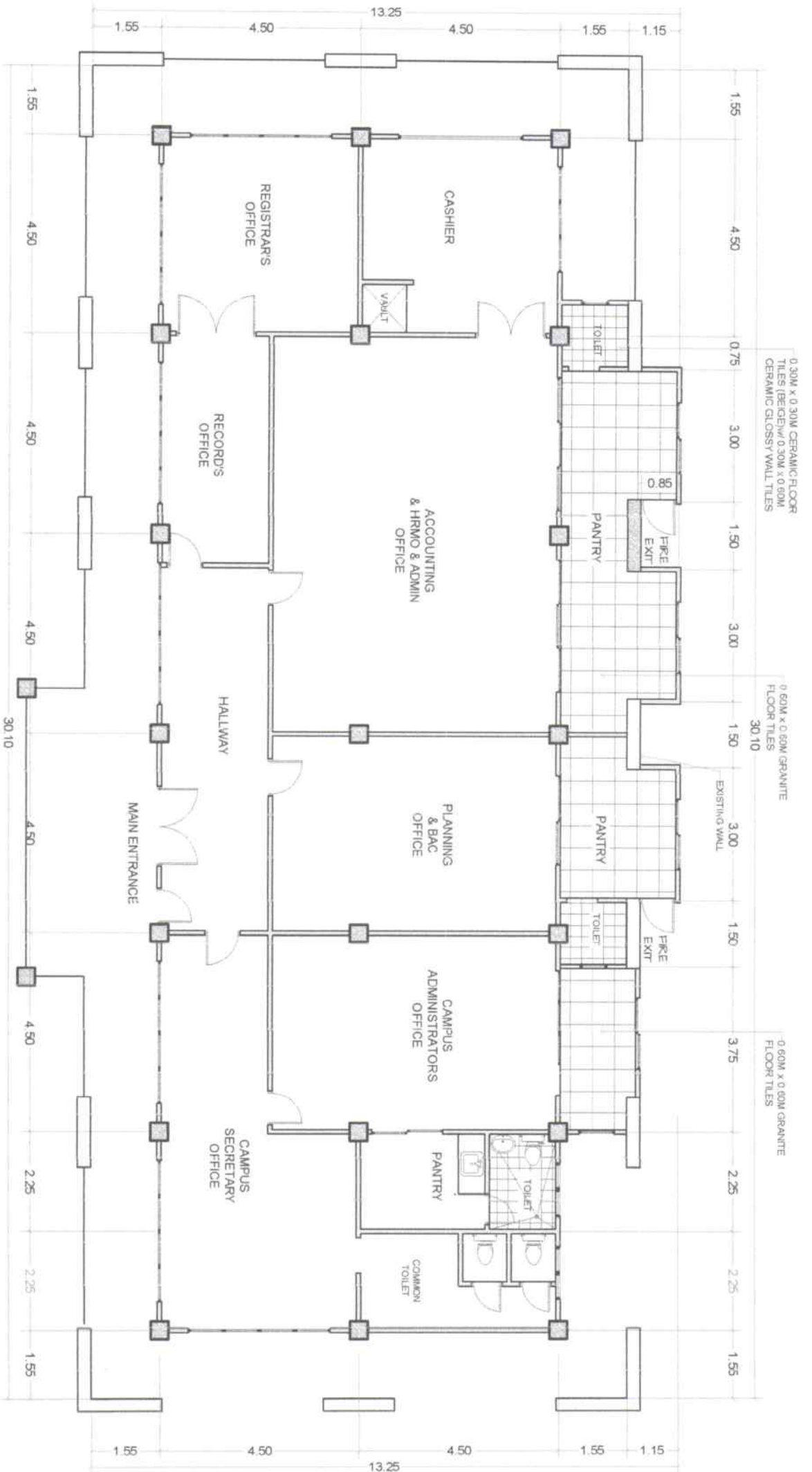
AMAR D. DAVA MED.  
HEAD, PLANNING AND DEVELOPMENT

Approved By:

GENESIS G. CAMARISTA, Ph.D.  
CAMPUS ADMINISTRATOR

Sheet Contents:

Sheet No.



**FLOOR & WALL TILE LAYOUT**  
SCALE: 1:120MTS



**CITY ENGINEERS OFFICE  
CITY OF HIMAMAYLAN**

Prepared by:

EDLIZ G. BANGOLILAY  
Asst. City Engineer III

Checked:

REINHOLD JOB BEDAURE  
Asst. City Engineer I

Project Title:

**IMPROVEMENT OF  
ADMIN BUILDING**

Recommending Approval:

ALMAR J. JAWA M.Ed.

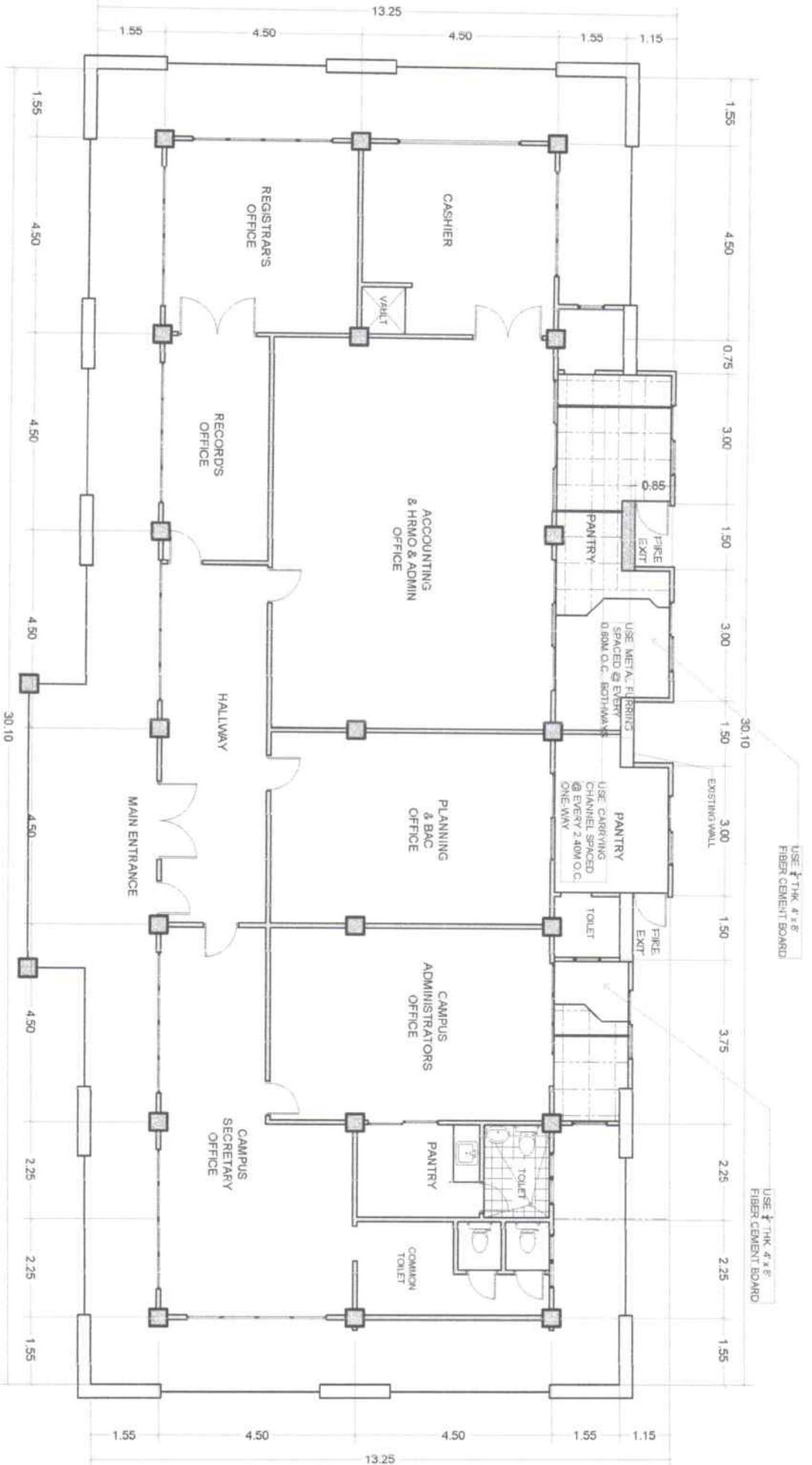
Approved By:

GENESIS G. CAMARISTA, Ph.D.

Sheet Contents:

Sheet No.

A-8  
8



**REFLECTED CEILING PLAN**  
SCALE 1:110MTS





**CITY ENGINEERS OFFICE  
CITY OF HIMAMAYLAN**

Prepared by:

EDELIZ G. BARRONJILAY  
Architect III

Project Title:

**IMPROVEMENT OF  
ADMIN BUILDING**

Recommending Approval:

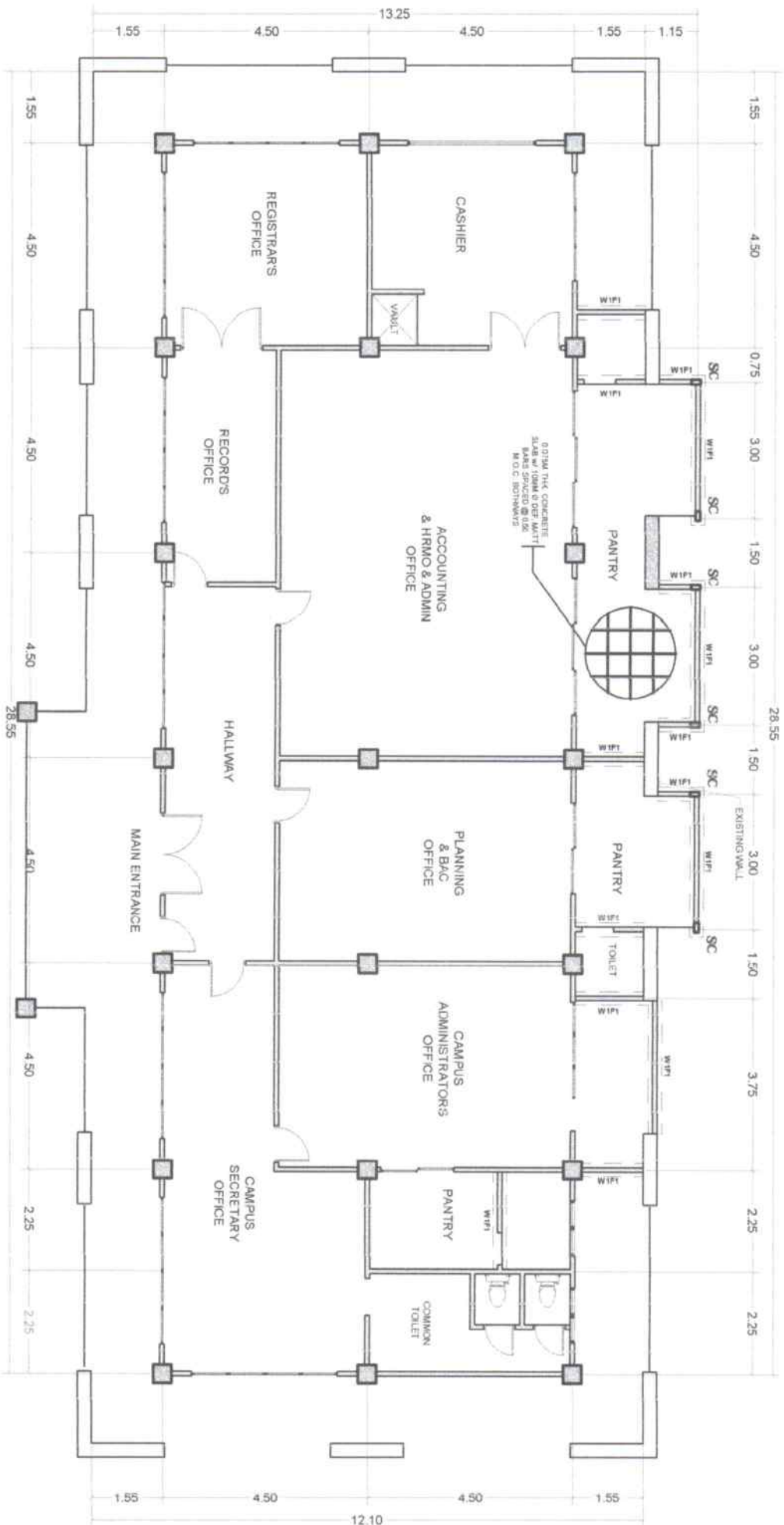
AKMAR J. LUYA M. ED.  
HEAD, PLANNING AND DEVELOPMENT

Approved By:

GENESIS G. CAMARISTA, Ph.D.  
CAMPUS ADMINISTRATOR

Sheet Contents:

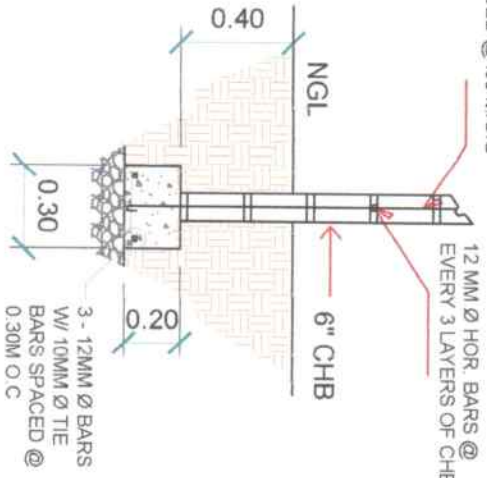
Sheet No.



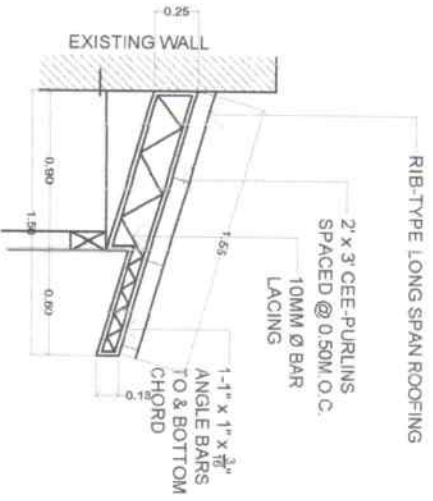
**FOUNDATION PLAN**  
SCALE: 1:120MTS

12 MM Ø VERT. BARS  
SPACED @ 60 M.O.C

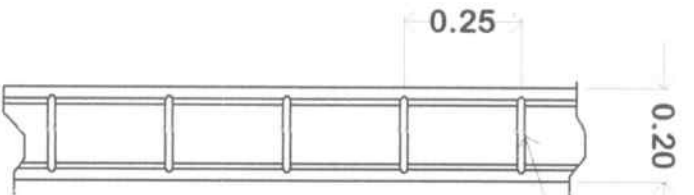
12 MM Ø HOR. BARS @  
EVERY 3 LAYERS OF CHB



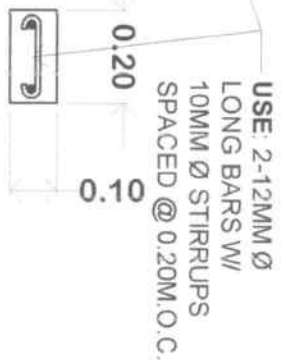
**OWF DETAIL**  
SCALE: 1:25MTS



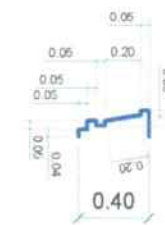
**RAFTER 2 DETAIL**  
SCALE: 1:40MTS



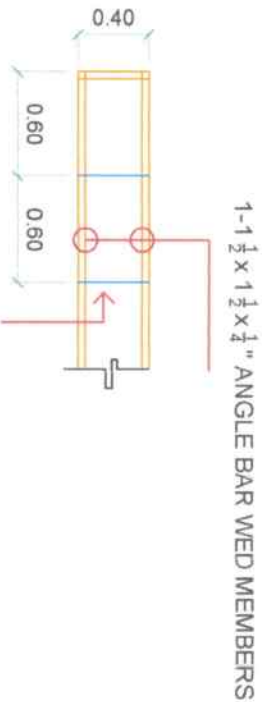
**STIFFENER DETAIL**  
SCALE: 1:15MTS



**INTEL BEAM DETAIL**  
SCALE: 1:120MTS



**FASCIA FRAME DETAIL**  
SCALE: 1:40MTS



**FASCIA FRAME DETAIL**  
SCALE: 1:40MTS



**CITY ENGINEERS OFFICE**  
CITY OF HIMAMAYLAN

Prepared by:  
**EDELIZ G. BAYANQUILAY**  
Architect  
Checked:  
**REGIE L. CALVO**  
Asst. City Engineer

Project Title:  
**IMPROVEMENT OF  
ADMIN BUILDING**  
Location: Bigy. Carado-an, Himamaylan City

Recommending Approval:  
**ALMAR J. JAVINA M. ED.**  
HEAD, PLANNING AND DEVELOPMENT

Approved By:  
**GENESIS G. CAMARISTA, Ph.D.**  
CAMPUS ADMINISTRATOR

Sheet Contents:  
Sheet No.  
**S-2**  
10



**CITY ENGINEERS OFFICE**  
**CITY OF HIMAMAYLAN**

Prepared by:  
**EDELIZ G. PANQUILAY**  
Architect

Checked by:  
**REIGNER B. BEDAURE**  
Architect I

Checked by:  
**REGIE L. CALVO**  
Asst. City Engineer

Project Title:

**IMPROVEMENT OF  
ADMIN BUILDING**

Location: Brgy. Carad-an, Himamaylan City

Recommending Approval:

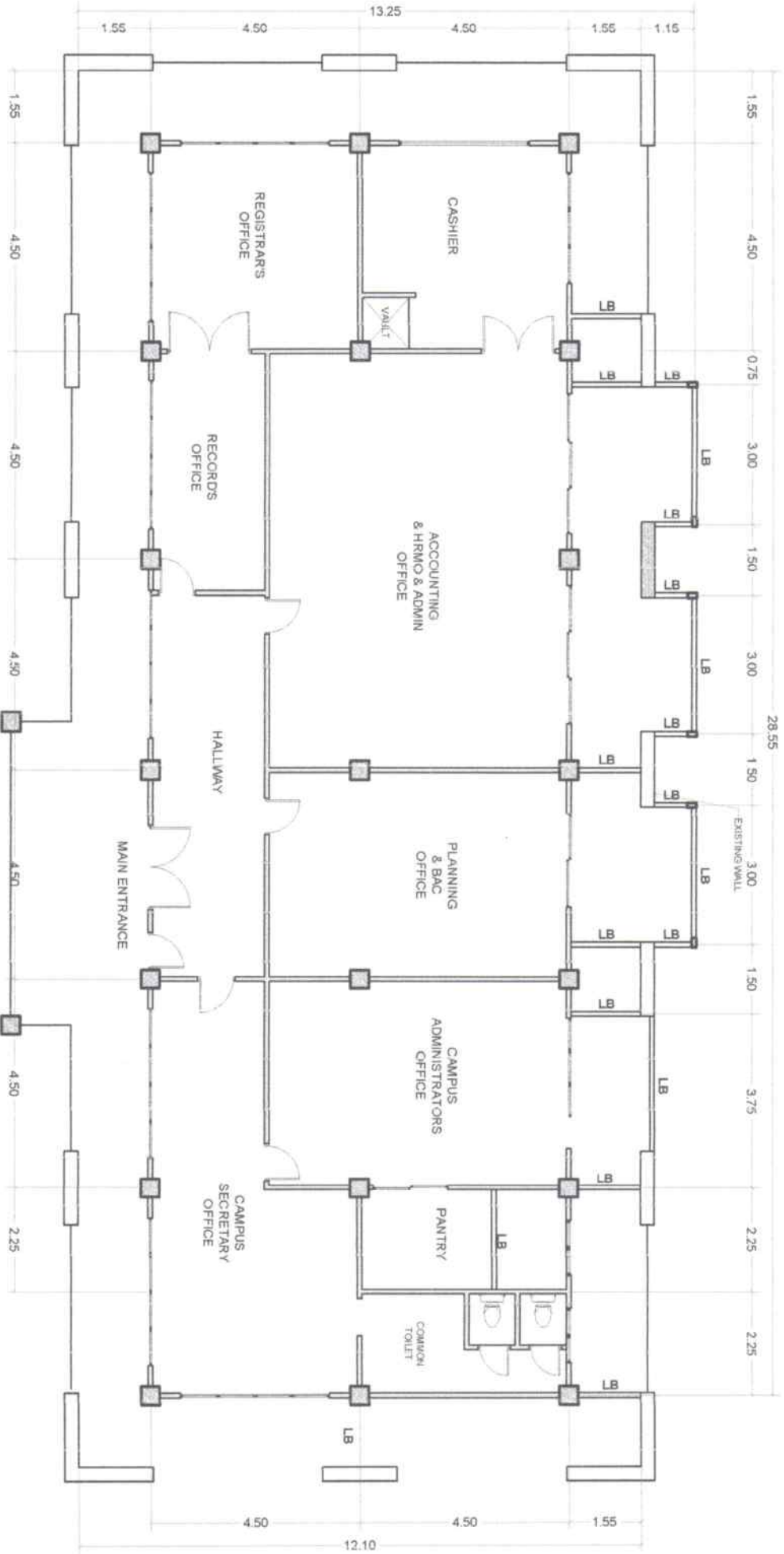
*[Signature]*  
**AKMARI J. DAVA M. Ed.**  
HEAD, PLANNING AND DEVELOPMENT

Approved By:

*[Signature]*  
**GENESIS G. CAMARISTA, Ph.D.**  
CAMPUS ADMINISTRATOR

Sheet Contents:

Sheet No



**LINETEL BEAM PLAN**  
SCALE: 1:120M/TS



**CITY ENGINEERS OFFICE  
CITY OF HIMAMAYLAN**

Prepared by:

**EDELIZ G. AQUILAY**  
Asst. Engineer

Project Title:

**IMPROVEMENT OF  
ADMIN BUILDING**

Recommending Approval:

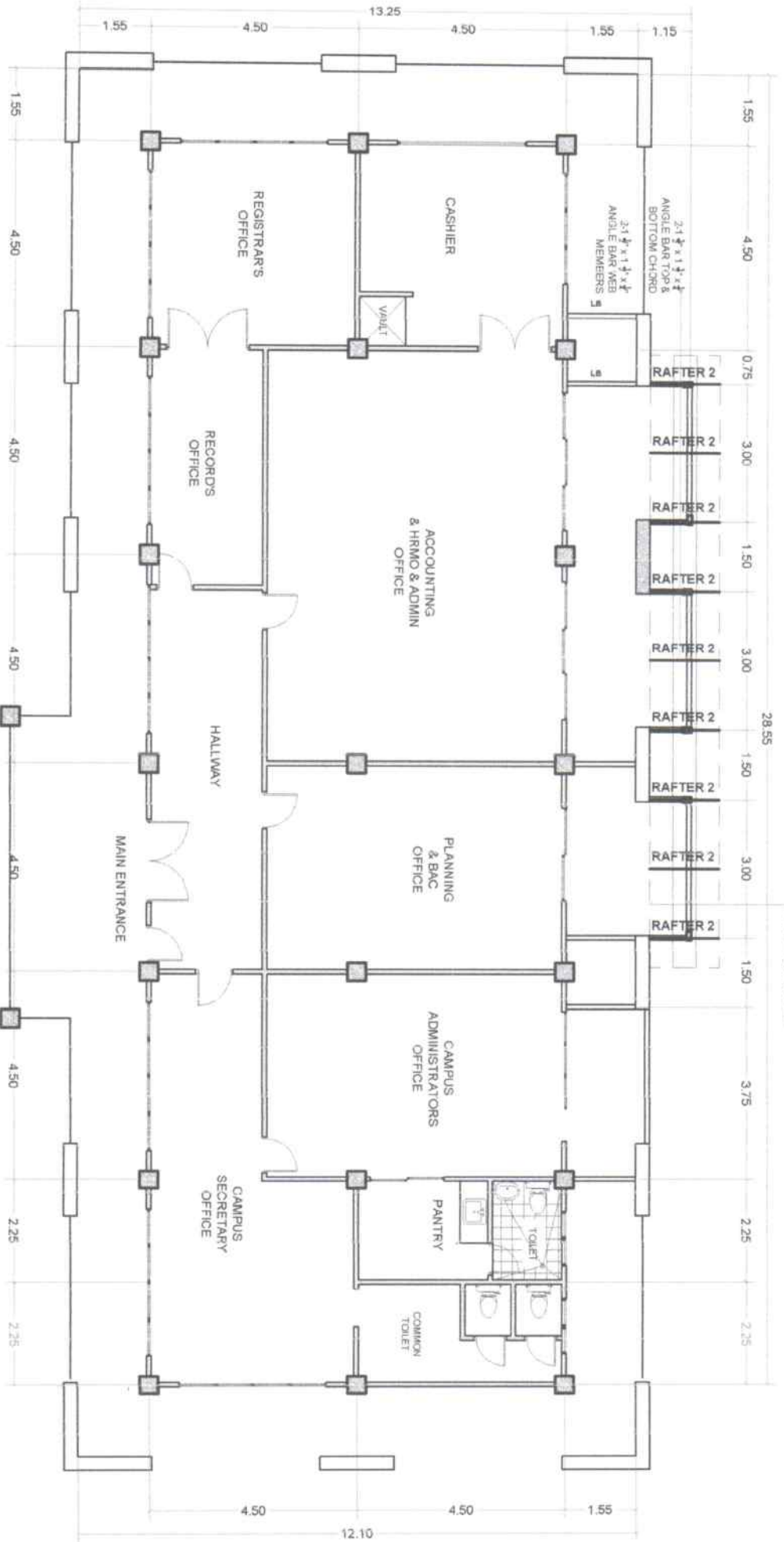
*[Signature]*  
**ALMAR J. JARA MED.**  
HEAD, PLANNING AND DEVELOPMENT

Approved By:

*[Signature]*  
**GENESIS G. CAMARISTA, Ph.D.**  
CAMPUS ADMINISTRATOR

Sheet Contents:

Sheet No.



**ROOF FRAMING PLAN**  
SCALE: 1:120MTS

2" x 3" CEILING JOISTS  
SPACED @ 0.90M O.C.



**CITY ENGINEERS OFFICE  
CITY OF HIMAMAYLAN**

Prepared by:

EDLIZ G. SAMPOLAY  
Asst. Engr. III

Project Title:

**IMPROVEMENT OF  
ADMIN BUILDING**

Recommending Approval:

ALMAR A. JAVIA M. Ed.  
HEAD, PLANNING AND DEVELOPMENT

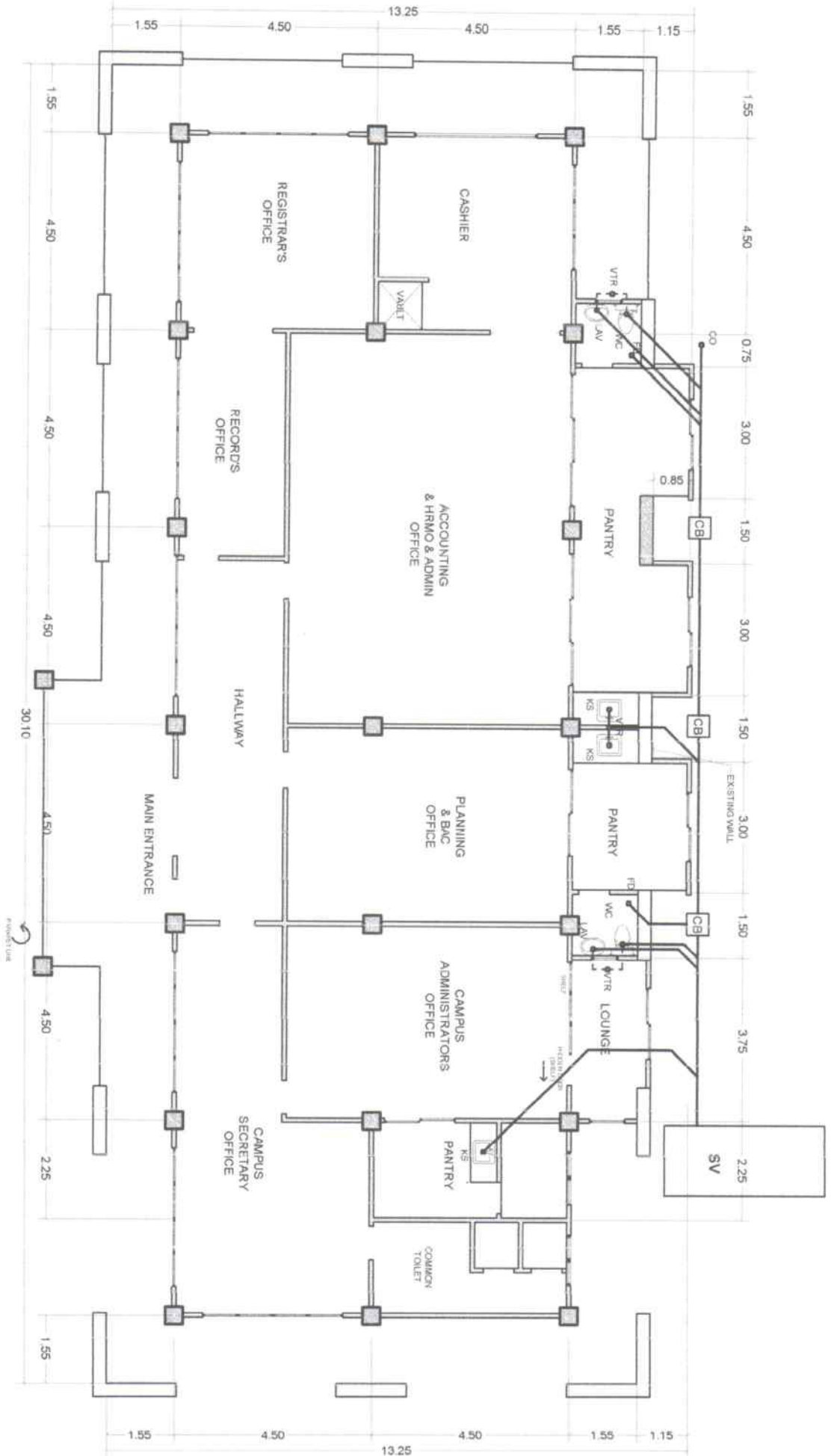
Approved By:

GENESIS G. CAMARISTA, Ph.D.  
CAMPUS ADMINISTRATOR

Sheet Contents:

Sheet No.

**P-1**  
13



**SANITARY LAYOUT**  
SCALE: 1:120MTS



**CITY ENGINEERS OFFICE**  
**CITY OF HIMAMAYLAN**

Prepared by:  
**EDELIZ G. BANGOLAY**  
Asst. Engineer III

Checked:  
**REGIE CALVO**  
Asst. City Engineer

REIGNHE JOB BEDAURE  
Asst. Engineer I

Project Title:  
**IMPROVEMENT OF  
ADMIN BUILDING**

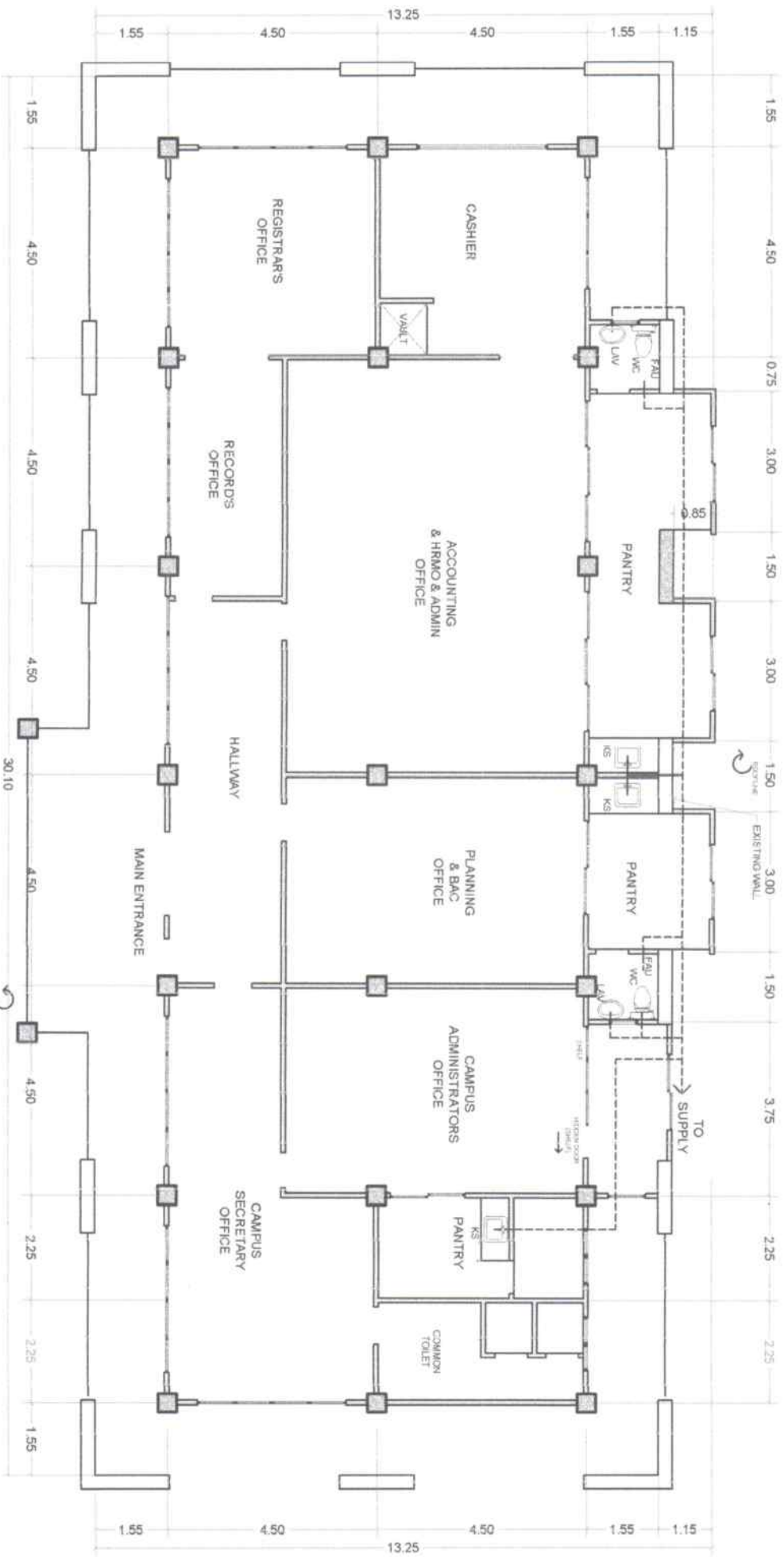
Location: Brgy. Carado-an, Hiramayan City

Recommending Approval:  
*[Signature]*  
**ALVARO J. JAVIA M.D.**  
HEAD, PLANNING AND DEVELOPMENT

Approved By:  
*[Signature]*  
**GENESIS G. CAMARISTA, Ph.D.**  
CAMPUS ADMINISTRATOR

Sheet Contents:

Sheet No.



**WATER SUPPLY LAYOUT**  
SCALE: 1:120MTS



**CITY ENGINEERS OFFICE  
CITY OF HIMAMAYLAN**

Prepared by:

EDLIZ S. BAYANILAY

Checked:

REIGNHEE S. BEDAURE

Checked:  
REG. ENR. CALVO  
Asst. City Engineer

Project Title:

**IMPROVEMENT OF  
ADMIN BUILDING**

Location: Brgy. Caradio-an, Himamaylan City

Recommending Approval:

*Almar J. J. M. M. Ed.*  
ALMAR J. J. M. M. Ed.

HEAD, PLANNING AND DEVELOPMENT

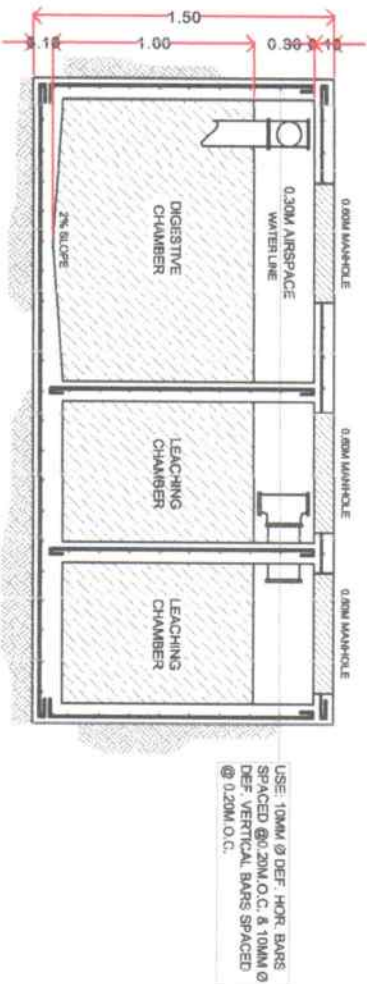
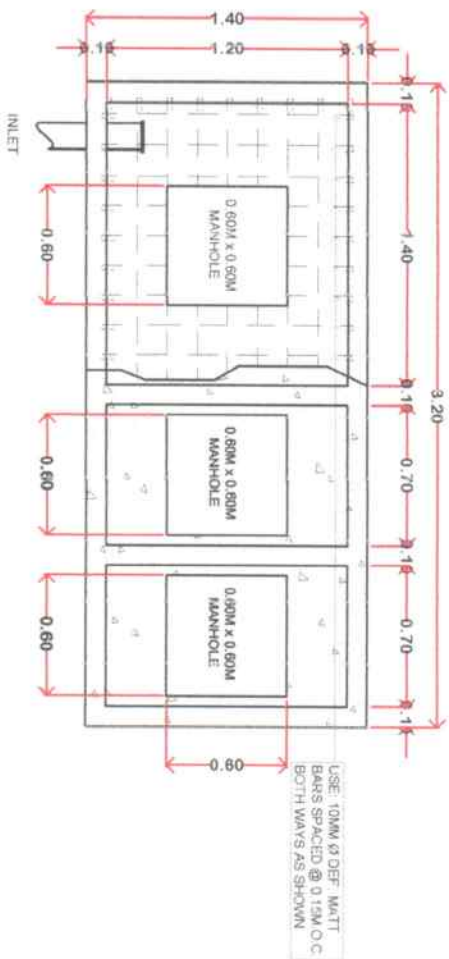
Approved By:

*Genesis G. Camarista, Ph.D.*  
GENESIS G. CAMARISTA, Ph.D.

CAMPUS ADMINISTRATOR

Sheet Contents:

Sheet No.



SEPTIC VAULT DETAIL  
SCALE: 1:35MTS

CATCH BASIN DETAIL  
SCALE: 1:35MTS



**CITY ENGINEERS OFFICE**  
**CITY OF HINAMAYLAN**

Prepared by:

JOEMAR R. YONGSUICO  
ENGINEER II

Project Title:

**IMPROVEMENT OF  
ADMIN BUILDING**

Recommending Approval:

ALMAR J. JAYA M. ED.  
HEAD, PLANNING AND DEVELOPMENT

Approved By:

GENESIS G. CAMARISTA, Ph.D.  
CAMPUS ADMINISTRATOR

Sheet Contents:

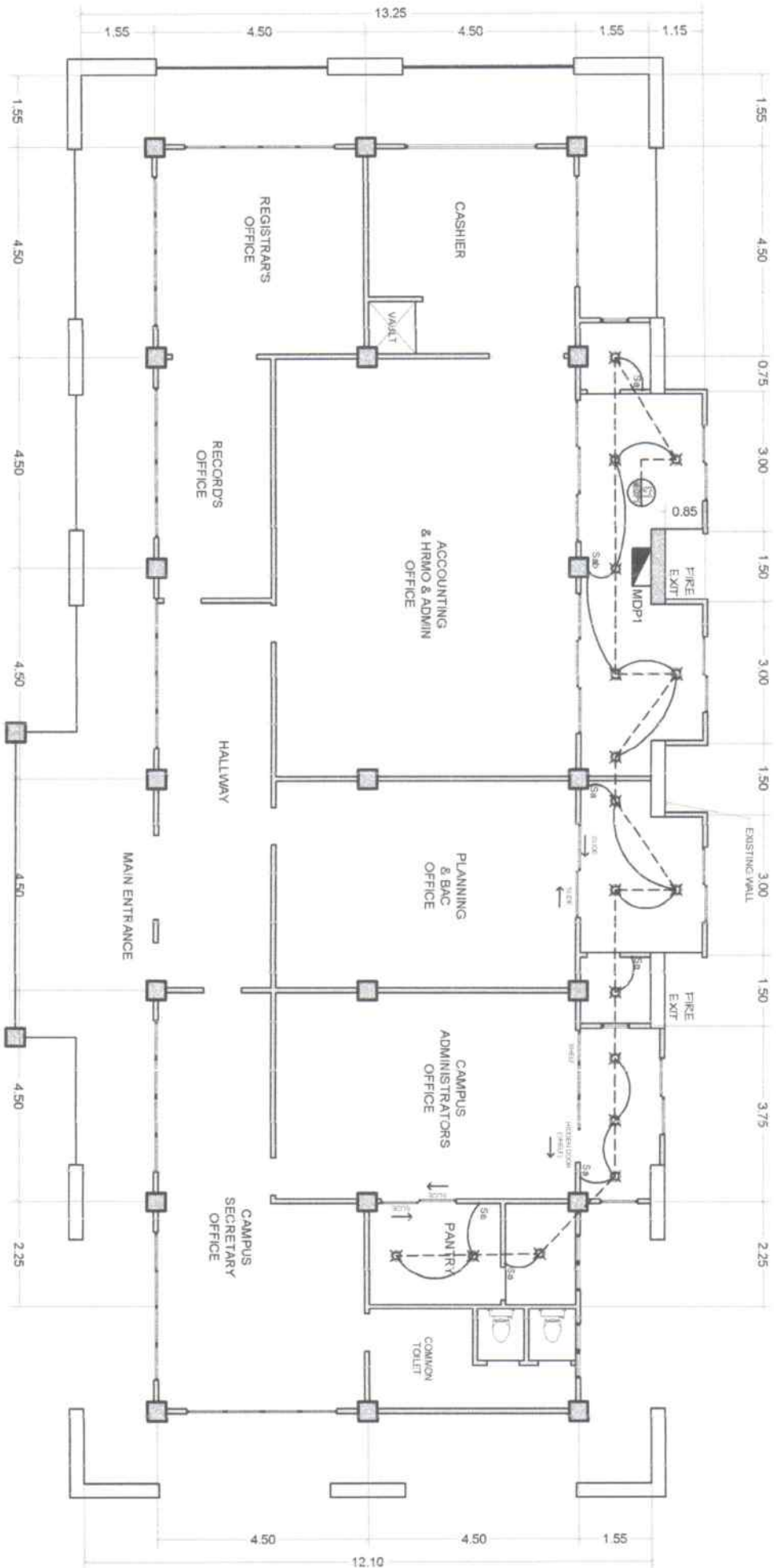
Sheet No.

Checked:  
REGIE CALVO  
Asst. Engineer

Location: Brgy. Caradio-III, Hinamaylan City

HEAD, PLANNING AND DEVELOPMENT

CAMPUS ADMINISTRATOR



**LIGHTING LAYOUT**





**CITY ENGINEERS OFFICE**  
**CITY OF HIMAMAYLAN**

Prepared by:

JOEMAR KINGSUICO  
Engineer II

Project Title:

**IMPROVEMENT OF  
ADMIN BUILDING**

Recommending Approval:

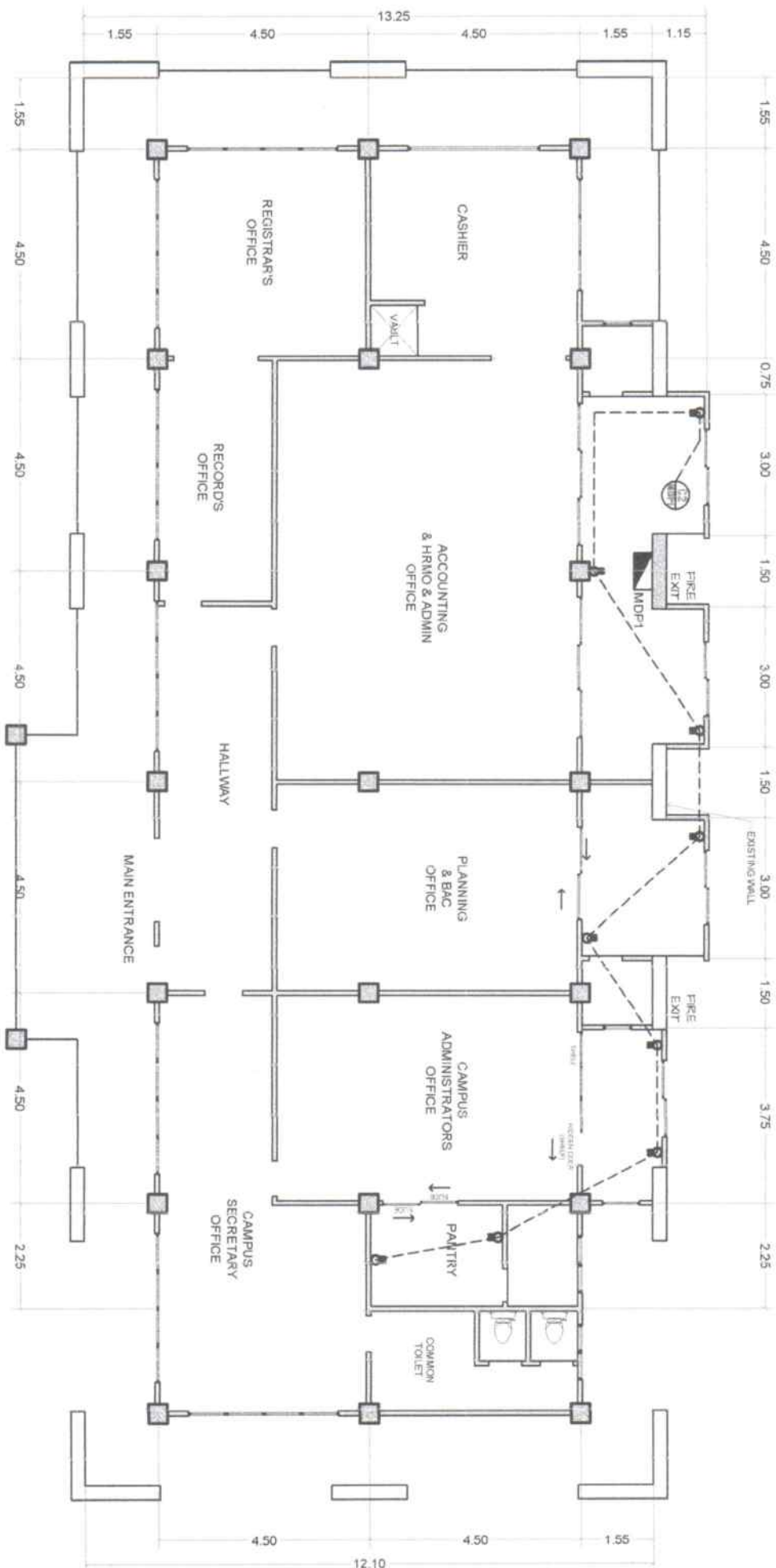
ALMAR J. JAVAME, ED.  
HEAD, PLANNING AND DEVELOPMENT

Approved By:

GENESIS G. CAMARISTA, Ph.D.  
CAMPUS ADMINISTRATOR

Sheet Contents:

Sheet No.



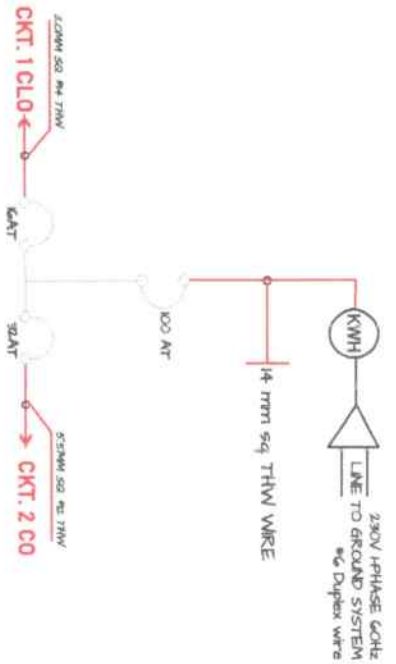
**POWER LAYOUT**

## COMPUTATION OF LOADS

### MDP 1

CMT NO	LOAD DESCRIPTION	POWER WATT/VA	VOLTAGE	CURRENT AMP	PROTECTION	SIZE OF WIRE	CONDUIT
CMT 1 LO	17 - CEILING LIGHT OUTLET	1700 W	230 V	7.39 A	16 AT	2.0mm sq. (#14) THW	3/4" φ PVC-P/PE
CMT 2 LO	9 - CONVENIENCE OUTLET	3240 W	230 V	14.08 A	20 AT	3.5mm sq. (#12) THW	3/4" φ PVC-P/PE
<b>TOTAL CONNECTED LOAD =</b>		<b>4940 W</b>		<b>21.47A</b>			

Total Power = 4940 VA  
 $I_c = (4940/230) 150\% O.L. \times 0.8 = 25.77$  Amp  
 Use # 6 THW stranded cu wire  
 $I_p = (4940/230) 175\% O.L. \times 0.84 = 20.06$  Amp  
 Use: 100 AT, 230V, 60Hz, 1 phase MCB



○ SINGLE LINE DIAGRAM

○ SCHEDULE OF LOADS

<b>LEGEND</b>	
	CIRCUIT BREAKER
	MAIN DISTRIBUTION PANEL
	CIRCUIT LINE
	SWITCH LINE
	LED BULB DOWNLIGHT
	3- GANG CONVENIENCE OUTLET
	2- GANG CONVENIENCE OUTLET
	AIR-CONDITIONING UNIT OUTLET
	ONE-GANG SWITCH
	ONE-GANG SWITCH



**CITY ENGINEERS OFFICE**  
**CITY OF HIMAMAYLAN**

Prepared by:

JOEMARIE O. BOSUO  
 Engineer

Checked:  
 REGINA CALVO  
 Asst. City Engineer

Project Title:

**IMPROVEMENT OF  
 ADMIN BUILDING**

Location: Brgy. Carado-an, Himamaylan City

Recommending Approval:

ALMAR J. JURA MED.  
 HEAD, PLANNING AND DEVELOPMENT

HEAD, PLANNING AND DEVELOPMENT

Approved By:

GENESIS G. CAMARISTA, Ph.D.  
 CAMPUS ADMINISTRATOR

CAMPUS ADMINISTRATOR

Sheet Contents:

Sheet No.