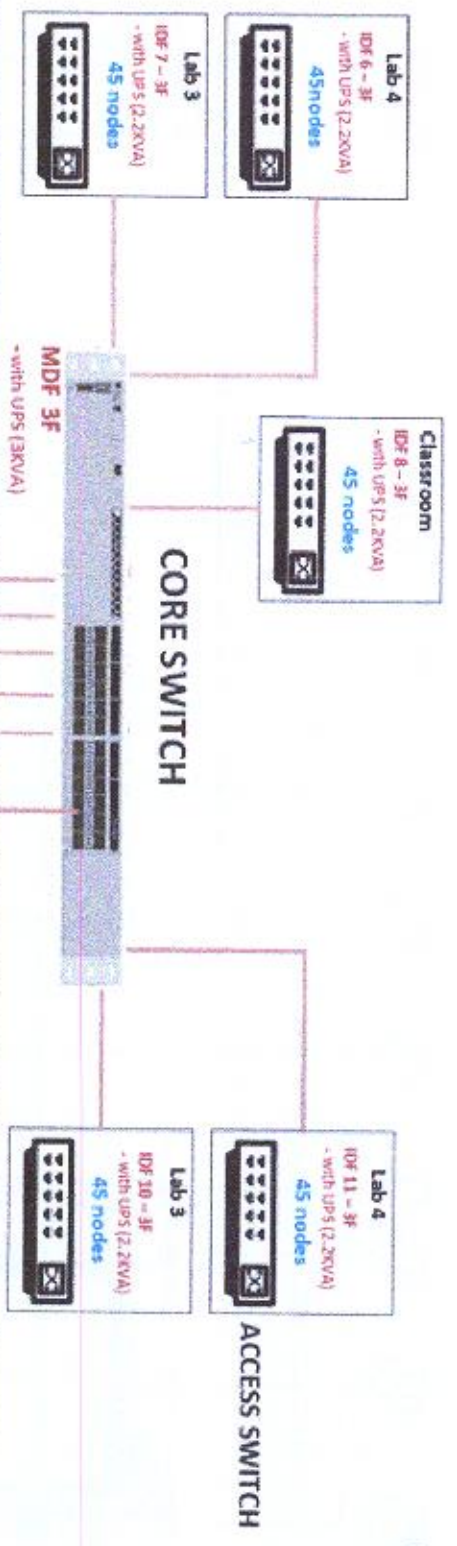


3<sup>rd</sup> Floor



2<sup>nd</sup> Floor



1<sup>st</sup> Floor



8 Cores FOC, DM3, Indoor

*Watermark: MMS*



West Visayas State University  
Luna St. La Paz 1000 City, Philippines 5000  
Office of the President  
MANAGEMENT INFORMATION SYSTEMS OFFICE  
Tel No. (035) 2000711 local 720; URL: www.wvsu.edu.ph; Email: mms@wvsu.edu.ph

PROPOSED NETWORK DIAGRAM FOR CICT

PROJECT TITLE

DRAFTED BY:

*Ely Ann A. Hoque*  
ELY ANN A. HOQUE  
Network Administrator

APPROVED BY:

*Louie E. Cervantes*  
LOUIE E. CERVANTES  
MS Director

*DR. RAUPEL VICTORINE J. DAPAT*  
Computer Laboratory Supervisor  
*DR. MA. BETH S. CONCEPCION*  
Dean, College of ICT  
West Visayas State University

REV:

DATE:

A	1
NOT TO SCALE	1



2nd Floor

**LEGEND:**

-  PVC Piping
-  Cable Tray

DRAFTED BY:

ELYJUN A. TIOTE  
Network Administrator

APPROVED BY:

LOUIE F. CERANITES  
MS Director

DR. RALPH WAINRAE J. D'AYOT  
Computer Laboratory Supervisor

DR. MA. BEITH S. CONCEPCION  
Dean, College of ICT  
West Visayas State University

**PROPOSED NETWORK DIAGRAM FOR CICT**

West Visayas State University  
Lana St. La Paz, Iloilo City, Philippines 5000

Office of the President  
MANAGEMENT INFORMATION SYSTEMS OFFICE  
Tel. No. 033-3203731 local 300. URL: www.wvstu.edu.ph Email: info@wvstu.edu.ph

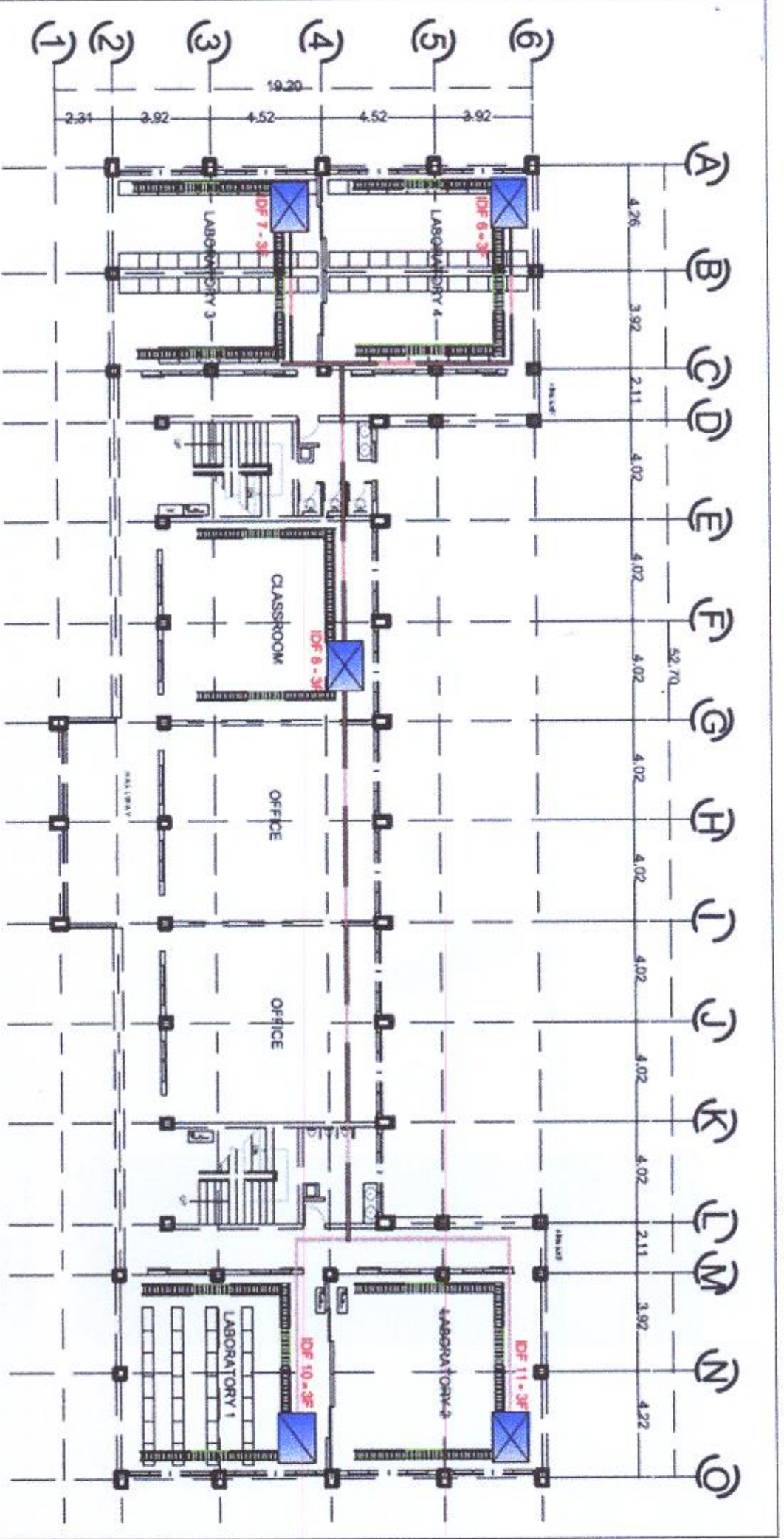
PROJECT TITLE

DATE

A

NOT TO SCALE





3rd Floor

**LEGEND:**

-  PVC Piping
-  Cable Tray

**DR. RAUPH VICTOR J. DAHOT**  
Computer Laboratory Supervisor

**DR. MA. BETH S. CONCEPCION**  
Dean, College of ICT  
West Visayas State University

DRAFTED BY:

**ELLY JUN A. TOPE**  
Network Administrator

APPROVED BY:

**LOUIE F. CENARES**  
MS Office

DATE: JULY 2023  
REV: 01

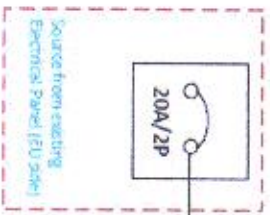
**A** 1 1

NOT TO SCALE

**PROPOSED NETWORK DIAGRAM FOR CICT**

**West Visayas State University**  
Luna St. LA Sag 1009, Cebu, Philippines 6000  
Office of the President  
**MANAGEMENT INFORMATION SYSTEMS OFFICE**  
Tel. No. 035-2010875 local 301, 302, www.wvsu.edu.ph, Email: [info@wvsu.edu.ph](mailto:info@wvsu.edu.ph)





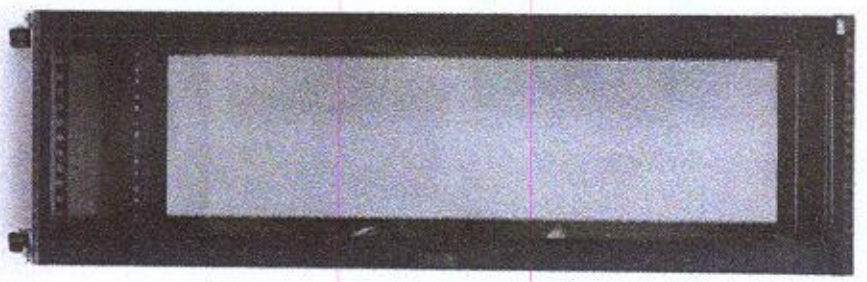
3.5 Square THHN (4) x 3.5mm<sup>2</sup> TWIGS



Output

Power Distribution Unit (1RU)

Active components directly connecting to the PDU



**Data Cabinet (MDF)**  
42U, 800mm x 1000mm, black



West Visayas State University  
Luna St. LA Paz, Iloilo City, Philippines 6000  
Office of the President  
MANAGEMENT INFORMATION SYSTEMS OFFICE  
Tel. No. 033-5200071 local 700, 701, www.wvsu.edu.ph Email: info@wvsu.edu.ph

**PROPOSED NETWORK DIAGRAM CICT**

PROJECT TITLE

DRAFTED BY:

ELY J. ANA TOPE  
Network Administrator

APPROVED BY:

LOUIE F. CERVANTES  
MSO Director

**DR. R. RUTH VICTORILE J. DAPOT**  
Computer Laboratory Supervisor

**DR. MA. BETH S. CONCEPCION**  
Dean, College of ICT  
West Visayas State University

DATE: JULY 2023

REV: 01

A	1	1
NOT TO SCALE		