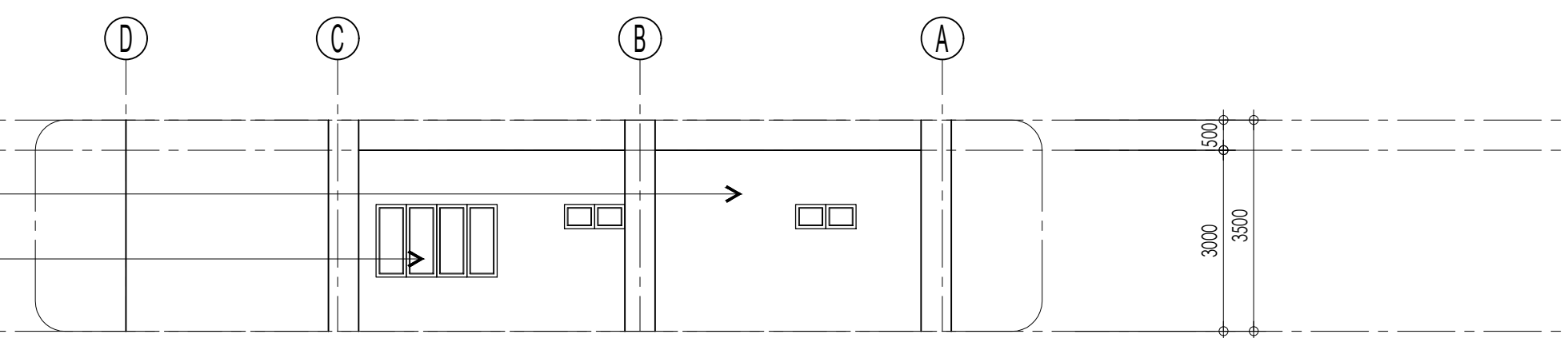


**1 SECOND FLOOR LEFT SIDE ELEVATION**  
SCALE: 1:100 M



**2 SECOND FLOOR RIGHT SIDE ELEVATION**  
SCALE: 1:100 M

**DOORS & WINDOWS SCHEDULE**

SCALE 1:60

TYPE: 6MM THK CLEAR GLASS SLIDING DOOR ON 50MM THK POWDER COATED ALUMINUM FRAME, SLIDING TYPE W/ FIXED TRANSOM	TYPE: 6MM THK CLEAR GLASS SLIDING DOOR ON 50MM THK POWDER COATED ALUMINUM FRAME, SLIDING TYPE W/ FIXED TRANSOM	TYPE: 6MM THK CLEAR GLASS DOUBLE-LEAF DOOR ON 50MM THK POWDER COATED ALUMINUM FRAME, SWING-FIXED TYPE W/ FIXED TRANSOM	TYPE: 6MM THK CLEAR GLASS DOUBLE-LEAF DOOR ON 50MM THK POWDER COATED ALUMINUM FRAME, SWING-FIXED TYPE W/ FIXED TRANSOM	TYPE: 6MM THK CLEAR GLASS DOUBLE-LEAF DOOR ON 50MM THK POWDER COATED ALUMINUM FRAME, SWING-FIXED TYPE W/ FIXED TRANSOM	TYPE: 6MM THK CLEAR GLASS SINGLE-LEAF DOOR ON 50MM THK POWDER COATED ALUMINUM FRAME, SWING TYPE W/ FIXED TRANSOM	TYPE: SOLID CORE SINGLE-LEAF PANEL DOOR W/ WOODEN LOUVER	TYPE: SOLID CORE SINGLE-LEAF PANEL DOOR W/ WOODEN LOUVER	TYPE: 6MM THK TEMPERED CLEAR GLASS WINDOW ON 50MM THK POWDER COATED ALUMINUM FRAME, FIXED-ANNING TYPE	
LOCATION: SECOND FLOOR - COFFEE SHOP	LOCATION: SECOND FLOOR - COFFEE SHOP	LOCATION: SECOND FLOOR - LOUNGE/RECEPTION AREA	LOCATION: SECOND FLOOR - CFL, REVIEW CENTER	LOCATION: SECOND FLOOR - COFFEE SHOP, STUDY HUB, DORMITORY HALLWAY	LOCATION: SECOND FLOOR - CFL OFFICE, REVIEW OFFICE	LOCATION: SECOND FLOOR - DORM UNITS, DINING	LOCATION: SECOND FLOOR - GRL'S BATHROOM, COMFORT ROOM, LAUNDRY AREA, HE, SHE, STORAGE ROOM	LOCATION: SECOND FLOOR - STUDY HUB, UNITS 1&2, DINING AREA	
REQUIRED SET: 1 SET	REQUIRED SET: 1 SET	REQUIRED SET: 1 SET	REQUIRED SET: 2 SETS	REQUIRED SET: 4 SETS	REQUIRED SET: 2 SETS	REQUIRED SET: 9 SETS	REQUIRED SET: 6 SETS	REQUIRED SET: 2 SETS	
TYPE: 6MM THK TEMPERED CLEAR GLASS WINDOW ON 50MM THK POWDER COATED ALUMINUM FRAME, FIXED-ANNING TYPE	TYPE: 6MM THK TEMPERED CLEAR GLASS WINDOW ON 50MM THK POWDER COATED ALUMINUM FRAME, FIXED-ANNING TYPE	TYPE: 6MM THK CLEAR GLASS WINDOW ON 50MM THK POWDER COATED ALUMINUM FRAME, ANNING TYPE	TYPE: 6MM THK CLEAR GLASS WINDOW ON 50MM THK POWDER COATED ALUMINUM FRAME, ANNING TYPE	TYPE: 6MM THK CLEAR GLASS WINDOW ON 50MM THK POWDER COATED ALUMINUM FRAME, ANNING TYPE					
LOCATION: SECOND FLOOR - COFFEE SHOP	LOCATION: SECOND FLOOR - STUDY HUB, UNITS 3&4	LOCATION: SECOND FLOOR - FACADE	LOCATION: SECOND FLOOR - STUDY HUB	LOCATION: SECOND FLOOR - STUDY HUB					
REQUIRED SET: 1 SET	REQUIRED SET: 2 SETS	REQUIRED SET: 2 SETS	REQUIRED SET: 1 SET	REQUIRED SET: 2 SETS					
TYPE: 6MM THK CLEAR GLASS WINDOW ON 50MM THK POWDER COATED ALUMINUM FRAME, ANNING TYPE	TYPE: 6MM THK CLEAR GLASS WINDOW ON 50MM THK POWDER COATED ALUMINUM FRAME, ANNING TYPE	TYPE: 6MM THK CLEAR GLASS WINDOW ON 50MM THK POWDER COATED ALUMINUM FRAME, ANNING TYPE	TYPE: 6MM THK CLEAR GLASS WINDOW ON 50MM THK POWDER COATED ALUMINUM FRAME, ANNING TYPE	TYPE: 6MM THK CLEAR GLASS WINDOW ON 50MM THK POWDER COATED ALUMINUM FRAME, ANNING TYPE	TYPE: 6MM THK CLEAR GLASS WINDOW ON 50MM THK POWDER COATED ALUMINUM FRAME, ANNING TYPE	TYPE: 6MM THK CLEAR GLASS WINDOW ON 50MM THK POWDER COATED ALUMINUM FRAME, ANNING TYPE	TYPE: 6MM THK CLEAR GLASS WINDOW ON 50MM THK POWDER COATED ALUMINUM FRAME, ANNING TYPE	TYPE: 6MM THK CLEAR GLASS WINDOW ON 50MM THK POWDER COATED ALUMINUM FRAME, ANNING TYPE	TYPE: 6MM THK CLEAR GLASS WINDOW ON 50MM THK POWDER COATED ALUMINUM FRAME, ANNING TYPE
LOCATION: SECOND FLOOR - COFFEE SHOP	LOCATION: SECOND FLOOR - COFFEE SHOP	LOCATION: SECOND FLOOR - CFL	LOCATION: SECOND FLOOR - COFFEE SHOP SERVICE AREA	LOCATION: SECOND FLOOR - REVIEW OFFICE	LOCATION: SECOND FLOOR - LAUNDRY AREA, STORAGE	LOCATION: SECOND FLOOR - CFL, REVIEW CENTER & OFFICE, DORM UNITS 5,6,7&8	LOCATION: SECOND FLOOR - HE, SHE, GRLS BATHROOM & CR	LOCATION: SECOND FLOOR - STAIRS	
REQUIRED SET: 1 SET	REQUIRED SET: 2 SETS	REQUIRED SET: 1 SET	REQUIRED SET: 1 SET	REQUIRED SET: 1 SET	REQUIRED SET: 2 SETS	REQUIRED SET: 9 SETS	REQUIRED SET: 4 SETS	REQUIRED SET: 2 SETS	

<p><b>West Visayas State University</b> (Formerly Iloilo Normal School) Luna St., La Paz, Iloilo City 5000 Iloilo, Philippines *Trunkline: (063) (033) 320-0870 to 79 *Telefax No.: (033) 320-0879 *Website: www.wvsu.edu.ph *Email Address: president@wvsu.edu.ph</p> <p>CAMPUS PHYSICAL PLANNING OFFICE</p>	<p>R. A. 545 ART. 2 SEC. 25 (4)</p> <p>ALL DESIGNS, DRAWINGS, SPECIFICATIONS AND COPIES THEREOF, PREPARED AND FURNISHED BY THE ARCHITECT IN CONNECTION WITH THIS PROJECT, ARE INSTRUMENTS OF PROFESSIONAL SERVICE, AS INSTRUMENTS OF PROFESSIONAL SERVICE THEY ARE THE PROPERTY OF THE ARCHITECT WHETHER THE WORK FOR WHICH THEY ARE MADE MAY BE EXECUTED OR NOT, AND NOT TO BE REPRODUCED OR USED ON OTHER WORK EXCEPT BY WRITTEN AGREEMENT WITH THE ARCHITECT.</p>	<p><b>CERTIFIED BY:</b></p>	<p><b>CHECKED BY:</b></p>	<p><b>PROJECT TITLE:</b></p>	<p><b>RECOMMENDING APPROVAL:</b></p>	<p><b>APPROVED BY:</b></p>	<p><b>SHEET CONTENTS:</b></p>	<p><b>SHEET NUMBER</b></p>
		<p>AR. GERARD L. IBAÑEZ, UAP</p>	<p>OIC HEAD, CPPO</p>	<p>PROPOSED SECOND FLOOR OF WVSU 3-STOREY COMMERCIAL BUILDING</p>	<p>WILHELM P. CERRO, Ed.D.</p>	<p>JOSELITO F. VILLARUZ, M.D., PhD., FPPS</p>	<p>AS SHOWN</p>	<p>2 2</p>
		<p>PRC No. TIN: PTR No. D.I.:</p>	<p>LOCATION: WEST VISAYAS STATE UNIVERSITY - MAIN CAMPUS, LA PAZ, ILOILO CITY</p>		<p>DIRECTOR, UPDO</p>	<p>PRESIDENT, WVSU</p>	<p>DESIGNED BY: CHECKED BY: ACAD BY: NMM DATE:</p>	