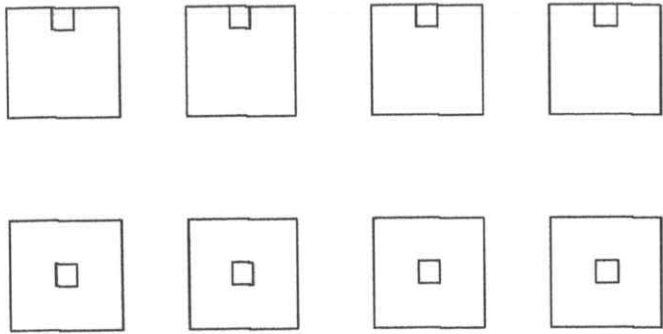
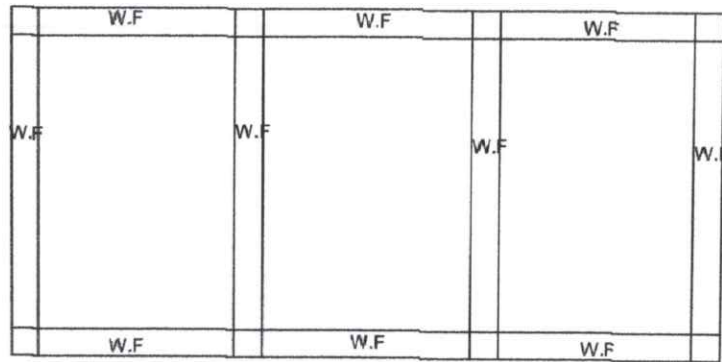
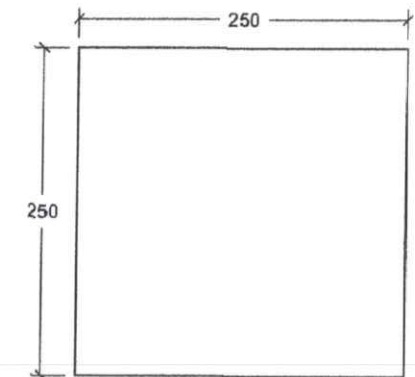
 <p>WEST VISAYAS STATE UNIVERSITY JANUAY CAMPUS JANUAY, ILOILO, PHILIPPINES PROJECT PLANNING AND DEVT. OFFICE</p>	<p>PREPARED BY: <i>Justel</i> ENGR. JUSTEL PAUL M. MIADO</p>	<p>PROJECT TITLE: CONSTRUCTION OF 3-CUBICLE TOILET BETWEEN ICT AND TIRADOR BUILDING</p>	<p>NOTED: <i>JLC</i> FLORENCIO L. CORDURA, JR. MAT. MATH</p>	<p>APPROVED BY: <i>JPM</i> GUILLERMO P. PENDON, Ed. D., LPT</p>	<p>DATE: 26/08/2022</p>	<p>SHEET CONTENT: AS SHOWN</p>	<p>PAGES: 1 / 5</p>
	<p>CAMPUS ENGINEER WVSU - JANUAY CAMPUS</p>	<p>JANUAY, ILOILO</p>	<p>COORDINATOR PDD WVSU - JANUAY CAMPUS</p>	<p>CAMPUS ADMINISTRATOR WVSU - JANUAY CAMPUS</p>	<p>CADBY: JPM</p>	<p>CAMPUS ADMINISTRATOR WVSU - JANUAY CAMPUS</p>	



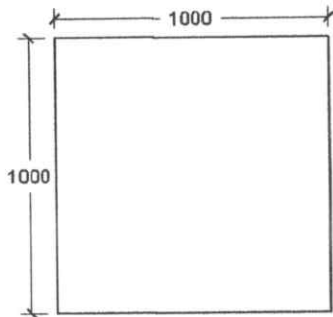
FOOTING PLACEMENT
Scale 1:50



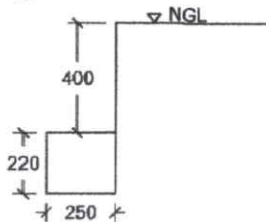
WALL/STRIP FOOTING PLACEMENT
Scale 1:40



COLUMN FOOTING TOP VIEW
Scale 1:10



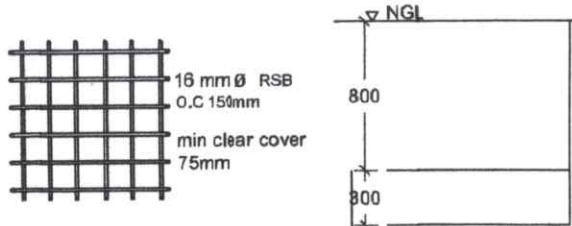
FOOTING TOP VIEW
Scale 1:20



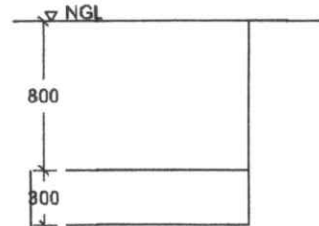
WALL/STRIP FOOTING FRONT VIEW
Scale 1:20



RSB DETAIL WALL/STRIP FOOTING
Scale 1:30



RSB FOOTING
Scale 1:30



FOOTING FRONT VIEW
Scale 1:30

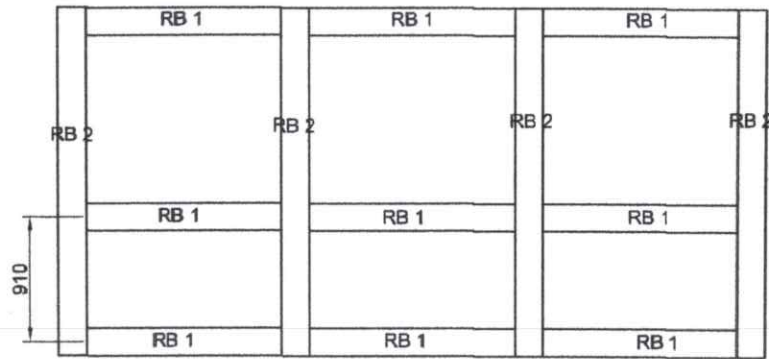


6 12 mm main ØRSB
Ties 3 10 mm ØRSB
@ 50 mm, 6 10 mm
ØRSB @ 100 mm the
rest at 200 mm O.C

COLUMN RSB DETAIL
Scale 1:10

NOTE:
Footing depth as per site will prevail if agreed upon by the Engineer/ Architect in charge

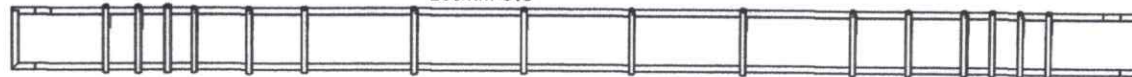
<p>WEST VISAYAS STATE UNIVERSITY JANUAY CAMPUS JANUAY, ILOILO, PHILIPPINES PROJECT PLANNING AND DEVT. OFFICE</p>	<p>PREPARED BY: <i>[Signature]</i> ENGR. JUSTEL PAUL M. MIADO</p>	<p>PROJECT TITLE: CONSTRUCTION OF 3-CUBICLE TOILET BETWEEN ICT AND TIRADOR BUILDING</p>	<p>NOTED: <i>[Signature]</i> FLORENCIO L. CORDURA, JR. MAT. MATH</p>	<p>APPROVED BY: <i>[Signature]</i> BUILE P. PENDON, Ed. D., LPT</p>	<p>DATE: 28/08/2022</p>	<p>SHEET CONTENT: AS SHOWN</p>	<p>PAGES: 2</p>
	<p>CAMPUS ENGINEER WVSU - JANUAY CAMPUS</p>	<p>JANUAY, ILOILO</p>	<p>COORDINATOR, PEO WVSU - JANUAY CAMPUS</p>	<p>CAMPUS ADMINISTRATOR WVSU - JANUAY CAMPUS</p>	<p>CADBY: JPM</p>	<p>CAMPUS ADMINISTRATION WVSU - JANUAY CAMPUS</p>	<p>5</p>



ROOF BEAM PLACEMENT
Scale 1:40

4 12 mm top bars ØRSB
2 12 mm bottom bars ØRSB

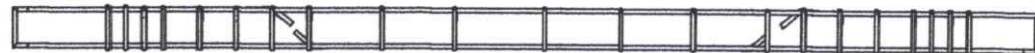
STIRRUP: 4 10mm ØRSB @ 50mm, 2
10mm ØRSB @100mm the rest at
200mm O.C



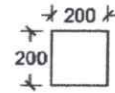
ROOF BEAM 1 RSB DETAIL
Scale 1:10

	Support	Mid Span
Top bars	4 12 mm ØRSB	2 12 mm ØRSB
Bottom bars	2 12 mm ØRSB	4 12 mm ØRSB

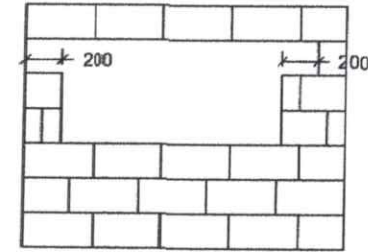
STIRRUP: 4 10mm ØRSB @ 50mm, 4
10mm ØRSB @100mm the rest at
200mm O.C



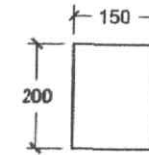
ROOF BEAM 2 RSB DETAIL
Scale 1:15



ROOF BEAM FRONT VIEW
Scale 1:40

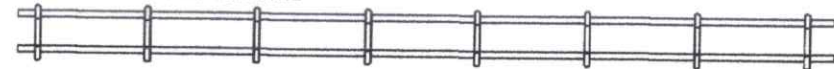


PREPARATION FOR LINTEL BEAMS
Scale 1:30

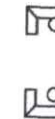


LINTEL BEAM FRONT VIEW
Scale 1:10

1 12 mm top bars ØRSB
1 12 mm bottom bars ØRSB STIRRUP: 10mm ØRSB 200mm O.C

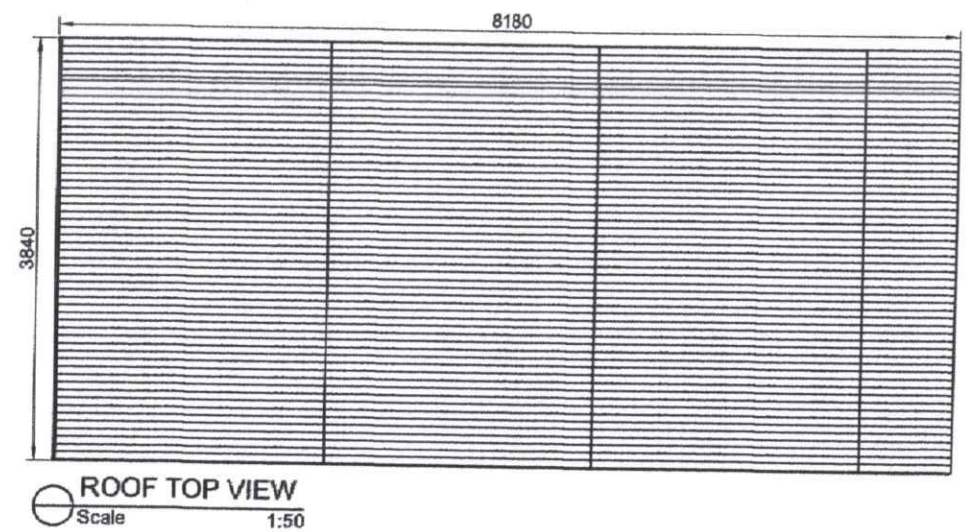
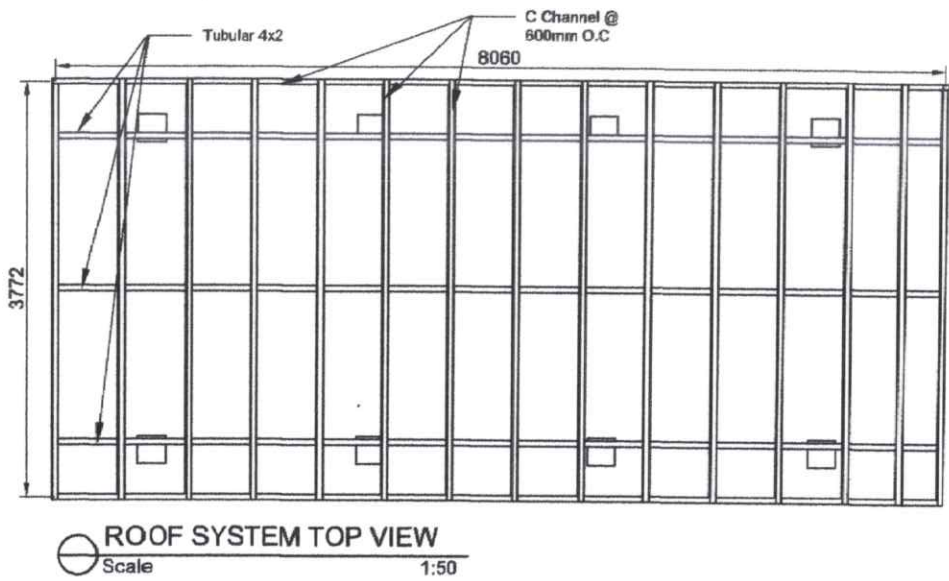
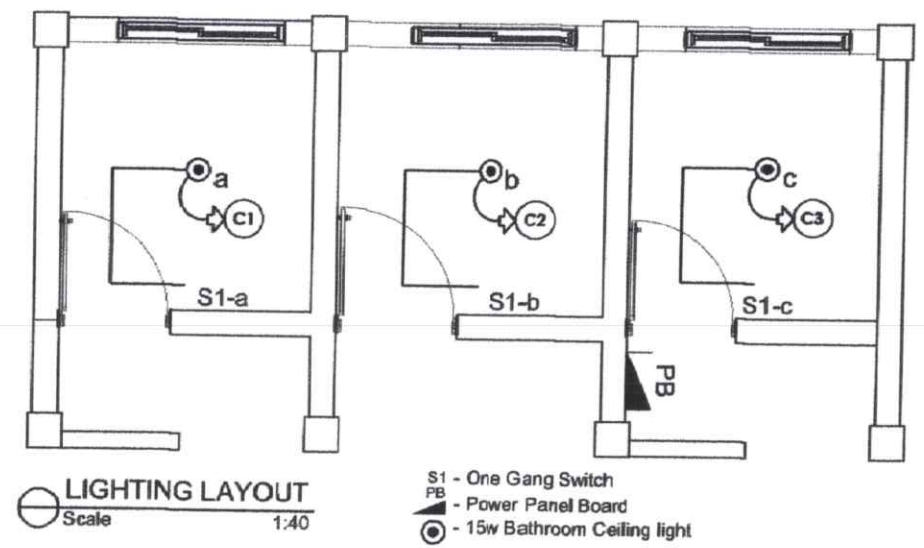
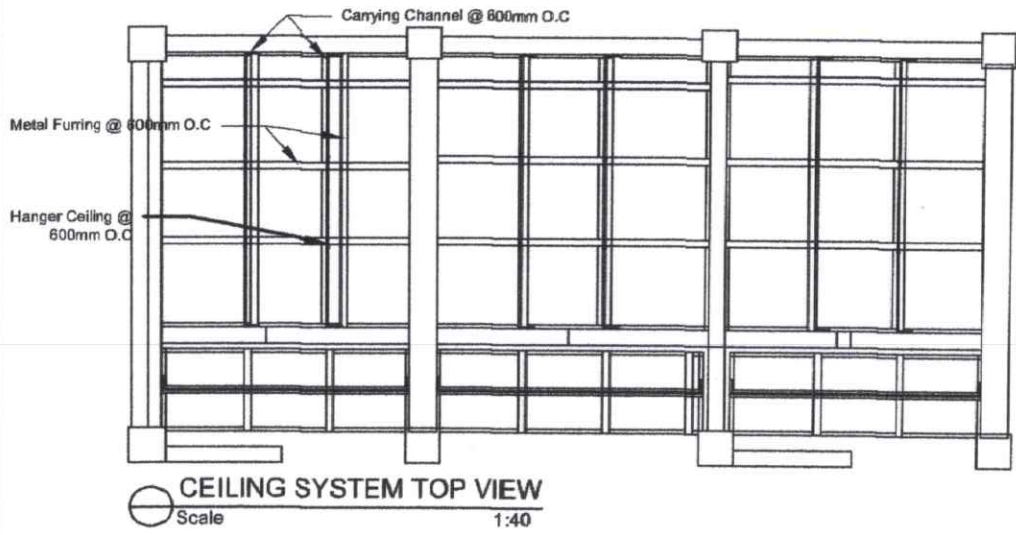


LINTEL BEAM RSB DETAIL
Scale 1:10

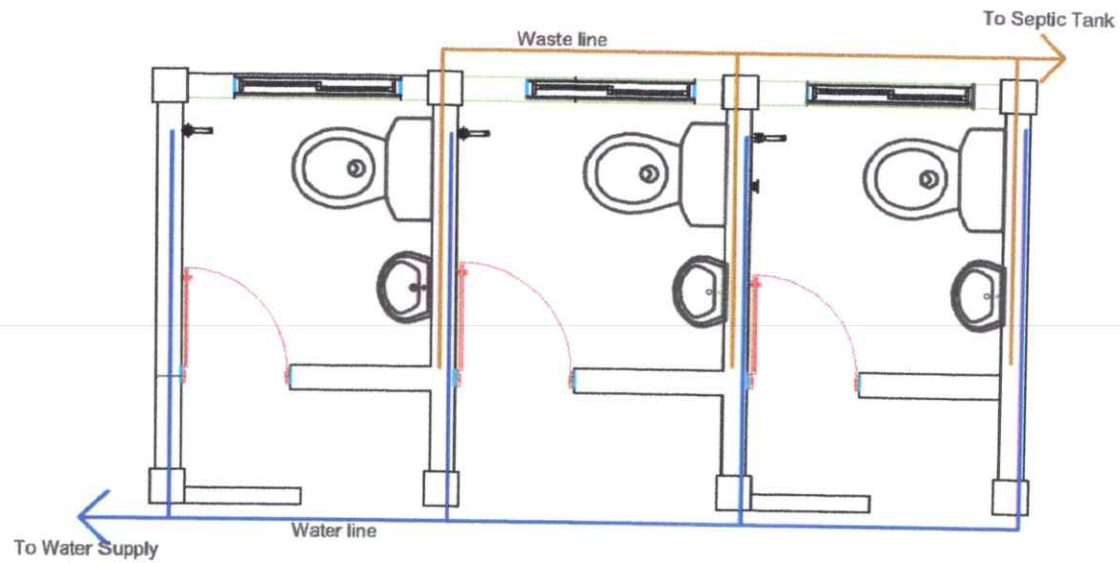


LINTEL BEAM RSB FRONT VIEW
Scale 1:5

	WEST VISAYAS STATE UNIVERSITY JANUJAY CAMPUS JANUJAY, ILOILO, PHILIPPINES PROJECT PLANNING AND DEVT. OFFICE	PREPARED BY: ENGR. JUSTEL PAUL M. MIADO CAMPUS ENGINEER WVSU - JANUJAY CAMPUS	PROJECT TITLE: CONSTRUCTION OF 3-CUBICLE TOILET BETWEEN ICT AND TIRADOR BUILDING JANUJAY, ILOILO	NOTED: FLORENCIO L. CORDURA, JR. MAT. MATH COORDINATOR, PPD WVSU - JANUJAY CAMPUS	APPROVED BY: GUILLER P. PENDON, Ed. D., LPT CAMPUS ADMINISTRATOR WVSU - JANUJAY CAMPUS	DATE: 28/08/2022 CMB BY: JPM	SHEET CONTENT: AS SHOWN CAMPUS ADMINISTRATION WVSU - JANUJAY CAMPUS	PAGES: 3 5
--	----------------------------------------------------------------------------------------------------------------------	--------------------------------------------------------------------------------------------	-----------------------------------------------------------------------------------------------------------	------------------------------------------------------------------------------------------------	-----------------------------------------------------------------------------------------------------	---------------------------------------	------------------------------------------------------------------------------	------------------



	WEST VISAYAS STATE UNIVERSITY JANUAY CAMPUS JANUAY, ILOILO, PHILIPPINES PROJECT PLANNING AND DEVT. OFFICE	PREPARED BY: ENGR. JUSTEL PAUL M. MIADO <small>CAMPUS ENGINEER WYSU - JANUAY CAMPUS</small>	PROJECT TITLE: CONSTRUCTION OF 3-CUBICLE TOILET BETWEEN ICT AND TIRADOR BUILDING <small>JANUAY, ILOILO</small>	NOTED: FLORENCIO L. CORDURA, JR. MAT. MATH <small>COORDINATOR IN-CHARGE WYSU - JANUAY CAMPUS</small>	APPROVED BY: GUILLER P. PENDON, Ed. D., LPT <small>CAMPUS ADMINISTRATOR WYSU - JANUAY CAMPUS</small>	DATE: 28/08/2022 CAD BY: <small>JPM</small>	SHEET CONTENT: AS SHOWN <small>CAMPUS ADMINISTRATION WYSU - JANUAY CAMPUS</small>	PAGES: 4 5

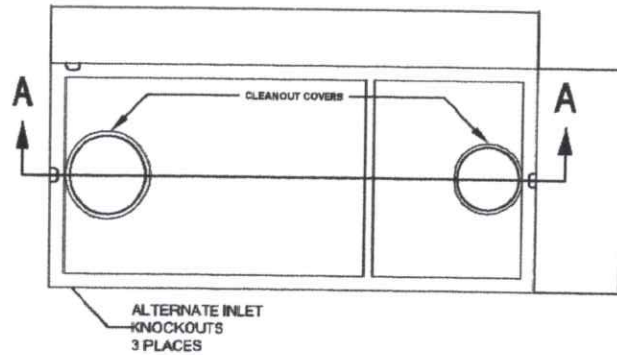


PLUMBING LAYOUT
Scale 1:40

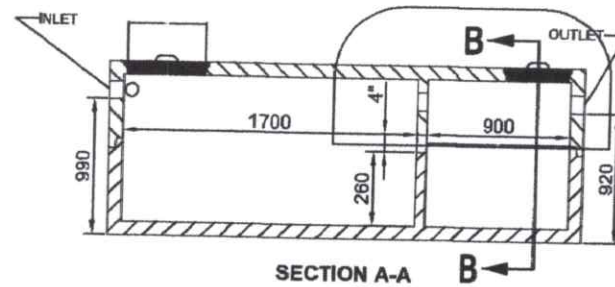
NOTE:


Septic tank design as per site will prevail if agreed upon by the Engineer/ Architect in charge

Plumbing layout as per site will prevail if agreed upon by the Engineer/ Architect in charge



SEPTIC TANK DETAILS



 <p>WEST VISAYAS STATE UNIVERSITY JANUJAY CAMPUS JANUJAY, ILOILO, PHILIPPINES PROJECT PLANNING AND DEVT. OFFICE</p>	<p>PREPARED BY: <i>[Signature]</i> ENGR. JUSTEL PAUL M. MIADO</p>	<p>PROJECT TITLE: CONSTRUCTION OF 3-CUBICLE TOILET BETWEEN ICT AND TIRADOR BUILDING</p>	<p>NOTED: <i>[Signature]</i> FLORENDO L. CORDURA, JR. MAT. MATH</p>	<p>APPROVED BY: <i>[Signature]</i> GUILLEMO P. PENDON, Ed. D., LPT</p>	<p>DATE: 28/08/2022</p>	<p>SHEET CONTENT: AS SHOWN</p>	<p>PAGES: 5</p>
	<p>CAMPUS ENGINEER WVSU - JANUJAY CAMPUS</p>	<p>JANUJAY, ILOILO</p>	<p>COORDINATOR, PDD WVSU - JANUJAY CAMPUS</p>	<p>CAMPUS ADMINISTRATOR WVSU - JANUJAY CAMPUS</p>	<p>CADBY: JPM</p>	<p>CAMPUS ADMINISTRATION WVSU - JANUJAY CAMPUS</p>	<p>5</p>