

PHILIPPINE BIDDING DOCUMENTS

(As Harmonized with Development Partners)

Procurement of INFRASTRUCTURE PROJECTS

Government of the Republic of the Philippines

Project Reference No.

I.B. No. 2022-08

Project Title:

**CONSTRUCTION OF 3-CUBICLE TOILET BETWEEN
ICT AND TIRADOR BUILDING**

PhP831,478.08

Sixth Edition

July 2020

Preface

These Philippine Bidding Documents (PBDs) for the procurement of Infrastructure Projects (hereinafter referred to also as the “Works”) through Competitive Bidding have been prepared by the Government of the Philippines for use by all branches, agencies, departments, bureaus, offices, or instrumentalities of the government, including government-owned and/or -controlled corporations, government financial institutions, state universities and colleges, local government units, and autonomous regional government. The procedures and practices presented in this document have been developed through broad experience, and are for mandatory use in projects that are financed in whole or in part by the Government of the Philippines or any foreign government/foreign or international financing institution in accordance with the provisions of the 2016 revised Implementing Rules and Regulations (IRR) of Republic Act (RA) No. 9184.

The PBDs are intended as a model for admeasurements (unit prices or unit rates in a bill of quantities) types of contract, which are the most common in Works contracting.

The Bidding Documents shall clearly and adequately define, among others: (i) the objectives, scope, and expected outputs and/or results of the proposed contract; (ii) the eligibility requirements of Bidders; (iii) the expected contract duration; and (iv) the obligations, duties, and/or functions of the winning Bidder.

Care should be taken to check the relevance of the provisions of the PBDs against the requirements of the specific Works to be procured. If duplication of a subject is inevitable in other sections of the document prepared by the Procuring Entity, care must be exercised to avoid contradictions between clauses dealing with the same matter.

Moreover, each section is prepared with notes intended only as information for the Procuring Entity or the person drafting the Bidding Documents. They shall not be included in the final documents. The following general directions should be observed when using the documents:

- a. All the documents listed in the Table of Contents are normally required for the procurement of Infrastructure Projects. However, they should be adapted as necessary to the circumstances of the particular Project.
- b. Specific details, such as the “*name of the Procuring Entity*” and “*address for bid submission*,” should be furnished in the Instructions to Bidders, Bid Data Sheet, and Special Conditions of Contract. The final documents should contain neither blank spaces nor options.
- c. This Preface and the footnotes or notes in italics included in the Invitation to Bid, BDS, General Conditions of Contract, Special Conditions of Contract, Specifications, Drawings, and Bill of Quantities are not part of the text of the final document, although they contain instructions that the Procuring Entity should strictly follow.
- d. The cover should be modified as required to identify the Bidding Documents as to the names of the Project, Contract, and Procuring Entity, in addition to date of issue.
- e. Modifications for specific Procurement Project details should be provided in the Special Conditions of Contract as amendments to the Conditions of Contract. For easy completion, whenever reference has to be made to specific clauses in the Bid Data Sheet or Special Conditions of Contract, these terms shall be printed in bold typeface on Sections I (Instructions to Bidders) and III (General Conditions of Contract), respectively.
- f. For guidelines on the use of Bidding Forms and the procurement of Foreign-Assisted Projects, these will be covered by a separate issuance of the Government Procurement Policy Board.

TABLE OF CONTENTS

GLOSSARY OF	4
TERMS, ABBREVIATIONS, AND ACRONYMS.....	4
SECTION I. INVITATION TO BID	6
SECTION II. INSTRUCTIONS TO BIDDERS.....	8
1. Scope of Bid	8
2. Funding Information	8
3. Bidding Requirements.....	8
4. Corrupt, Fraudulent, Collusive, Coercive, and Obstructive Practices.....	8
5. Eligible Bidders	8
6. Origin of Associated Goods.....	9
7. Subcontracts.....	9
8. Pre-Bid Conference	9
9. Clarification and Amendment of Bidding Documents.....	9
10. Documents Comprising the Bid: Eligibility and Technical Components	9
11. Documents Comprising the Bid: Financial Component.....	10
12. Alternative Bids	10
13. Bid Prices.....	10
14. Bid and Payment Currencies	10
15. Bid Security	11
16. Sealing and Marking of Bids	11
17. Deadline for Submission of Bids	11
18. Opening and Preliminary Examination of Bids	11
19. Detailed Evaluation and Comparison of Bids.....	11
20. Post Qualification.....	12
21. Signing of the Contract.....	12
SECTION III. BID DATA SHEET	13
SECTION IV. GENERAL CONDITIONS OF CONTRACT	14
1. Scope of Contract.....	14
2. Sectional Completion of Works.....	14
3. Possession of Site.....	14
4. The Contractor’s Obligations.....	14
5. Performance Security	14
6. Site Investigation Reports.....	15
7. Warranty	15
8. Liability of the Contractor	15
9. Termination for Other Causes.....	15
10. Dayworks.....	15

11. Program of Work	15
12. Instructions, Inspections and Audits	16
13. Advance Payment	16
14. Progress Payments	16
15. Operating and Maintenance Manuals.....	16
SECTION V. SPECIAL CONDITIONS OF CONTRACT	17
SECTION VI. SPECIFICATION	18
SECTION VII. DRAWINGS	27
SECTION VIII. BILL OF QUANTITIES.....	32
SECTION IX. CHECKLIST OF TECHNICAL AND FINANCIAL DOCUMENTS.....	57
BID FORM.....	58

Glossary of Terms, Abbreviations, and Acronyms

ABC – Approved Budget for the Contract.

ARCC – Allowable Range of Contract Cost.

BAC – Bids and Awards Committee.

Bid – A signed offer or proposal to undertake a contract submitted by a bidder in response to and in consonance with the requirements of the bidding documents. Also referred to as *Proposal* and *Tender*. (2016 revised IRR, Section 5[c])

Bidder – Refers to a contractor, manufacturer, supplier, distributor and/or consultant who submits a bid in response to the requirements of the Bidding Documents. (2016 revised IRR, Section 5[d])

Bidding Documents – The documents issued by the Procuring Entity as the bases for bids, furnishing all information necessary for a prospective bidder to prepare a bid for the Goods, Infrastructure Projects, and/or Consulting Services required by the Procuring Entity. (2016 revised IRR, Section 5[e])

BIR – Bureau of Internal Revenue.

BSP – Bangko Sentral ng Pilipinas.

CDA – Cooperative Development Authority.

Consulting Services – Refer to services for Infrastructure Projects and other types of projects or activities of the GOP requiring adequate external technical and professional expertise that are beyond the capability and/or capacity of the GOP to undertake such as, but not limited to: (i) advisory and review services; (ii) pre-investment or feasibility studies; (iii) design; (iv) construction supervision; (v) management and related services; and (vi) other technical services or special studies. (2016 revised IRR, Section 5[i])

Contract – Refers to the agreement entered into between the Procuring Entity and the Supplier or Manufacturer or Distributor or Service Provider for procurement of Goods and Services; Contractor for Procurement of Infrastructure Projects; or Consultant or Consulting Firm for Procurement of Consulting Services; as the case may be, as recorded in the Contract Form signed by the parties, including all attachments and appendices thereto and all documents incorporated by reference therein.

Contractor – is a natural or juridical entity whose proposal was accepted by the Procuring Entity and to whom the Contract to execute the Work was awarded. Contractor as used in these Bidding Documents may likewise refer to a supplier, distributor, manufacturer, or consultant.

CPI – Consumer Price Index.

DOLE – Department of Labor and Employment.

DTI – Department of Trade and Industry.

Foreign-funded Procurement or Foreign-Assisted Project – Refers to procurement whose funding source is from a foreign government, foreign or international financing institution as specified in the Treaty or International or Executive Agreement. (2016 revised IRR, Section 5[b]).

GFI – Government Financial Institution.

GOCC – Government-owned and/or –controlled corporation.

Goods – Refer to all items, supplies, materials and general support services, except Consulting Services and Infrastructure Projects, which may be needed in the transaction of public businesses or in the pursuit of any government undertaking, project or activity, whether in the nature of equipment, furniture, stationery, materials for construction, or personal property of any kind, including non-personal or contractual services such as the repair and maintenance of equipment and furniture, as well as trucking, hauling, janitorial, security, and related or analogous services, as well as procurement of materials and supplies provided by the Procuring Entity for such services. The term “related” or “analogous services” shall include, but is not limited to, lease or purchase of office space, media advertisements, health maintenance services, and other services essential to the operation of the Procuring Entity. (2016 revised IRR, Section 5[r])

GOP – Government of the Philippines.

Infrastructure Projects – Include the construction, improvement, rehabilitation, demolition, repair, restoration or maintenance of roads and bridges, railways, airports, seaports, communication facilities, civil works components of information technology projects, irrigation, flood control and drainage, water supply, sanitation, sewerage and solid waste management systems, shore protection, energy/power and electrification facilities, national buildings, school buildings, hospital buildings, and other related construction projects of the government. Also referred to as *civil works or works*. (2016 revised IRR, Section 5[u])

LGUs – Local Government Units.

NFCC – Net Financial Contracting Capacity.

NGA – National Government Agency.

PCAB – Philippine Contractors Accreditation Board.

PhilGEPS - Philippine Government Electronic Procurement System.

Procurement Project – refers to a specific or identified procurement covering goods, infrastructure project or consulting services. A Procurement Project shall be described, detailed, and scheduled in the Project Procurement Management Plan prepared by the agency which shall be consolidated in the procuring entity's Annual Procurement Plan. (GPPB Circular No. 06-2019 dated 17 July 2019)

PSA – Philippine Statistics Authority.

SEC – Securities and Exchange Commission.

SLCC – Single Largest Completed Contract.

UN – United Nations.

Section I. Invitation to Bid



West Visayas State University JANIUAY CAMPUS

(Formerly Janiuay Polytechnic College, Don Tiburcio A. Lutero National Comp. High School, Janiuay Nat'l Comp. High School, Janiuay National Vocational High School, Janiuay High School)

OFFICE OF THE BIDS AND AWARDS COMMITTEE

Janiuay, Iloilo, Philippines

*Trunkline: (063) (033) 330-3485

* Website: www.wvsu.edu.ph *Email Address: supply.jc@wvsu.edu.ph



INVITATION TO BID FOR CONSTRUCTION OF 3-CUBICLE TOILET BETWEEN ICT AND TIRADOR BUILDING IB No. 2022-08

1. The West Visayas State University - Janiuay Campus, through the 2022 Fund 164 intends to apply the sum of Eight Hundred Thirty-One Thousand Four Hundred Seventy-Eight Pesos and Eight Centavos (PhP831,478.08) Only being the Approved Budget for the Contract (ABC) to payments under the contract for Construction of 3-Cubicle Toilet between ICT and Tirador Building with I.B. No. 2022-08. Bids received in excess of the ABC shall be automatically rejected at bid opening.
2. The West Visayas State University – Janiuay Campus now invites bids for the above Procurement Project. Completion of the Works is required Fifty (50) Calendar Days. Bidders should have completed a contract similar to the Project. The description of an eligible bidder is contained in the Bidding Documents, particularly, in Section II (Instructions to Bidders).
3. Bidding will be conducted through open competitive bidding procedures using a non-discretionary “*pass/fail*” criterion as specified in the 2016 revised Implementing Rules and Regulations (IRR) of Republic Act (RA) No. 9184.
4. Interested bidders may obtain further information from West Visayas State University – Janiuay Campus and inspect the Bidding Documents at the address given below from 8:00 A.M. – 5:00 P.M.
5. A complete set of Bidding Documents may be acquired by interested bidders on September 27 to October 17, 2022 from given address and website/s below *and upon payment of the applicable fee for the Bidding Documents, pursuant to the latest Guidelines issued by the GPPB, in the amount of PhP1,000.00*. The Procuring Entity shall allow the bidder to present its proof of payment for the fees *in person, by facsimile, or through electronic means*.
6. The West Visayas State University – Janiuay Campus will hold a Pre-Bid Conference¹ on October 05, 2022; 9:00 A.M. through video conferencing or webcasting via google meet/zoom, which shall be open to prospective bidders.
7. Bids must be duly received by the BAC Secretariat through (i) **manual submission at the office address as indicated below**, (ii) **online or electronic submission as indicated below**, or (iii) **both** on or before October 17, 2022; 9:00 A.M. Late bids shall not be accepted.
8. All Bids must be accompanied by a bid security in any of the acceptable forms and in the amount stated in **ITB** Clause 16.

¹ May be deleted in case the ABC is less than One Million Pesos (PhP1,000,000) where the Procuring Entity may not hold a Pre-Bid Conference.

9. Bid opening shall be on October 17, 2022; 9:00 A.M. at the given address below and/or through *electronic submission using a two-factor security procedure consisting of an archive format compression and password protection with separate password for technical and financial component envelope.* Bids will be opened in the presence of the bidders' representatives who choose to attend the activity.
10. Requiring the Bidders to submit their bids using a two-factor security procedure consisting of an archive format compression and password protection with separate password for technical and financial component envelope and disclose the password for accessing their respective bid submission only during the actual bid opening.
11. The West Visayas State University – Janiuay Campus reserves the right to reject any and all bids, declare a failure of bidding, or not award the contract at any time prior to contract award in accordance with Sections 35.6 and 41 of the 2016 revised Implementing Rules and Regulations (IRR) of RA No. 9184, without thereby incurring any liability to the affected bidder or bidders.
12. Only one (1) representative per bidder will be allowed to attend the bid opening. Health and safety protocols like wearing of face mask and physical distancing will be strictly observed.
13. For further information, please refer to:

RIZA R. LADON
BAC Secretariat
West Visayas State University – Janiuay Campus
Locsin St., Janiuay, Iloilo
09950589425
14. You may visit the following websites:
For downloading of Bidding Documents: www.wvsu.edu.ph
For online bid submission: supply.jc@wvsu.edu.ph

September 22, 2022


FLORENCIO L. CORDURA, Jr., MAT. Math.
BAC, Chairperson

Section II. Instructions to Bidders

1. Scope of Bid

The Procuring Entity, West Visayas State University – Janiuay Campus invites Bids for the Construction of 3-Cubicle Toilet between ICT and Tirador Building, with Project Identification Number I.B. No. 2022-08.

The Procurement Project (referred to herein as “Project”) is for the construction of Works, as described in Section VI (Specifications).

2. Funding Information

2.1. The GOP through the source of funding as indicated below for FY 2022 in the amount of PhP831,478.08.

2.2. The source of funding is:

a. NGA, the General Appropriations Act or Special Appropriations.

3. Bidding Requirements

The Bidding for the Project shall be governed by all the provisions of RA No. 9184 and its 2016 revised IRR, including its Generic Procurement Manual and associated policies, rules and regulations as the primary source thereof, while the herein clauses shall serve as the secondary source thereof.

Any amendments made to the IRR and other GPPB issuances shall be applicable only to the ongoing posting, advertisement, or invitation to bid by the BAC through the issuance of a supplemental or bid bulletin.

The Bidder, by the act of submitting its Bid, shall be deemed to have inspected the site, determined the general characteristics of the contracted Works and the conditions for this Project, such as the location and the nature of the work; (b) climatic conditions; (c) transportation facilities; (c) nature and condition of the terrain, geological conditions at the site communication facilities, requirements, location and availability of construction aggregates and other materials, labor, water, electric power and access roads; and (d) other factors that may affect the cost, duration and execution or implementation of the contract, project, or work and examine all instructions, forms, terms, and project requirements in the Bidding Documents.

4. Corrupt, Fraudulent, Collusive, Coercive, and Obstructive Practices

The Procuring Entity, as well as the Bidders and Contractors, shall observe the highest standard of ethics during the procurement and execution of the contract. They or through an agent shall not engage in corrupt, fraudulent, collusive, coercive, and obstructive practices defined under Annex “I” of the 2016 revised IRR of RA No. 9184 or other integrity violations in competing for the Project.

5. Eligible Bidders

5.1. Only Bids of Bidders found to be legally, technically, and financially capable will be evaluated.

5.2. The Bidder must have an experience of having completed a Single Largest Completed Contract (SLCC) that is similar to this Project, equivalent to at least

fifty percent (50%) of the ABC adjusted, if necessary, by the Bidder to current prices using the PSA's CPI, except under conditions provided for in Section 23.4.2.4 of the 2016 revised IRR of RA No. 9184.

A contract is considered to be "similar" to the contract to be bid if it has the major categories of work stated in the **BDS**.

5.3. For Foreign-funded Procurement, the Procuring Entity and the foreign government/foreign or international financing institution may agree on another track record requirement, as specified in the Bidding Document prepared for this purpose.

5.4. The Bidders shall comply with the eligibility criteria under Section 23.4.2 of the 2016 IRR of RA No. 9184.

6. Origin of Associated Goods

There is no restriction on the origin of Goods other than those prohibited by a decision of the UN Security Council taken under Chapter VII of the Charter of the UN.

7. Subcontracts

7.1. The Bidder may subcontract portions of the Project to the extent allowed by the Procuring Entity as stated herein, but in no case more than fifty percent (50%) of the Project.

The Procuring Entity has prescribed that:

b. Subcontracting is not allowed.

8. Pre-Bid Conference

The Procuring Entity will hold a pre-bid conference for this Project on the specified date and time and either at its physical address and/or through videoconferencing/webcasting as indicated in paragraph 6 of the **IB**.

9. Clarification and Amendment of Bidding Documents

Prospective bidders may request for clarification on and/or interpretation of any part of the Bidding Documents. Such requests must be in writing and received by the Procuring Entity, either at its given address or through electronic mail indicated in the **IB**, at least ten (10) calendar days before the deadline set for the submission and receipt of Bids.

10. Documents Comprising the Bid: Eligibility and Technical Components

10.1. The first envelope shall contain the eligibility and technical documents of the Bid as specified in **Section IX. Checklist of Technical and Financial Documents**.

10.2. If the eligibility requirements or statements, the bids, and all other documents for submission to the BAC are in foreign language other than English, it must be accompanied by a translation in English, which shall be authenticated by the appropriate Philippine foreign service establishment, post, or the equivalent office having jurisdiction over the foreign bidder's affairs in the Philippines. For Contracting Parties to the Apostille Convention, only the translated documents shall be authenticated through an apostille pursuant to GPPB

Resolution No. 13-2019 dated 23 May 2019. The English translation shall govern, for purposes of interpretation of the bid.

- 10.3. A valid PCAB License is required, and in case of joint ventures, a valid special PCAB License, and registration for the type and cost of the contract for this Project. Any additional type of Contractor license or permit shall be indicated in the **BDS**.
- 10.4. A List of Contractor's key personnel (e.g., Project Manager, Project Engineers, Materials Engineers, and Foremen) assigned to the contract to be bid, with their complete qualification and experience data shall be provided. These key personnel must meet the required minimum years of experience set in the **BDS**.
- 10.5. A List of Contractor's major equipment units, which are owned, leased, and/or under purchase agreements, supported by proof of ownership, certification of availability of equipment from the equipment lessor/vendor for the duration of the project, as the case may be, must meet the minimum requirements for the contract set in the **BDS**.

11. Documents Comprising the Bid: Financial Component

- 11.1. The second bid envelope shall contain the financial documents for the Bid as specified in **Section IX. Checklist of Technical and Financial Documents**.
- 11.2. Any bid exceeding the ABC indicated in paragraph 1 of the **IB** shall not be accepted.
- 11.3. For Foreign-funded procurement, a ceiling may be applied to bid prices provided the conditions are met under Section 31.2 of the 2016 revised IRR of RA No. 9184.

12. Alternative Bids

Bidders shall submit offers that comply with the requirements of the Bidding Documents, including the basic technical design as indicated in the drawings and specifications. Unless there is a value engineering clause in the **BDS**, alternative Bids shall not be accepted.

13. Bid Prices

All bid prices for the given scope of work in the Project as awarded shall be considered as fixed prices, and therefore not subject to price escalation during contract implementation, except under extraordinary circumstances as determined by the NEDA and approved by the GPPB pursuant to the revised Guidelines for Contract Price Escalation guidelines.

14. Bid and Payment Currencies

- 14.1. Bid prices may be quoted in the local currency or tradeable currency accepted by the BSP at the discretion of the Bidder. However, for purposes of bid evaluation, Bids denominated in foreign currencies shall be converted to Philippine currency based on the exchange rate as published in the BSP reference rate bulletin on the day of the bid opening.
- 14.2. *Payment of the contract price shall be made in:*
 - a. Philippine Pesos.

15. Bid Security

- 15.1. The Bidder shall submit a Bid Securing Declaration or any form of Bid Security in the amount indicated in the **BDS**, which shall be not less than the percentage of the ABC in accordance with the schedule in the **BDS**.
- 15.2. The Bid and bid security shall be valid until February 13, 2023. Any bid not accompanied by an acceptable bid security shall be rejected by the Procuring Entity as non-responsive.

16. Sealing and Marking of Bids

Each Bidder shall submit one copy of the first and second components of its Bid.

The Procuring Entity may request additional hard copies and/or electronic copies of the Bid. However, failure of the Bidders to comply with the said request shall not be a ground for disqualification.

If the Procuring Entity allows the submission of bids through online submission to the given website or any other electronic means, the Bidder shall submit an electronic copy of its Bid, which must be digitally signed. An electronic copy that cannot be opened or is corrupted shall be considered non-responsive and, thus, automatically disqualified.

17. Deadline for Submission of Bids

The Bidders shall submit on the specified date and time and either at its physical address or through online submission as indicated in paragraph 7 of the **IB**.

18. Opening and Preliminary Examination of Bids

- 18.1. The BAC shall open the Bids in public at the time, on the date, and at the place specified in paragraph 9 of the **IB**. The Bidders' representatives who are present shall sign a register evidencing their attendance. In case videoconferencing, webcasting or other similar technologies will be used, attendance of participants shall likewise be recorded by the BAC Secretariat.

In case the Bids cannot be opened as scheduled due to justifiable reasons, the rescheduling requirements under Section 29 of the 2016 revised IRR of RA No. 9184 shall prevail.

- 18.2. The preliminary examination of Bids shall be governed by Section 30 of the 2016 revised IRR of RA No. 9184.

19. Detailed Evaluation and Comparison of Bids

- 19.1. The Procuring Entity's BAC shall immediately conduct a detailed evaluation of all Bids rated "*passed*" using non-discretionary pass/fail criteria. The BAC shall consider the conditions in the evaluation of Bids under Section 32.2 of 2016 revised IRR of RA No. 9184.
- 19.2. If the Project allows partial bids, all Bids and combinations of Bids as indicated in the **BDS** shall be received by the same deadline and opened and evaluated simultaneously so as to determine the Bid or combination of Bids offering the lowest calculated cost to the Procuring Entity. Bid Security as required by **ITB** Clause 16 shall be submitted for each contract (lot) separately.

19.3. In all cases, the NFCC computation pursuant to Section 23.4.2.6 of the 2016 revised IRR of RA No. 9184 must be sufficient for the total of the ABCs for all the lots participated in by the prospective Bidder.

20. Post Qualification

Within a non-extendible period of five (5) calendar days from receipt by the Bidder of the notice from the BAC that it submitted the Lowest Calculated Bid, the Bidder shall submit its latest income and business tax returns filed and paid through the BIR Electronic Filing and Payment System (eFPS), and other appropriate licenses and permits required by law and stated in the **BDS**.

21. Signing of the Contract

The documents required in Section 37.2 of the 2016 revised IRR of RA No. 9184 shall form part of the Contract. Additional Contract documents are indicated in the **BDS**.

Section III. Bid Data Sheet

ITB Clause																
5.2	For this purpose, contracts similar to the Project refer to contracts which have the same major categories of work, which shall be: <i>Construction of comfort rooms, Plumbing Installation, Lay out of water line and sewer line.</i>															
7.1	<i>Not Applicable.</i>															
10.3	<i>No Additional Requirements.</i>															
10.4	The key personnel must meet the required minimum years of experience set below: <table border="1" style="width: 100%; border-collapse: collapse;"> <thead> <tr> <th style="text-align: center;"><u>Key Personnel</u></th> <th style="text-align: center;"><u>General Experience</u></th> <th style="text-align: center;"><u>Relevant Experience</u></th> </tr> </thead> <tbody> <tr> <td><i>Project Engineer</i></td> <td><i>Building Construction</i></td> <td style="text-align: center;"><i>3 years</i></td> </tr> <tr> <td><i>Site Engineer</i></td> <td><i>Building Construction</i></td> <td style="text-align: center;"><i>3 years</i></td> </tr> <tr> <td><i>Safety Officer</i></td> <td><i>Building Construction</i></td> <td style="text-align: center;"><i>3 years</i></td> </tr> <tr> <td><i>First Aider</i></td> <td><i>Building Construction</i></td> <td style="text-align: center;"><i>3 years</i></td> </tr> </tbody> </table>	<u>Key Personnel</u>	<u>General Experience</u>	<u>Relevant Experience</u>	<i>Project Engineer</i>	<i>Building Construction</i>	<i>3 years</i>	<i>Site Engineer</i>	<i>Building Construction</i>	<i>3 years</i>	<i>Safety Officer</i>	<i>Building Construction</i>	<i>3 years</i>	<i>First Aider</i>	<i>Building Construction</i>	<i>3 years</i>
<u>Key Personnel</u>	<u>General Experience</u>	<u>Relevant Experience</u>														
<i>Project Engineer</i>	<i>Building Construction</i>	<i>3 years</i>														
<i>Site Engineer</i>	<i>Building Construction</i>	<i>3 years</i>														
<i>Safety Officer</i>	<i>Building Construction</i>	<i>3 years</i>														
<i>First Aider</i>	<i>Building Construction</i>	<i>3 years</i>														
10.5	The minimum major equipment requirements are the following: <table border="1" style="width: 100%; border-collapse: collapse;"> <thead> <tr> <th style="text-align: center;"><u>Equipment</u></th> <th style="text-align: center;"><u>Capacity</u></th> <th style="text-align: center;"><u>Number of Units</u></th> </tr> </thead> <tbody> <tr> <td><i>Bagger concrete mixer</i></td> <td style="text-align: center;"><i>1 bag</i></td> <td style="text-align: center;"><i>1</i></td> </tr> <tr> <td><i>Power tools</i></td> <td style="text-align: center;"><i>standard</i></td> <td style="text-align: center;"><i>1</i></td> </tr> <tr> <td><i>Concrete vibrator</i></td> <td style="text-align: center;"><i>standard</i></td> <td style="text-align: center;"><i>1</i></td> </tr> <tr> <td><i>Electric cut-off</i></td> <td style="text-align: center;"><i>standard</i></td> <td style="text-align: center;"><i>1</i></td> </tr> </tbody> </table>	<u>Equipment</u>	<u>Capacity</u>	<u>Number of Units</u>	<i>Bagger concrete mixer</i>	<i>1 bag</i>	<i>1</i>	<i>Power tools</i>	<i>standard</i>	<i>1</i>	<i>Concrete vibrator</i>	<i>standard</i>	<i>1</i>	<i>Electric cut-off</i>	<i>standard</i>	<i>1</i>
<u>Equipment</u>	<u>Capacity</u>	<u>Number of Units</u>														
<i>Bagger concrete mixer</i>	<i>1 bag</i>	<i>1</i>														
<i>Power tools</i>	<i>standard</i>	<i>1</i>														
<i>Concrete vibrator</i>	<i>standard</i>	<i>1</i>														
<i>Electric cut-off</i>	<i>standard</i>	<i>1</i>														
12	<i>Not Applicable.</i>															
15.1	The bid security shall be in the form of a Bid Securing Declaration or any of the following forms and amounts: <ol style="list-style-type: none"> a. The amount of not less than <u>PhP16,629.56</u> [two percent (2%) of ABC], if bid security is in cash, cashier's/manager's check, bank draft/guarantee or irrevocable letter of credit; b. The amount of not less than <u>PhP41,573.90</u> [five percent (5%) of ABC] if bid security is in Surety Bond. 															
19.2	Partial bids are allowed, as follows: <i>Not Applicable.</i>															
20	<i>No Additional Requirements.</i>															
21	Additional contract documents relevant to the Project that may be required by existing laws and/or the Procuring Entity, such as construction schedule and S-curve, manpower schedule, construction methods, equipment utilization schedule, construction safety and health program approved by the DOLE, and other acceptable tools of project scheduling.															

Section IV. General Conditions of Contract

1. Scope of Contract

This Contract shall include all such items, although not specifically mentioned, that can be reasonably inferred as being required for its completion as if such items were expressly mentioned herein. All the provisions of RA No. 9184 and its 2016 revised IRR, including the Generic Procurement Manual, and associated issuances, constitute the primary source for the terms and conditions of the Contract, and thus, applicable in contract implementation. Herein clauses shall serve as the secondary source for the terms and conditions of the Contract.

This is without prejudice to Sections 74.1 and 74.2 of the 2016 revised IRR of RA No. 9184 allowing the GPPB to amend the IRR, which shall be applied to all procurement activities, the advertisement, posting, or invitation of which were issued after the effectivity of the said amendment.

2. Sectional Completion of Works

If sectional completion is specified in the **Special Conditions of Contract (SCC)**, references in the Conditions of Contract to the Works, the Completion Date, and the Intended Completion Date shall apply to any Section of the Works (other than references to the Completion Date and Intended Completion Date for the whole of the Works).

3. Possession of Site

4.1. The Procuring Entity shall give possession of all or parts of the Site to the Contractor based on the schedule of delivery indicated in the **SCC**, which corresponds to the execution of the Works. If the Contractor suffers delay or incurs cost from failure on the part of the Procuring Entity to give possession in accordance with the terms of this clause, the Procuring Entity's Representative shall give the Contractor a Contract Time Extension and certify such sum as fair to cover the cost incurred, which sum shall be paid by Procuring Entity.

4.2. If possession of a portion is not given by the above date, the Procuring Entity will be deemed to have delayed the start of the relevant activities. The resulting adjustments in contract time to address such delay may be addressed through contract extension provided under Annex "E" of the 2016 revised IRR of RA No. 9184.

4. The Contractor's Obligations

The Contractor shall employ the key personnel named in the Schedule of Key Personnel indicating their designation, in accordance with **ITB** Clause 10.3 and specified in the **BDS**, to carry out the supervision of the Works.

The Procuring Entity will approve any proposed replacement of key personnel only if their relevant qualifications and abilities are equal to or better than those of the personnel listed in the Schedule.

5. Performance Security

5.1. Within ten (10) calendar days from receipt of the Notice of Award from the Procuring Entity but in no case later than the signing of the contract by both

parties, the successful Bidder shall furnish the performance security in any of the forms prescribed in Section 39 of the 2016 revised IRR.

- 5.2. The Contractor, by entering into the Contract with the Procuring Entity, acknowledges the right of the Procuring Entity to institute action pursuant to RA No. 3688 against any subcontractor be they an individual, firm, partnership, corporation, or association supplying the Contractor with labor, materials and/or equipment for the performance of this Contract.

6. Site Investigation Reports

The Contractor, in preparing the Bid, shall rely on any Site Investigation Reports referred to in the **SCC** supplemented by any information obtained by the Contractor.

7. Warranty

- 7.1. In case the Contractor fails to undertake the repair works under Section 62.2.2 of the 2016 revised IRR, the Procuring Entity shall forfeit its performance security, subject its property(ies) to attachment or garnishment proceedings, and perpetually disqualify it from participating in any public bidding. All payables of the GOP in his favor shall be offset to recover the costs.
- 7.2. The warranty against Structural Defects/Failures, except that occasioned-on force majeure, shall cover the period from the date of issuance of the Certificate of Final Acceptance by the Procuring Entity. Specific duration of the warranty is found in the **SCC**.

8. Liability of the Contractor

Subject to additional provisions, if any, set forth in the **SCC**, the Contractor's liability under this Contract shall be as provided by the laws of the Republic of the Philippines. If the Contractor is a joint venture, all partners to the joint venture shall be jointly and severally liable to the Procuring Entity.

9. Termination for Other Causes

Contract termination shall be initiated in case it is determined *prima facie* by the Procuring Entity that the Contractor has engaged, before, or during the implementation of the contract, in unlawful deeds and behaviors relative to contract acquisition and implementation, such as, but not limited to corrupt, fraudulent, collusive, coercive, and obstructive practices as stated in **ITB** Clause 4.

10. Dayworks

Subject to the guidelines on Variation Order in Annex "E" of the 2016 revised IRR of RA No. 9184, and if applicable as indicated in the **SCC**, the Dayworks rates in the Contractor's Bid shall be used for small additional amounts of work only when the Procuring Entity's Representative has given written instructions in advance for additional work to be paid for in that way.

11. Program of Work

- 11.1. The Contractor shall submit to the Procuring Entity's Representative for approval the said Program of Work showing the general methods, arrangements, order, and timing for all the activities in the Works. The submissions of the Program of Work are indicated in the **SCC**.

11.2. The Contractor shall submit to the Procuring Entity's Representative for approval an updated Program of Work at intervals no longer than the period stated in the **SCC**. If the Contractor does not submit an updated Program of Work within this period, the Procuring Entity's Representative may withhold the amount stated in the **SCC** from the next payment certificate and continue to withhold this amount until the next payment after the date on which the overdue Program of Work has been submitted.

12. Instructions, Inspections and Audits

The Contractor shall permit the GOP or the Procuring Entity to inspect the Contractor's accounts and records relating to the performance of the Contractor and to have them audited by auditors of the GOP or the Procuring Entity, as may be required.

13. Advance Payment

The Procuring Entity shall, upon a written request of the Contractor which shall be submitted as a Contract document, make an advance payment to the Contractor in an amount not exceeding fifteen percent (15%) of the total contract price, to be made in lump sum, or at the most two installments according to a schedule specified in the **SCC**, subject to the requirements in Annex "E" of the 2016 revised IRR of RA No. 9184.

14. Progress Payments

The Contractor may submit a request for payment for Work accomplished. Such requests for payment shall be verified and certified by the Procuring Entity's Representative/Project Engineer. Except as otherwise stipulated in the **SCC**, materials and equipment delivered on the site but not completely put in place shall not be included for payment.

15. Operating and Maintenance Manuals

15.1. If required, the Contractor will provide "as built" Drawings and/or operating and maintenance manuals as specified in the **SCC**.

15.2. If the Contractor does not provide the Drawings and/or manuals by the dates stated above, or they do not receive the Procuring Entity's Representative's approval, the Procuring Entity's Representative may withhold the amount stated in the **SCC** from payments due to the Contractor.

Section V. Special Conditions of Contract

GCC Clause	
2	<i>Not Applicable.</i>
4.1	<i>Not Applicable.</i>
6	The site investigation reports are: <ul style="list-style-type: none"> • <i>The ground is composed mostly of soil and vegetation.</i> • <i>There is a concrete path structure in the front area of the site</i>
7.2	Twenty (20) years.
10	b. No dayworks are applicable to the contract.
11.1	The Contractor shall submit the Program of Work to the Procuring Entity's Representative within <i>five (5) calendar days</i> of delivery of the Notice of Award.
11.2	The amount to be withheld for late submission of an updated Program of Work is <i>PhP 5,000.00</i>
13	The amount of the advance payment <i>shall not exceed 15% of the total contract price and schedule of payment.</i>
14	<i>Not Allowed.</i>
15.1	The date by which operating and maintenance manuals are required is <i>upon completion.</i> The date by which "as built" drawings are required is <i>upon completion.</i>
15.2	The amount to be withheld for failing to produce "as built" drawings and/or operating and maintenance manuals by the date required is <i>PhP 50,000.00.</i>

Section VI. Specification



West Visayas State University
JANIUAY CAMPUS
PLANNING AND DEVELOPMENT OFFICE
(Formerly Janiuay Polytechnic College, Don Tiburcio A. Lutero National
Comp. High School, Janiuay Nat'l Comp. High School, Janiuay National
Vocational High School, Janiuay High School)
Janiuay, Iloilo, Philippines
*Trunkline: (063) (033) 330-3485
* Website: www.wvsu.edu.ph *Email Address: fcordura@wvsu.edu.ph



Project Title : **Construction of 3-Cubicle Toilet between ICT and Tirador Building**

Location : **WVSU-JANIUAY CAMPUS, JANIUAY, ILOILO**

BUILDING SPECIFICATION

A. GENERAL REQUIREMENTS

1. THE STRUCTURAL DRAWINGS SHALL BE USED IN CONJUNCTION WITH THE SPECIFICATIONS, THE ARCHITECTURAL, CIVIL, PLUMBING, ELECTRICAL AND MECHANICAL DRAWINGS.
2. THE CONTRACTOR SHALL VERIFY ALL DIMENSIONS AND CONDITIONS AT THE SITE, WHICH SHALL INCLUDE THE DIMENSION AND LOCATION OF OPENINGS, GROOVES, REGLETS, PIPE SLEEVES, CONDUITS AND EMBEDDED OR ATTACHED ITEMS TO CONCRETE, ET CETERA.
3. THE CONTRACTOR SHALL PROVIDE ALL MEASURES NECESSARY TO PROTECT EXISTING AND NEW CONSTRUCTION. THIS SHALL INCLUDE BUT NOT LIMITED TO BRACING AND SHORING FOR LOAD IMPOSED DURING CONSTRUCTION.
4. ALL FOUNDATIONS SHALL REST ON 50MM THICK LEAN CONCRETE AT $f'c = 6.895$ MPA (1000 PSI) UNLESS NOTED OTHERWISE.
5. GENERAL NOTES AND TYPICAL DETAILS SHALL APPLY TO ALL DRAWINGS UNLESS SHOWN OR NOTED OTHERWISE.
6. ALL BAR DIAMETERS AND SPACINGS ARE IN MILLIMETER UNLESS OTHERWISE NOTED.
7. ALL DIMENSIONS SHALL TAKE PRECEDENCE OVER SCALES SHOWN ON PLANS, SECTIONS AND DETAILS. ALL DIMENSIONS ARE IN MILLIMETER UNLESS OTHERWISE NOTED.

A.1 MOBILIZATION AND DEMOBILIZATION

AT ALL TIMES WHEN ON SITE, THE CONTRACTOR'S (AND ASSOCIATED SUBCONTRACTORS') EMPLOYEES SHALL CONSPICUOUSLY WEAR IDENTIFICATION (ID) BADGE STATING FIRM NAME, NAME OF BEARER, AREA CLEARANCE AND PERIOD OF VALIDITY.

THE CONTRACTOR AT HIS OWN COST SHALL PROVIDE THE NECESSARY ID TO ALL OF HIS EMPLOYEES AND OR SUBCONTRACTOR'S EMPLOYEES WORKING EITHER DIRECTLY OR INDIRECTLY UNDER ITS SUPERVISION. THE OWNER SHALL PROVIDE FOR DAILY REGISTRATION SHEETS TO INDICATE PRESENCE ON SITE. EACH EMPLOYEE OF THE CONTRACTOR IS OBLIGED TO SIGN HIS/HER PRESENCE ON AND OFF ON THE SHEET EVERY DAY.

AT THE REQUEST OF SITE SECURITY PERSONNEL OR SECURITY GUARD, ALL CONTRACTOR EMPLOYEES MAY BE SUBJECT TO SEARCH AND SUCH REQUEST MUST BE GRANTED.

ALL CONSTRUCTION ACTIVITIES ON SITE WILL BE MANAGED BY THE OWNER'S APPOINTED PROJECT ENGINEER. CONTRACTOR WILL BE ADVISED BY THE PERSON HOLDING THIS POSITION WHEN REQUESTING APPROVAL TO MOBILIZE TO SITE. THE CONTRACTOR'S APPOINTED ENGINEER, HEALTH &



SAFETY OFFICER SHALL CONDUCT REGULAR INSPECTIONS AND SUBMIT REPORTS IN RESPONSE TO THE CONTRACTOR'S WORK PRACTICES AND SAFETY MANAGEMENT SYSTEMS IN CONJUNCTION WITH THE OWNER.

CONTRACTOR SHALL PROVIDE THE NEEDED PERSONNEL FOR THE PROJECT WITH THE COORDINATION OF THE OWNER'S SECURITY WITH RESPECT TO THE ENTRANCE OF THE OWNER'S PREMISES. THE CONTRACTOR MUST ABIDE TO THE RULES AND REGULATIONS WHEN IT COMES TO THE HEALTH AND SAFETY PROTOCOLS IMPLEMENTED BY THE OWNER.

A.2 DEMOLITION

GIVE SUFFICIENT NOTICE SO THAT INSPECTION MAY BE MADE OF ADJOINING STRUCTURES AND SERVICES BEFORE COMMENCEMENT OF DEMOLITION.

IF REQUIRED, PHOTOGRAPH THE AREAS ADJOINING THE DEMOLITION WORK FOR FUTURE REFERENCE. REFER TO PROJECT SPECIFIC REQUIREMENTS SECTION OF THE REQUEST FOR TENDER.

EXCEPT FOR MATERIALS TO BE RECOVERED AND RETAINED BY THE SUPERINTENDENT OR RE-USED, TAKE POSSESSION OF DEMOLISHED MATERIALS AND REMOVE THEM FROM THE SITE. DO NOT BURN OR BURY DEMOLISHED MATERIALS ON THE SITE. PREVENT SPILLAGE OF DEMOLISHED MATERIALS IN TRANSIT. REFER TO PROJECT SPECIFIC REQUIREMENTS SECTION OF THE REQUEST FOR TENDER.

B. EXCAVATION

LIMIT CLEARING TO AREAS OF CUT AND FILL AND AREAS TO BE OCCUPIED BY WORKS, SUCH AS STRUCTURES PAVING, EXCAVATION, REGRADING, AND LANDSCAPE WORK OR TO OTHER DESIGNATED AREAS TO BE CLEARED.

AREAS OF CUT OR FILL AND AREAS OCCUPIED BY STRUCTURES, PAVEMENT AND EMBANKMENTS.
MAXIMUM DEPTH: 200 MM.

C. BACKFILL

STOCKPILE SITE TOPSOIL REQUIRED FOR RE-USE AND IMPORTED TOPSOIL WHERE NECESSARY. ESTABLISH STOCKPILES TO A MAXIMUM HEIGHT OF 1.5 M. PROTECT STOCKPILES FROM CONTAMINATION BY OTHER EXCAVATED MATERIAL, WEEDS AND BUILDING DEBRIS.

GROUND UNSUITABLE FOR THE PURPOSES OF THE WORKS, INCLUDING FILL LIABLE TO SUBSIDENCE, GROUND CONTAINING CAVITIES, FAULTS OR FISSURES, GROUND CONTAMINATED BY HARMFUL SUBSTANCES AND GROUND WHICH IS OR BECOMES SOFT, WET OR UNSTABLE.

D. CONCRETE WORKS

UNLESS OTHERWISE INDICATED IN PLANS OR NOTED IN THE SPECIFICATIONS THE MINIMUM 28-DAYS CYLINDER COMPRESSIVE OF CONCRETE f_c' SHALL BE



4.0 CONCRETE

a.) FOOTINGS, FOOTING TIE BEAMS, RETAINING WALLS 20.7Mpa (3000 Psi). AND BASEMENT WATER TANK.

b.) COLUMNS, PEDESTALS, AND SHEAR WALLS 20.7Mpa (3000 Psi).

c.) FLOOR SLABS, BEAMS AND GIRDERS 20.7Mpa (3000 Psi).

d.) DECK FLOORS, CANOPIES 20.7Mpa (3000 Psi).

e.) PARTITIONS, CURTAIN WALLS, BEDDED SLABS 17.0Mpa (2500 Psi).

SIDEWALKS, CURBS, AND GUTTER & OTHER
NON-STRUCTURAL ELEMENTS

f.) LEAN CONCRETE 10.0Mpa (1500 Psi).

CONCRETE SHALL BE DEPOSITED IN ITS FINAL POSITION WITHOUT SEGREGATION, RE -HANDLING OR FLOWING, PLACING SHALL BE DONE PREFERABLY WITH BUGGIES, BUCKETS OR WHEEL BARROWS.

NO DEPOSITING OF CONCRETE SHALL BE ALLOWED WITHOUT THE USE OF VIBRATORS UNLESS AUTHORIZED IN WRITING BY THE DESIGNERS AND ONLY FOR

USUAL CONDITIONS WHERE VIBRATION IS EXTREMELY DIFFICULT TO ACCOMPLISH.

c.) AGGREGATE SIZE SHALL BE AS FOLLOWS:

a.) 20 mm. SUSPENDED SLABS, BEAMS, GIRDERS, WALLS AND COLUMNS.

b.) 40 mm. FOOTING, THICKENED SLABS AND SLAB ON GRADE.

d.) MINIMUM COVERING OF CONCRETE FOR REINFORCING BARS SHALL NOT BE LESS THAN:

-75mm. UNIFORMED CONCRETE DEPOSITED AGAINST GROUND.

-50mm. FORMED CONCRETE AGAINST GROUND OR EXPOSED TO WEATHER FOR BARS LARGER THAN 16MM. IN DIAMETER.

-40mm. FORMED CONCRETE AGAINST GROUND OR EXPOSED TO WEATHER FOR BARS 16MM. IN DIAMETER AND SMALLER.

-40mm. BEAMS AND COLUMNS NOT EXPOSED TO GROUND OR TO WATER.

-20mm. SLABS AND WALLS NOT TO EXPOSED TO GROUND OR TO WEATHER.

-75mm. CONCRETE EXPOSED TO WEATHER.

WELDED WIRE FABRIC SHALL BE MADE OF COLD DRAWN WIRE AND SHALL CONFORM TO ASTM A185.

PRIOR TO PLACING CONCRETE, ALL REINFORCING STEEL ANCHOR BOLTS, DOWELS, EMBEDDED STRUCTURAL STEEL SHAPES, BARS, PLATES, OR OTHER INSERTS SHALL BE WELL SECURED IN POSITION AND APPROVED BY THE ENGINEER.

EXPOSED EDGES OF CONCRETE SHALL HAVE 25 MM. (1") CHAMFER UNLESS OTHERWISE NOTED OR DETAILED.

CONSTRUCTION JOINTS IN ALL FLOORS SHALL BE LOCATED WITHIN THE MIDDLE THIRD OF SPANS OF SLABS, BEAMS, JOINTS, GIRDERS SHALL BE OFFSET A MINIMUM DISTANCE OF TWO TIMES THE WIDTH OF INTERSECTING LINES



E. REINFORCED STEEL

GRADE: ASTM A 615 GRADE 40 12 DIA. TO 25 DIA. ASTM A 615 GRADE 33 10 DIA. 10 DIA. AND SMALLER
ASTM A 185 OR BS 4483 SLAB ON GRADE
DEFORMED BARS ($f_y = 276$ Mpa) DEFORMED BARS ($f_y = 230$ Mpa) WELDED WIRE FABRIC ($f_y = 500$ Mpa)

ALL BARS SHALL BE BENT COLD UNLESS PERMITTED BY THE STRUCTURAL ENGINEER.

ALL REINFORCING SHALL BE SUPPORTED IN CONFORMANCE WITH THE MANUAL OF STANDARD PRACTICE DETAILING REINFORCED CONCRETE STRUCTURE (ACI 315 LATEST EDITION).

ALL REINFORCING BARS SHALL BE CLEANED THOROUGHLY OF ALL LOOSE RUST, SOIL OR OTHER MATERIAL IMMEDIATELY PRIOR TO PLACING CONCRETE.

ALL WELDING OF REINFORCEMENT SHALL CONFORM TO THE PROVISIONS OF THE STRUCTURAL WELDING CODE REINFORCING STEEL, AWS D 1.4.

A FULL MECHANICAL CONNECTION (REBAR SPLICER) SHALL DEVELOP IN TENSION OR COMPRESSION AS REQUIRED AT LEAST 125% OF THE SPECIFIED YIELD STRENGTH f_y OF THE REBAR IF USED, SUBMIT SAMPLE FOR APPROVAL OF THE DESIGNER.

UNLESS SHOWN OTHERWISE ON PLANS, SPLICES, SHALL BE LOCATED AS FOLLOWS:

a.) INTERMEDIATE BEAMS, TOP BARS SHOULD BE SPLICED AT MIDSPAN AND BOTTOM BARS AT THE SUPPORT.

b.) BEAMS FRAMING TO COLUMNS: TOP AND BOTTOM BARS SHALL NOT BE SPLICED WITHIN THE COLUMN OR WITHIN A DISTANCE OF TWICE THE MEMBER DEPTH FROM THE FACE OF THE COLUMN. THE SPLICE LENGTH SHALL NOT BE LESS THAN 1.3 x THE DEVELOPMENT LENGTH (L_d).

c.) COLUMNS LAP SPLICES SHALL BE MADE WITHIN THE CENTER HALF OF COLUMN HEIGHT AND THE SPLICE BAR SPLICE SHALL BE 0.60 M. IF STAGGARD SPLICING IS USED.

d.) CMU WALLS: PROVIDE DOWELS ON R.C COLUMNS, BEAMS, FOOTINGS, AND FOOTINGS TIE- BEAMS TO MATCH CMU WALL REINFORCEMENT.

UNLESS INDICATED OTHERWISE ALL BEAMS TERMINATING AT COLUMN SHALL HAVE TOP & BOTTOM BARS EXTENDING TO THE FAR FACE OF THE COLUMN. TERMINATING IN A STANDARD 90 DEGREE HOOK OF ANCHORAGE SHALL NOT BE LESS THAN 0.60 M.

F. MASONRY

ALL MASONRY WALLS/CONCRETE HOLLOW BLOCKS SHALL BE LAID IN FLEMISH BOND (INTERLOCKING COURSE) WITH FULL MORTAR BEDDING. STACK BOND SHALL BE USED ONLY WHEN SPECIFIED. ALL CELLS SHALL BE FULLY FILLED WITH CONCRETE GROUT.

THE MINIMUM COMPRESSIVE STRENGTH OF CONCRETE HOLLOW BLOCK AT 28 DAYS SHALL BE 4.83 MPA (700 PSI) UNLESS OTHERWISE SPECIFIED.



6" CONCRETE HOLLOW BLOCKS WILL BE USED FOR THE EXTERIOR WALLS AND 4" FOR THE INTERIOR WALLS

G. FINISHING WORK

G.1 Plastering

THE PRIMARY REQUIREMENT OF PLASTERWORK SHALL BE TO PROVIDE ABSOLUTELY WATERTIGHT ENCLOSURE, DENSE, SMOOTH AND HARD AND DEVOID TO ANY CRACK ON THE INTERIOR AND/OR EXTERIOR. THAT CONTACTOR SHALL DO ALL THE NECCESASRY TO ENSURE THAT THESE OBJECTIVE IS ACHIEVED. ALL PLASTERING SHALL BE FINISHED TO TRUE PLANE, WITHOUT ANY IMPERFECTIONS AND SHALL BE SQUARE WITH ADJOINING WORK AND FORM PROPER FOUNDATION FOR FINISHING MATERIALS SUCH AS PAINT

MASONRY AND CONCRETE SURFACE WHICH CALL FOR THE APPLICATIONS OF PLASTER SHALL BE CLEAN, FREE FROM EFFLORESCENCE, DAMP AND SUFFICIENTLY ROUGH AND KEYED TO ENSURE PROPOER BOND, SUBJECT TO THE APPROVAL OF THE PROJECT CONSULTANTS

SELECT THE MASONRY UNITS FOR UNIFORM WIDTH AND DOUBLE-FACE QUALITIES IN SINGLE LEAF MASONRY WITH FACEWORK BOTH SIDES. BEFORE COMMENCEMENT, OBTAIN A RULING AS TO WHICH IS THE PREFERRED WALL FACE, AND FAVOUR THAT FACE SHOULD A COMPROMISE BE UNAVOIDABLE.

G.2 Painting

PAINTING WORKS SHALL BE AS INDICATED ON DRAWINGS AND DESCRIBED IN THE BILL OF QUANTITIES. INCLUDES SUBSTRATE PREPARATION, APPLICATION OF NEUTRALIZERS, PUTTY, SANDING, CLEANING, PROTECTION, ETC. TO PROVIDE A STRONG OR DURABLE PAINT COATING, FOLLOWING MANUFACTURER'S WRITTEN INSTRUCTIONS AND ACCEPTABLE TRADE PRACTICES.

PROVIDE MATERIALS THAT ARE SUITABLE FOR THE JOB AND OR TYPE OF CONSTRUCTION. PAINT MATERIALS SHALL BE OF THE BRAND SPECIFIED HEREIN OR APPROVED EQUAL BY THE ARCHITECT. EXAMINE SUBSTRATE AND CONDITIONS UNDER WHICH PAINTING WILL BE PERFORMED. PROCEED WITH THE WORK ONLY WHEN CONDITIONS ARE SATISFACTORY.

DO NOT PAINT OVER DIRT, RUST, SCALE, GREASE, MOISTURE, SCUFFED SURFACES, OR CONDITIONS OTHERWISE DETRIMENTAL TO FORMATION OF A DURABLE PAINT FILM. CLEAN SURFACES TO BE

PAINTED BEFORE APPLYING PAINT OR SURFACE TREATMENTS. REMOVE OIL AND GREASE PRIOR TO MECHANICAL CLEANING. PROGRAM CLEANING AND PAINTING SO THAT CONTAMINANTS FROM CLEANING PROCESS WILL NOT FALL INTO WET, NEWLY-PAINTED SURFACES.

PERFORM PREPARATION AND CLEANING PROCEDURES IN ACCORDANCE WITH PAINT MANUFACTURER'S INSTRUCTIONS AND AS HEREIN SPECIFIED, FOR EACH PARTICULAR SUBSTRATE CONDITION. FERROUS METALS: CLEAN NON-GALVANIZED FERROUS-METAL SURFACES THAT HAVE NOT BEEN SHOP COATED; REMOVE MORTAR, PLASTER, GREASE, DIRT, RUST, LOOSE MILL SCALE AND OTHER FOREIGN SUBSTANCES BY SOLVENT OR MECHANICAL CLEANING METHODS THAT COMPLY WITH THE RECOMMENDATIONS OF THE STEEL STRUCTURES PAINTING COUNCIL, BEFORE PRIMING COAT IS APPLIED.



H. CEILING WORKS

THE GRID LAYOUT IS TO BE SUPER IMPOSED ON THE CEILING SERVICE DUCTING/CABLING LAYOUT AND GOT APPROVED FROM THE PROJECT CONSULTANTS.

THE CEILING SHALL INCLUDE PROVIDING AND FIXING G.I PERIMETER CHANNELS SIZE OF 0.55MM THICK HAVING ONE FLANGE 20MM AND ANOTHER FLANGE OF 30MM AND WEB OF 27MM ALONG THE PERIMETER OF THE CEILING, SCREW FIXED TO BRICK WALL / PARTITION WITH HELP OF NYLON SLEEVES AND SCREWS, AT 600MM CENTER. THE SUSPENDED GI. INTERMEDIATE CHANNEL WITH SIZE 45MM, 0.9MM THICK WITH TWO FLANGES OF 15MM EACH FROM THE SOFFIT AT 1200 MM CENTERS WITH CEILING ANGLES OF WIDTH 25MM X 10MM X 0.55 THICK FIXED TO SOFFIT WITH GI CLEAT AND STEEL EXPANSION FASTENERS. SCREW FIXED TO CEILING SECTION WITH 25MM DRY WALL SCREWS AT 230MM CENTERS

SCREW FIXING DONE MECHANICALLY EITHER WITH SCREW DRIVER OR DRILLING MACHINE WITH SUITABLE ATTACHMENT

I. ROOF WORKS

KEEP THE ROOFING AND RAINWATER SYSTEM FREE OF DEBRIS AND LOSE MATERIAL DURING CONSTRUCTION, AND LEAVE THEM CLEAN AND UNOBSTRUCTED ON COMPLETION. REPAIR DAMAGE TO THE ROOFING AND RAINWATER SYSTEM.

FORMED FROM G550 STEEL (OR G300 FOR CURVING) WITH AN AM 125 FINISH CONFORMING TO AS 1397. MINIMUM 0.48 MM BMT. PROTECTION: PROTECT THE ROOF SHEETS FROM DAMAGE DURING HANDLING AND STORAGE AND PREVENT DAMAGE BY MOISTURE IN STACKED SHEETS. USE MATERIAL WITH THE SAME FINISH AND FROM THE SAME MANUFACTURER AS THE ROOFING SHEETS. THICKNESS: 0.55 MM BMT STEEL SHEET.

ROOFING SHALL BE .5MM RIBBED TYPE COLORBONDED GI ROOFING PANELS LAPPING AS INDICATED IN THE PRODUCT BROCHURE SHALL BE STRICTLY FOLLOWED ROOFING SHALL BE FASTENED PROPERLY TO THE PURLINS BY A 2-½ INCH TEX SCREW.

SELF-DRILLING SCREWS: TO AS 3566.1 AND AS 3566.2, COMPLETE WITH WASHERS AND EDPM BLACK, NONCONDUCTIVE SEALS. PROVIDE FASTENERS WHICH ARE PREFINISHED WITH AN OVEN BAKED POLYMER COATING TO MATCH THE ROOFING MATERIAL.

CHECK AND ADJUST THE ALIGNMENT OF THE ROOF STRUCTURE BEFORE FIXING ANY SHEETS.

BATTENS: 2 mm maximum mismatch at abutting ends.

ROOF PLANE: 5 mm per metre maximum deviation

ACROSS THE BATTENS FROM A PLANE PARALLEL TO THE SPECIFIED ROOF SLOPE.

FOR THE FASCIA COVER STRATCO 0.55 MM BMT PREPAINTED STEEL 210 MM OR 185 MM DEEP TO SUIT THE PARTICULAR APPLICATION. FIX TO RAFTER ENDS WITH PROPRIETARY FIXING CLIPS IN ACCORDANCE WITH MANUFACTURER'S INSTRUCTIONS. PROVIDE CORNER TRIMS, END TRIMS AND CAPPINGS AS REQUIRED.



J. TILE WORKS

ENSURE CONCRETE FLOOR AND SEALER ARE COMPATIBLE WITH ADHESIVE. IF AVAILABLE, PROVIDE PURPOSE-MADE BORDER TILES WITH THE EXPOSED EDGE (WHETHER ROUND, SQUARE OR CUSHION) GLAZED TO MATCH THE TILE FACE.

IF AVAILABLE, PROVIDE TILE ACCESSORIES SUCH AS ROUND EDGE CERAMIC TILES, COVE TILES, STEP TREADS AND NOSINGS TO STAIRS, LANDINGS, AND THRESHOLDS, SKIRTINGS, SILLS, COPINGS AND BATH VENTS, WHICH MATCH THE SURROUNDING TILES, COMPOSITION, COLOUR AND FINISH.

FINE AGGREGATE WITH A LOW CLAY CONTENT SELECTED FOR GRADING, SHARP AND FREE FROM EFFLORESCING SALTS. F

OR BEDDING MORTAR USE PROPORTIONING: SELECT PROPORTIONS FROM THE RANGE 1:3 TO 1:4 CEMENT: SAND BY VOLUME TO OBTAIN SATISFACTORY ADHESION. USE MINIMUM WATER.

FOR GROUTING CEMENT BASED PROPRIETARY GROUT: MIX WITH WATER. FINE SAND MAY BE ADDED AS A FILLER IN WIDER JOINTS. PORTLAND CEMENT BASED GROUT: MIX WITH FINE SAND. USE MINIMUM WATER CONSISTENT WITH WORKABILITY.

PROPORTIONING:

- For joints up to 3 mm: 1:2 cement: sand.
- For joints over 3 mm: 1:3 cement: sand.

K. ELECTRICAL WORK

ALL SWITCHES, ISOLATORS AND SOCKET OUTLETS IN NONDOMESTIC INSTALLATIONS TO HAVE CIRCUIT NUMBER AND PHASE IDENTIFICATION.

WIRING: CONCEAL CABLES AND CONDUITS, INCLUDING UNDERGROUND CABLE OR CONDUIT ENTERING THE BUILDING, IN A MANNER THAT WILL ALLOW WIRING REPLACEMENT WITHOUT STRUCTURAL WORK OR THE REMOVAL OF CLADDING OR LINING. DO NOT PENETRATE DAMP-PROOF COURSES.

ELECTRICAL ACCESSORIES: INSTALL FLUSH MOUNTED ACCESSORIES IN WALL BOXES, IF REQUIRED, IN MASONRY AND IN MOUNTING BRACKETS IN STUD WALLS.

FIXED APPLIANCES: PROVIDE CONNECTIONS WITH SOCKET OUTLET AND FLUSH BLANK PLATE FOR FIXED AND STATIONARY APPLIANCES. EARTH ALL SLAB FABRIC.

LIGHT SWITCHES AND FAN CONTROLLERS: GENERALLY, 1 M ABOVE FINISHED FLOOR LEVEL (AFL).

SOCKET OUTLETS: GENERALLY, 300 MM AFL OR 200 MM ABOVE BENCH SURFACE.

THE LIGHTINGS INSTALLED IN THE COMFORT ROOMS ARE ONE LED CEILING LIGHT WITH THE MINIMUM AMPERAGE OF 15A



L. PLUMBING WORK

EXCAVATE TO LOCATE AND EXPOSE THE CONNECTION POINTS AND CONNECT TO THE AUTHORITIES' MAINS. ON COMPLETION, BACKFILL AND COMPACT THE EXCAVATION AND REINSTATE SURFACES AND ELEMENTS WHICH HAVE BEEN DISTURBED SUCH AS ROADS, PAVEMENTS, KERBS, FOOTPATHS AND NATURE STRIPS.

FOR WATER SUPPLY LINES Copper pipe: To AS 1432, Type B.

JOINTING METHODS: Use capillary fittings, compression fittings, silver brazed slip joints or screwed joints.

GALVANIZED STEEL PIPE: To AS 1074, with screwed joints.

GENERALLY: Use copper pipes.

CORROSIVE WATER AREAS: Use Class 16 Polybutylene pipes, or Polyethylene equivalent, to AS/NZS 2642.2 and where exposed, use 316 stainless steel pipes including stainless steel

INSTALL PIPING IN STRAIGHT LINES AND TO UNIFORM GRADES. ARRANGE AND SUPPORT THE PIPING SO THAT IT REMAINS FREE FROM VIBRATION AND WATER HAMMER, WHILST PERMITTING THERMAL MOVEMENT. KEEP THE NUMBER OF JOINTS TO A MINIMUM. PREVENT DIRECT CONTACT BETWEEN INCOMPATIBLE METALS.

IF PRACTICABLE, CONCEAL PIPING AND FITTINGS REQUIRING MAINTENANCE OR SERVICING SO THAT THEY ARE ACCESSIBLE WITHIN NON-HABITABLE ENCLOSED SPACES SUCH AS ROOF SPACES, SUBFLOOR SPACES AND DUCTS. KEEP PIPELINE IN SUBFLOOR SPACES AT LEAST 150 MM ABOVE GROUND AND ENSURE ACCESS CAN BE PROVIDED THROUGHOUT FOR INSPECTION. PROVIDE AT LEAST 25 MM CLEARANCE BETWEEN ADJACENT PIPELINES (MEASURED FROM THE PIPING INSULATION WHERE APPLICABLE). EMBEDDED PIPES: DO NOT EMBED PIPES THAT OPERATE UNDER PRESSURE IN CONCRETE OR SURFACING MATERIAL. THE SAME AS THE PIPING, OR GALVANIZED OR NON-FERROUS METALS, WITH BONDED PVC OR GLASS FIBRE WOVEN TAPE SLEEVES WHERE NEEDED TO SEPARATE DISSIMILAR METALS.

THE ENTIRE WASTE WATER TREATMENT SYSTEM IS TO COMPLY WITH AS/NZS 1547 ON-SITE DOMESTIC WASTE WATER MANAGEMENT. A COMPREHENSIVE STUDY OF THE GROUND CONDITIONS IS TO BE COMPLETED.

PROVIDE THE ACCESSORIES AND FITTINGS NECESSARY FOR THE PROPER FUNCTIONING OF THE PLUMBING SYSTEMS, INCLUDING TAPS, VALVES, OUTLETS, PRESSURE AND TEMPERATURE CONTROL DEVICES, STRAINERS, GAUGES AND PUMPS

M. Doors, Windows and Fixtures

DOORS: DELIVER DOOR HARDWARE ITEMS, IN INDIVIDUAL COMPLETE SETS FOR EACH DOOR, AS FOLLOWS:

- Clearly labelled to show the intended location.
- In a separate dust and moisture proof package.
- Including the necessary templates, fixings and fixing instructions

PROVIDE 3-4 HINGES, ALUMINIUM HINGES: PROVIDE HIGH TENSILE ALUMINIUM HINGE, WITH FIXED STAINLESS-STEEL PINS IN NYLON BUSHES, AND WITH NYLON WASHERS TO EACH KNUCKLE JOINT.
DOORS FITTED WITH CLOSERS: USE LOW FRICTION BEARING HINGES.



West Visayas State University

JANIUAY CAMPUS

PLANNING AND DEVELOPMENT OFFICE

(Formerly Janiuay Polytechnic College, Don Tiburcio A. Lutero National Comp. High School, Janiuay Nat'l Comp. High School, Janiuay National Vocational High School, Janiuay High School)

Janiuay, Iloilo, Philippines

*Trunkline: (063) (033) 330-3485

* Website: www.wvsu.edu.ph *Email Address: fcordura@wvsu.edu.ph



PROVIDE MATERIALS COMPATIBLE WITH THE ITEM BEING FIXED, AND OF SUFFICIENT STRENGTH, SIZE AND QUALITY TO PERFORM THEIR FUNCTION.

FIX HINGES USING METAL THREAD SCREWS. INSTALL BUTT HINGES IN HOUSINGS EQUAL IN DEPTH TO THE THICKNESS OF THE HINGE LEAF (EXCEPT FOR HINGES DESIGNED FOR MOUNTING WITHOUT HOUSING), AND FIX WITH COUNTERSUNK SCREWS.

THE WINDOW AND DOOR FRAME SECTIONS SHOWN ON THE DRAWINGS ARE INDICATIVE ONLY TO SHOW THE REQUIRED RELATIONSHIPS BETWEEN OPENINGS AND ADJOINING SURFACES. PROVIDE SUB SEALS TO ALL WINDOWS. MAKE ACCURATELY FITTED TIGHT JOINTS SO THAT NEITHER FASTENERS NOR FIXING DEVICES SUCH AS PINS, SCREWS, ADHESIVES AND PRESSURE INDENTATIONS ARE VISIBLE ON EXPOSED SURFACES.

EACH CUBICLE WILL HAVE A ONE-PIECE WATER CLOSET, COUNTER TOP BASIN, UPVC DOOR SET, MIRROR, FAUCET AND A GLASS JALOUSIE 4- LEAVES WITH FRAME. THE QUALITY AND TYPE OF FIXTURES WILL BE PRESENTED TO THE OWNERS BEFORE INSTALLATION.

N. SEPTIC TANK

THE DESIGNER'S DRAWINGS SHALL SERVE AS BIDDING DRAWINGS FOR THE GENERAL LAYOUT OF THE VARIOUS ITEMS OF EQUIPMENT. HOWEVER, LAYOUT OF EQUIPMENT, ACCESSORIES, SPECIALTIES, DUCTWORK AND PIPING ARE DIAGRAMMATIC, UNLESS SPECIFICALLY, DIMENSIONED, AND DO NOT NECESSARILY INDICATE EVERY REQUIRED FITTING, TRAP, ELBOW, TRANSITION, OR SIMILAR ITEMS REQUIRED FOR CONSTRUCTION OF THE WORK AND A COMPLETE INSTALLATION.

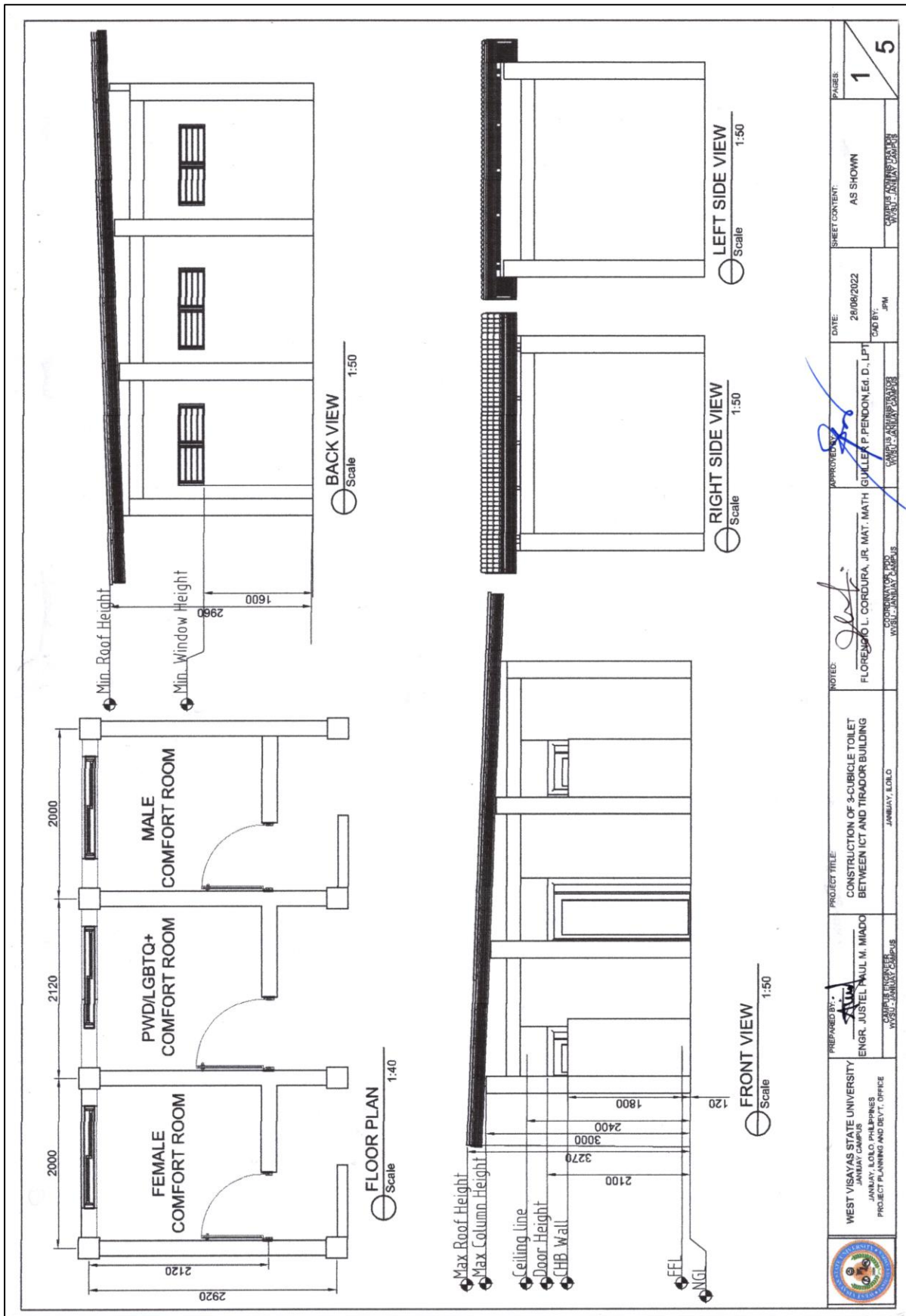
USE ONLY PRECAST CONCRETE OR GLASS FIBRE REINFORCED PLASTIC SEPTIC TANKS: TO AS/NZS 1546.1. EFFLUENT DISPOSAL: TO AS/NZS 1547 AND THE REQUIREMENTS OF THE ENVIRONMENTAL HEALTH BRANCH OF THE DEPARTMENT OF HEALTH.


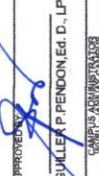
Prepared by:

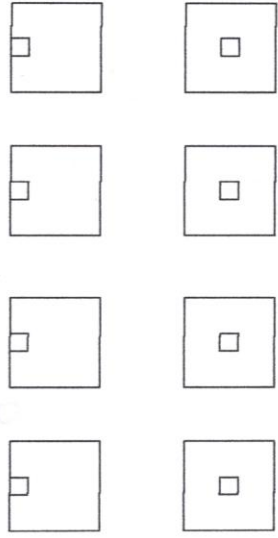
ENGR. JUSTEL PAUL M MIADO

Campus Engineer

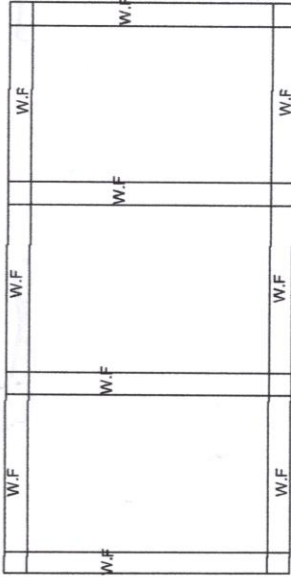
Section VII. Drawings



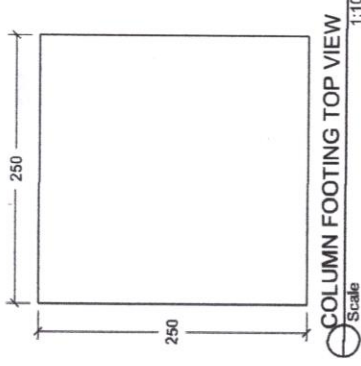
	WEST VISAYAS STATE UNIVERSITY JANUARY CAMPUS PROJECT PLANNING AND DEV'T. OFFICE	PREPARED BY: ALAN ENGR. JUSTEL PAUL M. MIADO	PROJECT TITLE: CONSTRUCTION OF 3-CUBICLE TOILET BETWEEN ICT AND THRASOR BUILDING	NOTED: FLORENZO L. CORDURA, JR., MAT. MATH. GUILLET P. PENDON, Ed. D., LPT	APPROVED BY: 	DATE: 28/08/2022	SHEET CONTENT: AS SHOWN	PAGES 1 / 5
	JANUARY CAMPUS PROJECT PLANNING AND DEV'T. OFFICE	JANUARY CAMPUS PROJECT PLANNING AND DEV'T. OFFICE	JANUARY CAMPUS PROJECT PLANNING AND DEV'T. OFFICE	JANUARY CAMPUS PROJECT PLANNING AND DEV'T. OFFICE	JANUARY CAMPUS PROJECT PLANNING AND DEV'T. OFFICE	JANUARY CAMPUS PROJECT PLANNING AND DEV'T. OFFICE	JANUARY CAMPUS PROJECT PLANNING AND DEV'T. OFFICE	JANUARY CAMPUS PROJECT PLANNING AND DEV'T. OFFICE



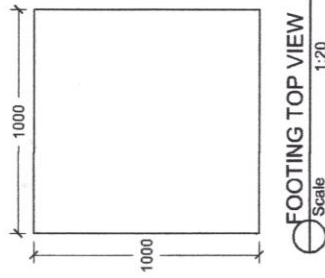
FOOTING PLACEMENT
Scale 1:50



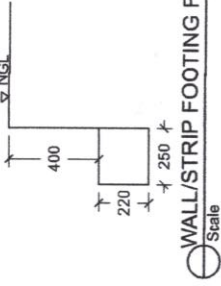
WALL/STRIP FOOTING PLACEMENT
Scale 1:40



COLUMN FOOTING TOP VIEW
Scale 1:10

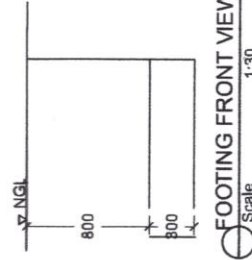


FOOTING TOP VIEW
Scale 1:20

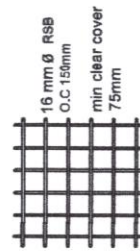


WALL/STRIP FOOTING FRONT VIEW
Scale 1:20

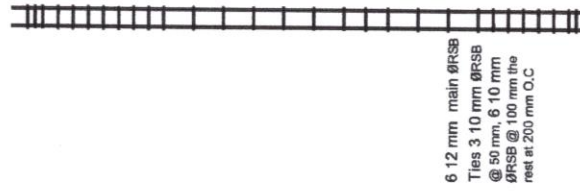
3 12 mm \varnothing RSB
Bottom bar
10 mm \varnothing RSB Stirrups
O.C 300 mm



FOOTING FRONT VIEW
Scale 1:30




RSB FOOTING
Scale 1:30

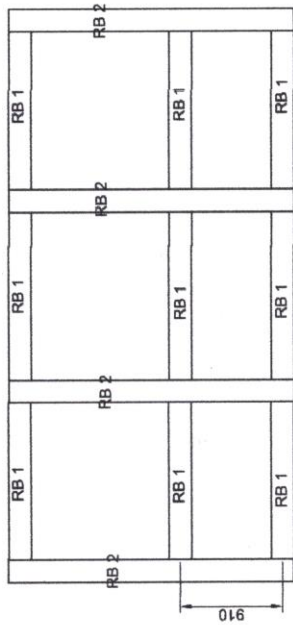


COLUMN RSB DETAIL
Scale 1:10

6 12 mm main \varnothing RSB
Ties 3 10 mm \varnothing RSB
@ 50 mm, 6 10 mm
 \varnothing RSB @ 100 mm the
rest at 200 mm O.C

NOTE:
Footing depth as per site will prevail if agreed upon by the Engineer/ Architect in charge

 <p>WEST VISAYAS STATE UNIVERSITY JANUARY CAMPUS PROJECT PLANNING AND DEV'T. OFFICE</p>	<p>PREPARED BY: <i>ADD</i> ENGR. JUSTIEL PAUL M. MENDO</p>	<p>PROJECT TITLE: CONSTRUCTION OF 3-CURCLE TOILET BETWEEN ICT AND TIRODOR BUILDING</p>	<p>NOTED: <i>ADD</i> FLORBERIC O. CORDUÑA, JR. MAT. MATH</p>	<p>APPROVED BY: <i>ADD</i> GUILLEMO P. FENDON (EG. D., LPT)</p>	<p>DATE: 28/08/2022</p>	<p>SHEET CONTENT: AS SHOWN</p>	<p>PAGES: 2</p>
	<p>ENGR. JUSTIEL PAUL M. MENDO WEST VISAYAS STATE UNIVERSITY</p>	<p>ENGR. GUILLEMO P. FENDON (EG. D., LPT) WEST VISAYAS STATE UNIVERSITY</p>	<p>DATE: 28/08/2022</p>	<p>DATE: 28/08/2022</p>	<p>DATE: 28/08/2022</p>	<p>DATE: 28/08/2022</p>	<p>DATE: 28/08/2022</p>



Roof Beam Placement
Scale 1:40

4 12 mm top bars ØRSB
2 12 mm bottom bars ØRSB
STIRRUP: 4 10mm ØRSB @ 50mm, 2 10mm ØRSB @ 100mm the rest at 200mm O.C



Roof Beam 1 RSB Detail
Scale 1:10

	Support	Mid Span
Top bars	4 12 mm ØRSB	2 12 mm ØRSB
Bottom bars	2 12 mm ØRSB	4 12 mm ØRSB

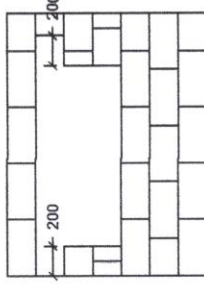
STIRRUP: 4 10mm ØRSB @ 50mm, 4 10mm ØRSB @ 100mm the rest at 200mm O.C



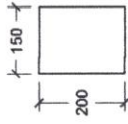
Roof Beam 2 RSB Detail
Scale 1:15



Roof Beam Front View
Scale 1:40



Preparation for Lintel Beams
Scale 1:30



Lintel Beam Front View
Scale 1:10



Lintel Beam RSB Detail
Scale 1:10



Lintel Beam RSB Front View
Scale 1:5



WEST VISAYAS STATE UNIVERSITY
JANUARY, LOILO PHILIPPINES
PROJECT PLANNING AND DEV'T. OFFICE

PREPARED BY: **ABU**
ENGR. JUSTEL PAUL M. MIMDO
WEST VISAYAS STATE UNIVERSITY
JANUARY, LOILO PHILIPPINES

PROJECT TITLE:
CONSTRUCTION OF 3-CUBICLE TOILET
BETWEEN ICT AND TIRADOR BUILDING

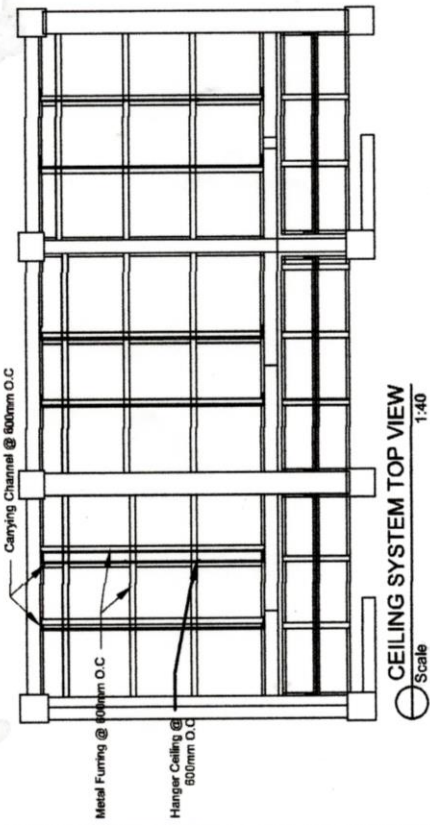
NOTED: *[Signature]*
FLORENCE L. CORDERA, JR. MAT. MATH
CORPORATE ARCHITECTS
WEST VISAYAS STATE UNIVERSITY
JANUARY, LOILO PHILIPPINES

APPROVED BY: *[Signature]*
GUILLET P. PENON, Ed. D., LPT
CORPORATE ARCHITECTS
WEST VISAYAS STATE UNIVERSITY
JANUARY, LOILO PHILIPPINES

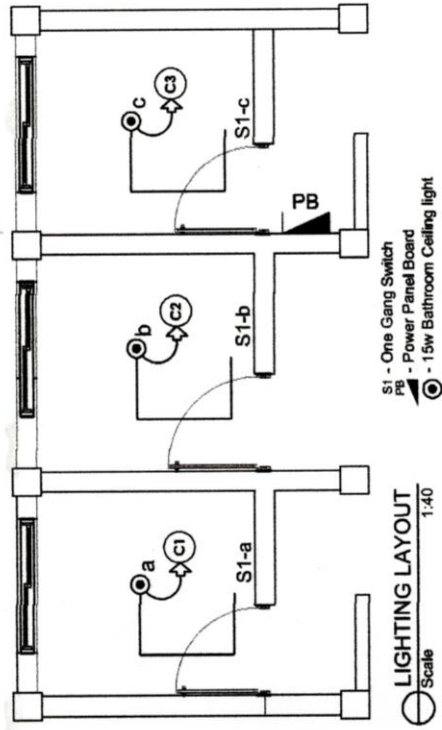
DATE: 28/08/2022
DRAWN BY: JPM

SHEET CONTENT: AS SHOWN

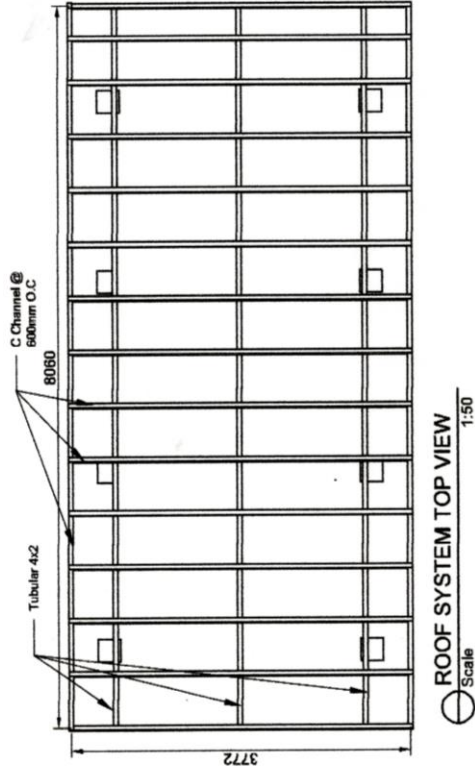
PAGE: 3 / 5



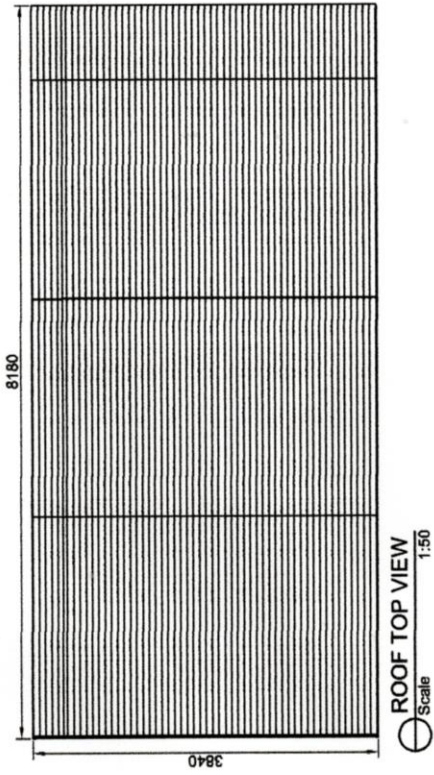
CEILING SYSTEM TOP VIEW
Scale 1:40







LIGHTING LAYOUT
Scale 1:40



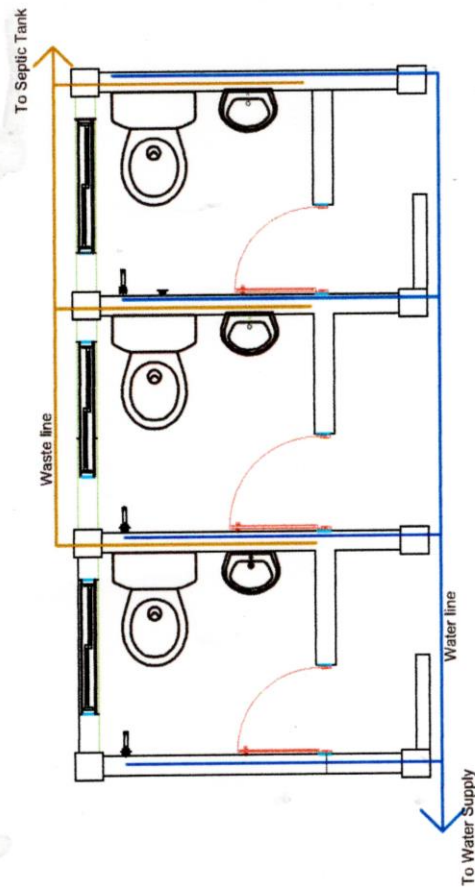
ROOF SYSTEM TOP VIEW
Scale 1:50



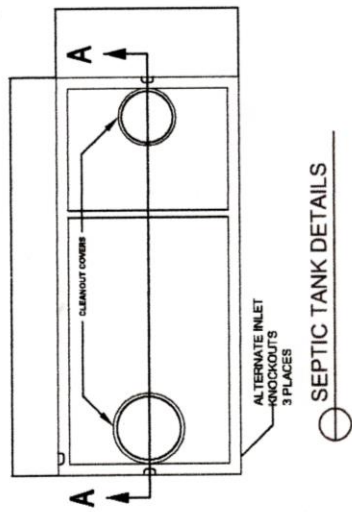
ROOF TOP VIEW
Scale 1:50

	WEST VISAYAS STATE UNIVERSITY JANUARY CAMPUS PROJECT PLANNING AND DEV'T. OFFICE	PREPARED BY:  ENGR. JUSTEL PAUL M. MIRADO JANUARY CAMPUS PROJECT PLANNING AND DEV'T. OFFICE	PROJECT TITLE: CONSTRUCTION OF 3-CUBICLE TOILET BETWEEN ICT AND TIRADOR BUILDING JANUARY, L.O.L.D.	NOTED:  FLORENCIO L. CORDURA, JR. MAT. MATH. GUYLLERMO FERNONDEZ D. LPT JANUARY CAMPUS	APPROVED BY:  FLORENCIO L. CORDURA, JR. MAT. MATH. GUYLLERMO FERNONDEZ D. LPT JANUARY CAMPUS	DATE: 28/08/2022	SHEET CONTENT: AS SHOWN	PAIR: 4 / 5
	WEST VISAYAS STATE UNIVERSITY JANUARY CAMPUS							

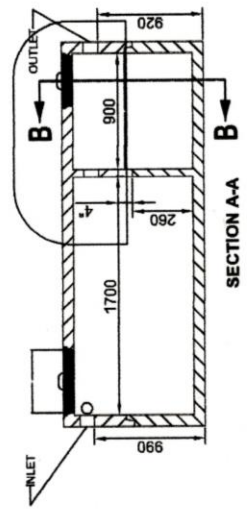
NOTE:
 Septic tank design as per site will prevail if agreed upon by the Engineer/ Architect in charge
 Plumbing layout as per site will prevail if agreed upon by the Engineer/ Architect in charge




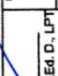


PLUMBING LAYOUT
 Scale 1:40



SEPTIC TANK DETAILS



	WEST VISAYAS STATE UNIVERSITY JANUARY CAMPUS PROJECT PLANNING AND DEVT. OFFICE	PREPARED BY:  ENGR. JUSTEL PAUL M. MARDO REGISTERED PROFESSIONAL ENGINEER WEST VISAYAS STATE UNIVERSITY	PROJECT TITLE: CONSTRUCTION OF 3-CUBICLE TOILET BETWEEN ICT AND TRADER BUILDING JANUARY, LORO	NOTED:  FLORENCIO CORDURA, JR. MAT. MATH. ENGINEER REGISTERED PROFESSIONAL ENGINEER WEST VISAYAS STATE UNIVERSITY	APPROVED BY:  CARLOS JANILAY REGISTERED PROFESSIONAL ENGINEER WEST VISAYAS STATE UNIVERSITY	DATE: 28/08/2022 DRAWN BY: JPM	SHEET CONTENT: AS SHOWN	PAGES: 5 / 5
---	--	--	--	--	--	---	----------------------------	-----------------

Section VIII. Bill of Quantities

Project Title : Construction of 3-Cubicle Toilet between ICT and Tirador Building

Location : WVSU-Janiuay Campus, Locsin St., Janiuay, Iloilo

ITEM	DESCRIPTION	UNIT	QTY	UNIT COST	TOTAL AMOUNT
I	GENERAL REQUIREMENTS				
1.A	Mobilization and Demobilization	lot	1		
1.B	Demolition	lot	1		
II	EARTHWORKS				
II.A	Excavation	sq.m	19.64		
II.B	Backfill	sq.m	9.33		
III	CONCRETE WORKS				
III.A	Wall Footing and Isolated Footing	cu.m	2.4		
III.B	Column	cu.m	1.85		
III.C	Roof beam & Lintel beam	cu.m	1.12		
III.D	Slab	cu.m	1.98		
IV	REINFORCED STEEL BAR				
IV.A	Wall Footing & Isolated Footing	kg	185.42		
IV.B	Column	kg	384.36		
IV.C	Beam	kg	396.46		
IV.D	Slab	kg	174.88		
IV.E	CHB	kg	158.24		
V	MASONRY WORK				
V.A	CHB	sq.m	56.56		
VI	FINISHING WORK				
VI.A	Plastering	sq.m	101		
VI.B	Painting works	sq.m	132		
VII	CEILING WORK	lot	1		
VIII	ROOFWORKS	sq.m	31.406		
IX	TILEWORKS	sq.m	45		
X	ELECTRICAL WORK	lot	1		
XI	PLUMBING WORK	lot	1		
XII	DOORS, WINDOWS AND FIXTURES	lot	1		
XIII	SEPTIC TANK	lot	1		
	TOTAL				

**Please see attached Detailed Unit Price Analysis (DUPA)*

Submitted by:

Name of the Representative of Bidder

Position

Name of Bidder

Date



PROGRAM OF WORKS
PDO No. 2022-04

Name of Project : **Construction of 3-Cubicle Toilet between ICT and Tirador Building**
 Location : WVSU-Janiuay Campus
 Locsin Street, Janiuay, Iloilo

Appropriation : **₱831,478.08**

Classification : **By Contract**

Calendar Days : **50**

Project Description									
The structure is designed for the Male, Female and PWD/LGBTQ+. The floor area of the structure is 19.72 sq. meter. The septic vault is constructed with water tight concrete.									
MINIMUM EQUIPMENT REQUIREMENTS					TECHNICAL PERSONNEL REQUIRED				
DESCRIPTION		No	DESCRIPTION		No				
Bagger concrete mixer		1	Site Engineer		1				
Power tools		1	Construction Foreman		1				
Concrete vibrator		1	Skilled Worker		1				
Electric cut-off		1	Laborer		2				
ESTIMATED COST OF PROPOSED WORK									
ITEM	DESCRIPTION	%TOTAL	UNIT	QTY	DIRECT COST		TOTAL COST		
					UNIT COST	TOTAL	UNIT COST	TOTAL	
I GENERAL REQUIREMENTS									
1.A	Mobilization and Demobilization	0.77%	lot	1					
1.B	Demolition	0.95%	lot	1					
II EARTHWORKS									
II.A	Excavation	0.95%	sq.m	19.64					
II.B	Backfill	0.95%	sq.m	9.33					
III CONCRETE WORKS									
III.A	Wall Footing and Isolated Footing	5.35%	cu.m	2.4					
III.B	Column	2.37%	cu.m	1.85					
III.C	Roof beam & Lintel beam	1.84%	cu.m	1.12					
III.D	Slab	2.45%	cu.m	1.98					
IV REINFORCED STEEL BAR									
IV.A	Wall Footing & Isolated Footing	2.92%	kg	185.42					
IV.B	Column	5.02%	kg	384.36					
IV.C	Beam	5.13%	kg	396.46					
IV.D	Slab	2.80%	kg	174.88					
IV.E	CHB	2.63%	kg	158.24					
V MASONRY WORK									
V.A	CHB	7.94%	sq.m	56.56					
VI FINISHING WORK									
VI.A	Plastering	13.07%	sq.m	101					
VI.B	Painting works	6.42%	sq.m	132					
VII	CEILING WORK	4.08%	lot	1					
VIII	ROOFWORKS	7.38%	sq.m.	31.406					
IX	TILEWORKS	6.56%	sq.m	45					
X	ELECTRICAL WORK	2.69%	lot	1					
XI	PLUMBING WORK	4.11%	lot	1					
XII	DOORS, WINDOWS AND FIXTURES	8.71%	lot	1					
XIII	SEPTIC TANK	4.91%	lot	1					
TOTAL									

BREAKDOWN EXPENDITURE

1. Labor _____
2. Rental Equipment _____
3. Materials _____
4. Provisional Sum _____
5. Direct Cost _____
6. OCM _____
7. Profit _____
8. Vat (5%) _____
9. ROW Acquisition _____

- A. Sub Total _____
 - B. PDE/Project Supervision/ Administrative Cost
0.5% of Total Estimated Cost _____
 - C. Price Escalation (12%) _____
- TOTAL ESTIMATED COST _____

Prepared by:

 ENGR. JUSTEL PAUL MIADO
 Campus Engineer

Recommending Approval:

 FLORENCIO L. CORDURA Jr., MAT. MATH
 Coordinator, Planning & Devt. Office

DETAILED UNIT PRICE ANALYSIS (DUPA)

PROJECT NAME: Construction of 3-Cubicle Toilet between ICT and Tirador Building
 PART I: General Requirements
 ITEM NO.: I.A
 DESCRIPTION: Mobilization and Demobilization
 UNIT OF MEASUREMENT: lot
 OUTPUT PER DAY:
 QUANTITY: 1 lot

DESIGNATION	NO. OF PERSONS	NO. OF DAYS	DAILY RATE	AMOUNT
A. LABOR				
a. Site Engineer				
b. Construction Foreman				
c. Skilled Worker				
d. Laborer				
Sub-Total for A			PhP	
NAME & CAPACITY	NO. OF UNIT/S	NO. OF DAYS	DAILY RATE	AMOUNT
B. EQUIPMENT				
a. Minor Tools (10% of Labor)				
Sub-Total for B			PhP	
C. TOTAL (A+B)				
D. OUTPUT PER DAY				
NAME AND SPECIFICATION				
E. MATERIALS	QUANTITY	UNIT	UNIT COST	AMOUNT (PhP)
Sub-Total for E			PhP	
F. DIRECT UNIT COST (C+E)				
G. OVERHEAD, CONTIGENCIES & MISCELLANEOUS (OCM) EXPENSES				
H. CONTRACTORS PROFIT (CP)				
I. VALUE ADDED TAX (VAT)			5%	
J. TOTAL UNIT COST			PhP	

DETAILED UNIT PRICE ANALYSIS (DUPA)

PROJECT NAME: Construction of 3-Cubicle Toilet between ICT and Tirador Building

PART I: General Requirements

ITEM NO.: I.B

DESCRIPTION: Demolition

UNIT OF MEASUREMENT: lot

OUTPUT PER DAY:

QUANTITY: 1 lot

DESIGNATION	NO. OF PERSONS	NO. OF DAYS	DAILY RATE	AMOUNT
A. LABOR				
a. Site Engineer				
b. Construction Foreman				
c. Skilled Worker				
d. Laborer				
Sub-Total for A			PhP	
NAME & CAPACITY	NO. OF UNIT/S	NO. OF DAYS	DAILY RATE	AMOUNT
B. EQUIPMENT				
a. Minor Tools (10% of Labor)				
Sub-Total for B			PhP	
C. TOTAL (A+B)				
D. OUTPUT PER DAY				
NAME AND SPECIFICATION				
E. MATERIALS	QUANTITY	UNIT	UNIT COST	AMOUNT (PhP)
Sub-Total for E			PhP	
F. DIRECT UNIT COST (C+E)				
G. OVERHEAD, CONTIGENCIES & MISCELLANEOUS (OCM) EXPENSES			15%	
H. CONTRACTORS PROFIT (CP)			10%	
I. VALUE ADDED TAX (VAT)			5%	
J. TOTAL UNIT COST			PhP	

DETAILED UNIT PRICE ANALYSIS (DUPA)

PROJECT NAME: Construction of 3-Cubicle Toilet between ICT and Tirador Building

PART II: Earthworks

ITEM NO.: II.A

DESCRIPTION: Excavation

UNIT OF MEASUREMENT: cu.m.

OUTPUT PER DAY:

QUANTITY: 19.64 cu.m.

DESIGNATION		NO. OF PERSONS	NO. OF DAYS	DAILY RATE	AMOUNT
A.	LABOR				
	a. Site Engineer				
	b. Construction Foreman				
	c. Skilled Worker				
	d. Laborer				
Sub-Total for A				PhP	
	NAME & CAPACITY	NO. OF UNIT/S	NO. OF DAYS	DAILY RATE	AMOUNT
B.	EQUIPMENT				
	a. Minor Tools (10% of Labor)				
Sub-Total for B				PhP	
C.	TOTAL (A+B)				
D.	OUTPUT PER DAY				
	NAME AND SPECIFICATION				
E.	MATERIALS	QUANTITY	UNIT	UNIT COST	AMOUNT (PhP)
Sub-Total for E				PhP	
F.	DIRECT UNIT COST (C+E)				
G.	OVERHEAD, CONTIGENCIES & MISCELLANEOUS (OCM) EXPENSES				15%
H.	CONTRACTORS PROFIT (CP)				10%
I.	VALUE ADDED TAX (VAT)				5%
J.	TOTAL UNIT COST				PhP

DETAILED UNIT PRICE ANALYSIS (DUPA)

PROJECT NAME: Construction of 3-Cubicle Toilet between ICT and Tirador Building
PART II: Earthworks
ITEM NO.: II.B
DESCRIPTION: Backfilling
UNIT OF MEASUREMENT: cu.m.
OUTPUT PER DAY:
QUANTITY: 9.33 cu.m.

DESIGNATION		NO. OF PERSONS	NO. OF DAYS	DAILY RATE	AMOUNT
A. LABOR					
	a. Site Engineer				
	b. Construction Foreman				
	c. Skilled Worker				
	d. Laborer				
Sub-Total for A				PhP	
	NAME & CAPACITY	NO. OF UNIT/S	NO. OF DAYS	DAILY RATE	AMOUNT
B. EQUIPMENT					
	a. Minor Tools (10% of Labor)				
Sub-Total for B				PhP	
C. TOTAL (A+B)					
D. OUTPUT PER DAY					
	NAME AND SPECIFICATION				
E. MATERIALS		QUANTITY	UNIT	UNIT COST	AMOUNT (PhP)
Sub-Total for E				PhP	
F. DIRECT UNIT COST (C+E)					
G. OVERHEAD, CONTIGENCIES & MISCELLANEOUS (OCM) EXPENSES					15%
H. CONTRACTORS PROFIT (CP)					10%
I. VALUE ADDED TAX (VAT)					5%
J. TOTAL UNIT COST					PhP

DETAILED UNIT PRICE ANALYSIS (DUPA)

PROJECT NAME: Construction of 3-Cubicle Toilet between ICT and Tirador Building
 PART III: Concrete works
 ITEM NO.: III.A
 DESCRIPTION: Wall Footing & Isolated Footing
 UNIT OF MEASUREMENT: cu.m.
 OUTPUT PER DAY:
 QUANTITY: 2.4 cu.m.

DESIGNATION		NO. OF PERSONS	NO. OF DAYS	DAILY RATE	AMOUNT
A. LABOR					
	a. Site Engineer				
	b. Construction Foreman				
	c. Skilled Worker				
	d. Laborer				
Sub-Total for A					PhP
	NAME & CAPACITY	NO. OF UNIT/S	NO. OF DAYS	DAILY RATE	AMOUNT
B. EQUIPMENT					
	a. Minor Tools (10% of Labor)				
Sub-Total for B					PhP
C. TOTAL (A+B)					
D. OUTPUT PER DAY					
	NAME AND SPECIFICATION				
E. MATERIALS		QUANTITY	UNIT	UNIT COST	AMOUNT (PhP)
Sub-Total for E					PhP
F. DIRECT UNIT COST (C+E)					
G. OVERHEAD, CONTIGENCIES & MISCELLANEOUS (OCM) EXPENS					15%
H. CONTRACTORS PROFIT (CP)					10%
I. VALUE ADDED TAX (VAT)					5%
J. TOTAL UNIT COST					PhP

DETAILED UNIT PRICE ANALYSIS (DUPA)

PROJECT NAME: Construction of 3-Cubicle Toilet between ICT and Tirador Building

PART III: Concrete works

ITEM NO.: III.B

DESCRIPTION: Column

UNIT OF MEASUREMENT: cu.m.

OUTPUT PER DAY:

QUANTITY: 1.85 cu.m.

	DESIGNATION	NO. OF PERSONS	NO. OF DAYS	DAILY RATE	AMOUNT
A.	LABOR				
	a. Site Engineer				
	b. Construction Foreman				
	c. Skilled Worker				
	d. Laborer				
	Sub-Total for A			PhP	
	NAME & CAPACITY	NO. OF UNIT/S	NO. OF DAYS	DAILY RATE	AMOUNT
B.	EQUIPMENT				
	a. Minor Tools (10% of Labor)				
	Sub-Total for B			PhP	
C.	TOTAL (A+B)				
D.	OUTPUT PER DAY				
	NAME AND SPECIFICATION				
E.	MATERIALS	QUANTITY	UNIT	UNIT COST	AMOUNT (PhP)
	Sub-Total for E			PhP	
F.	DIRECT UNIT COST (C+E)				
G.	OVERHEAD, CONTIGENCIES & MISCELLANEOUS (OCM) EXPENSES			15%	
H.	CONTRACTORS PROFIT (CP)			10%	
I.	VALUE ADDED TAX (VAT)			5%	
J.	TOTAL UNIT COST			PhP	

DETAILED UNIT PRICE ANALYSIS (DUPA)

PROJECT NAME: Construction of 3-Cubicle Toilet between ICT and Tirador Building
PART III: Concrete works
ITEM NO.: III.C
DESCRIPTION: Roof beam & Lintel beam
UNIT OF MEASUREMENT: cu.m.
OUTPUT PER DAY:
QUANTITY: 1.12 cu.m.

DESIGNATION		NO. OF PERSONS	NO. OF DAYS	DAILY RATE	AMOUNT
A. LABOR					
	a. Site Engineer				
	b. Construction Foreman				
	c. Skilled Worker				
	d. Laborer				
Sub-Total for A				PhP	
	NAME & CAPACITY	NO. OF UNIT/S	NO. OF DAYS	DAILY RATE	AMOUNT
B. EQUIPMENT					
	a. Minor Tools (10% of Labor)				
Sub-Total for B				PhP	
C. TOTAL (A+B)					
D. OUTPUT PER DAY					
	NAME AND SPECIFICATION				
E. MATERIALS		QUANTITY	UNIT	UNIT COST	AMOUNT (PhP)
Sub-Total for E				PhP	
F. DIRECT UNIT COST (C+E)					
G. OVERHEAD, CONTIGENCIES & MISCELLANEOUS (OCM) EXPENS				15%	
H. CONTRACTORS PROFIT (CP)				10%	
I. VALUE ADDED TAX (VAT)				5%	
J. TOTAL UNIT COST				PhP	

DETAILED UNIT PRICE ANALYSIS (DUPA)

PROJECT NAME: Construction of 3-Cubicle Toilet between ICT and Tirador Building
PART III: Concrete works
ITEM NO.: III.D
DESCRIPTION: Slab
UNIT OF MEASUREMENT: cu.m.
OUTPUT PER DAY:
QUANTITY: 1.98 cu.m.

DESIGNATION	NO. OF PERSONS	NO. OF DAYS	DAILY RATE	AMOUNT
A. LABOR				
a. Site Engineer				
b. Construction Foreman				
c. Skilled Worker				
d. Laborer				
Sub-Total for A			PhP	
NAME & CAPACITY	NO. OF UNIT/S	NO. OF DAYS	DAILY RATE	AMOUNT
B. EQUIPMENT				
a. Minor Tools (10% of Labor)				
Sub-Total for B			PhP	
C. TOTAL (A+B)				
D. OUTPUT PER DAY				
NAME AND SPECIFICATION				
E. MATERIALS	QUANTITY	UNIT	UNIT COST	AMOUNT (PhP)
Sub-Total for E			PhP	
F. DIRECT UNIT COST (C+E)				
G. OVERHEAD, CONTIGENCIES & MISCELLANEOUS (OCM) EXPENS			15%	
H. CONTRACTORS PROFIT (CP)			10%	
I. VALUE ADDED TAX (VAT)			5%	
J. TOTAL UNIT COST			PhP	

DETAILED UNIT PRICE ANALYSIS (DUPA)

PROJECT NAME: Construction of 3-Cubicle Toilet between ICT and Tirador Building
PART IV: Reinforced Steel Bars
ITEM NO.: IV.A
DESCRIPTION: Wall Footing & Isolated Footing
UNIT OF MEASUREMENT: kg
OUTPUT PER DAY:
QUANTITY: 185.42 kg

DESIGNATION		NO. OF PERSONS	NO. OF DAYS	DAILY RATE	AMOUNT
A. LABOR					
	a. Site Engineer				
	b. Construction Foreman				
	c. Skilled Worker				
	d. Laborer				
Sub-Total for A				PhP	
	NAME & CAPACITY	NO. OF UNIT/S	NO. OF DAYS	DAILY RATE	AMOUNT
B. EQUIPMENT					
	a. Minor Tools (10% of Labor)				
Sub-Total for B				PhP	
C. TOTAL (A+B)					
D. OUTPUT PER DAY					
	NAME AND SPECIFICATION				
E. MATERIALS		QUANTITY	UNIT	UNIT COST	AMOUNT (PhP)
Sub-Total for E				PhP	
F. DIRECT UNIT COST (C+E)					
G. OVERHEAD, CONTIGENCIES & MISCELLANEOUS (OCM) EXPENSES					15%
H. CONTRACTORS PROFIT (CP)					10%
I. VALUE ADDED TAX (VAT)					5%
J. TOTAL UNIT COST					PhP

DETAILED UNIT PRICE ANALYSIS (DUPA)

PROJECT NAME: Construction of 3-Cubicle Toilet between ICT and Tirador Building
 PART IV: Reinforced Steel Bars
 ITEM NO.: IV.B
 DESCRIPTION: Column
 UNIT OF MEASUREMENT: kg
 OUTPUT PER DAY:
 QUANTITY: 384.36 kg

DESIGNATION	NO. OF PERSONS	NO. OF DAYS	DAILY RATE	AMOUNT
A. LABOR				
a. Site Engineer				
b. Construction Foreman				
c. Skilled Worker				
d. Laborer				
Sub-Total for A			PhP	
NAME & CAPACITY	NO. OF UNIT/S	NO. OF DAYS	DAILY RATE	AMOUNT
B. EQUIPMENT				
a. Minor Tools (10% of Labor)				
Sub-Total for B			PhP	
C. TOTAL (A+B)				
D. OUTPUT PER DAY				
NAME AND SPECIFICATION				
E. MATERIALS	QUANTITY	UNIT	UNIT COST	AMOUNT (PhP)
Sub-Total for E			PhP	
F. DIRECT UNIT COST (C+E)				
G. OVERHEAD, CONTIGENCIES & MISCELLANEOUS (OCM) EXPENSES			15%	
H. CONTRACTORS PROFIT (CP)			10%	
I. VALUE ADDED TAX (VAT)			5%	
J. TOTAL UNIT COST			PhP	

DETAILED UNIT PRICE ANALYSIS (DUPA)

PROJECT NAME: Construction of 3-Cubicle Toilet between ICT and Tirador Building
 PART IV: Reinforced Steel Bars
 ITEM NO.: IV.C
 DESCRIPTION: Beam
 UNIT OF MEASUREMENT: kg
 OUTPUT PER DAY:
 QUANTITY: 396.46 kg

DESIGNATION		NO. OF PERSONS	NO. OF DAYS	DAILY RATE	AMOUNT
A. LABOR					
	a. Site Engineer				
	b. Construction Foreman				
	c. Skilled Worker				
	d. Laborer				
Sub-Total for A				PhP	
	NAME & CAPACITY	NO. OF UNIT/S	NO. OF DAYS	DAILY RATE	AMOUNT
B. EQUIPMENT					
	a. Minor Tools (10% of Labor)				
Sub-Total for B				PhP	
C. TOTAL (A+B)					
D. OUTPUT PER DAY					
	NAME AND SPECIFICATION				
E. MATERIALS		QUANTITY	UNIT	UNIT COST	AMOUNT (PhP)
Sub-Total for E				PhP	
F. DIRECT UNIT COST (C+E)					
G. OVERHEAD, CONTIGENCIES & MISCELLANEOUS (OCM) EXPENSES					15%
H. CONTRACTORS PROFIT (CP)					10%
I. VALUE ADDED TAX (VAT)					5%
J. TOTAL UNIT COST					PhP

DETAILED UNIT PRICE ANALYSIS (DUPA)

PROJECT NAME: Construction of 3-Cubicle Toilet between ICT and Tirador Building
PART IV: Reinforced Steel Bars
ITEM NO.: IV.D
DESCRIPTION: Slab
UNIT OF MEASUREMENT: kg
OUTPUT PER DAY:
QUANTITY: 174.88 kg

DESIGNATION		NO. OF PERSONS	NO. OF DAYS	DAILY RATE	AMOUNT
A. LABOR					
a. Site Engineer					
b. Construction Foreman					
c. Skilled Worker					
d. Laborer					
Sub-Total for A				PhP	
NAME & CAPACITY		NO. OF UNIT/S	NO. OF DAYS	DAILY RATE	AMOUNT
B. EQUIPMENT					
a. Minor Tools (10% of Labor)					
Sub-Total for B				PhP	
C. TOTAL (A+B)					
D. OUTPUT PER DAY					
NAME AND SPECIFICATION					
E. MATERIALS					
		QUANTITY	UNIT	UNIT COST	AMOUNT (PhP)
Sub-Total for E				PhP	
F. DIRECT UNIT COST (C+E)					
G. OVERHEAD, CONTIGENCIES & MISCELLANEOUS (OCM) EXPENSES				15%	
H. CONTRACTORS PROFIT (CP)				10%	
I. VALUE ADDED TAX (VAT)				5%	
J. TOTAL UNIT COST				PhP	

DETAILED UNIT PRICE ANALYSIS (DUPA)

PROJECT NAME: Construction of 3-Cubicle Toilet between ICT and Tirador Building
PART IV: Reinforced Steel Bars
ITEM NO.: IV.E
DESCRIPTION: CHB
UNIT OF MEASUREMENT: kg
OUTPUT PER DAY:
QUANTITY: 158.24 kg

DESIGNATION	NO. OF PERSONS	NO. OF DAYS	DAILY RATE	AMOUNT
A. LABOR				
a. Site Engineer				
b. Construction Foreman				
c. Skilled Worker				
d. Laborer				
Sub-Total for A			PhP	
NAME & CAPACITY	NO. OF UNIT/S	NO. OF DAYS	DAILY RATE	AMOUNT
B. EQUIPMENT				
a. Minor Tools (10% of Labor)				
Sub-Total for B			PhP	
C. TOTAL (A+B)				
D. OUTPUT PER DAY				
NAME AND SPECIFICATION				
E. MATERIALS	QUANTITY	UNIT	UNIT COST	AMOUNT (PhP)
Sub-Total for E			PhP	
F. DIRECT UNIT COST (C+E)				
G. OVERHEAD, CONTIGENCIES & MISCELLANEOUS (OCM) EXPENSES			15%	
H. CONTRACTORS PROFIT (CP)			10%	
I. VALUE ADDED TAX (VAT)			5%	
J. TOTAL UNIT COST			PhP	

DETAILED UNIT PRICE ANALYSIS (DUPA)

PROJECT NAME: Construction of 3-Cubicle Toilet between ICT and Tirador Building
 PART V: Masonry Work
 ITEM NO.: V.A
 DESCRIPTION: CHB
 UNIT OF MEASUREMENT: sq.m.
 OUTPUT PER DAY:
 QUANTITY: 56.56 sq.m.

DESIGNATION		NO. OF PERSONS	NO. OF DAYS	DAILY RATE	AMOUNT
A. LABOR					
	a. Site Engineer				
	b. Construction Foreman				
	c. Skilled Worker				
	d. Laborer				
Sub-Total for A				PhP	
	NAME & CAPACITY	NO. OF UNIT/S	NO. OF DAYS	DAILY RATE	AMOUNT
B. EQUIPMENT					
	a. Minor Tools (10% of Labor)				
Sub-Total for B				PhP	
C. TOTAL (A+B)					
D. OUTPUT PER DAY					
	NAME AND SPECIFICATION				
E. MATERIALS		QUANTITY	UNIT	UNIT COST	AMOUNT (PhP)
Sub-Total for E				PhP	
F. DIRECT UNIT COST (C+E)					
G. OVERHEAD, CONTIGENCIES & MISCELLANEOUS (OCM) EXPENSES				15%	
H. CONTRACTORS PROFIT (CP)				10%	
I. VALUE ADDED TAX (VAT)				5%	
J. TOTAL UNIT COST				PhP	

DETAILED UNIT PRICE ANALYSIS (DUPA)

PROJECT NAME: Construction of 3-Cubicle Toilet between ICT and Tirador Building
PART VI: Finishing Work
ITEM NO.: VI.A
DESCRIPTION: Plastering
UNIT OF MEASUREMENT: sq.m.
OUTPUT PER DAY:
QUANTITY: 101 sq.m.

DESIGNATION		NO. OF PERSONS	NO. OF DAYS	DAILY RATE	AMOUNT
A. LABOR					
	a. Site Engineer				
	b. Construction Foreman				
	c. Skilled Worker				
	d. Laborer				
Sub-Total for A				PhP	
	NAME & CAPACITY	NO. OF UNIT/S	NO. OF DAYS	DAILY RATE	AMOUNT
B. EQUIPMENT					
	a. Minor Tools (10% of Labor)				
Sub-Total for B				PhP	
C. TOTAL (A+B)					
D. OUTPUT PER DAY					
NAME AND SPECIFICATION					
E. MATERIALS		QUANTITY	UNIT	UNIT COST	AMOUNT (PhP)
Sub-Total for E					
F. DIRECT UNIT COST (C+E)					
G. OVERHEAD, CONTIGENCIES & MISCELLANEOUS (OCM) EXPENSES				15%	
H. CONTRACTORS PROFIT (CP)				10%	
I. VALUE ADDED TAX (VAT)				5%	
J. TOTAL UNIT COST				PhP	

DETAILED UNIT PRICE ANALYSIS (DUPA)

PROJECT NAME: Construction of 3-Cubicle Toilet between ICT and Tirador Building
PART VI: Finishing Work
ITEM NO.: VI.B
DESCRIPTION: Painting Works
UNIT OF MEASUREMENT: sq.m.
OUTPUT PER DAY:
QUANTITY: 132 sq.m.

DESIGNATION	NO. OF PERSONS	NO. OF DAYS	DAILY RATE	AMOUNT
A. LABOR				
a. Site Engineer				
b. Construction Foreman				
c. Skilled Worker				
d. Laborer				
Sub-Total for A			PhP	
NAME & CAPACITY	NO. OF UNIT/S	NO. OF DAYS	DAILY RATE	AMOUNT
B. EQUIPMENT				
a. Minor Tools (10% of Labor)				
Sub-Total for B			PhP	
C. TOTAL (A+B)				
D. OUTPUT PER DAY				
NAME AND SPECIFICATION				
E. MATERIALS	QUANTITY	UNIT	UNIT COST	AMOUNT (PhP)
Sub-Total for E			PhP	
F. DIRECT UNIT COST (C+E)				
G. OVERHEAD, CONTIGENCIES & MISCELLANEOUS (OCM) EXPENSES			15%	
H. CONTRACTORS PROFIT (CP)			10%	
I. VALUE ADDED TAX (VAT)			5%	
J. TOTAL UNIT COST			PhP	

DETAILED UNIT PRICE ANALYSIS (DUPA)

PROJECT NAME: Construction of 3-Cubicle Toilet between ICT and Tirador Building
 PART VII: Ceiling Work
 ITEM NO.: VII.A
 DESCRIPTION: Ceiling Work
 UNIT OF MEASUREMENT: lot
 OUTPUT PER DAY:
 QUANTITY: 1 lot

DESIGNATION		NO. OF PERSONS	NO. OF DAYS	DAILY RATE	AMOUNT
A. LABOR					
	a. Site Engineer				
	b. Construction Foreman				
	c. Skilled Worker				
	d. Laborer				
Sub-Total for A					PhP
	NAME & CAPACITY	NO. OF UNIT/S	NO. OF DAYS	DAILY RATE	AMOUNT
B. EQUIPMENT					
	a. Minor Tools (10% of Labor)				
Sub-Total for B					PhP
C. TOTAL (A+B)					
D. OUTPUT PER DAY					
NAME AND SPECIFICATION					
E. MATERIALS		QUANTITY	UNIT	UNIT COST	AMOUNT (PhP)
Sub-Total for E					PhP
F. DIRECT UNIT COST (C+E)					
G. OVERHEAD, CONTIGENCIES & MISCELLANEOUS (OCM) EXPENSES				15%	
H. CONTRACTORS PROFIT (CP)				10%	
I. VALUE ADDED TAX (VAT)				5%	
J. TOTAL UNIT COST					PhP

DETAILED UNIT PRICE ANALYSIS (DUPA)

PROJECT NAME: Construction of 3-Cubicle Toilet between ICT and Tirador Building
 PART VIII: Roofing
 ITEM NO.: VIII.A
 DESCRIPTION: Roofing
 UNIT OF MEASUREMENT: sq.m
 OUTPUT PER DAY:
 QUANTITY: 31.406 sq.m.

DESIGNATION	NO. OF PERSONS	NO. OF DAYS	DAILY RATE	AMOUNT
A. LABOR				
a. Site Engineer				
b. Construction Foreman				
c. Skilled Worker				
d. Laborer				
Sub-Total for A			PhP	
NAME & CAPACITY	NO. OF UNIT/S	NO. OF DAYS	DAILY RATE	AMOUNT
B. EQUIPMENT				
a. Minor Tools (10% of Labor)				
Sub-Total for B			PhP	
C. TOTAL (A+B)				
D. OUTPUT PER DAY				
NAME AND SPECIFICATION				
E. MATERIALS	QUANTITY	UNIT	UNIT COST	AMOUNT (PhP)
Sub-Total for E			PhP	
F. DIRECT UNIT COST (C+E)				
G. OVERHEAD, CONTIGENCIES & MISCELLANEOUS (OCM) EXPENSES			15%	
H. CONTRACTORS PROFIT (CP)			10%	
I. VALUE ADDED TAX (VAT)			5%	
J. TOTAL UNIT COST			PhP	

DETAILED UNIT PRICE ANALYSIS (DUPA)

PROJECT NAME: Construction of 3-Cubicle Toilet between ICT and Tirador Building
 PART XI: Tileworks
 ITEM NO.: IX.A
 DESCRIPTION: Tileworks
 UNIT OF MEASUREMEN' sq.m
 OUTPUT PER DAY:
 QUANTITY: 45 sq.m.

DESIGNATION	NO. OF PERSONS	NO. OF DAYS	DAILY RATE	AMOUNT
A. LABOR				
a. Site Engineer				
b. Construction Foreman				
c. Skilled Worker				
d. Laborer				
Sub-Total for A			PhP	
NAME & CAPACITY	NO. OF UNIT/S	NO. OF DAYS	DAILY RATE	AMOUNT
B. EQUIPMENT				
a. Minor Tools (10% of Labor)				
Sub-Total for B			PhP	
C. TOTAL (A+B)				
D. OUTPUT PER DAY				
NAME AND SPECIFICATION				
E. MATERIALS	QUANTITY	UNIT	UNIT COST	AMOUNT (PhP)
Sub-Total for E			PhP	
F. DIRECT UNIT COST (C+E)				
G. OVERHEAD, CONTIGENCIES & MISCELLANEOUS (OCM) EXPENSES			15%	
H. CONTRACTORS PROFIT (CP)			10%	
I. VALUE ADDED TAX (VAT)			5%	
J. TOTAL UNIT COST			PhP	

DETAILED UNIT PRICE ANALYSIS (DUPA)

PROJECT NAME: Construction of 3-Cubicle Toilet between ICT and Tirador Building
PART X: Electrical Works
ITEM NO.: X.A
DESCRIPTION: Electrical Works
UNIT OF MEASURE: lot
OUTPUT PER DAY:
QUANTITY: 1 lot

DESIGNATION	NO. OF PERSONS	NO. OF DAYS	DAILY RATE	AMOUNT	
A. LABOR					
a. Site Engineer					
b. Construction Foreman					
c. Skilled Worker					
d. Laborer					
Sub-Total for A			PhP		
NAME & CAPACITY		NO. OF UNIT/S	NO. OF DAYS	DAILY RATE	AMOUNT
B. EQUIPMENT					
a. Minor Tools (10% of Labor)					
Sub-Total for B			PhP		
C. TOTAL (A+B)					
D. OUTPUT PER DAY					
NAME AND SPECIFICATION					
E. MATERIALS	QUANTITY	UNIT	UNIT COST	AMOUNT (PhP)	
Sub-Total for E			PhP		
F. DIRECT UNIT COST (C+E)					
G. OVERHEAD, CONTIGENCIES & MISCELLANEOUS (OCM) EXPENSES			15%		
H. CONTRACTORS PROFIT (CP)			10%		
I. VALUE ADDED TAX (VAT)			5%		
J. TOTAL UNIT COST			PhP		

DETAILED UNIT PRICE ANALYSIS (DUPA)

PROJECT NAME: Construction of 3-Cubicle Toilet between ICT and Tirador Building
 PART XI: Plumbing Works
 ITEM NO.: XI.A
 DESCRIPTION: Plumbing Works
 UNIT OF MEASUREMENT: lot
 OUTPUT PER DAY:
 QUANTITY: 1 lot

DESIGNATION	NO. OF PERSONS	NO. OF DAYS	DAILY RATE	AMOUNT
A. LABOR				
a. Site Engineer				
b. Construction Foreman				
c. Skilled Worker				
d. Laborer				
Sub-Total for A			PhP	
NAME & CAPACITY	NO. OF UNIT/S	NO. OF DAYS	DAILY RATE	AMOUNT
B. EQUIPMENT				
a. Minor Tools (10% of Labor)				
Sub-Total for B			PhP	
C. TOTAL (A+B)				
D. OUTPUT PER DAY				
NAME AND SPECIFICATION				
E. MATERIALS	QUANTITY	UNIT	UNIT COST	AMOUNT (PhP)
Sub-Total for E			PhP	
F. DIRECT UNIT COST (C+E)				
G. OVERHEAD, CONTIGENCIES & MISCELLANEOUS (OCM) EXPENSES			15%	
H. CONTRACTORS PROFIT (CP)			10%	
I. VALUE ADDED TAX (VAT)			5%	
J. TOTAL UNIT COST			PhP	

DETAILED UNIT PRICE ANALYSIS (DUPA)

PROJECT NAME: Construction of 3-Cubicle Toilet between ICT and Tirador Building
 PART XII: Doors, Windows and Fixtures
 ITEM NO.: XII.A
 DESCRIPTION: Doors, Windows and Fixtures
 UNIT OF MEASURE: lot
 OUTPUT PER DAY:
 QUANTITY: 1 lot

DESIGNATION	NO. OF PERSONS	NO. OF DAYS	DAILY RATE	AMOUNT
A. LABOR				
a. Site Engineer				
b. Construction Foreman				
c. Skilled Worker				
d. Laborer				
Sub-Total for A			PhP	
NAME & CAPACITY	NO. OF UNIT/S	NO. OF DAYS	DAILY RATE	AMOUNT
B. EQUIPMENT				
a. Minor Tools (10% of Labor)				
Sub-Total for B			PhP	
C. TOTAL (A+B)				
D. OUTPUT PER DAY				
NAME AND SPECIFICATION				
E. MATERIALS	QUANTITY	UNIT	UNIT COST	AMOUNT (PhP)
Sub-Total for E			PhP	
F. DIRECT UNIT COST (C+E)				
G. OVERHEAD, CONTIGENCIES & MISCELLANEOUS (OCM) EXPENSES			15%	
H. CONTRACTORS PROFIT (CP)			10%	
I. VALUE ADDED TAX (VAT)			5%	
J. TOTAL UNIT COST			PhP	

DETAILED UNIT PRICE ANALYSIS (DUPA)

PROJECT NAME: Construction of 3-Cubicle Toilet between ICT and Tirador Building
PART XIII: Septic Tank
ITEM NO.: XIII.A
DESCRIPTION: Septic Tank
UNIT OF MEASURE: lot
OUTPUT PER DAY:
QUANTITY: 1 lot

DESIGNATION		NO. OF PERSONS	NO. OF DAYS	DAILY RATE	AMOUNT
A. LABOR					
	a. Site Engineer				
	b. Construction Foreman				
	c. Skilled Worker				
	d. Laborer				
Sub-Total for A				PhP	
	NAME & CAPACITY	NO. OF UNIT/S	NO. OF DAYS	DAILY RATE	AMOUNT
B. EQUIPMENT					
	a. Minor Tools (10% of Labor)				
Sub-Total for B				PhP	
C. TOTAL (A+B)					
D. OUTPUT PER DAY					
	NAME AND SPECIFICATION				
E. MATERIALS		QUANTITY	UNIT	UNIT COST	AMOUNT (PhP)
F.	Sub-Total for E			PhP	
G.	DIRECT UNIT COST (C+E)				
H.	OVERHEAD, CONTIGENCIES & MISCELLANEOUS (OCM) EXPENSES			15%	
I.	CONTRACTORS PROFIT (CP)			10%	
J.	VALUE ADDED TAX (VAT)			5%	
	TOTAL UNIT COST			PhP	

Section IX. Checklist of Technical and Financial Documents

I. TECHNICAL COMPONENT ENVELOPE

Class "A" Documents

Legal Documents

- (a) Valid PhilGEPS Registration Certificate (Platinum Membership) (all pages);
or
- (b) Registration certificate from Securities and Exchange Commission (SEC), Department of Trade and Industry (DTI) for sole proprietorship, or Cooperative Development Authority (CDA) for cooperatives or its equivalent document;
and
- (c) Mayor's or Business permit issued by the city or municipality where the principal place of business of the prospective bidder is located, or the equivalent document for Exclusive Economic Zones or Areas;
and
- (e) Tax clearance per E.O. No. 398, s. 2005, as finally reviewed and approved by the Bureau of Internal Revenue (BIR).

Technical Documents

- (f) Statement of the prospective bidder of all its ongoing government and private contracts, including contracts awarded but not yet started, if any, whether similar or not similar in nature and complexity to the contract to be bid; **and**
- (g) Statement of the bidder's Single Largest Completed Contract (SLCC) similar to the contract to be bid, except under conditions provided under the rules; **and**
- (h) Philippine Contractors Accreditation Board (PCAB) License; **or** Special PCAB License in case of Joint Ventures;
and registration for the type and cost of the contract to be bid; **and**
- (i) Original copy of Bid Security. If in the form of a Surety Bond, submit also a certification issued by the Insurance Commission; **or** Original copy of Notarized Bid Securing Declaration; **and**
- (j) Project Requirements, which shall include the following:
 - a. Organizational chart for the contract to be bid;
 - b. List of contractor's key personnel (*e.g.*, Project Manager, Project Engineers, Materials Engineers, and Foremen), to be assigned to the contract to be bid, with their complete qualification and experience data;
 - c. List of contractor's major equipment units, which are owned, leased, and/or under purchase agreements, supported by proof of ownership or certification of availability of equipment from the equipment lessor/vendor for the duration of the project, as the case may be; **and**
- (k) Original duly signed Omnibus Sworn Statement (OSS);
and if applicable, Original Notarized Secretary's Certificate in case of a corporation, partnership, or cooperative; or Original Special Power of Attorney of all members of the joint venture giving full power and authority to its officer to sign the OSS and do acts to represent the Bidder.

Financial Documents

- (l) The prospective bidder's audited financial statements, showing, among others, the prospective bidder's total and current assets and liabilities, stamped "received" by the BIR or its duly accredited and authorized institutions, for the preceding calendar year which should not be earlier than two (2) years from the date of bid submission; **and**
- (m) The prospective bidder's computation of Net Financial Contracting Capacity (NFCC).

Class "B" Documents

- (n) If applicable, duly signed joint venture agreement (JVA) in accordance with RA No. 4566 and its IRR in case the joint venture is already in existence; **or** duly notarized statements from all the potential joint venture partners stating that they will enter into and abide by the provisions of the JVA in the instance that the bid is successful.

II. FINANCIAL COMPONENT ENVELOPE

- (o) Original of duly signed and accomplished Financial Bid Form; **and**

Other documentary requirements under RA No. 9184

- (p) Original of duly signed Bid Prices in the Bill of Quantities; **and**
- (q) Duly accomplished Detailed Estimates Form, including a summary sheet indicating the unit prices of construction materials, labor rates, and equipment rentals used in coming up with the Bid; **and**
- (r) Cash Flow by Quarter.

Bid Form for the Procurement of Infrastructure Projects

[shall be submitted with the Bid]

BID FORM

Date : _____

Project Identification No. : _____

To: *[name and address of Procuring Entity]*

Having examined the Philippine Bidding Documents (PBDs) including the Supplemental or Bid Bulletin Numbers *[insert numbers]*, the receipt of which is hereby duly acknowledged, we, the undersigned, declare that:

- a. We have no reservation to the PBDs, including the Supplemental or Bid Bulletins, for the Procurement Project: *[insert name of contract]*;
- b. We offer to execute the Works for this Contract in accordance with the PBDs;
- c. The total price of our Bid in words and figures, excluding any discounts offered below is: *[insert information]*;
- d. The discounts offered and the methodology for their application are: *[insert information]*;
- e. The total bid price includes the cost of all taxes, such as, but not limited to: *[specify the applicable taxes, e.g. (i) value added tax (VAT), (ii) income tax, (iii) local taxes, and (iv) other fiscal levies and duties]*, which are itemized herein and reflected in the detailed estimates,
- f. Our Bid shall be valid within the a period stated in the PBDs, and it shall remain binding upon us at any time before the expiration of that period;
- g. If our Bid is accepted, we commit to obtain a Performance Security in the amount of *[insert percentage amount]* percent of the Contract Price for the due performance of the Contract, or a Performance Securing Declaration in lieu of the the allowable forms of Performance Security, subject to the terms and conditions of issued GPPB guidelines² for this purpose;
- h. We are not participating, as Bidders, in more than one Bid in this bidding process, other than alternative offers in accordance with the Bidding Documents;
- i. We understand that this Bid, together with your written acceptance thereof included in your notification of award, shall constitute a binding contract between us, until a formal Contract is prepared and executed; and
- j. We understand that you are not bound to accept the Lowest Calculated Bid or any other Bid that you may receive.
- k. We likewise certify/confirm that the undersigned, is the duly authorized representative of the bidder, and granted full power and authority to do, execute and perform any and all acts necessary to participate, submit the bid, and to sign and execute the ensuing contract for the [Name of Project] of the [Name of the Procuring Entity].
- l. We acknowledge that failure to sign each and every page of this Bid Form, including the Bill of Quantities, shall be a ground for the rejection of our bid.

Name: _____

Legal Capacity: _____

Signature: _____

Duly authorized to sign the Bid for and behalf of: _____

Date: _____

² currently based on GPPB Resolution No. 09-2020

