

PHILIPPINE BIDDING DOCUMENTS

**Procurement of
INFRASTRUCTURE
PROJECTS**

Government of the Republic of the Philippines

Construction of WVSU-Lambunao Campus Garage/Motorpool

Php 2,254,500.62

**Sixth Edition
July 2020**

Preface

These Philippine Bidding Documents (PBDs) for the procurement of Infrastructure Projects (hereinafter referred to also as the “Works”) through Competitive Bidding have been prepared by the Government of the Philippines for use by all branches, agencies, departments, bureaus, offices, or instrumentalities of the government, including government-owned and/or -controlled corporations, government financial institutions, state universities and colleges, local government units, and autonomous regional government. The procedures and practices presented in this document have been developed through broad experience, and are for mandatory use in projects that are financed in whole or in part by the Government of the Philippines or any foreign government/foreign or international financing institution in accordance with the provisions of the 2016 revised Implementing Rules and Regulations (IRR) of Republic Act (RA) No. 9184.

The PBDs are intended as a model for admeasurements (unit prices or unit rates in a bill of quantities) types of contract, which are the most common in Works contracting.

The Bidding Documents shall clearly and adequately define, among others: (i) the objectives, scope, and expected outputs and/or results of the proposed contract; (ii) the eligibility requirements of Bidders; (iii) the expected contract duration; and (iv) the obligations, duties, and/or functions of the winning Bidder.

Care should be taken to check the relevance of the provisions of the PBDs against the requirements of the specific Works to be procured. If duplication of a subject is inevitable in other sections of the document prepared by the Procuring Entity, care must be exercised to avoid contradictions between clauses dealing with the same matter.

Moreover, each section is prepared with notes intended only as information for the Procuring Entity or the person drafting the Bidding Documents. They shall not be included in the final documents. The following general directions should be observed when using the documents:

- a. All the documents listed in the Table of Contents are normally required for the procurement of Infrastructure Projects. However, they should be adapted as necessary to the circumstances of the particular Project.
- b. Specific details, such as the “*name of the Procuring Entity*” and “*address for bid submission*,” should be furnished in the Instructions to Bidders, Bid Data Sheet, and Special Conditions of Contract. The final documents should contain neither blank spaces nor options.
- c. This Preface and the footnotes or notes in italics included in the Invitation to Bid, BDS, General Conditions of Contract, Special Conditions of Contract, Specifications, Drawings, and Bill of Quantities are not part of the text of the final document, although they contain instructions that the Procuring Entity should strictly follow.
- d. The cover should be modified as required to identify the Bidding Documents as to the names of the Project, Contract, and Procuring Entity, in addition to date of issue.

- e. Modifications for specific Procurement Project details should be provided in the Special Conditions of Contract as amendments to the Conditions of Contract. For easy completion, whenever reference has to be made to specific clauses in the Bid Data Sheet or Special Conditions of Contract, these terms shall be printed in bold typeface on Sections I (Instructions to Bidders) and III (General Conditions of Contract), respectively.
- f. For guidelines on the use of Bidding Forms and the procurement of Foreign-Assisted Projects, these will be covered by a separate issuance of the Government Procurement Policy Board.

TABLE OF CONTENTS

Glossary of Terms, Abbreviations, and Acronyms	5
Section I. Invitation to Bid	8
Section II. Instructions to Bidders	11
1. Scope of Bid	12
2. Funding Information	12
3. Bidding Requirements	12
4. Corrupt, Fraudulent, Collusive, Coercive, and Obstructive Practices	13
5. Eligible Bidders	13
6. Origin of Associated Goods	13
7. Subcontracts	13
8. Pre-Bid Conference	14
9. Clarification and Amendment of Bidding Documents	14
10. Documents Comprising the Bid: Eligibility and Technical Components	14
11. Documents Comprising the Bid: Financial Component	15
12. Alternative Bids	15
13. Bid Prices	15
14. Bid and Payment Currencies	16
15. Bid Security	16
16. Sealing and Marking of Bids	16
17. Deadline for Submission of Bids	16
18. Opening and Preliminary Examination of Bids	17
19. Detailed Evaluation and Comparison of Bids	17
20. Post Qualification	17
21. Signing of the Contract	17
Section III. Bid Data Sheet	18
Section IV. General Conditions of Contract	20
1. Scope of Contract	21
2. Sectional Completion of Works	21
3. Possession of Site	21
4. The Contractor's Obligations	21
5. Performance Security	22
6. Site Investigation Reports	22

7. Warranty	22
8. Liability of the Contractor	22
9. Termination for Other Causes	22
10. Dayworks	23
11. Program of Work	23
12. Instructions, Inspections and Audits	23
13. Advance Payment	23
14. Progress Payments	23
15. Operating and Maintenance Manuals	24
Section V. Special Conditions of Contract	25
Section VI. Specifications	27
Section VII. Drawings	28
Section VIII. Bill of Quantities	61
Section IX. Checklist of Technical and Financial Documents	65

Glossary of Terms, Abbreviations, and Acronyms

ABC – Approved Budget for the Contract.

ARCC – Allowable Range of Contract Cost.

BAC – Bids and Awards Committee.

Bid – A signed offer or proposal to undertake a contract submitted by a bidder in response to and in consonance with the requirements of the bidding documents. Also referred to as *Proposal* and *Tender*. (2016 revised IRR, Section 5[c])

Bidder – Refers to a contractor, manufacturer, supplier, distributor and/or consultant who submits a bid in response to the requirements of the Bidding Documents. (2016 revised IRR, Section 5[d])

Bidding Documents – The documents issued by the Procuring Entity as the bases for bids, furnishing all information necessary for a prospective bidder to prepare a bid for the Goods, Infrastructure Projects, and/or Consulting Services required by the Procuring Entity. (2016 revised IRR, Section 5[e])

BIR – Bureau of Internal Revenue.

BSP – Bangko Sentral ng Pilipinas.

CDA – Cooperative Development Authority.

Consulting Services – Refer to services for Infrastructure Projects and other types of projects or activities of the GOP requiring adequate external technical and professional expertise that are beyond the capability and/or capacity of the GOP to undertake such as, but not limited to: (i) advisory and review services; (ii) pre-investment or feasibility studies; (iii) design; (iv) construction supervision; (v) management and related services; and (vi) other technical services or special studies. (2016 revised IRR, Section 5[i])

Contract – Refers to the agreement entered into between the Procuring Entity and the Supplier or Manufacturer or Distributor or Service Provider for procurement of Goods and Services; Contractor for Procurement of Infrastructure Projects; or Consultant or Consulting Firm for Procurement of Consulting Services; as the case may be, as recorded in the Contract Form signed by the parties, including all attachments and appendices thereto and all documents incorporated by reference therein.

Contractor – is a natural or juridical entity whose proposal was accepted by the Procuring Entity and to whom the Contract to execute the Work was awarded. Contractor as used in these Bidding Documents may likewise refer to a supplier, distributor, manufacturer, or consultant.

CPI – Consumer Price Index.

DOLE – Department of Labor and Employment.

DTI – Department of Trade and Industry.

Foreign-funded Procurement or Foreign-Assisted Project – Refers to procurement whose funding source is from a foreign government, foreign or international financing institution as specified in the Treaty or International or Executive Agreement. (2016 revised IRR, Section 5[b]).

GFI – Government Financial Institution.

GOCC – Government-owned and/or –controlled corporation.

Goods – Refer to all items, supplies, materials and general support services, except Consulting Services and Infrastructure Projects, which may be needed in the transaction of public businesses or in the pursuit of any government undertaking, project or activity, whether in the nature of equipment, furniture, stationery, materials for construction, or personal property of any kind, including non-personal or contractual services such as the repair and maintenance of equipment and furniture, as well as trucking, hauling, janitorial, security, and related or analogous services, as well as procurement of materials and supplies provided by the Procuring Entity for such services. The term “related” or “analogous services” shall include, but is not limited to, lease or purchase of office space, media advertisements, health maintenance services, and other services essential to the operation of the Procuring Entity. (2016 revised IRR, Section 5[r])

GOP – Government of the Philippines.

Infrastructure Projects – Include the construction, improvement, rehabilitation, demolition, repair, restoration or maintenance of roads and bridges, railways, airports, seaports, communication facilities, civil works components of information technology projects, irrigation, flood control and drainage, water supply, sanitation, sewerage and solid waste management systems, shore protection, energy/power and electrification facilities, national buildings, school buildings, hospital buildings, and other related construction projects of the government. Also referred to as *civil works or works*. (2016 revised IRR, Section 5[u])

LGUs – Local Government Units.

NFCC – Net Financial Contracting Capacity.

NGA – National Government Agency.

PCAB – Philippine Contractors Accreditation Board.

PhilGEPS - Philippine Government Electronic Procurement System.

Procurement Project – refers to a specific or identified procurement covering goods, infrastructure project or consulting services. A Procurement Project shall be described, detailed, and scheduled in the Project Procurement Management Plan prepared by the agency which shall be consolidated in the procuring entity's Annual Procurement Plan. (GPPB Circular No. 06-2019 dated 17 July 2019)

PSA – Philippine Statistics Authority.

SEC – Securities and Exchange Commission.

SLCC – Single Largest Completed Contract.

UN – United Nations.

Section I. Invitation to Bid



West Visayas State University
LAMBUNAO CAMPUS
Procurement Office

Ladrido Street, Poblacion Ilawod,
Lambunao, Iloilo, Philippines 5042



*Trunkline: (033) 533-8053 loc 101-133

*Telefax No.: (033) 533-8053

*Website: www.wvsu.edu.ph

* Email Address: lambunao@wvsu.edu.ph

Invitation to Bid No. IB2022-11

CONSTRUCTION OF WVSU-LAMBUNAO CAMPUS GARAGE/MOTORPOOL

ABC = Php 2,254,500.62

1. The **West Visayas State University-Lambunao Campus**, through its **Income (F164 2020)** intends to apply the sum of **TWO MILLION TWO HUNDRED FIFTY-FOUR THOUSAND FIVE HUNDRED PESOS & 62/100 ONLY (Php 2,254,500.62)** payments under the contract for **Construction of WVSU-Lambunao Campus Motorpool/Garage** Bids received in excess of the ABC shall be automatically rejected at bid opening.
2. The **West Visayas State University-Lambunao Campus** now invites bids for **Construction of WVSU-Lambunao Campus Motorpool/Garage**. Delivery of the Goods is required for **Sixty (60) Calendar days**. Bidders should have completed a contract similar to the Project. The description of an eligible bidder is contained in the Bidding Documents, particularly, in Section II. Instructions to Bidders.
3. Bidding will be conducted through open competitive bidding procedures using non-discretionary "pass/fail" criterion as specified in the 2016 Revised Implementing Rules and Regulations (IRR) of Republic Act 9184 (RA 9184), otherwise known as the "Government Procurement Reform Act".

Bidding is restricted to Filipino citizens/sole proprietorships, cooperatives and partnerships or organizations with at least Sixty percent (60%) interest or outstanding capital stock belonging to citizens of the Philippine, and to citizens or organizations of a country the laws or regulations of which grant similar rights or privileges to Filipino citizens, pursuant to RA5183.
4. A complete set of Bidding Documents may be acquired by interested Bidders on **November 30 to December 20, 2022** from **8:00 A.M. to 5:00 P.M.** and **December 21, 2022** from **8:00AM to 8:45AM ONLY from** the address below and upon payment of the applicable fee for the Bidding Documents, pursuant to the latest Guidelines issued by the GPPB, in the amount of **THREE THOUSAND FIVE PESOS (Php3,500.00) ONLY**.

It may also be downloaded free of charge from the website of the Philippine Government Electronic Procurement System (PhilGEPs) and the website of the Procuring Entity, provided that bidders shall pay the applicable fee for the Bidding Documents not later than the submission of their bids.
5. The **West Visayas State University-Lambunao Campus** will hold a virtual Pre-Bid Conference on **December 09, 2022, 9:00 A.M.**, at **WVSU-LC Finance Office** which shall be open to prospective bidders face to face or through video conferencing or webcasting via zoom (meeting ID: 561 206 1321 ; Passcode: WVSULCBAC) (for registration of interested bidders please send your request to this address bac.lambunao@wvsu.edu.ph)
6. Bids must be duly received by the BAC Secretariat at the address below on or **before 8:45 A.M. on December 21, 2022** or through electronic submission (via

bac.lambunao@wvsu.edu.ph) consisting of an archive format compression and password protection. Late bids shall not be accepted.

7. All bids must be accompanied by a bid security in any of the acceptable forms and in the amount stated in **ITB** Clause 14.
8. Bid opening shall be on **December 21, 2022, 9:00 A.M. via zoom** (meeting ID: 561 206 1321 ; Passcode: WVSULCBAC). Bids will be open in the presence of the bidders' representatives who choose to attend the activity physically/virtually.
9. The **West Visayas State University-Lambunao Campus** reserves the right to reject any and all bids, declare a failure of bidding, or not award the contract at any time prior to contract award in accordance with Section 35.6 and 41 of the 2016 revised IRR of RA 9184 and its IRR, without thereby incurring any liability to the affected bidder or bidders.
10. For further inquiries, refer to:

LUDOVINA L. CATILO/HAZEL A. ACADEMIA

BAC Secretariats
Tel. No.: (033) 533-8053
WVSU-Lambunao Campus
Lambunao, Iloilo

11/30/2022

Approved:

LESTER L. LUCERO, LI. B., Ph. D.
BAC Chairperson

Section II. Instructions to Bidders

1. Scope of Bid

The Procuring Entity, [WVSULC] invites Bids for the [Construction of WVSU-LC Motorpool/Garage], with Project Identification Number [IB2022-11].

[Note: The Project Identification Number is assigned by the Procuring Entity based on its own coding scheme and is not the same as the PhilGEPS reference number, which is generated after the posting of the bid opportunity on the PhilGEPS website.]

The Procurement Project (referred to herein as “Project”) is for the construction of Works, as described in Section VI (Specifications).

2. Funding Information

2.1. The GOP through the source of funding as indicated below for *[indicate funding year]* in the amount of *[indicate amount]*.

2.2. The source of funding is:

[If an early procurement activity, select one and delete others:]

- a. NGA, the National Expenditure Program.
- b. GOCC and GFIs, the proposed Corporate Operating Budget.
- c. LGUs, the proposed Local Expenditure Program.

[If not an early procurement activity, select one and delete others:]

- a. NGA, the General Appropriations Act or Special Appropriations.
- b. GOCC and GFIs, the Corporate Operating Budget.
- c. LGUs, the Annual or Supplemental Budget, as approved by the Sanggunian.

3. Bidding Requirements

The Bidding for the Project shall be governed by all the provisions of RA No. 9184 and its 2016 revised IRR, including its Generic Procurement Manual and associated policies, rules and regulations as the primary source thereof, while the herein clauses shall serve as the secondary source thereof.

Any amendments made to the IRR and other GPPB issuances shall be applicable only to the ongoing posting, advertisement, or invitation to bid by the BAC through the issuance of a supplemental or bid bulletin.

The Bidder, by the act of submitting its Bid, shall be deemed to have inspected the site, determined the general characteristics of the contracted Works and the conditions for this Project, such as the location and the nature of the work; (b) climatic

conditions; (c) transportation facilities; (c) nature and condition of the terrain, geological conditions at the site communication facilities, requirements, location and availability of construction aggregates and other materials, labor, water, electric power and access roads; and (d) other factors that may affect the cost, duration and execution or implementation of the contract, project, or work and examine all instructions, forms, terms, and project requirements in the Bidding Documents.

4. Corrupt, Fraudulent, Collusive, Coercive, and Obstructive Practices

The Procuring Entity, as well as the Bidders and Contractors, shall observe the highest standard of ethics during the procurement and execution of the contract. They or through an agent shall not engage in corrupt, fraudulent, collusive, coercive, and obstructive practices defined under Annex “I” of the 2016 revised IRR of RA No. 9184 or other integrity violations in competing for the Project.

5. Eligible Bidders

5.1. Only Bids of Bidders found to be legally, technically, and financially capable will be evaluated.

5.2. The Bidder must have an experience of having completed a Single Largest Completed Contract (SLCC) that is similar to this Project, equivalent to at least fifty percent (50%) of the ABC adjusted, if necessary, by the Bidder to current prices using the PSA’s CPI, except under conditions provided for in Section 23.4.2.4 of the 2016 revised IRR of RA No. 9184.

A contract is considered to be “similar” to the contract to be bid if it has the major categories of work stated in the **BDS**.

5.3. For Foreign-funded Procurement, the Procuring Entity and the foreign government/foreign or international financing institution may agree on another track record requirement, as specified in the Bidding Document prepared for this purpose.

5.4. The Bidders shall comply with the eligibility criteria under Section 23.4.2 of the 2016 IRR of RA No. 9184.

6. Origin of Associated Goods

There is no restriction on the origin of Goods other than those prohibited by a decision of the UN Security Council taken under Chapter VII of the Charter of the UN.

7. Subcontracts

7.1. The Bidder may subcontract portions of the Project to the extent allowed by the Procuring Entity as stated herein, but in no case more than fifty percent (50%) of the Project.

The Procuring Entity has prescribed that:
[Select one, delete other/s]

- a. Subcontracting is allowed. The portions of Project and the maximum percentage allowed to be subcontracted are indicated in the **BDS**, which shall not exceed fifty percent (50%) of the contracted Works.
 - b. Subcontracting is not allowed.
- 7.1. *[If Procuring Entity has determined that subcontracting is allowed during the bidding , state:]* The Bidder must submit together with its Bid the documentary requirements of the subcontractor(s) complying with the eligibility criterion stated in **ITB** Clause 5 in accordance with Section 23.4 of the 2016 revised IRR of RA No. 9184 pursuant to Section 23.1 thereof.
- 7.2. *[If subcontracting is allowed during the contract implementation stage, state:]* The Supplier may identify its subcontractor during the contract implementation stage. Subcontractors identified during the bidding may be changed during the implementation of this Contract. Subcontractors must submit the documentary requirements under Section 23.1 of the 2016 revised IRR of RA No. 9184 and comply with the eligibility criteria specified in **ITB** Clause 5 to the implementing or end-user unit.
- 7.3. Subcontracting of any portion of the Project does not relieve the Contractor of any liability or obligation under the Contract. The Supplier will be responsible for the acts, defaults, and negligence of any subcontractor, its agents, servants, or workmen as fully as if these were the Contractor's own acts, defaults, or negligence, or those of its agents, servants, or workmen.

8. Pre-Bid Conference

The Procuring Entity will hold a pre-bid conference for this Project on the specified date and time and either at its physical address *{[insert if applicable]}* and/or through videoconferencing/webcasting} as indicated in paragraph 6 of the **IB**.

9. Clarification and Amendment of Bidding Documents

Prospective bidders may request for clarification on and/or interpretation of any part of the Bidding Documents. Such requests must be in writing and received by the Procuring Entity, either at its given address or through electronic mail indicated in the **IB**, at least ten (10) calendar days before the deadline set for the submission and receipt of Bids.

10. Documents Comprising the Bid: Eligibility and Technical Components

- 10.1. The first envelope shall contain the eligibility and technical documents of the Bid as specified in **Section IX. Checklist of Technical and Financial Documents**.

- 10.2. If the eligibility requirements or statements, the bids, and all other documents for submission to the BAC are in foreign language other than English, it must be accompanied by a translation in English, which shall be authenticated by the appropriate Philippine foreign service establishment, post, or the equivalent office having jurisdiction over the foreign bidder's affairs in the Philippines. For Contracting Parties to the Apostille Convention, only the translated documents shall be authenticated through an apostille pursuant to GPPB Resolution No. 13-2019 dated 23 May 2019. The English translation shall govern, for purposes of interpretation of the bid.
- 10.3. A valid PCAB License is required, and in case of joint ventures, a valid special PCAB License, and registration for the type and cost of the contract for this Project. Any additional type of Contractor license or permit shall be indicated in the **BDS**.
- 10.4. A List of Contractor's key personnel (e.g., Project Manager, Project Engineers, Materials Engineers, and Foremen) assigned to the contract to be bid, with their complete qualification and experience data shall be provided. These key personnel must meet the required minimum years of experience set in the **BDS**.
- 10.5. A List of Contractor's major equipment units, which are owned, leased, and/or under purchase agreements, supported by proof of ownership, certification of availability of equipment from the equipment lessor/vendor for the duration of the project, as the case may be, must meet the minimum requirements for the contract set in the **BDS**.

11. Documents Comprising the Bid: Financial Component

- 11.1. The second bid envelope shall contain the financial documents for the Bid as specified in **Section IX. Checklist of Technical and Financial Documents**.
- 11.2. Any bid exceeding the ABC indicated in paragraph 1 of the **IB** shall not be accepted.
- 11.3. For Foreign-funded procurement, a ceiling may be applied to bid prices provided the conditions are met under Section 31.2 of the 2016 revised IRR of RA No. 9184.

12. Alternative Bids

Bidders shall submit offers that comply with the requirements of the Bidding Documents, including the basic technical design as indicated in the drawings and specifications. Unless there is a value engineering clause in the **BDS**, alternative Bids shall not be accepted.

13. Bid Prices

All bid prices for the given scope of work in the Project as awarded shall be considered as fixed prices, and therefore not subject to price escalation during

contract implementation, except under extraordinary circumstances as determined by the NEDA and approved by the GPPB pursuant to the revised Guidelines for Contract Price Escalation guidelines.

14. Bid and Payment Currencies

14.1. Bid prices may be quoted in the local currency or tradeable currency accepted by the BSP at the discretion of the Bidder. However, for purposes of bid evaluation, Bids denominated in foreign currencies shall be converted to Philippine currency based on the exchange rate as published in the BSP reference rate bulletin on the day of the bid opening.

14.2. *Payment of the contract price shall be made in:*

[Select one, delete other/s]

a. Philippine Pesos.

b. *[indicate currency if procurement involves a foreign-denominated bid as allowed by the Procuring Entity, which shall be tradeable or acceptable by the BSP.]*

15. Bid Security

15.1. The Bidder shall submit a Bid Securing Declaration or any form of Bid Security in the amount indicated in the **BDS**, which shall be not less than the percentage of the ABC in accordance with the schedule in the **BDS**.

15.2. The Bid and bid security shall be valid until *[indicate date]*. Any bid not accompanied by an acceptable bid security shall be rejected by the Procuring Entity as non-responsive.

16. Sealing and Marking of Bids

Each Bidder shall submit one copy of the first and second components of its Bid.

The Procuring Entity may request additional hard copies and/or electronic copies of the Bid. However, failure of the Bidders to comply with the said request shall not be a ground for disqualification.

If the Procuring Entity allows the submission of bids through online submission to the given website or any other electronic means, the Bidder shall submit an electronic copy of its Bid, which must be digitally signed. An electronic copy that cannot be opened or is corrupted shall be considered non-responsive and, thus, automatically disqualified.

17. Deadline for Submission of Bids

The Bidders shall submit on the specified date and time and either at its physical address or through online submission as indicated in paragraph 7 of the **IB**.

18. Opening and Preliminary Examination of Bids

18.1. The BAC shall open the Bids in public at the time, on the date, and at the place specified in paragraph 9 of the **IB**. The Bidders' representatives who are present shall sign a register evidencing their attendance. In case videoconferencing, webcasting or other similar technologies will be used, attendance of participants shall likewise be recorded by the BAC Secretariat.

In case the Bids cannot be opened as scheduled due to justifiable reasons, the rescheduling requirements under Section 29 of the 2016 revised IRR of RA No. 9184 shall prevail.

18.2. The preliminary examination of Bids shall be governed by Section 30 of the 2016 revised IRR of RA No. 9184.

19. Detailed Evaluation and Comparison of Bids

19.1. The Procuring Entity's BAC shall immediately conduct a detailed evaluation of all Bids rated "*passed*" using non-discretionary pass/fail criteria. The BAC shall consider the conditions in the evaluation of Bids under Section 32.2 of 2016 revised IRR of RA No. 9184.

19.2. If the Project allows partial bids, all Bids and combinations of Bids as indicated in the **BDS** shall be received by the same deadline and opened and evaluated simultaneously so as to determine the Bid or combination of Bids offering the lowest calculated cost to the Procuring Entity. Bid Security as required by **ITB** Clause 16 shall be submitted for each contract (lot) separately.

19.3. In all cases, the NFCC computation pursuant to Section 23.4.2.6 of the 2016 revised IRR of RA No. 9184 must be sufficient for the total of the ABCs for all the lots participated in by the prospective Bidder.

20. Post Qualification

Within a non-extendible period of five (5) calendar days from receipt by the Bidder of the notice from the BAC that it submitted the Lowest Calculated Bid, the Bidder shall submit its latest income and business tax returns filed and paid through the BIR Electronic Filing and Payment System (eFPS), and other appropriate licenses and permits required by law and stated in the **BDS**.

21. Signing of the Contract

The documents required in Section 37.2 of the 2016 revised IRR of RA No. 9184 shall form part of the Contract. Additional Contract documents are indicated in the **BDS**.

Section III. Bid Data Sheet

Bid Data Sheet

ITB Clause																
5.2	For this purpose, contracts similar to the Project refer to contracts which have the same major categories of work, which shall be: Construction of WVSU-Lambunao Campus Motorpool/Garage															
7.1	<i>Subcontracting is not Allowed.</i>															
10.3	<i>PCAB LICENSE (ISO Certified)</i>															
10.4	The key personnel must meet the required minimum years of experience set below: <table border="1" style="width: 100%; border-collapse: collapse;"> <thead> <tr> <th style="text-align: left;"><u>Key Personnel</u></th> <th style="text-align: center;"><u>General Experience</u></th> <th style="text-align: center;"><u>Relevant Experience</u></th> </tr> </thead> <tbody> <tr> <td>Structural/Civil Engineer</td> <td style="text-align: center;">3 years</td> <td></td> </tr> <tr> <td>Master Electrician</td> <td style="text-align: center;">3 years</td> <td></td> </tr> <tr> <td>Master Plumber/Sanitary Engineer</td> <td style="text-align: center;">3 years</td> <td></td> </tr> <tr> <td>Safety Officer</td> <td style="text-align: center;">3 years</td> <td></td> </tr> </tbody> </table>	<u>Key Personnel</u>	<u>General Experience</u>	<u>Relevant Experience</u>	Structural/Civil Engineer	3 years		Master Electrician	3 years		Master Plumber/Sanitary Engineer	3 years		Safety Officer	3 years	
<u>Key Personnel</u>	<u>General Experience</u>	<u>Relevant Experience</u>														
Structural/Civil Engineer	3 years															
Master Electrician	3 years															
Master Plumber/Sanitary Engineer	3 years															
Safety Officer	3 years															
	The minimum major equipment requirements are the following: <table border="1" style="width: 100%; border-collapse: collapse;"> <thead> <tr> <th style="text-align: left;"><u>Equipment</u></th> <th style="text-align: center;"><u>Capacity</u></th> <th style="text-align: center;"><u>Number of Units</u></th> </tr> </thead> <tbody> <tr> <td>Concrete Vibrator</td> <td></td> <td style="text-align: center;">1</td> </tr> <tr> <td>Mixer</td> <td style="text-align: center;">1 bagger</td> <td style="text-align: center;">1</td> </tr> <tr> <td>Welding Machine</td> <td></td> <td style="text-align: center;">1</td> </tr> </tbody> </table>	<u>Equipment</u>	<u>Capacity</u>	<u>Number of Units</u>	Concrete Vibrator		1	Mixer	1 bagger	1	Welding Machine		1			
<u>Equipment</u>	<u>Capacity</u>	<u>Number of Units</u>														
Concrete Vibrator		1														
Mixer	1 bagger	1														
Welding Machine		1														
12	<i>No other Instruction</i>															
15.1	The bid security shall be in the form of a Bid Securing Declaration or any of the following forms and amounts: <ul style="list-style-type: none"> a. The amount of not less than Php Php45,090.01, if bid security is in cash, cashier's/manager's check, bank draft/guarantee or irrevocable letter of credit; b. The amount of not less than Php 112,725.03 if bid security is in Surety Bond. 															
19.2	Partial bids are not allowed;															
20	<i>No further instructions</i>															
21	<i>List of additional contract documents relevant to the Project: construction schedule and S-curve, manpower schedule, construction methods, equipment utilization schedule, construction safety and health program approved by the Department of Labor and Employment, and PERT/CPM</i>															

Section IV. General Conditions of Contract

1. Scope of Contract

This Contract shall include all such items, although not specifically mentioned, that can be reasonably inferred as being required for its completion as if such items were expressly mentioned herein. All the provisions of RA No. 9184 and its 2016 revised IRR, including the Generic Procurement Manual, and associated issuances, constitute the primary source for the terms and conditions of the Contract, and thus, applicable in contract implementation. Herein clauses shall serve as the secondary source for the terms and conditions of the Contract.

This is without prejudice to Sections 74.1 and 74.2 of the 2016 revised IRR of RA No. 9184 allowing the GPPB to amend the IRR, which shall be applied to all procurement activities, the advertisement, posting, or invitation of which were issued after the effectivity of the said amendment.

2. Sectional Completion of Works

If sectional completion is specified in the **Special Conditions of Contract (SCC)**, references in the Conditions of Contract to the Works, the Completion Date, and the Intended Completion Date shall apply to any Section of the Works (other than references to the Completion Date and Intended Completion Date for the whole of the Works).

3. Possession of Site

3.1 The Procuring Entity shall give possession of all or parts of the Site to the Contractor based on the schedule of delivery indicated in the **SCC**, which corresponds to the execution of the Works. If the Contractor suffers delay or incurs cost from failure on the part of the Procuring Entity to give possession in accordance with the terms of this clause, the Procuring Entity's Representative shall give the Contractor a Contract Time Extension and certify such sum as fair to cover the cost incurred, which sum shall be paid by Procuring Entity.

3.2 If possession of a portion is not given by the above date, the Procuring Entity will be deemed to have delayed the start of the relevant activities. The resulting adjustments in contract time to address such delay may be addressed through contract extension provided under Annex "E" of the 2016 revised IRR of RA No. 9184.

4. The Contractor's Obligations

The Contractor shall employ the key personnel named in the Schedule of Key Personnel indicating their designation, in accordance with **ITB** Clause 10.3 and specified in the **BDS**, to carry out the supervision of the Works.

The Procuring Entity will approve any proposed replacement of key personnel only if their relevant qualifications and abilities are equal to or better than those of the personnel listed in the Schedule.

5. Performance Security

- 5.1. Within ten (10) calendar days from receipt of the Notice of Award from the Procuring Entity but in no case later than the signing of the contract by both parties, the successful Bidder shall furnish the performance security in any of the forms prescribed in Section 39 of the 2016 revised IRR.
- 5.2. The Contractor, by entering into the Contract with the Procuring Entity, acknowledges the right of the Procuring Entity to institute action pursuant to RA No. 3688 against any subcontractor be they an individual, firm, partnership, corporation, or association supplying the Contractor with labor, materials and/or equipment for the performance of this Contract.

6. Site Investigation Reports

The Contractor, in preparing the Bid, shall rely on any Site Investigation Reports referred to in the SCC supplemented by any information obtained by the Contractor.

7. Warranty

- 7.1. In case the Contractor fails to undertake the repair works under Section 62.2.2 of the 2016 revised IRR, the Procuring Entity shall forfeit its performance security, subject its property(ies) to attachment or garnishment proceedings, and perpetually disqualify it from participating in any public bidding. All payables of the GOP in his favor shall be offset to recover the costs.
- 7.2. The warranty against Structural Defects/Failures, except that occasioned-on force majeure, shall cover the period from the date of issuance of the Certificate of Final Acceptance by the Procuring Entity. Specific duration of the warranty is found in the SCC.

8. Liability of the Contractor

Subject to additional provisions, if any, set forth in the SCC, the Contractor's liability under this Contract shall be as provided by the laws of the Republic of the Philippines.

If the Contractor is a joint venture, all partners to the joint venture shall be jointly and severally liable to the Procuring Entity.

9. Termination for Other Causes

Contract termination shall be initiated in case it is determined *prima facie* by the Procuring Entity that the Contractor has engaged, before, or during the implementation of the contract, in unlawful deeds and behaviors relative to contract acquisition and implementation, such as, but not limited to corrupt, fraudulent, collusive, coercive, and obstructive practices as stated in ITB Clause 4.

10. Dayworks

Subject to the guidelines on Variation Order in Annex “E” of the 2016 revised IRR of RA No. 9184, and if applicable as indicated in the SCC, the Dayworks rates in the Contractor’s Bid shall be used for small additional amounts of work only when the Procuring Entity’s Representative has given written instructions in advance for additional work to be paid for in that way.

11. Program of Work

11.1. The Contractor shall submit to the Procuring Entity’s Representative for approval the said Program of Work showing the general methods, arrangements, order, and timing for all the activities in the Works. The submissions of the Program of Work are indicated in the SCC.

11.2. The Contractor shall submit to the Procuring Entity’s Representative for approval an updated Program of Work at intervals no longer than the period stated in the SCC. If the Contractor does not submit an updated Program of Work within this period, the Procuring Entity’s Representative may withhold the amount stated in the SCC from the next payment certificate and continue to withhold this amount until the next payment after the date on which the overdue Program of Work has been submitted.

12. Instructions, Inspections and Audits

The Contractor shall permit the GOP or the Procuring Entity to inspect the Contractor’s accounts and records relating to the performance of the Contractor and to have them audited by auditors of the GOP or the Procuring Entity, as may be required.

13. Advance Payment

The Procuring Entity shall, upon a written request of the Contractor which shall be submitted as a Contract document, make an advance payment to the Contractor in an amount not exceeding fifteen percent (15%) of the total contract price, to be made in lump sum, or at the most two installments according to a schedule specified in the SCC, subject to the requirements in Annex “E” of the 2016 revised IRR of RA No. 9184.

14. Progress Payments

The Contractor may submit a request for payment for Work accomplished. Such requests for payment shall be verified and certified by the Procuring Entity’s Representative/Project Engineer. Except as otherwise stipulated in the SCC, materials and equipment delivered on the site but not completely put in place shall not be included for payment.

15. Operating and Maintenance Manuals

- 15.1. If required, the Contractor will provide “as built” Drawings and/or operating and maintenance manuals as specified in the SCC.
- 15.2. If the Contractor does not provide the Drawings and/or manuals by the dates stated above, or they do not receive the Procuring Entity’s Representative’s approval, the Procuring Entity’s Representative may withhold the amount stated in the SCC from payments due to the Contractor.

Section V. Special Conditions of Contract

Special Conditions of Contract

GCC Clause	
2	Target completion date is Sixty (60) Calendar Days for the whole of the scope of works of contract
4.1	No further instructions.
6	<i>No Further instructions.</i>
7.2	<i>No further instructions (standard warranty applies)</i>
10	a. Dayworks are applicable at the rate shown in the Contractor's original Bid.
11.1	The Contractor shall submit the Program of Work to the Procuring Entity's Representative within Three [3] days of delivery of the Notice of Award.
11.2	The amount to be withheld for late submission of an updated Program of Work is <i>[insert amount]</i> .
13	The amount of the advance payment is 15% of the total contract price.
14	<i>No further instruction.</i>
15.1	The date by which operating and maintenance manuals are required is <i>[date]</i> . The date by which "as built" drawings are required is <i>[date]</i> .
15.2	The amount to be withheld for failing to produce "as built" drawings and/or operating and maintenance manuals by the date required is <i>[amount in local currency]</i> .

Section VI. Specifications

Section VI. Specifications

Project Title : **Construction of WVSU-Lambunao Campus Motorpool/Garage**
 Location : **West Visayas State University Lambunao Campus, Lambunao, Iloilo**
 Appropriation: **2,254,500.62 Php**
 Classification: **By Contract**
 Calendar days: **60**

	Designation	No. of persons	No. of days	Daily Rate	Amount
1.0	GENERAL REQUIREMENTS				
1.1	MOBILIZATION AND DEMOBILIZATION				
	DESIGNATION	NO. OF PERSONS	NO. OF DAYS	DAILY RATE	AMOUNT (Php)
A.	LABOR				
	Sub-Total for A				
B.	EQUIPMENT				
	1.) Minor Tools (10% of Labor)				
	Sub-Total for B				
C.	Total (A+B)				
D.	Output Per Day				
	NAME AND SPECIFICATION				
E.	MATERIALS	QUANTITY	UNIT	UNIT COST	AMOUNT (Php)
	Sub-Total for E				
F.	DIRECT UNIT COST (C+E)				
G.	OVERHEAD, CONTINGENCIES AND MISCELLANEOUS (OCM) EXPENSES			0	-
H.	CONTRACTOR'S PROFIT			0	-
I.	VALUE ADDED TAX (VAT)			5%	
J.	TOTAL UNIT COST				
D.	Output Per Day				
1.2	TEMPORARY FACILITIES				
	Bunkhouse and Warehouse				
	DESIGNATION	NO. OF PERSONS	NO. OF DAYS	DAILY RATE	AMOUNT (Php)
A.	LABOR				
	1.) Construction Foreman				
	2.) Skilled Worker				
	3.) Laborer				
	Sub-Total for A				
B.	EQUIPMENT				
	1.) Minor Tools (10% of Labor)				
	Sub-Total for B				
C.	Total (A+B)				
D.	Output Per Day				

	NAME AND SPECIFICATION				
E.	MATERIALS	QUANTITY	UNIT	UNIT COST	AMOUNT (PhP)
	Long Span Rib type	33			
	Ordinary plywood 3/4" 1.2mx2.4m	2			
	Good lumber (2x2x8ft)	10			
	Assorted CWN (2",3",4")	5.5478			
	1/8" x 100m Nylon String	1			
	Sub-Total for E				
F.	DIRECT UNIT COST (C+E)				
G.	OVERHEAD, CONTINGENCIES AND MISCELLANEOUS (OCM) EXPENSES			15%	
H.	CONTRACTOR'S PROFIT			10%	
I.	VALUE ADDED TAX (VAT)			5%	
J.	TOTAL UNIT COST				
2.0	Site Works				
2.1	LAYOUT AND STAKING	1	LOT		
	DESIGNATION	NO. OF PERSONS	NO. OF DAYS	DAILY RATE	AMOUNT (PhP)
A.	LABOR				
	Sub-Total for A				
B.	EQUIPMENT				
	1.) Minor Tools (10% of Labor)				
	Sub-Total for B				
C.	Total (A+B)				
D.	Output Per Day				
E.	MATERIALS	QUANTITY	UNIT	UNIT COST	AMOUNT (PhP)
	2"x2"x10' good lumber	33.33	bd. ft.		
	assorted cwn	5	kg		
	1/8" x 100m nylon string	2	rolls		
				total	
	NAME AND SPECIFICATION				
F.	DIRECT UNIT COST				
G.	OVERHEAD, CONTINGENCIES AND MISCELLANEOUS (OCM) EXPENSES			15%	
H.	CONTRACTOR'S PROFIT			10%	
I.	VALUE ADDED TAX (VAT)			5%	
J.	TOTAL UNIT COST				
2.2	EARTHWORKS				
2.2.1	EXCAVATION				
	GRADE BEAM	8	cu.m.		
	DESIGNATION	NO. OF PERSONS	NO. OF DAYS	DAILY RATE	AMOUNT (PhP)
A.	LABOR				
	Sub-Total for A				
B.	EQUIPMENT				
	1.) Minor Tools (10% of Labor)				
	Sub-Total for B				
C.	Total (A+B)				

D.	Output Per Day	1.2 cu. m./m-day			
	NAME AND SPECIFICATION				
E.	DIRECT UNIT COST				
F.	OVERHEAD, CONTINGENCIES AND MISCELLANEOUS (OCM) EXPENSES			15%	
G.	CONTRACTOR'S PROFIT			10%	
H.	VALUE ADDED TAX (VAT)			5%	
I.	TOTAL UNIT COST				
	FOOTING	51	cu.m.		
	DESIGNATION	NO. OF PERSONS	NO. OF DAYS	DAILY RATE	AMOUNT (PhP)
A.	LABOR				
	Sub-Total for A				
B.	EQUIPMENT				
	1.) Minor Tools (10% of Labor)				
	Sub-Total for B				
C.	Total (A+B)				
D.	Output Per Day	1.2 cu. m./m-day			
	NAME AND SPECIFICATION				
E.	DIRECT UNIT COST				
F.	OVERHEAD, CONTINGENCIES AND MISCELLANEOUS (OCM) EXPENSES			15%	
G.	CONTRACTOR'S PROFIT			10%	
H.	VALUE ADDED TAX (VAT)			5%	
I.	TOTAL UNIT COST				
2.2.2	BACKFILL AND COMPACTION				
	FOOTING 43.0 cu.m.				
	DESIGNATION	NO. OF PERSONS	NO. OF DAYS	DAILY RATE	AMOUNT (PhP)
A.	LABOR				
	Sub-total for A				
B.	EQUIPMENT				
	1.) Minor Tools (10% of Labor)				
	Sub-Total for B				
C.	Total (A+B)				
D.	Output Per Day	2 cu.m./m- day			
	NAME AND SPECIFICATION				
E.	DIRECT UNIT COST				
F.	OVERHEAD, CONTINGENCIES AND MISCELLANEOUS (OCM) EXPENSES			15%	
G.	CONTRACTOR'S PROFIT			10%	
H.	VALUE ADDED TAX (VAT)			5%	
I.	TOTAL UNIT COST				

2.2.3	GRAVEL BEDDING				
	GRADE BEAM 1.0 cu.m.				
	DESIGNATION	NO. OF PERSONS	NO. OF DAYS	DAILY RATE	AMOUNT (PhP)
A.	LABOR				
	Sub-Total for A				
B.	EQUIPMENT				
	1.) Minor Tools (10% of Labor)				
	Sub-Total for B				
C.	Total (A+B)				
D.	Output Per Day	3 cu.m./m-day			
E.	MATERIALS	QUANTITY	UNIT	UNIT COST	AMOUNT (PhP)
	GRAVEL G1	1	cu. m.		
	NAME AND SPECIFICATION				
F.	DIRECT UNIT COST				
G.	OVERHEAD, CONTINGENCIES AND MISCELLANEOUS (OCM) EXPENSES			15%	
H.	CONTRACTOR'S PROFIT			10%	
I.	VALUE ADDED TAX (VAT)			5%	
J.	TOTAL UNIT COST				
	FOOTING 4.0 cu.m.				
	DESIGNATION	NO. OF PERSONS	NO. OF DAYS	DAILY RATE	AMOUNT (PhP)
A.	LABOR				
	Sub-Total for A				
B.	EQUIPMENT				
	1.) Minor Tools (10% of Labor)				
	Sub-Total for B				
C.	Total (A+B)				
D.	Output Per Day	3 cu.m./m-day			
E.	MATERIALS	QUANTITY	UNIT	UNIT COST	AMOUNT (PhP)
	GRAVEL G1	4	cu. m.		
	NAME AND SPECIFICATION				
F.	DIRECT UNIT COST				
G.	OVERHEAD, CONTINGENCIES AND MISCELLANEOUS (OCM) EXPENSES			15%	
H.	CONTRACTOR'S PROFIT			10%	
I.	VALUE ADDED TAX (VAT)			5%	
J.	TOTAL UNIT COST				
3.0	STRUCTURAL CONCRETE				
3.1	GRADE BEAM				

	CONCRETING	4.87	cu.m.		
	DESIGNATION	NO. OF PERSONS	NO. OF DAYS	DAILY RATE	AMOUNT (PhP)
A.	LABOR				
	Sub-Total for A				
B.	EQUIPMENT				
	1.) Concrete mixer (ONE-BAGGER)	1	1		
	2.) Concrete Vibrator	1	1		
	Sub-Total for B				
C.	Total (A+B)				
D.	Output Per Day	0.60 cu.m./m-day			
	NAME AND SPECIFICATION				
E.	MATERIALS	QUANTITY	UNIT	UNIT COST	AMOUNT (PhP)
	Gravel 3/4"	4.87	cu. m.		
	washed sand	4.87	cu. m.		
	Portland Cement	55	bags		
	Sub-Total for E				
F.	DIRECT UNIT COST (C+E)				
G.	OVERHEAD, CONTINGENCIES AND MISCELLANEOUS (OCM) EXPENSES			15%	
H.	CONTRACTOR'S PROFIT			10%	
I.	VALUE ADDED TAX (VAT)			5%	
J.	TOTAL UNIT COST				
3.2	FOUNDATION				
	FOOTING CONCRETING	4.99	cu.m.		
	DESIGNATION	NO. OF PERSONS	NO. OF DAYS	DAILY RATE	AMOUNT (PhP)
A.	LABOR				
	Sub-Total for A				
B.	EQUIPMENT				
	1.) Concrete mixer	1	1		
	Sub-Total for B				
C.	Total (A+B)				
D.	Output Per Day	0.60 cu.m./m-day			
	NAME AND SPECIFICATION				
E.	MATERIALS	QUANTITY	UNIT	UNIT COST	AMOUNT (PhP)
	Gravel G1	4.99	cu. m.		
	washed sand	4.99	cu. m.		
	Portland Cement	53	bags		
	Sub-Total for E				
F.	DIRECT UNIT COST (C+E)				
G.	OVERHEAD, CONTINGENCIES AND			15%	

	MISCELLANEOUS (OCM) EXPENSES				
H.	CONTRACTOR'S PROFIT			10%	
I.	VALUE ADDED TAX (VAT)			5%	
J.	TOTAL UNIT COST				
3.3	COLUMN				
	COLUMN AND PEDESTAL CONCRETING	4.24	cu.m.		
	DESIGNATION	NO. OF PERSONS	NO. OF DAYS	DAILY RATE	AMOUNT (PhP)
A.	LABOR				
	Sub-Total for A				
B.	EQUIPMENT				
	1.) Minor Tools (10% of Labor)				
	2.) Concrete mixer (one-bagger)	1	1		
	3.) Concrete Vibrator	1	1		
	Sub-Total for B				
C.	Total (A+B)				
D.	Output Per Day	0.60			
	NAME AND SPECIFICATION	cu.m./m-day			
E.	MATERIALS	QUANTITY	UNIT	UNIT COST	AMOUNT (PhP)
	Gravel G3/4	4.24	cu. m.		
	washed sand	4.24	cu. m.		
	Portland Cement	45	bags		
	Sub-Total for E				
F.	DIRECT UNIT COST (C+E)				
G.	OVERHEAD, CONTINGENCIES AND MISCELLANEOUS (OCM) EXPENSES			15%	
H.	CONTRACTOR'S PROFIT			10%	
I.	VALUE ADDED TAX (VAT)			5%	
J.	TOTAL UNIT COST				
3.4	FLOOR SLAB				
	CONCRETING	32.64	cu.m.		
	DESIGNATION	NO. OF PERSONS	NO. OF DAYS	DAILY RATE	AMOUNT
A.	LABOR				
	Sub-Total for A				
B.	EQUIPMENT				
	1.) Minor Tools (10% of Labor)				
	2.) Concrete Mixer (One-Bagger)	1	1		
	Sub-Total for B				
C.	Total (A+B)				
D.	Output Per Day	0.60			
	NAME AND SPECIFICATION	cu.m./m-day			

E.	MATERIALS	QUANTITY	UNIT	UNIT COST	AMOUNT (Php)
	Gravel G3/4	32.64	cu. m.		
	washed sand	32.64	cu. m.		
	Portland Cement	345	bags		
	Sub-Total for E				
F.	DIRECT UNIT COST (C+E)				
G.	OVERHEAD, CONTINGENCIES AND MISCELLANEOUS (OCM) EXPENSES			15%	
H.	CONTRACTOR'S PROFIT			10%	
I.	VALUE ADDED TAX (VAT)			5%	
J.	TOTAL UNIT COST				
3.5	ROOF BEAM				
	CONCRETING	1.2495	CU.M.		
	DESIGNATION	NO. OF PERSONS	NO. OF DAYS	DAILY RATE	AMOUNT
A.	LABOR				
	Sub-Total for A				
B.	EQUIPMENT				
	1.) Minor Tools (10% of Labor)				
	2.) Concrete Mixer (One-Bagger)	1	1		
	Sub-Total for B				
C.	Total (A+B)				
D.	Output Per Day	0.60			
	NAME AND SPECIFICATION	cu.m./m-day			
E.	MATERIALS	QUANTITY	UNIT	UNIT COST	AMOUNT
	Gravel G3/4	1.2495	cu. m.		
	washed sand	1.2495	cu. m.		
	Portland Cement	14	bags		
	Sub-Total for E				
F.	DIRECT UNIT COST (C+E)				
G.	OVERHEAD, CONTINGENCIES AND MISCELLANEOUS (OCM) EXPENSES			15%	
H.	CONTRACTOR'S PROFIT			10%	
I.	VALUE ADDED TAX (VAT)			5%	
J.	TOTAL UNIT COST				
3.6	FORMWORKS				
3.6.1	GRADE BEAM	36.19	sq m		
	DESIGNATION	NO. OF PERSONS	NO. OF DAYS	DAILY RATE	AMOUNT
A.	LABOR				
	Sub-Total for A				
B.	EQUIPMENT				
	1.) Minor Tools (10% of Labor)				
	Sub-Total for B				

C.	Total (A+B)				
D.	Output Per Day	3.38 sq.m./m-day			
E.	MATERIALS	QUANTITY	UNIT	UNIT COST	AMOUNT (PhP)
	2"x2"x10' good lumber	126.54	bd.ft.		
	3/4" Ordinary Plywood 4'x8'	7	sht		
	Assorted CW Nails (2", 3", 4", 5")	10	kilos		
	Sub-Total for E				
	NAME AND SPECIFICATION				
F.	DIRECT UNIT COST				
G.	OVERHEAD, CONTINGENCIES AND MISCELLANEOUS (OCM) EXPENSES			15%	
H.	CONTRACTOR'S PROFIT			10%	
I.	VALUE ADDED TAX (VAT)			5%	
J.	TOTAL UNIT COST				
3.6.2	COLUMN AND PEDESTAL	53.88	sq.m.		
	DESIGNATION	NO. OF PERSONS	NO. OF DAYS	DAILY RATE	AMOUNT (PhP)
A.	LABOR				
	Sub-Total for A				
B.	EQUIPMENT				
	1.) Minor Tools (10% of Labor)				
	Sub-Total for B				
C.	Total (A+B)				
D.	Output Per Day	3.38 sq.m./m-day			
E.	MATERIALS	QUANTITY	UNIT	UNIT COST	AMOUNT (PhP)
	2"x2"x10' good lumber	109.89	bd ft		
	3/4" Ordinary Plywood 4'x8'	10	sht		
	Assorted CW Nails (2", 3", 4", 5")	10	kilos		
	Sub-Total for E				
	NAME AND SPECIFICATION				
F.	DIRECT UNIT COST				
G.	OVERHEAD, CONTINGENCIES AND MISCELLANEOUS (OCM) EXPENSES			15%	
H.	CONTRACTOR'S PROFIT			10%	
I.	VALUE ADDED TAX (VAT)			5%	
J.	TOTAL UNIT COST				
3.6.3	FOOTING	3.96	sq.m.		
	DESIGNATION	NO. OF PERSONS	NO. OF DAYS	DAILY RATE	AMOUNT (PhP)
A.	LABOR				
	Sub-Total for A				

B.	EQUIPMENT				
	1.) Minor Tools (10% of Labor)				
	Sub-Total for B				
C.	Total (A+B)				
D.	Output Per Day	3.38 sq.m./m- day			
E.	MATERIALS	QUANTITY	UNIT	UNIT COST	AMOUNT (PhP)
	2"x2"x10' good lumber	9.99	bd.ft.		
	3/4" Ordinary Plywood 4'x8'	1	sht		
	Assorted CW Nails (2", 3" , 4" , 5")	5	kilos		
	Sub-Total for E				
	NAME AND SPECIFICATION				
F.	DIRECT UNIT COST				
G.	OVERHEAD, CONTINGENCIES AND MISCELLANEOUS (OCM) EXPENSES			15%	
H.	CONTRACTOR'S PROFIT			10%	
I.	VALUE ADDED TAX (VAT)			5%	
J.	TOTAL UNIT COST				
3.6.4	ROOF BEAM	16.065	sq.m.		
	DESIGNATION	NO. OF PERSONS	NO. OF DAYS	DAILY RATE	AMOUNT (PhP)
A.	LABOR				
	Sub-Total for A				
B.	EQUIPMENT				
	1.) Minor Tools (10% of Labor)				
	Sub-Total for B				
C.	Total (A+B)				
D.	Output Per Day	3.38 sq.m./m- day			
E.	MATERIALS	QUANTITY	UNIT	UNIT COST	AMOUNT (PhP)
	2"x2"x10' good lumber	53.28	bd.ft.		
	3/4" Ordinary Plywood 4'x8'	3	sht		
	Assorted CW Nails (2", 3" , 4" , 5")	5	kilos		
	Sub-Total for E				
	NAME AND SPECIFICATION				
F.	DIRECT UNIT COST				
G.	OVERHEAD, CONTINGENCIES AND MISCELLANEOUS (OCM) EXPENSES			15%	
H.	CONTRACTOR'S PROFIT			10%	
I.	VALUE ADDED TAX (VAT)			5%	
J.	TOTAL UNIT COST				
4.0	REINFORCING STEEL				
4.1	GRADE BEAM	116.637	kgs		
	DESIGNATION	NO. OF PERSONS	NO. OF DAYS	DAILY RATE	AMOUNT (PhP)
A.	LABOR				

	Sub-Total for A				
B.	EQUIPMENT				
	1.) Minor Tools (10% of Labor)				
	Sub-Total for B				
C.	Total (A+B)				
D.	Output Per Day				
	Fabrication	114 kg/m-d			
	Installation	100 kg/m-d			
	NAME AND SPECIFICATION				
E.	MATERIALS	QUANTITY	UNIT	UNIT COST	AMOUNT (PhP)
	10mmx6m RSB	42	kilos		
	16mmx6m RSB	87	kilos		
	tie wires	15	kilos		
	hacksaw blades	1	box (100 pcs)		
	Sub-Total for E				
F.	DIRECT UNIT COST (C+E)				
G.	OVERHEAD, CONTINGENCIES AND MISCELLANEOUS (OCM) EXPENSES			15%	
H.	CONTRACTOR'S PROFIT			10%	
I.	VALUE ADDED TAX (VAT)			5%	
J.	TOTAL UNIT COST				
4.2	ROOF BEAM	45.1561	kgs		
	DESIGNATION	NO. OF PERSONS	NO. OF DAYS	DAILY RATE	AMOUNT (PhP)
A.	LABOR				
	1.) Construction Foreman	1	2.5		
	2.) Skilled Worker	5	2.5		
	3.) Laborer	5	2.5		
	Sub-Total for A				
B.	EQUIPMENT				
	1.) Minor Tools (10% of Labor)				
	Sub-Total for B				
C.	Total (A+B)				
D.	Output Per Day				
	Fabrication	114 kg/m-d			
	Installation	100 kg/m-d			
	NAME AND SPECIFICATION				
E.	MATERIALS	QUANTITY	UNIT	UNIT COST	AMOUNT (PhP)
	10mmx6m RSB	29.546	kilos		
	16mmx6m RSB	15.6101	kilos		
	tie wires	15	kilos		
	hacksaw blades	1	box (100 pcs)		
	Sub-Total for E				
F.	DIRECT UNIT COST (C+E)				
G.	OVERHEAD, CONTINGENCIES AND MISCELLANEOUS (OCM) EXPENSES			15%	
H.	CONTRACTOR'S PROFIT			10%	
I.	VALUE ADDED TAX (VAT)			5%	

J.	TOTAL UNIT COST				
4.3	FOUNDATION	131.14	kg		
	DESIGNATION	NO. OF PERSONS	NO. OF DAYS	DAILY RATE	AMOUNT (PhP)
A.	LABOR				
	Sub-Total for A				
B.	EQUIPMENT				
	1.) Minor Tools (10% of Labor)				
	Sub-Total for B				
C.	Total (A+B)				
D.	Output Per Day				
	Fabrication	114 kg/m-d			
	Installation	100 kg/m-d			
	NAME AND SPECIFICATION				
E.	MATERIALS	QUANTITY	UNIT	UNIT COST	AMOUNT (PhP)
	16mmx6m RSB	131.14	kilos		
	tie wires	10	kilos		
	Sub-Total for E				
F.	DIRECT UNIT COST (C+E)				
G.	OVERHEAD, CONTINGENCIES AND MISCELLANEOUS (OCM) EXPENSES			15%	
H.	CONTRACTOR'S PROFIT			10%	
I.	VALUE ADDED TAX (VAT)			5%	
J.	TOTAL UNIT COST				
4.4	FLOOR SLAB	148.697	kg		
	DESIGNATION	NO. OF PERSONS	NO. OF DAYS	DAILY RATE	AMOUNT (PhP)
A.	LABOR				
	1.) Construction Foreman	1	3		
	2.) Skilled Worker	5	3		
	3.) Laborer	5	3		
	Sub-Total for A				
B.	EQUIPMENT				
	1.) Minor Tools (10% of Labor)				
	Sub-Total for B				
C.	Total (A+B)				
D.	Output Per Day				
	Fabrication	114 kg/m-d			
	Installation	100 kg/m-d			
	NAME AND SPECIFICATION				
E.	MATERIALS	QUANTITY	UNIT	UNIT COST	AMOUNT (PhP)
	10mmx6m RSB	163.57	kilos		
	hacksaw blades	1	box (100pcs)		
	tie wires	20	kilos		

	Sub-Total for E				
F.	DIRECT UNIT COST (C+E)				
G.	OVERHEAD, CONTINGENCIES AND MISCELLANEOUS (OCM) EXPENSES			15%	
H.	CONTRACTOR'S PROFIT			10%	
I.	VALUE ADDED TAX (VAT)			5%	
J.	TOTAL UNIT COST				
4.5	COLUMNS	210.883	kg		
	DESIGNATION	NO. OF PERSONS	NO. OF DAYS	DAILY RATE	AMOUNT (Php)
A.	LABOR				
	Sub-Total for A				
B.	EQUIPMENT				
	1.) Minor Tools (10% of Labor)				
	Sub-Total for B				
C.	Total (A+B)				
D.	Output Per Day				
	Fabrication	114 kg/m-d			
	Installation	100 kg/m-d			
	NAME AND SPECIFICATION				
E.	MATERIALS	QUANTITY	UNIT	UNIT COST	AMOUNT (Php)
	16mmx6m RSB	137.46	kilos		
	10mmx6m RSB	73.423	kilos		
	hacksaw blades	1	box (100pcs)		
	tie wires	20	kilos		
	Sub-Total for E				
F.	DIRECT UNIT COST (C+E)				
G.	OVERHEAD, CONTINGENCIES AND MISCELLANEOUS (OCM) EXPENSES			15%	
H.	CONTRACTOR'S PROFIT			10%	
I.	VALUE ADDED TAX (VAT)			5%	
J.	TOTAL UNIT COST				
5.0	MASONRY WORKS				
5.1	CHB WALL	95.454	sq.m.		
	DESIGNATION	NO. OF PERSONS	NO. OF DAYS	DAILY RATE	AMOUNT (Php)
A.	LABOR				
	Sub-Total for A				
B.	EQUIPMENT				
	1.) Minor Tools (10% of Labor)				
	Sub-Total for B				
C.	Total (A+B)				
D.	Output Per Day	3.33	sq.m./m-d		

	NAME AND SPECIFICATION				
E.	MATERIALS	QUANTITY	UNIT	UNIT COST	AMOUNT (PhP)
	CHB 4" X 8" X 16"	1313	PCS		
	Portland Cement	55	bags		
	Washed Sand	4.61	cu.m.		
	10mm RSB	65.1552	kg		
	4" Concrete nails	5	kilos		
	Nylon String #80	1	roll		
	Sub-Total for E				
F.	DIRECT UNIT COST (C+E)				
G.	OVERHEAD, CONTINGENCIES AND MISCELLANEOUS (OCM) EXPENSES			15%	
H.	CONTRACTOR'S PROFIT			10%	
I.	VALUE ADDED TAX (VAT)			5%	
J.	TOTAL UNIT COST				
6.0	STRUCTURAL STEEL				
6.1	ROOF TRUSS	4570.012	kg		
	DESIGNATION	NO. OF PERSONS	NO. OF DAYS	DAILY RATE	AMOUNT (PhP)
A.	LABOR				
	Sub-Total for A				
B.	EQUIPMENT				
	1.) WELDING MACHINE	1			
	2.) Minor Tools (10% of Labor)				
	Sub-Total for B				
C.	Total (A+B)				
D.	Output Per Day	0.25	truss/m-d		
	NAME AND SPECIFICATION				
E.	MATERIALS	QUANTITY	UNIT	UNIT COST	AMOUNT (PhP)
	3" DIA. G.I. PIPE SCHED. 40 X 6m	55	PCS		
	2" DIA. G.I. PIPE SCHED. 40 X 6m	42.9	PCS		
	2.5 mm E6013 W ROD	25	kgs.		
	3.2mm E6013 W ROD	25	kgs.		
	12mm ROUND BAR (SAGROD)	18	PCS		
	Falseworks	1	lot		
	Sub-Total for E				
F.	DIRECT UNIT COST (C+E)				
G.	OVERHEAD, CONTINGENCIES AND MISCELLANEOUS (OCM) EXPENSES			15%	
H.	CONTRACTOR'S PROFIT			10%	
I.	VALUE ADDED TAX (VAT)			5%	
J.	TOTAL UNIT COST				
6.2	PURLINS	1015.2	kg		
	DESIGNATION	NO. OF PERSONS	NO. OF DAYS	DAILY RATE	AMOUNT (PhP)
A.	LABOR				

	Sub-Total for A				
B.	EQUIPMENT				
	1.) WELDING MACHINE	1			
	2.) Minor Tools (10% of Labor)				
	Sub-Total for B				
C.	Total (A+B)				
D.	Output Per Day	169.2 kg./m-d			
	NAME AND SPECIFICATION				
E.	MATERIALS	QUANTITY	UNIT	UNIT COST	AMOUNT (PhP)
	2"x4"x1/16" C-Purlins	60	PCS		
	2.5 mm E6013 W ROD	10	kgs.		
	Sub-Total for E				
F.	DIRECT UNIT COST (C+E)				
G.	OVERHEAD, CONTINGENCIES AND MISCELLANEOUS (OCM) EXPENSES			15%	
H.	CONTRACTOR'S PROFIT			10%	
I.	VALUE ADDED TAX (VAT)			5%	
J.	TOTAL UNIT COST				
6.3	STEEL POST	365.68	kg		
	DESIGNATION	NO. OF PERSONS	NO. OF DAYS	DAILY RATE	AMOUNT (PhP)
A.	LABOR				
	Sub-Total for A				
B.	EQUIPMENT				
	1.) WELDING MACHINE	1			
	2.) Minor Tools (10% of Labor)				
	Sub-Total for B				
C.	Total (A+B)				
D.	Output Per Day	1.25 sq.m./m-d			
	NAME AND SPECIFICATION				
E.	MATERIALS	QUANTITY	UNIT	UNIT COST	AMOUNT (PhP)
	4" DIA. G.I. PIPE SCHED. 40 X 6m	3	PCS		
	MS PLATE PRE-CUT .30mx.30m x 18mm	5	SETS		
	16mm ANCHOR BOLTS W/ LEVELING NUTS	44	SETS		
	1/8" 7018 WELDING ROD	25	kgs.		
	Sub-Total for E				
F.	DIRECT UNIT COST (C+E)				
G.	OVERHEAD, CONTINGENCIES AND MISCELLANEOUS (OCM) EXPENSES			15%	
H.	CONTRACTOR'S PROFIT			10%	
I.	VALUE ADDED TAX (VAT)			5%	
J.	TOTAL UNIT COST				
7.0	FINISHING WORKS				
7.1	PLASTERING	339.258	sq.m.		
	DESIGNATION	NO. OF PERSONS	NO. OF DAYS	DAILY RATE	AMOUNT (PhP)

A.	LABOR				
	Sub-Total for A				
B.	EQUIPMENT				
	1.) Minor Tools (10% of Labor)				
	Sub-Total for B				
C.	Total (A+B)				
D.	Output Per Day	1.75			
	NAME AND SPECIFICATION	sq.m./m-d			
E.	MATERIALS	QUANTITY	UNIT	UNIT COST	AMOUNT (Php)
	Portland Cement	108	bags		
	Washed Sand	24.73	cu.m.		
	4" Concrete nails	2	kilo		
	Nylon String #80	1	roll		
	Sub-Total for E				
F.	DIRECT UNIT COST (C+E)				
G.	OVERHEAD, CONTINGENCIES AND MISCELLANEOUS (OCM) EXPENSES			15%	
H.	CONTRACTOR'S PROFIT			10%	
I.	VALUE ADDED TAX (VAT)			5%	
J.	TOTAL UNIT COST				
7.2	PAINTING WORKS	428.31	sq m		
	DESIGNATION	NO. OF PERSONS	NO. OF DAYS	DAILY RATE	AMOUNT (Php)
A.	LABOR				
	Sub-Total for A				
B.	EQUIPMENT				
	1.) Minor Tools (10% of Labor)				
	Sub-Total for B				
C.	Total (A+B)				
D.	Output Per Day	100			
	NAME AND SPECIFICATION	sq.m./m-d			
E.	MATERIALS	QUANTITY	UNIT	UNIT COST	AMOUNT (Php)
	Concrete Neutralizers	5	lit		
	Latex Paint (Flat Wall)	15	gal		
	Latex Paint (Semi Gloss)	25	gal		
	Red Oxide Primer	4	gal		
	Enamel Paint White	7	gal		
	Paint Thinner	14	gal		
	Sub-Total for E				
F.	DIRECT UNIT COST (C+E)				
G.	OVERHEAD, CONTINGENCIES AND MISCELLANEOUS (OCM) EXPENSES			15%	

H.	CONTRACTOR'S PROFIT			10%	
I.	VALUE ADDED TAX (VAT)			5%	
J.	TOTAL UNIT COST				
8.0	DOORS AND DOOR JAMBS				
	DESIGNATION	NO. OF PERSONS	NO. OF DAYS	DAILY RATE	AMOUNT (PhP)
A.	LABOR				
	Sub-Total for A				
B.	EQUIPMENT				
	1.) Minor tools (10% of labor cost)				
	Sub-Total for B				
C.	Total (A+B)				
D.	Output Per Day	1 panel/m-d			
	Door Jamb	2.5 sq.m./m-day			
	NAME AND SPECIFICATION				
E.	MATERIALS	QUANTITY	UNIT	UNIT COST	AMOUNT (PhP)
	0.6x2.1 flush door with lockset, painted	1	set		
	100mm x 100mm Door Hinges	1	pairs		
	Sub-Total for E				
F.	DIRECT UNIT COST (C+E)				
G.	OVERHEAD, CONTINGENCIES AND MISCELLANEOUS (OCM) EXPENSES			15%	
H.	CONTRACTOR'S PROFIT			10%	
I.	VALUE ADDED TAX (VAT)			5%	
J.	TOTAL UNIT COST				
9.0	ELECTRICAL WORKS				
	DESIGNATION	NO. OF PERSONS	NO. OF DAYS	DAILY RATE	AMOUNT (PhP)
A.	LABOR				
	Sub-Total for A			PhP	
B.	EQUIPMENT				
	1.) Minor tools (10% of labor cost)				
	Sub-Total for B			PhP	
C.	Total (A+B)			PhP	
D.	Output Per Day				
	NAME AND SPECIFICATION				
E.	MATERIALS	QUANTITY	UNIT	UNIT COST	AMOUNT (PhP)
	LP (30AT/100AF, 2P, 230V)	1	assy.		
	Branches:				
	1 - 30A, 2P, 230V				
	3 - 20A, 2P, 230V				
	5.5mm ² THHN	6	box		
	3.5mm ² THHN	6	box		
	IMC, 20mm dia.	30	lgts		

	PVC, 20mm dia.	20	lgts		
	Locknut, Bushing, Adapter, 20mm dia.(IMC)	50	set		
	Locknut, Bushing, Adapter, 20mm dia.(PVC)	60	set		
	Utility Box(Metal)	15	pc		
	Junction Box(Metal w/ cover)	25	set		
	PullBox w/ Cover, (300 x 300 x 100)	1	pc		
	Lighting Fixtures(2 x 18W Surface Mounted T8 LED Tube Light w/ Diffuser, Dust Resistant)	8	set		
	Lighting Fixtures(1 x 18W Surface Mounted T8 LED Tube Light w/ Diffuser, Dust Resistant)	1	set		
	Lighting Fixtures(18W LED Downlight)	2	set		
	One Gang Switch	3	set		
	Two-Gang Switch	1	set		
	One Gang Convenience Outlet(3 Prong/Universal)	1	set		
	Two Gang Convenience Outlet(3 Prong/Universal)	4	set		
	Two Gang Weatherproof Convenience Outlet(3 Prong/Universal)	3	set		
	Hangers & Support	1	lot		
	Sub-Total for E				
F.	DIRECT UNIT COST (C+E)				
G.	OVERHEAD, CONTINGENCIES AND MISCELLANEOUS (OCM) EXPENSES			15%	
H.	CONTRACTOR'S PROFIT			10%	
I.	VALUE ADDED TAX (VAT)			5%	
J.	TOTAL UNIT COST			PhP	
10.0	PLUMBING WORKS				
10.1	WATERLINE				
	DESIGNATION	NO. OF PERSONS	NO. OF DAYS	DAILY RATE	AMOUNT (PhP)
A.	LABOR				
	Sub-Total for A				
B.	EQUIPMENT				
	1.) Minor Tools (10% of Labor)				
	Sub-Total for B				
C.	Total (A+B)				
D.	Output Per Day				
	NAME AND SPECIFICATION				
E.	MATERIALS	QUANTITY	UNIT	UNIT COST	AMOUNT (PhP)
	13mmØ Polypropylene Pipes (PPR)	5	pcs		
	13mmØ-Gate Valve	1	pc		
	13mmØ-Check Valve	1	pc		
	Hose Bibb (Faucets)	2	pc		
	13mmØ x 6m G.I Pipe	1	pc		
	13mmØ G.I Pipe Cap	1	pc		
	3/8"Ø G.I Nipple	2	pcs		
	Escutcheon	2	pcs		
	3/8"Ø Angle Valve	2	pcs		
	Flexible Hose	2	pcs		
	Teflon Tape (Large)	2	pcs		
	Sub-Total for E				
F.	DIRECT UNIT COST (C+E)				
G.	OVERHEAD, CONTINGENCIES AND			15%	

	MISCELLANEOUS (OCM) EXPENSES				
H.	CONTRACTOR'S PROFIT			10%	
I.	VALUE ADDED TAX (VAT)			5%	
J.	TOTAL UNIT COST				
10.2	STORM DRAINAGE LINE				
	DESIGNATION	NO. OF PERSONS	NO. OF DAYS	DAILY RATE	AMOUNT (PhP)
A.	LABOR				
	Sub-Total for A				
B.	EQUIPMENT				
	1.) Minor Tools (10% of Labor)				
	Sub-Total for B				
C.	Total (A+B)				
D.	Output Per Day				
	NAME AND SPECIFICATION				
E.	MATERIALS	QUANTITY	UNIT	UNIT COST	AMOUNT (PhP)
	75mmØ-PVC Pipes (Atlanta or Equal)	7	pcs		
	150mmØ-PVC Pipes (Anlanta or Equal)	5	pcs		
	75mmØ-PVC Coupling	5	pcs		
	75mmØ-PVC 90° Elbow	5	pcs		
	Sub-Total for E				
F.	DIRECT UNIT COST (C+E)				
G.	OVERHEAD, CONTINGENCIES AND MISCELLANEOUS (OCM) EXPENSES			15%	
H.	CONTRACTOR'S PROFIT			10%	
I.	VALUE ADDED TAX (VAT)			5%	
J.	TOTAL UNIT COST				
11.0	ROOFING	226	l.m.		
	DESIGNATION	NO. OF PERSONS	NO. OF DAYS	DAILY RATE	AMOUNT (PhP)
A.	LABOR				
	Sub-Total for A				
B.	EQUIPMENT				
	1.) Minor Tools (10% of Labor)				
	Sub-Total for B				
C.	Total (A+B)				
D.	Output Per Day	3			
	NAME AND SPECIFICATION	sq.m./m-d			
E.	MATERIALS	QUANTITY	UNIT	UNIT COST	AMOUNT (PhP)
	.6mm thk Pre Coated Long Span	226	l.m.		
	Tek Screw	2290	pcs		
	.6mm thk Standard Gutter (stainless)	6	pcs		
	.6mm thk Standard Flashing	3	pcs		
	Blind Rivets	200	pcs		

	Sub-Total for E				
F.	DIRECT UNIT COST (C+E)				
G.	OVERHEAD, CONTINGENCIES AND MISCELLANEOUS (OCM) EXPENSES			15%	
H.	CONTRACTOR'S PROFIT			10%	
I.	VALUE ADDED TAX (VAT)			5%	
J.	TOTAL UNIT COST				
12.0	CATCH BASIN (PER PIECE)				
	DESIGNATION	NO. OF PERSONS	NO. OF DAYS	DAILY RATE	AMOUNT (PhP)
A.	LABOR				
	Sub-Total for A				
B.	EQUIPMENT				
	1.)				
	Sub-Total for B				
C.	Total (A+B)				
D.	Output Per Day				
E.	MATERIALS	QUANTITY	UNIT	UNIT COST	AMOUNT (PhP)
	washed sand	0.05	cu.m.		
	4" CHB	16	pcs		
	10mmx6m RSB	6	pcs		
	Gravel 3/4"	0.08	cu.m.		
	Portland Cement	0.32	bags		
	Sub-Total for E				
	NAME AND SPECIFICATION				
F.	DIRECT UNIT COST				
G.	OVERHEAD, CONTINGENCIES AND MISCELLANEOUS (OCM) EXPENSES			15%	
H.	CONTRACTOR'S PROFIT			10%	
I.	VALUE ADDED TAX (VAT)			5%	
J.	TOTAL UNIT COST				
13.0	MISCELLANEOUS WORKS				
13.1	STEEL MATTING				
	DESIGNATION	NO. OF PERSONS	NO. OF DAYS	DAILY RATE	AMOUNT (PhP)
A.	LABOR				
B.	EQUIPMENT				
	1.) Welding Machine	1			
	Sub-Total for B				
C.	Total (A+B)				
D.	Output Per Day				
	NAME AND SPECIFICATION				
E.	MATERIALS	QUANTITY	UNIT	UNIT COST	AMOUNT (PhP)

	1.2m x 2.4m Steel Matting	9	pcs		
	2"Ø x 6m G.I Pipes	6	pcs		
	Welding Rod	15	kgs		
	Sub-Total for E				
F.	DIRECT UNIT COST (C+E)				
G.	OVERHEAD, CONTINGENCIES AND MISCELLANEOUS (OCM) EXPENSES			15%	
H.	CONTRACTOR'S PROFIT			10%	
I.	VALUE ADDED TAX (VAT)			5%	
J.	TOTAL UNIT COST				
13.2	DRAINAGE CHANNEL				
	DESIGNATION	NO. OF PERSONS	NO. OF DAYS	DAILY RATE	AMOUNT (PhP)
A.	LABOR				
	Sub-Total for A				
B.	EQUIPMENT				
	1.) Minor Tools (10% of Labor)				
	2.) Welding Machine	1			
	Sub-Total for B				
C.	Total (A+B)				
D.	Output Per Day	3.33 sq.m./m-day			
	NAME AND SPECIFICATION				
E.	MATERIALS	QUANTITY	UNIT	UNIT COST	AMOUNT (PhP)
	25mmX 25mm X 3mm Angle Bars	3	pcs		
	12mm Square Bars	10	pcs		
	Welding Rod	1	kgs		
	12mmx6m RSB	10	pcs		
	25mmX 25mm X 3mm Angle Bars	9	pcs		
	10mm Square Bars	25	pcs		
	Welding Rod	3	kgs		
	washed sand	0.33	cu.m.		
	Portland Cement	3	bags		
	CHB 4"	170	pcs		
	Sub-Total for E				
F.	DIRECT UNIT COST (C+E)				
G.	OVERHEAD, CONTINGENCIES AND MISCELLANEOUS (OCM) EXPENSES			15%	
H.	CONTRACTOR'S PROFIT			10%	
I.	VALUE ADDED TAX (VAT)			5%	
J.	TOTAL UNIT COST				
13.3	STEEL GRATING				
	DESIGNATION	NO. OF PERSONS	NO. OF DAYS	DAILY RATE	AMOUNT (PhP)
A.	LABOR				

	Sub-Total for A				
B.	EQUIPMENT				
	1.) Minor Tools (10% of Labor)				
	Sub-Total for B				
C.	Total (A+B)				
D.	Output Per Day				
	NAME AND SPECIFICATION				
E.	MATERIALS	QUANTITY	UNIT	UNIT COST	AMOUNT (Php)
	25mmX 25mm X 3mm Angle Bars	3	pcs		
	10mm Square Bars	10	pcs		
	Welding Rod	1	kgs		
	Sub-Total for E				
F.	DIRECT UNIT COST (C+E)				
G.	OVERHEAD, CONTINGENCIES AND MISCELLANEOUS (OCM) EXPENSES			15%	
H.	CONTRACTOR'S PROFIT			10%	
I.	VALUE ADDED TAX (VAT)			5%	
J.	TOTAL UNIT COST				
13.4	GARAGE ELEVATED PLATFORM				
13.4.1	REINFORCED CONCRETE	6.4239	CU.M.		
	DESIGNATION	NO. OF PERSONS	NO. OF DAYS	DAILY RATE	AMOUNT (Php)
A.	LABOR				
	Sub-Total for A				
B.	EQUIPMENT				
	1.) Minor Tools (10% of Labor)				
	2.) Concrete Mixer (One-Bagger)	1			
	Sub-Total for B				
C.	Total (A+B)				
D.	Output Per Day	0.60 cu.m./m-day			
	NAME AND SPECIFICATION				
E.	MATERIALS	QUANTITY	UNIT	UNIT COST	AMOUNT (Php)
	Gravel G3/4	6.4239	cu. m.		
	washed sand	6.4239	cu. m.		
	Portland Cement	68	bags		
	16mmx6m RSB	80	kilos		
	10mmx6m RSB	113	kilos		
	tie wires	10	kilos		
	Sub-Total for E				
F.	DIRECT UNIT COST (C+E)				
G.	OVERHEAD, CONTINGENCIES AND MISCELLANEOUS (OCM) EXPENSES			15%	
H.	CONTRACTOR'S PROFIT			10%	
I.	VALUE ADDED TAX (VAT)			5%	

J.	TOTAL UNIT COST				₱62,070.30
13.4.2	FORMWORKS	11.756	sq.m.		
	DESIGNATION	NO. OF PERSONS	NO. OF DAYS	DAILY RATE	AMOUNT (PhP)
A.	LABOR				
	Sub-Total for A				
B.	EQUIPMENT				
	1.) Minor Tools (10% of Labor)				
	Sub-Total for B				
C.	Total (A+B)				
D.	Output Per Day	3.38 sq.m./m-day			
E.	MATERIALS	QUANTITY	UNIT	UNIT COST	AMOUNT (PhP)
	2"x2"x10' good lumber	63.27	bd ft.		
	3/4" ORDINARY PLYWOOD 4'X8'	3	sht		
	Assorted CW Nails (2", 3", 4", 5")	3	kilos		
	Sub-Total for E				
	NAME AND SPECIFICATION				
F.	DIRECT UNIT COST				
G.	OVERHEAD, CONTINGENCIES AND MISCELLANEOUS (OCM) EXPENSES			15%	
H.	CONTRACTOR'S PROFIT			10%	
I.	VALUE ADDED TAX (VAT)			5%	
J.	TOTAL UNIT COST				
13.5	GARAGE FACILITIES				
A.	MATERIALS	QUANTITY	UNIT	UNIT COST	AMOUNT (PhP)
	Combination Wrench Set 8mm-32 mm	1	set		
	Socket Wrench Set 8mm-32mm	1	set		
	Crocodile Jack (5 tons)	1	unit		
	Air Compressor	1	set		
	Belt Driven Pressure washer 1.5 HP	1	set		
B.	TOTAL UNIT COST				
C.	OVERHEAD, CONTINGENCIES AND MISCELLANEOUS (OCM) EXPENSES			15%	
D.	CONTRACTOR'S PROFIT			10%	
E.	VALUE ADDED TAX (VAT)			5%	
F.	TOTAL UNIT COST				

Section VII. Drawings

- THE ELECTRICAL INSTALLATION HEREIN SHALL BE DONE IN ACCORDANCE WITH PROVISIONS OF THE LATEST EDITION OF THE PHILIPPINE ELECTRICAL CODE, THE LOCAL RULES AND REGULATIONS AND THE REQUIREMENTS OF THE UTILITY COMPANY.
- ALL ELECTRICAL WORKS HEREIN SHALL BE EXECUTED BY EXPERIENCED MEN UNDER THE SUPERVISION OF A DULY REGISTERED ELECTRICAL ENGINEER. WORKS SHALL BE NEATLY PLACED, SECURELY FASTENED AND PROPERLY FINISHED.
- SERVICE ENTRANCE SHALL BE SINGLE - PHASE, TWO - WIRE PLUS GROUND, 230V, 60Hz.
- MATERIALS SHALL BE NEW AND SHALL CONFORM WITH THE PROVISIONS OF THE UNDERWRITERS LABORATORIES INC., IN EVERY CASE WHERE SUCH A STANDARD HAS BEEN ESTABLISHED.
- ALL CONDUITS EMBEDDED IN CONCRETE SHALL BE PVC. CONDUITS FOR POWER SERVICE ENTRANCE SHALL BE GALVANIZED RIGID STEEL CONDUIT.
- ELECTRICAL TRADE SIZE SHALL BE USED, A MINIMUM OF 15mm INSIDE Ø FOR CONDUITS AND IN NO CASE SHALL BE THERE BE MORE THAN THE EQUIVALENT OF FOUR QUARTER BENDS IN ANY ONE RUN.
- CONDUITS SHALL BE PROTECTED AGAINST DAMAGE DURING CONSTRUCTION. ALL ENDS OF CONDUITS SHALL BE PLUGGED TO PREVENT THE ENTRANCE OF WATER, MOISTURE AND FOREIGN MATTER AFTER INSTALLATION.
- SINGLE CONDUCTOR INSULATED THERMOPLASTIC, 600V WIRES SHALL BE USED IN CONDUIT. MINIMUM SIZE OF WIRES SHALL BE 3.5mm² OR 2.0mm² (#12 AWG) 3.5mm² FOR ALL LIGHTING AND POWER SYSTEM.
- UPON COMPLETION OF ELECTRICAL CONSTRUCTION WORK, THE FOLLOWING TESTS SHALL BE PERFORMED BY THE CONTRACTOR INCLUSIVE OF THE OWNER'S REPRESENTATIVE.
 - INSULATION RESISTANCE TEST, 500VDC.
 - OPERATIONAL TEST
- COLOR CODING OF WIRES SHALL BE AS FOLLOWS:

LINE 1 - RED	GROUND - GREEN
LINE 2 - BLACK	NEUTRAL - WHITE
- THE MAXIMUM NUMBER OF CONDUCTORS IN TRADE SIZES OF CONDUITS SHALL BE AS FOLLOWS:

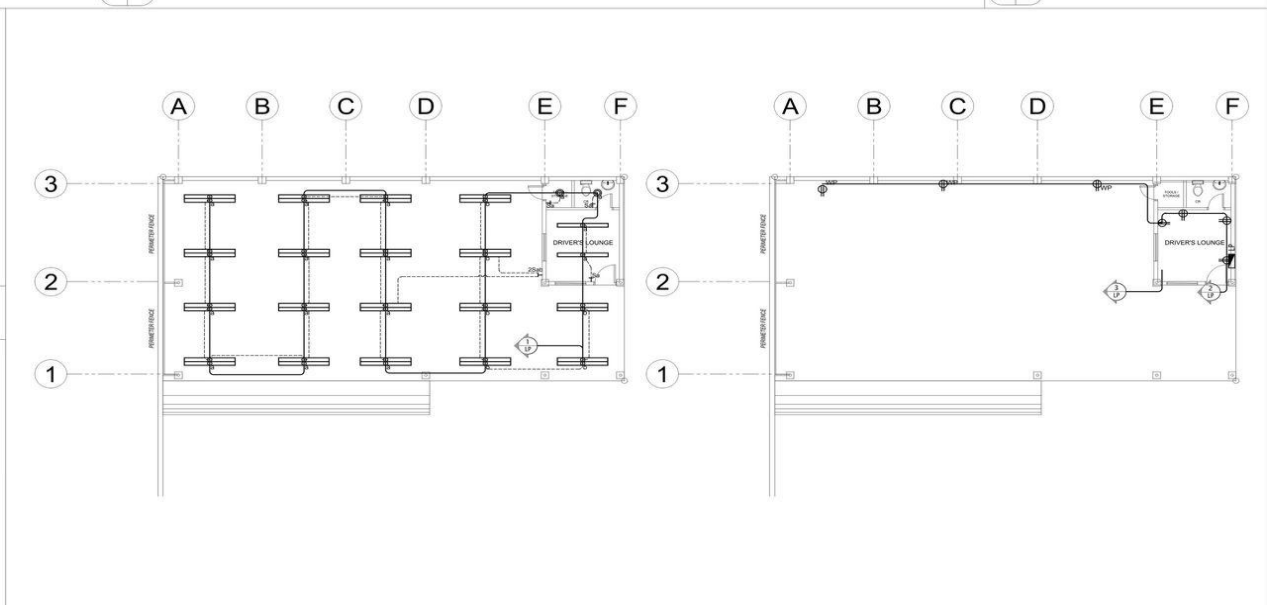
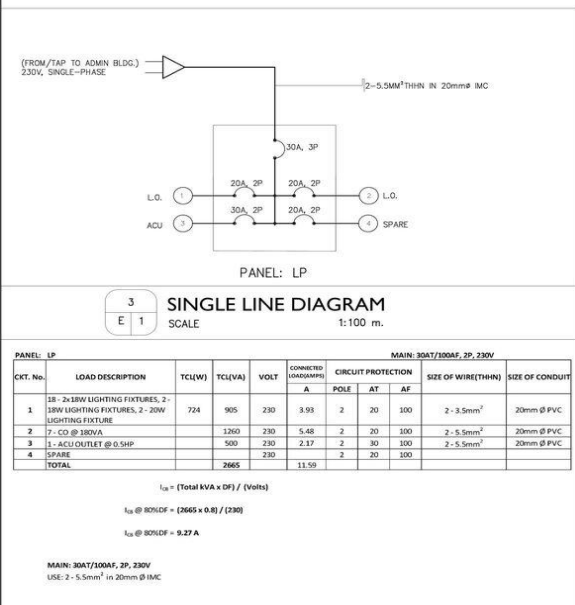
CABLE SIZE	MAXIMUM NUMBER OF CONDUCTORS IN CONDUIT					
	20mm ² PVC	25mm ² PVC	32mm ² PVC	40mm ² PVC	50mm ² PVC	63mm ² PVC
1.6	8	13	24	32		
1.6	2.5	8	13	24	32	
2.0	3.5	8	13	24	32	
2.4	5.5	8	11	19	28	
	8.0	3	5	10	13	
	14	2	4	7	10	
- ALL BRANCH CIRCUIT FEEDERS SHALL BE PROVIDED WITH ADDITIONAL GROUND WIRE IN ACCORDANCE WITH THE PHILIPPINE ELECTRICAL CODE TABLE 2.50.6.1.3 PER 2000 PART 1 VOL. 1 EVEN WHERE IT IS NOT SHOWN ON DRAWING. EQUIPMENT GROUNDING SHALL BE AS SHOWN ON DRAWINGS.
- TRADE CONTRACTORS SHALL PROVIDE CONTROLLERS FOR ELECTRICALLY OPERATED EQUIPMENT E.G. FIRE PROTECTION AND SANITARY SYSTEM AND OTHER SPECIAL SYSTEMS, INCLUDING WIRING FROM CONTROLLER TO THE EQUIPMENT.
- ALL RACEWAYS, WALL AND FLOOR PENETRATIONS SHALL BE PROVIDED WITH FIRE BARRIER OF THE APPROVED TYPE.
- ALL JUNCTION BOXES THAT ARE EXPOSED TO WEATHER SHALL USE WEATHERPROOF EQUIPMENT.
- A REMOVABLE CIRCUIT DIRECTORY SHALL BE PROVIDED FOR EACH PANELBOARD FOR FIELD MARKING OF FUNCTION AND NUMBER OF EACH BRANCH CIRCUIT. ALL DIRECTORIES SHALL BE OF INDELESCIBLE MATERIAL WITH MATCHING CLEAR PLASTIC HOLDER OR JACKET.
- ALL ELECTRICAL CIRCUITS SHALL BE WIRED ACCORDING TO THE PANELBOARD SCHEDULE.
- ALL RECEPTACLE OUTLETS SHALL BE OF GROUNDING TYPE.
- ALL EXIT LIGHTS AND EMERGENCY LIGHTS SHALL BE WIRED AHEAD OF THE FOR SPLICING OF 3.5mm sq WIRES.
- CONNECTION SHALL BE MADE USING 3M SPRING CONNECTORS LOCAL SWITCH.
- PULLBOXES SHALL HAVE DEDICATED BRANCH CIRCUIT RUNS & NOT TO SHARE WITH OTHER CIRCUITS.
- IN CASE OF CONDUIT RUNS THAT HAS MORE THAN FOUR QUARTER BENDS, PROVIDE PULLBOX.

MARK	DESCRIPTION	MARK	DESCRIPTION
□	1000MM (33") Wall Secure Surface Mounted Junction Box	○	Circuit Romex
○	150mm dia recessed panel	○	Circuit Breaker
⊕	18 Watts Wall Lamp Light	⊕	Freezer Hour Meter
⊕	Convenience Outlet	⊕	Freezer Outlet
⊕	Water Proof Outlet	⊕	Emergency Light
⊕	Range Outlet	⊕	18 Watts To Sign LED Light 1.2 meters (40)
⊕	Water pump motor Outlet	⊕	32W Circular LED Lamp
⊕	Air Condition Outlet	⊕	Switch
		⊕	Panel Board

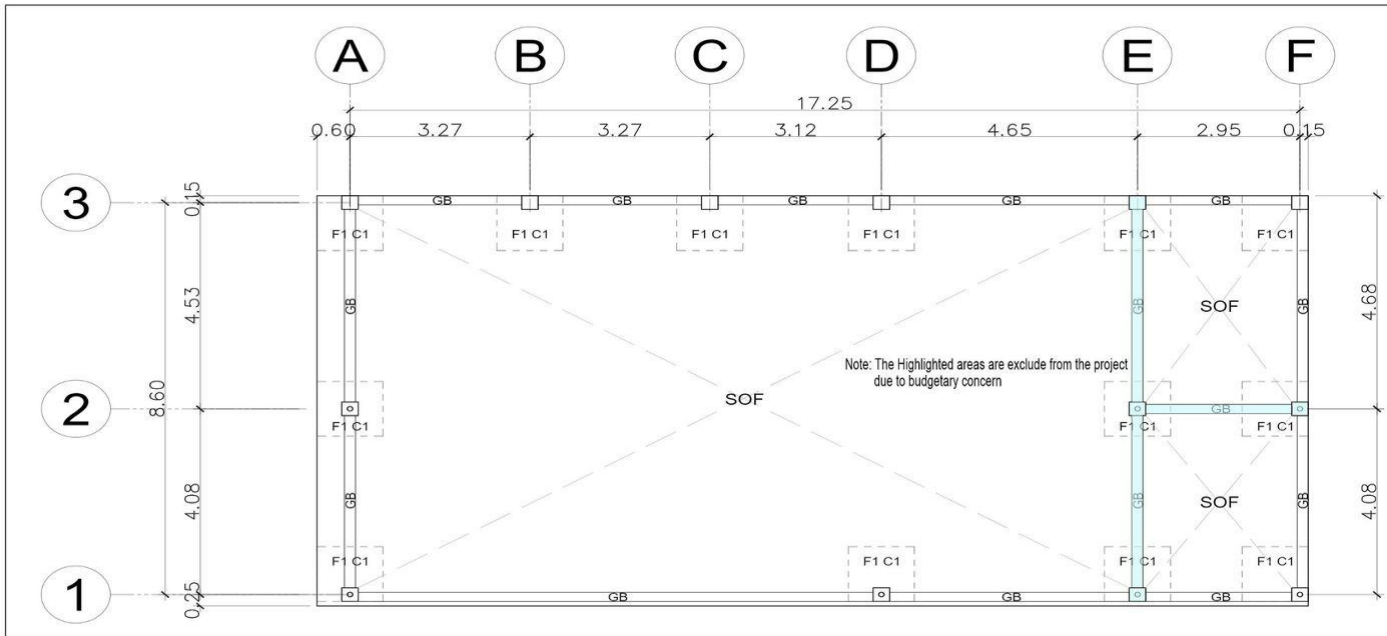
MOUNTING HEIGHTS:	
PANELBOARD	1900mm FROM TOP OF PANEL TO FLOOR FINISH
CONVENIENCE OUTLET	300mm FROM CENTER OF DEVICE TO FLOOR FINISH
RANGE OUTLET	300mm FROM CENTER OF DEVICE TO COUNTER TOP (VERIFY ACTUAL)
WALL SWITCHES, ENCLOSED CIRCUIT BREAKERS	600mm FROM CENTER OF DEVICE TO FLOOR FINISH
SPECIAL PURPOSE OUTLET	1400mm FROM CENTER OF DEVICE TO FLOOR FINISH
EMERGENCY LIGHTING	AS REQUIRED BY THE EQUIPMENT SERVED 0.15M BELOW SLL OR AT A CONVENIENT HEIGHT NEAR THE EQUIPMENT.

1 GENERAL NOTES

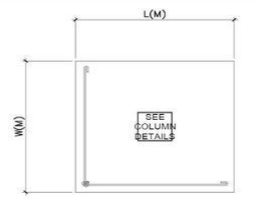
2 ELECTRICAL LEGEND



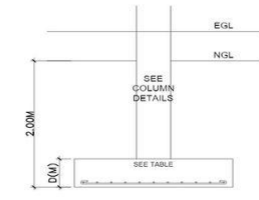
4 LOAD SCHEDULE SCALE 1:100 m.	5 LIGHTING LAYOUT PLAN SCALE 1:100 m.	6 POWER LAYOUT PLAN SCALE 1:100 m.	OWNER:	ELECTRICAL ENGINEER:	PROJECT TITLE:	REVIEWED:	RECOMMENDING APPROVAL:	APPROVED:	APPROVED:	SHEET CONTENTS:	SHEET NO.
			WEST VISAYAS STATE UNIVERSITY LAMBUNAO CAMPUS ADDRESS: WVVSU - LAMBUNAO CAMPUS, LAMBUNAO	FEDERICO D. DACASIN ELECTRICAL ENGINEER PTR. NO.: 2463168 REG. NO.: 0002057 DATE: 01-3-2022 PLACE: QUEZON CITY T.I.N.: 222-164-441	WVVSU - LAMBUNAO CAMPUS GARAGE	ARTHUR G. SABLON Head, Physical Planning Office	DR. JAIME G. LATOZA, Ed.D. Head, Planning Development Office	MARY JOSEPHINE C. BAUTISTA, Ph.D. Campus Administrator	JOSELITO F. VILLARUZ, MD, Ph.D., FPPS SUC PRESIDENT	GENERAL NOTES SINGLE LINE DIAGRAM LOAD SCHEDULE LIGHTING LAYOUT POWER LAYOUT	E-I 01-01



1 FOUNDATION PLAN
S 1 SCALE 1:100 m.



PLAN

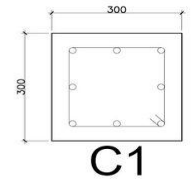


SECTION

DESIG.	BAR DIA	THICKNESS	LENGTH	WIDTH	SPACING OF BARS PARALLEL TO LONG-DIRECTION (BOTTOM)	SPACING OF BARS PARALLEL TO SHORT-DIRECTION (BOTTOM)
F1	D16	0.30	1.200	1.200	200 mm C/C	200 mm C/C

3 SCHEDULE OF FOOTING
S 1 SCALE NTS

DESIG.	@ MIDSPAN	@ SUPPORT	BAR Ø (mm)	AT MIDSPAN		AT SUPPORT	
				TOP BARS	BOT. BARS	TOP BARS	BOT. BARS
GB 200 x 350	2 - 16 mm Ø 	2 - 16 mm Ø 	16	2	2	2	2
RB 200 x 350	2 - 16 mm Ø 	3 - 16 mm Ø 	16	2	3	3	2

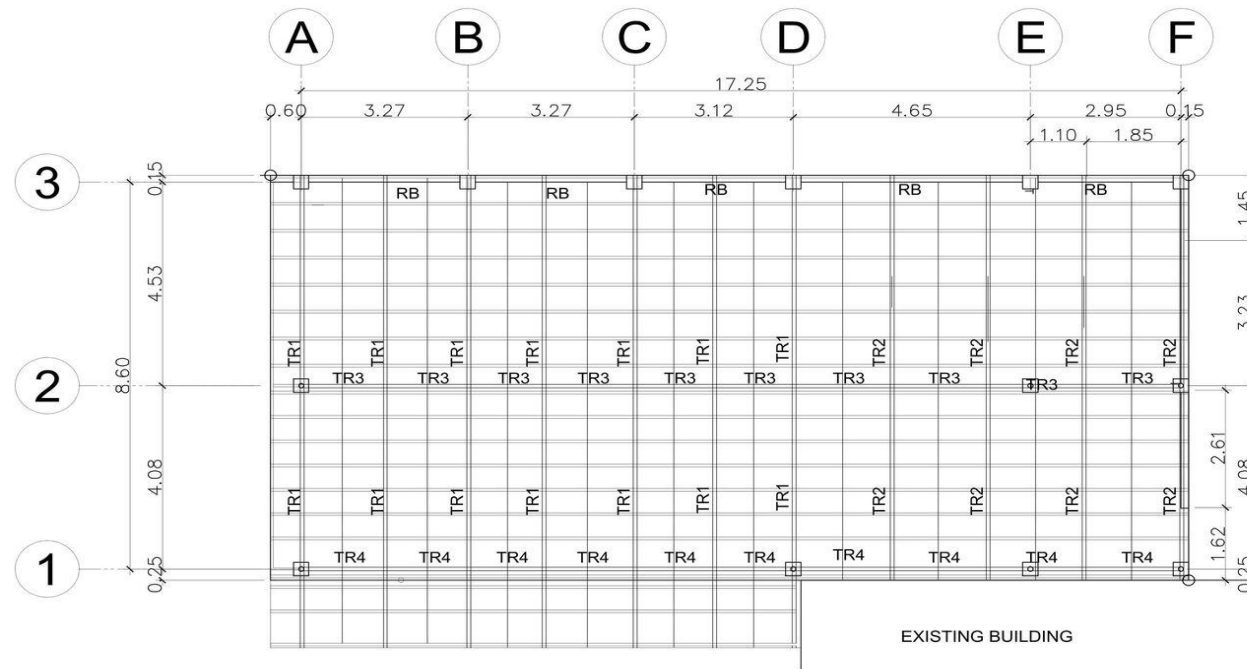


DESIG.	SECTION (mm)	# OF BARS	TIES
C1	300 x 300	8D16	D10mm - 3 @ 50mm, 4 @ 75mm, 4 @ 100mm, REST 150mm

2 SCHEDULE OF BEAMS & DETAILS
S 1 SCALE NTSm

4 SCHEDULE OF COLUMN & DETAILS
S 1 SCALE NTSm

OWNER: ADDRESS: WVSU- LAMBUNAO CAMPUS, LAMBUNAO Contact Number : 0956-766-2678 Email: ferbal_1@yahoo.com.ph	ENGINEER: LOUIS JR. B. CAMAGAN CIVIL ENGINEER PTR NO. : 5408896 REG. NO. : 0153493 DATE : JANUARY 4, 2022 VALIDITY : MAY 17, 2023 PLACE : BAGUIO CITY, PH T.I.N. : 719-076-108	PROJECT TITLE: WVSU - LAMBUNAO CAMPUS GARAGE LOCATION: WVSU- LAMBUNAO CAMPUS, LAMBUNAO	REVIEWED: ARTHUR G. SABLON Head, Physical Planning Office	RECOMMENDING APPROVAL: DR. JAIME G. LATOZA, Ed.D. Head, Planning Development Office	APPROVED: MARY JOSEPHINE C. BAUTISTA, Ph.D. Campus Administrator	SHEET CONTENTS: FOUNDATION PLAN SCHEDULE OF BEAMS & DETAILS SCHEDULE OF FOOTING SCHEDULE OF COLUMN & DETAILS DATE: 26 JAN 2022	SHEET NO. S-I 01-03



1 ROOF FRAMING PLAN
 S 2 SCALE 1:50

OWNER:

 ADDRESS: WVSU- LAMBUNAO CAMPUS, LAMBUNAO

 **Asyana Construction Consultancy**
 Contact Number: 0956-768-2678 | 201, The Levels, Pacific Rim Rd, Filinvest Alabang, Muntinlupa City
 Email: ferbui_1@yahoo.com.ph

ENGINEER
 LOUIS JR. B. CAMANGAN
 CIVIL ENGINEER
 PTR NO.: 5408936 REG. NO.: 0153493
 DATE: JANUARY 4, 2022 VALIDITY: MAY 17, 2023
 PLACE: BAGUIO CITY, PH T.N.: 719-076-108

PROJECT TITLE:
 WVSU - LAMBUNAO CAMPUS GARAGE
 LOCATION: WVSU- LAMBUNAO CAMPUS, LAMBUNAO

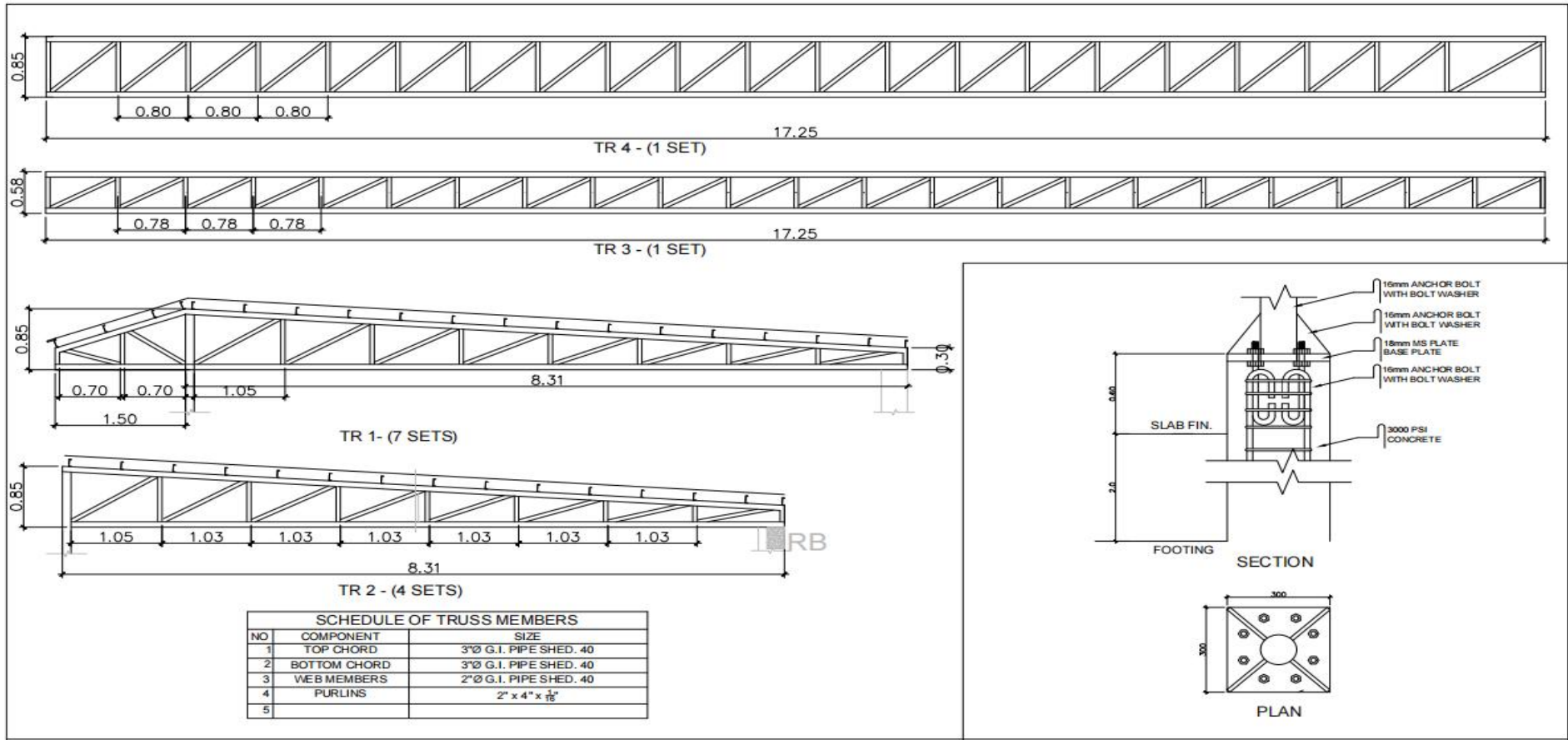
REVIEWED
 ARTHUR G. SABLON
 Head, Physical Planning Office

RECOMMENDING APPROVAL
 DR. JAIME G. LATOZA, Ed.D.
 Head, Planning Development Office

APPROVED
 MARY JOSEPHINE C. BAUTISTA, Ph.D.
 Campus Administrator

SHEET CONTENTS:
 ROOF FRAMING PLAN
 DATE: 26 JAN 2022

SHEET NO.
 S-2
 02-03



1 TRUSS DETAIL
SCALE 1:25

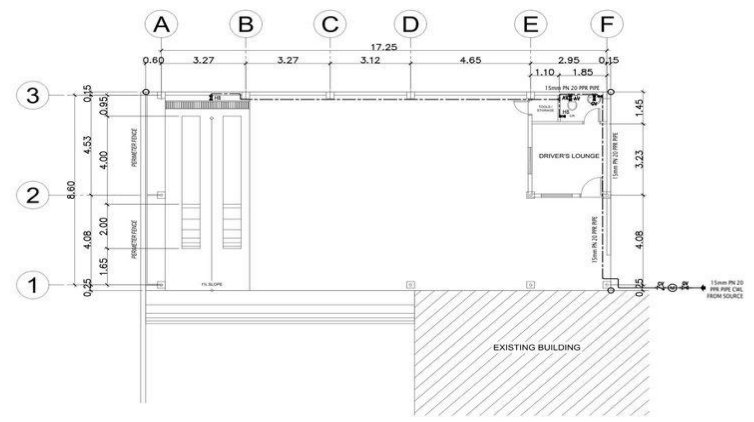
2 CONCRETE PEDESTAL DETAIL
SCALE NTS

OWNER: West Visayas State University Office of the Vice-Chancellor for Planning and Development 201, The Levels, Pacific Rim Rd. Iloilo City, Philippines Contact Number: (035) 766-2678 Email: feraldo_1@yahoo.com.ph ADDRESS: WVSU - LAMBUNAO CAMPUS, LAMBUNAO	 Asyana Construction Consultancy 201, The Levels, Pacific Rim Rd. Iloilo City, Philippines Contact Number: (035) 766-2678 Email: feraldo_1@yahoo.com.ph	ENGINEER: LOUIS JR. B. CAMANGAN CIVIL ENGINEER REG. NO.: 0103463 DATE: JANUARY 4, 2020 VALIDITY: MAY 12, 2023 PLAG: BAGO CITY, PH TAJL: 719-026-108	PROJECT TITLE: WVSU - LAMBUNAO CAMPUS GARAGE LOCATION: WVSU - LAMBUNAO CAMPUS, LAMBUNAO	REVIEWED: ARTHUR G. SABLON Head, Physical Planning Office	RECOMMENDING APPROVAL: DR. JAME G. LATOZA, Ed.D. Head, Planning Development Office	APPROVED: MARY JOSEPHINE C. BAUTISTA, Ph.D. Campus Administrator	SHEET CONTENTS: SUBSIDIARY CONCRETE PEDESTAL DETAIL	SHEET NO.: S-3 03-03
		DATE: 26 JAN 2022						

- ALL PLUMBING WORKS INCLUDED HEREIN SHALL BE EXECUTED IN ACCORDANCE WITH THE PROVISION OF THE PHILIPPINE PLUMBING CODE, THE NATIONAL BUILDING CODE AND THE REGULATION OF LOCALITY.
 - ALL DRAWINGS AND SPECIFICATIONS SHALL BE CAREFULLY REVIEWED BY THE CONTRACTOR AND THE PROJECT MANAGER SHALL IMMEDIATELY BE INFORMED IN CASE OF DISCREPANCY FOUND HEREIN.
 - ALL PLUMBING LAYOUTS ARE ONLY DIAGRAMATIC. ACTUAL LAYOUT OF PIPES AND FITTINGS, UNLESS OTHERWISE REQUIRED, SHALL BE PROPERLY CONCEALED.
 - ALL PIPES SHALL BE INSTALLED AS INDICATED IN THE PLANS. ANY RELOCATION REQUIRED FOR PROPER EXECUTION OF OTHER TRADES SHALL BE WITH PRIOR APPROVAL OF THE PROJECT MANAGER.
 - ALL MAINTENANCE FITTINGS SUCH AS GATE VALVES, BALL VALVES, UNIONS, CLEANOUTS SHALL BE EXPOSED AND ACCESSIBLE. ALL CLEANOUTS SHALL BE FLUSH MOUNTED TO WALL OR FLOOR AS INDICATED IN THE PLANS.
 - NO PIPE SHALL BE EMBEDDED IN STRUCTURAL MEMBERS UNLESS OTHERWISE SPECIFIED OR ALLOWED.
 - INSTALLATION OF WATERLINE SYSTEM AND OTHER EQUIPMENTS SHALL ONLY BE DONE IN ACCORDANCE WITH THE MANUFACTURER'S INSTRUCTIONS AND SPECIFICATIONS.
 - MINIMUM SLOPE FOR SEWER LINES SHALL BE 2% AND THE DRAINAGE LINES SHALL BE 0%
 - ALL FIXTURES SHALL BE INDIVIDUALLY VENTILATED. VENTS THRU EAVES SHALL BE DISCHARGED AT EAVES VENT SLATS. ALL VENT THRU ROOF BE PROVIDED WITH DOWNWARD ELBOWS AND SCREENED.
- ALL WORKS SHALL BE TESTED AND COMMISSIONED AS INDICATED IN THE SPECIFICATIONS PRIOR TO CONCEALING OF PIPES AND SHALL BE CONDUCTED WITH THE PRESENCE OF THE OWNER, THE PROJECT MANAGER, THE CONTRACTOR OR THEIR DULY AUTHORIZED REPRESENTATIVES. RESULTS SHALL PROPERLY BE DOCUMENTED. ALL PLUMBING WORKS SHALL BE DONE UNDER THE DIRECT SUPERVISION OF A DULY LICENSED SANITARY ENGINEER OR MASTER PLUMBER.

ABBR.	DESCRIPTION	BRANCH SIZE
		SP/ DP CWL/HWL
AV	ANGLE VALVE WITH SUPPLY FLEXIBLE PIPE	50mm ϕ
B	BIBET (S-TRAP TYPE)	13mm ϕ
CB	CATCH BASIN	
CO	CLEANOUT (UNILEX U-308 OR EQUAL)	
CV	CHECK VALVE (KITZ OR EQUAL)	
CWL	COLD WATER LINE (PPR PN20)	ALL DIMENSION: INSIDE DIA.
DP	STORM DRAIN PIPE (UPVC, ATLANTA)	ALL DIMENSION: INSIDE DIA.
DS	DOWNSPOUT (UPVC, ATLANTA)	ALL DIMENSION: INSIDE DIA.
F	STAINLESS WALL TYPE KITCHEN FAUCET	75mm ϕ
FD	FLOOR DRAIN (UNILEX U-619 OR EQUAL)	50mm ϕ
GD	GATE VALVE (KITZ OR EQUAL)	13mm ϕ
HB	HOSE BIBB	50mm ϕ
LAV	LAUNDRY TRAY	50mm ϕ
LT	LAUNDRY TRAY	50mm ϕ
SP	SOIL PIPE (UPVC, ATLANTA)	ALL DIMENSION: INSIDE DIA.
VP	VENT PIPE (UPVC, ATLANTA)	50mm ϕ
WC	WATER CLOSET	100mm ϕ

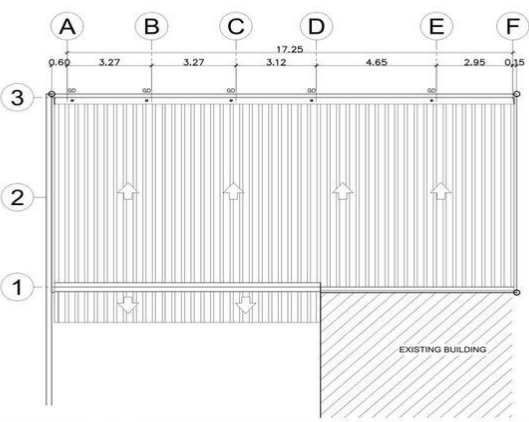
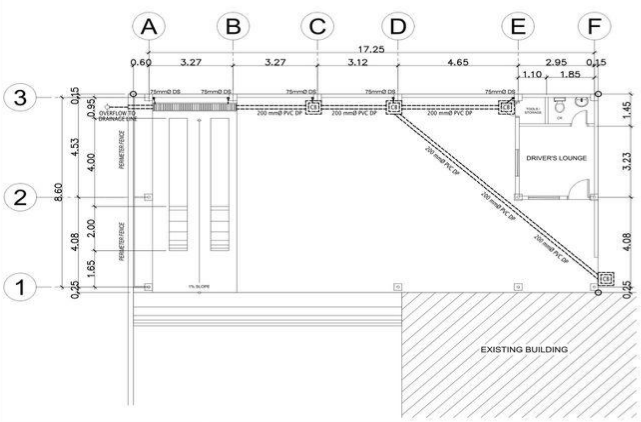
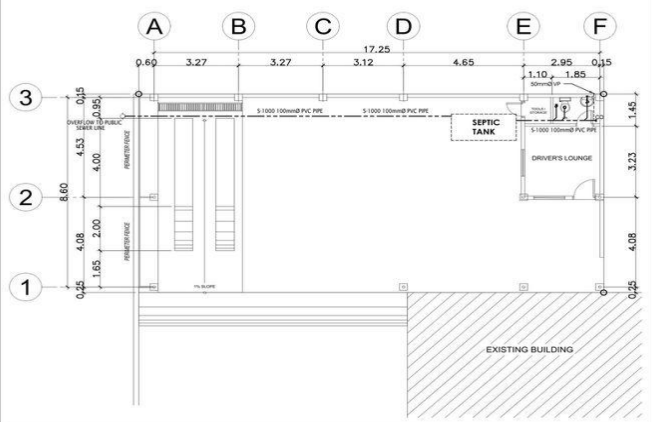
2 ABBREVIATIONS/ BRANCH SIZING	
WATER DEMAND :	SIZE OF SEPTIC TANK :
ASSUME TOTAL NO. OF OCCUPANTS = 2	A. NUMBER OF OCCUPANTS : 2
= 2 PERSONS @ 189.25 ltr/PERSON/DAY	AVERAGE OF SEWAGE FLOW RATE PER PERSON : 189.25 ltr/PERSON/DAY
= 378 cubic meters PER DAY	DAY SEWAGE FLOW RATE PER DAY : 189.25 ltr/PERSON/DAY x 2 PERSONS = 378 ltr/PERSON/DAY
	B. SIZE OF SEPTIC TANK : (378 ltr/DAY x 0.75) + 1,125 ltr
	DIGESTIVE CHAMBER = 1,408 cu. m (MINIMUM)
	LEACHING CHAMBERS = 1 EA. 704 cu. m (MINIMUM)



1 GENERAL NOTES
P 1

3 WASTE GENERATION & WATER DEMAND
P 1

4 GROUND FLOOR WATER LINE LAYOUT
SCALE 1:100 m.
P 1

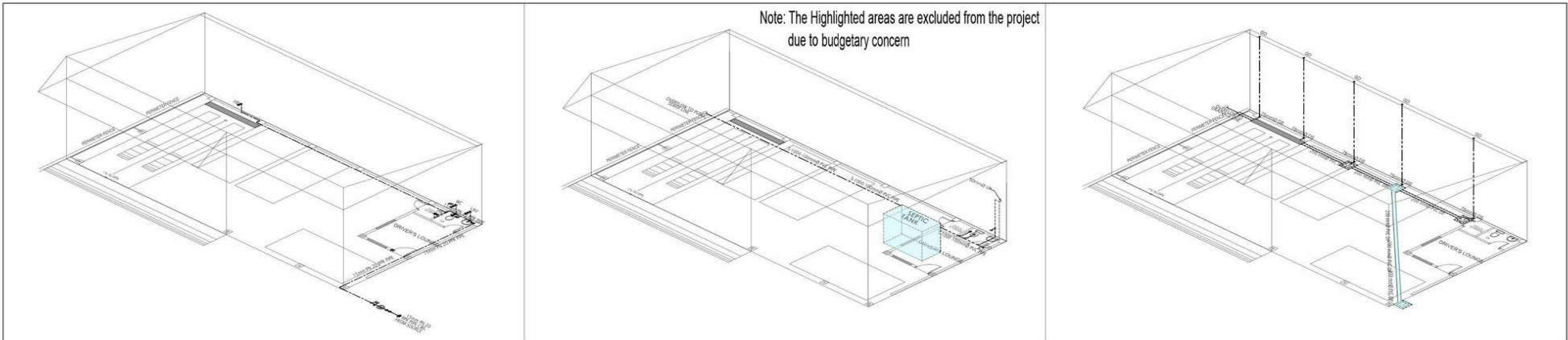


5 GROUND FLOOR SEWER LINE LAYOUT
SCALE 1:100 m.
P 1

6 GROUND FLOOR STORM DRAIN LAYOUT
SCALE 1:100 m.
P 1

7 ROOF STORM DRAIN LAYOUT
SCALE 1:100 m.
P 1

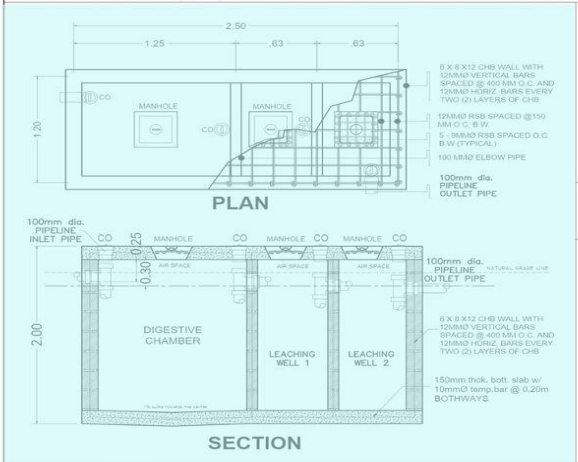
OWNER: Contact Number : 0956-768-2678 Address: WVSU - LAMBUNAO CAMPUS, LAMBUNAO	SANITARY ENGINEER FERNANDO L. BALLASIO SANITARY ENGINEER PTR NO. : 4152393 REG. NO. : 0001730 DATE : JANUARY 17, 2022 PLACE : MUNTINLUPA CITY T.I.N. : 129-576-198	PROJECT TITLE: WVSU - LAMBUNAO CAMPUS GARAGE LOCATION: WVSU - LAMBUNAO CAMPUS, LAMBUNAO	REVIEWED ARTHUR G. SABLON Head, Physical Planning Office	RECOMMENDING APPROVAL DR. JAIME G. LATOZA, Ed.D. Head, Planning Development Office	APPROVED MARY JOSEPHINE C. BAUTISTA, Ph.D. Campus Administrator	APPROVED JOSELITO F. VILLARUZ MD. Ph.D., FPPS SUC PRESIDENT	SHEET CONTENTS: GENERAL NOTES WASTE GENERATION & WATER DEMAND GROUND FLOOR WATER LINE LAY GROUND FLOOR SEWER LINE LAY GROUND FLOOR STORM DRAIN LAY ROOF STORM DRAIN LAYOUT	SHEET NO. P-I 01-02 DATE: 26 JANUARY 2022
---	---	--	---	---	--	--	--	--



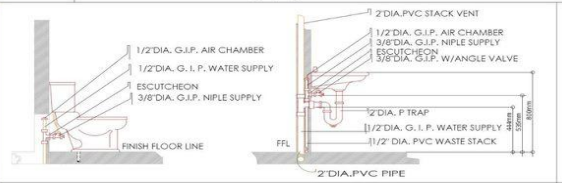
1 WATERLINE ISOMETRIC
SCALE 1:100 m.

2 SEWERLINE ISOMETRIC
SCALE 1:100 m.

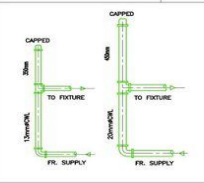
3 STORMDRAIN ISOMETRIC
SCALE 1:100 m.



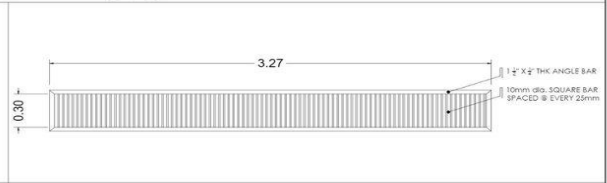
4 SEPTIC TANK DETAIL
SCALE 1:25 m.



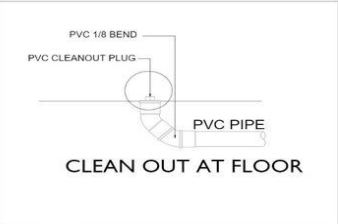
12 WATER CLOSET AND LAVATORY PIPING
SCALE NTS.



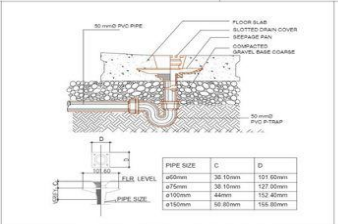
13 AIR CHAMBER DETAIL
SCALE NTS.



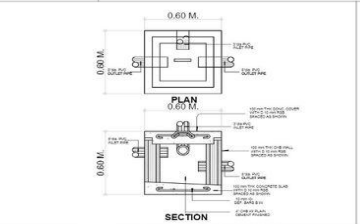
14 STEEL GRATING DETAIL
SCALE 1:20 m.



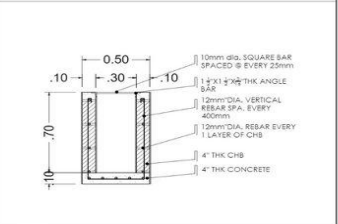
5 CLEAN OUT DETAIL
SCALE NTS.



6 FLOOR DRAIN DETAIL
SCALE NTS.



7 CATCH BASIN DETAIL
SCALE NTS.



8 DRAINAGE CHANNEL DETAIL
SCALE 1:20 m.

OWNER:

 ADDRESS: WVSU- LAMBUNAO CAMPUS, LAMBUNAO

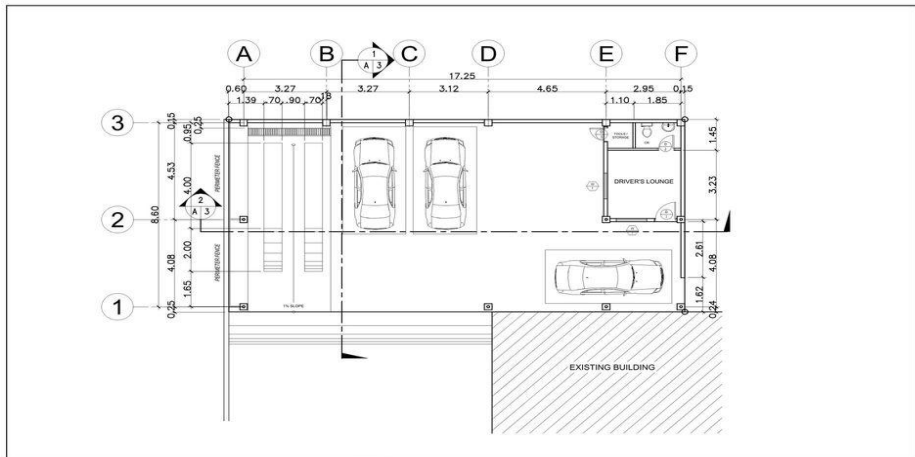
Asyana
CONSTRUCTION & CONSULTANCY
 Contact Number: 0906-788-2078 201, The Levels, Pacific Rim Rd.
 Email: fertal_1@yahoo.com.ph Filinvest Alabang, Muntinlupa City

SANITARY ENGINEER	PROJECT TITLE:
FERNANDO L. BALLASIO SANITARY ENGINEER	WVSU - LAMBUNAO CAMPUS GARAGE
PTR NO. : 4192393	REG. NO. : 0001730
DATE : JANUARY 17, 2022	LOCATION: WVSU- LAMBUNAO CAMPUS, LAMBUNAO
PLACE : MUNTINLUPA CITY	T.J.N. : 129-576-108

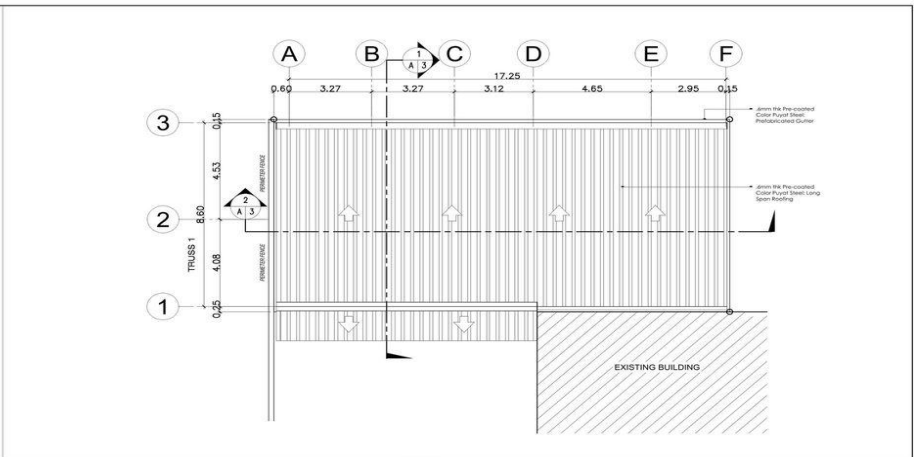
REVIEWED	RECOMMENDING APPROVAL	APPROVED
ARTHUR G. SABLON Head, Physical Planning Office	DR. JAIME G. LATOZA, Ed.D. Head, Planning Development Office	MARY JOSEPHINE C. BAUTISTA, Ph.D. Campus Administrator

APPROVED	SHEET CONTENTS:	SHEET NO.
JOSELITO F. VILLARUZ MD. Ph.D., FPPS SUC PRESIDENT	WATERLINE ISOMETRIC SEWERLINE ISOMETRIC STORMDRAIN ISOMETRIC SEPTIC TANK DETAIL LAVATORY PIPING AIR CHAMBER DETAIL FLOOR DRAIN DETAIL FLOOR CLEANOUT DETAIL CATCH BASIN DETAIL DRAINAGE CHANNEL DETAIL	P-2 02-02

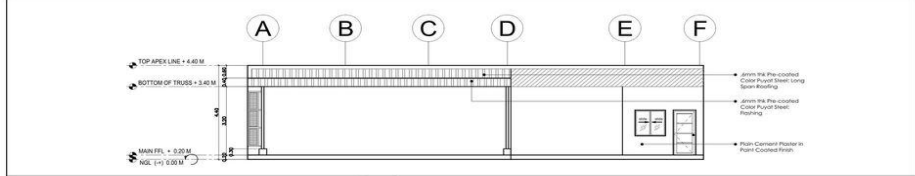
DATE: 26 JANUARY 2022



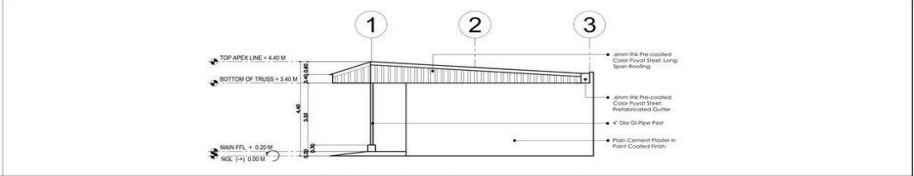
1 FLOOR PLAN
SCALE 1:100 m.



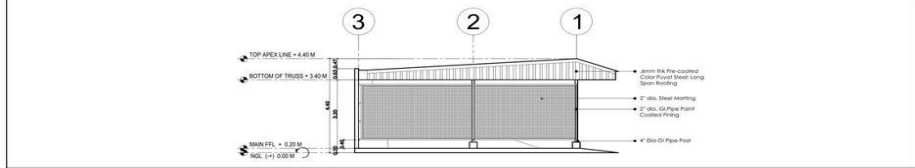
2 ROOF PLAN
SCALE 1:100 m.



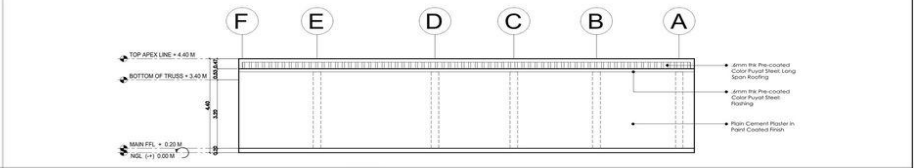
3 FRONT ELEVATION
SCALE 1:100 m.



4 RIGHT SIDE ELEVATION
SCALE 1:100 m.

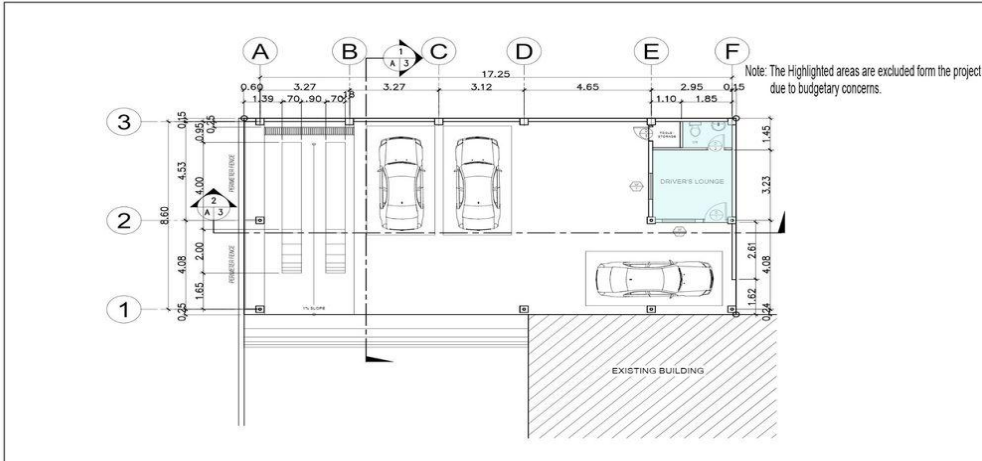


5 LEFT SIDE ELEVATION
SCALE 1:100 m.

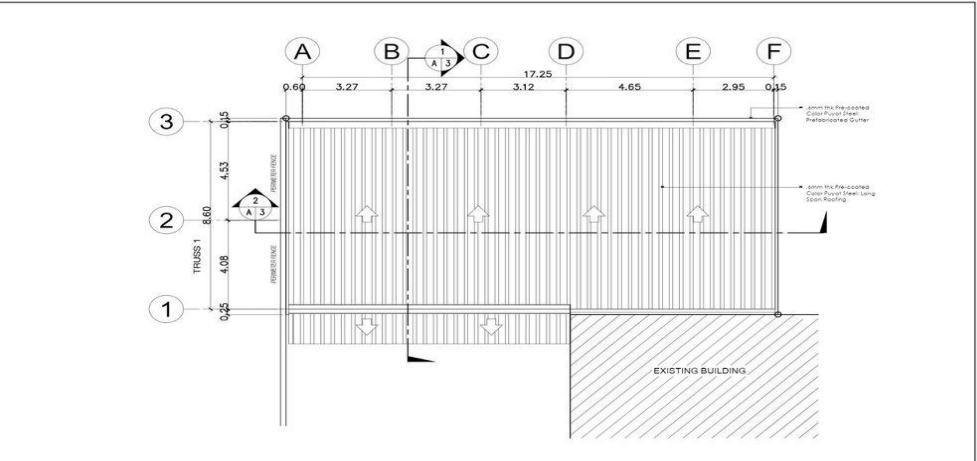


6 REAR ELEVATION
SCALE 1:100 m.

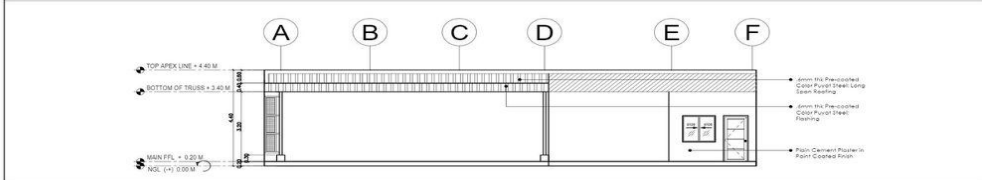
OWNER: ADDRESS: WVSU- LAMBUNAO CAMPUS, LAMBUNAO Contact Number : 0956-768-2678 Email: ferbal_1@yahoo.com.ph	ARCHITECT PAULO A. DOCTOR ARCHITECT	PROJECT TITLE: WVSU - LAMBUNAO CAMPUS GARAGE	REVIEWED ARTHUR G. SABLON	RECOMMENDING APPROVAL DR. JAIME G. LATOZA, Ed.D.	APPROVED MARY JOSEPHINE C. BAUTISTA, Ph.D.	APPROVED JOSELITO F. VILLARUZ MD. Ph.D., FPPS	SHEET CONTENTS: FLOOR PLAN ROOF PLAN FRONT ELEVATION RIGHT SIDE ELEVATION LEFT SIDE ELEVATION REAR ELEVATION	SHEET NO. A-2	
	PTR NO.: 1228612 DATE: JANUARY 21, 2022 PLACE: LAS PINAS CITY	REG. NO.: 0049965 T.I.N.: 722-175-832	LOCATION: WVSU- LAMBUNAO CAMPUS, LAMBUNAO	Head, Physical Planning Office	Head, Planning Development Office	Campus Administrator	SUC PRESIDENT	DATE: 26 JANUARY 2022	02-03
	201, The Levels, Pacific Rim Rd. Filinvest Alabang, Muntinlupa City								
	ADDRESS: WVSU- LAMBUNAO CAMPUS, LAMBUNAO								



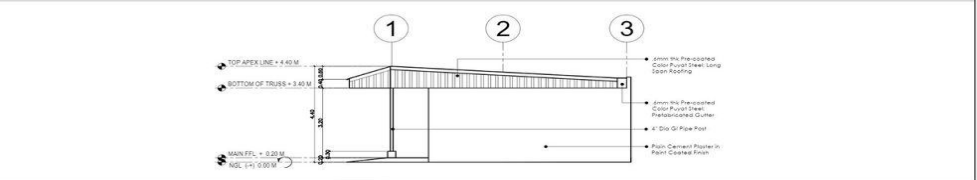
1 FLOOR PLAN
SCALE 1:100 m.



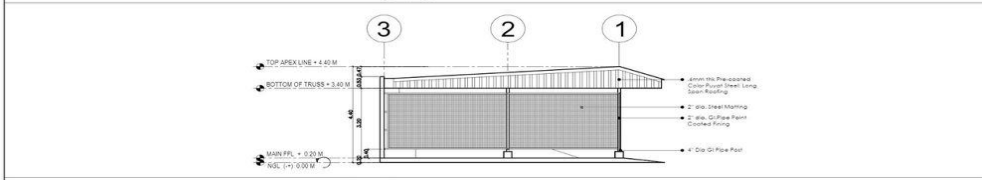
2 ROOF PLAN
SCALE 1:100 m.



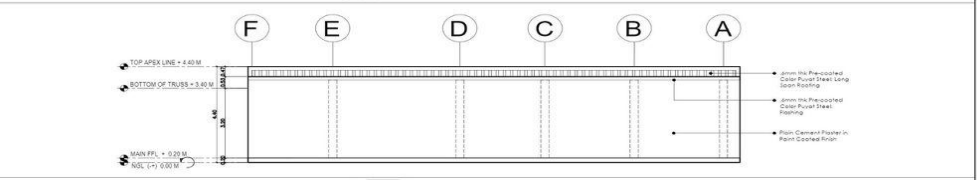
3 FRONT ELEVATION
SCALE 1:100 m.



4 RIGHT SIDE ELEVATION
SCALE 1:100 m.

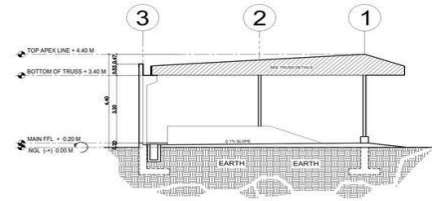


5 LEFT SIDE ELEVATION
SCALE 1:100 m.

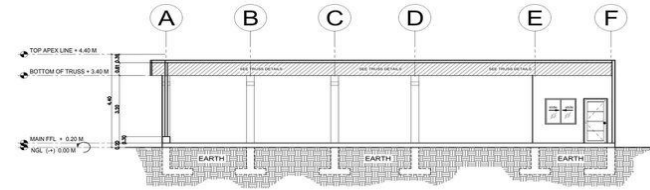


6 REAR ELEVATION
SCALE 1:100 m.

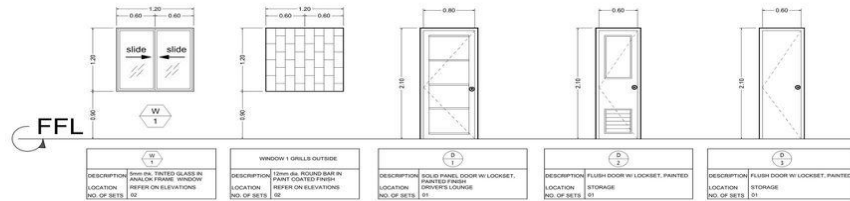
OWNER: ADDRESS: WVVSU- LAMBUNAO CAMPUS, LAMBUNAO	ARCHITECT PAULO A. DOCTOR ARCHITECT PTRN NO.: 12285612 REG. NO.: 0049965 DATE: JANUARY 21, 2022 PLACE: LAS PINAS CITY T.I.N: 722-175-832	PROJECT TITLE: WVSU - LAMBUNAO CAMPUS GARAGE LOCATION: WVVSU- LAMBUNAO CAMPUS, LAMBUNAO	REVIEWED ARTHUR G. SABLON Head, Physical Planning Office	RECOMMENDING APPROVAL DR. JAIME G. LATOZA, Ed.D. Head, Planning Development Office	APPROVED MARY JOSEPHINE C. BAUTISTA, Ph.D. Campus Administrator	APPROVED JOSELITO F. VILLARUZ MD, Ph.D., FPPS SUC PRESIDENT	SHEET CONTENTS: FLOOR PLAN ROOF PLAN FRONT ELEVATION RIGHT SIDE ELEVATION LEFT SIDE ELEVATION REAR ELEVATION	SHEET NO. A-2 02-03 DATE: 26 JANUARY 2022
			CONTACT NUMBER: 0956-768-2678 Email: foibal_1@ayathoo.com.ph 201, The Levels, Pacific Rim Rd. Filinvest Alabang, Muntinlupa City					



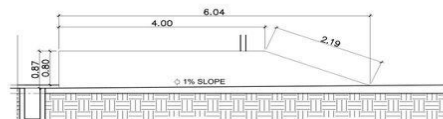
1 CROSS SECTION
SCALE 1:100 m.



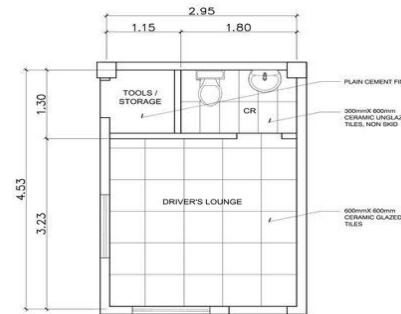
2 LONGITUDINAL SECTION
SCALE 1:100 m.



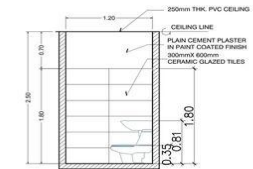
3 SCHEDULE OF DOORS & WINDOWS
SCALE 1:40 m.



4 GARAGE ELEVATED PLATFORM
SCALE 1:50 m.



5 FLOOR FINISH BLOW-UP PLAN
SCALE 1:50 m.



COMFORT ROOM SECTION

6 CR WALL FINISH
SCALE 1:40 m.

OWNER:
West Visayas State University
Lambunao Campus
Lambunao, Iloilo City
ADDRESS: WVU- LAMBUNAO CAMPUS, LAMBUNAO

Asyana
CONSTRUCTION & CONSULTANCY
Contact Number: 0956-788-2678
Email: ferbal_1@yahoo.com.ph
201, The Levels, Pacific Rim Rd.
Filinvest Alabang, Muntinlupa City

ARCHITECT
PAULO A. DOCTOR
ARCHITECT
PTR NO.: 12285612 REG. NO.: 0049965
DATE: 1 JANUARY 21, 2022
PLACE: LAS PINAS CITY T.I.N.: 722-175-832

PROJECT TITLE:
WVU- LAMBUNAO CAMPUS GARAGE
LOCATION: WVU- LAMBUNAO CAMPUS, LAMBUNAO

REVIEWED
ARTHUR G. SABLON
Head, Physical Planning Office

RECOMMENDING APPROVAL
DR. JAIME G. LATOZA, Ed.D.
Head, Planning Development Office

APPROVED
MARY JOSEPHINE C. BAUTISTA, Ph.D.
Campus Administrator

APPROVED
JOSELITO F. VILLARUZ, MD, Ph.D., FPPS
SUC PRESIDENT

SHEET CONTENTS:
CROSS SECTION
LONGITUDINAL SECTION
SCHEDULE OF DOORS & WINDOWS
GARAGE ELEVATED PLATFORM
FLOOR FINISH BLOW-UP PLAN
CR WALL FINISH
DATE: 26 JANUARY 2022

SHEET NO.
A-3
03-03

Section VIII. Bill of Quantities

Section VIII. Bill of Quantities

Project Title : **Construction of WVSU-Lambunao Campus
Motorpool/Garage**
 Location : **West Visayas State University Lambunao Campus,
Lambunao, Iloilo**
 Appropriation: **₱2,254,500.62**
 Classification: **By Contract**
 Calendar days: **60**

ITEM	DESCRIPTION	% of Total	Quantity	UNIT	Direct Cost		Total Cost	
					Unit Cost	Total Cost	Unit Cost	Total Cost
1.0	GENERAL REQUIREMENTS							
1.1	Mobilization and Demobilization	0.68%	1	lot				
1.2	Temporary Facilities (bunkhouse, warehouse, etc.)	1.42%	1	lot				
1.3	Building Occupancy and Permits	0.67%	1	lot				
2.0	SITWORKS							
2.1	Layout and Staking	0.30%	1	lot				
2.2	Earthworks							
2.2.1	Excavation	2.35%	59	cu. m.				
2.2.2	Backfill and Compaction	1.08%	43	cu. m.				
2.2.3	Gravel Bedding	0.57%	5	cu. m.				

3.0	STRUCTURAL CONCRETE							
3.1	Grade Beams	1.77%	4.87	cu. m.				
3.2	Foundations	1.74%	4.99	cu. m.				
3.3	Columns	1.59%	4.24	cu. m.				
3.4	Floor Slab	11.03%	32.64	cu. m.				
3.5	Roof Beam	0.57%	1.25	cu. m.				
3.6	Formworks	3.82%	110.10	sq. m.				
4.0	REINFORCING STEEL (DEFORMED) WORKS							
4.1	Grade Beam	1.43%	116.64	kg				
4.2	Roof Beam	1.18%	45.16	kg				
4.3	Foundations	1.32%	131.14	kg				
4.4	Floor Slab	1.73%	148.70	kg				
4.5	Columns	1.86%	210.88	kg				
5.0	MASONRY WORK							
5.1	CHB non-load bearing 2/ reinforcement steel	3.50%	95.45	sq. m.				
6.0	STRUCTURAL STEEL							
6.1	Roof Truss	16.55%	4570.01	kg				
6.2	Purlins	2.70%	1015.2	kg				

6.3	Steel Post	1.92%	365.68	kg				
7.0	FINISHING WORK							
7.1	Plastering	7.96%	339.26	sq. m.				
7.2	Painting Works	3.68%	428.31	sq. m.				
8.0	Doors	0.19%	1	lot				
9.0	Electrical Works	7.35%	1	lot				
10.0	Plumbing Works	1.75%	1	lot				
11.0	Roofing	8.87%	226	l. m.				
12.0	Catch Basin	0.48%	2	units				
13.0	Miscellaneous Works	9.96%	1	lot				
TOTAL		100.00%						

Name & Signature of Bidder/Bidder Representative: _____

Name & Signature of Bidder/Bidder Representative: _____

Section IX. Checklist of Technical and Financial Documents

Checklist of Technical and Financial Documents

I. TECHNICAL COMPONENT ENVELOPE

Class “A” Documents

Legal Documents

- (a) Valid PhilGEPS Registration Certificate (Platinum Membership) (all pages);
or
- (b) Registration certificate from Securities and Exchange Commission (SEC), Department of Trade and Industry (DTI) for sole proprietorship, or Cooperative Development Authority (CDA) for cooperatives or its equivalent document;
and
- (c) Mayor’s or Business permit issued by the city or municipality where the principal place of business of the prospective bidder is located, or the equivalent document for Exclusive Economic Zones or Areas;
and
- (e) Tax clearance per E.O. No. 398, s. 2005, as finally reviewed and approved by the Bureau of Internal Revenue (BIR).

Technical Documents

- (f) Statement of the prospective bidder of all its ongoing government and private contracts, including contracts awarded but not yet started, if any, whether similar or not similar in nature and complexity to the contract to be bid; **and**
- (g) Statement of the bidder’s Single Largest Completed Contract (SLCC) similar to the contract to be bid, except under conditions provided under the rules; **and**
- (h) Philippine Contractors Accreditation Board (PCAB) License;
or
Special PCAB License in case of Joint Ventures;
and registration for the type and cost of the contract to be bid; **and**
- (i) Original copy of Bid Security. If in the form of a Surety Bond, submit also a certification issued by the Insurance Commission;
or
Original copy of Notarized Bid Securing Declaration; **and**
- (j) Project Requirements, which shall include the following:
 - a. Organizational chart for the contract to be bid;
 - b. List of contractor’s key personnel (*e.g.*, Project Manager, Project Engineers, Materials Engineers, and Foremen), to be assigned to the contract to be bid, with their complete qualification and experience data;
 - c. List of contractor’s major equipment units, which are owned, leased, and/or under purchase agreements, supported by proof of ownership

- or certification of availability of equipment from the equipment lessor/vendor for the duration of the project, as the case may be; **and**
- (k) Original duly signed Omnibus Sworn Statement (OSS);
 - and** if applicable, Original Notarized Secretary's Certificate in case of a corporation, partnership, or cooperative; or Original Special Power of Attorney of all members of the joint venture giving full power and authority to its officer to sign the OSS and do acts to represent the Bidder.

Financial Documents

- (l) The prospective bidder's audited financial statements, showing, among others, the prospective bidder's total and current assets and liabilities, stamped "received" by the BIR or its duly accredited and authorized institutions, for the preceding calendar year which should not be earlier than two (2) years from the date of bid submission; **and**
- (m) The prospective bidder's computation of Net Financial Contracting Capacity (NFCC).

Class "B" Documents

- (n) If applicable, duly signed joint venture agreement (JVA) in accordance with RA No. 4566 and its IRR in case the joint venture is already in existence; **or** duly notarized statements from all the potential joint venture partners stating that they will enter into and abide by the provisions of the JVA in the instance that the bid is successful.

II. FINANCIAL COMPONENT ENVELOPE

- (o) Original of duly signed and accomplished Financial Bid Form; **and**

Other documentary requirements under RA No. 9184

- (p) Original of duly signed Bid Prices in the Bill of Quantities; **and**
- (q) Duly accomplished Detailed Estimates Form, including a summary sheet indicating the unit prices of construction materials, labor rates, and equipment rentals used in coming up with the Bid; **and**
- (r) Cash Flow by Quarter.

