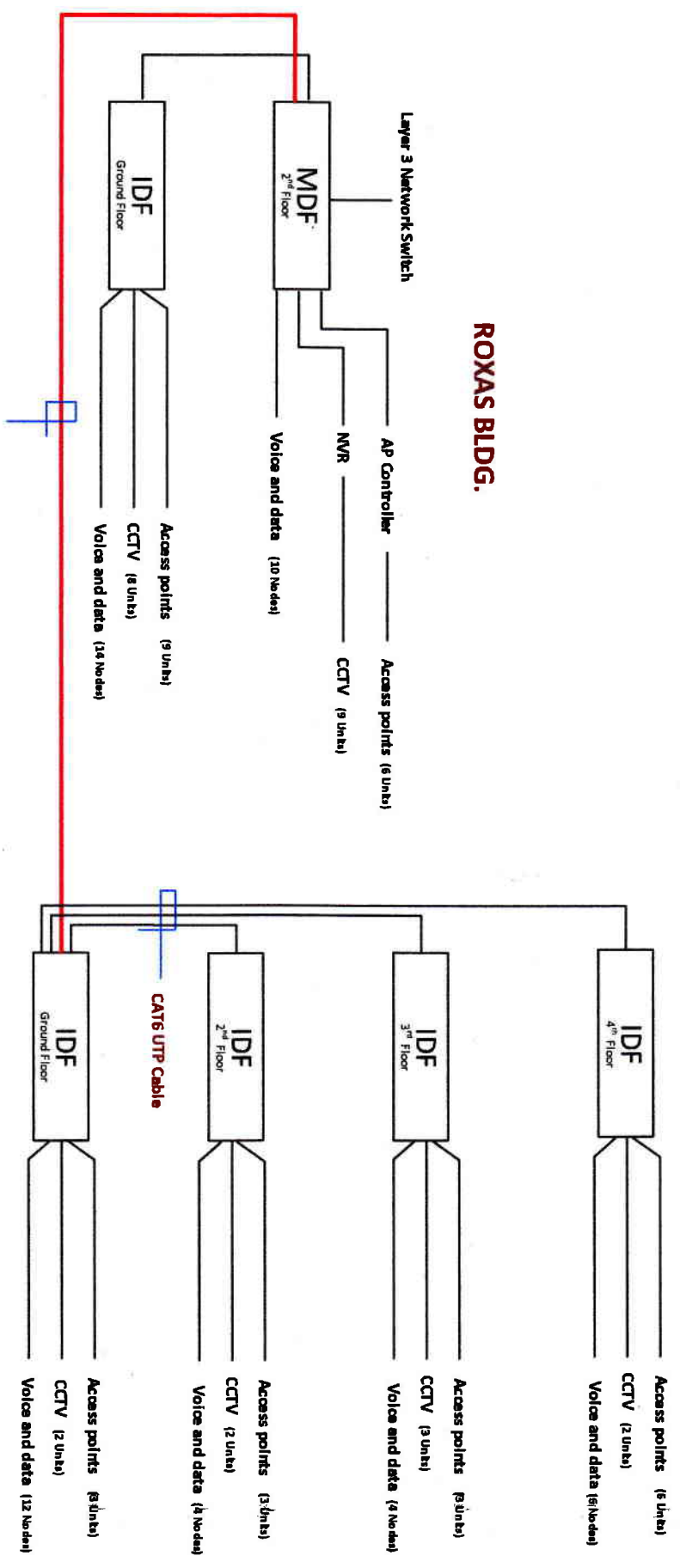


**ANNEX BLDG.**



**ROXAS BLDG.**

**Proposed Single Line Diagram**



**West Visayas State University**  
 Luna St. La Paz Iloilo City, Philippines 5000  
**MANAGEMENT INFORMATION SYSTEMS OFFICE**  
 Tel. No. 033-320870 local 1153 URL: www.wvsu.edu.ph Email: mso@wvsu.edu.ph

**COLLEGE OF MEDICINE IT INFRA**  
 PROJECT TITLE

**DRAFTED BY:**  
 ELLY JUNA A. TOPE  
 Network Administrator

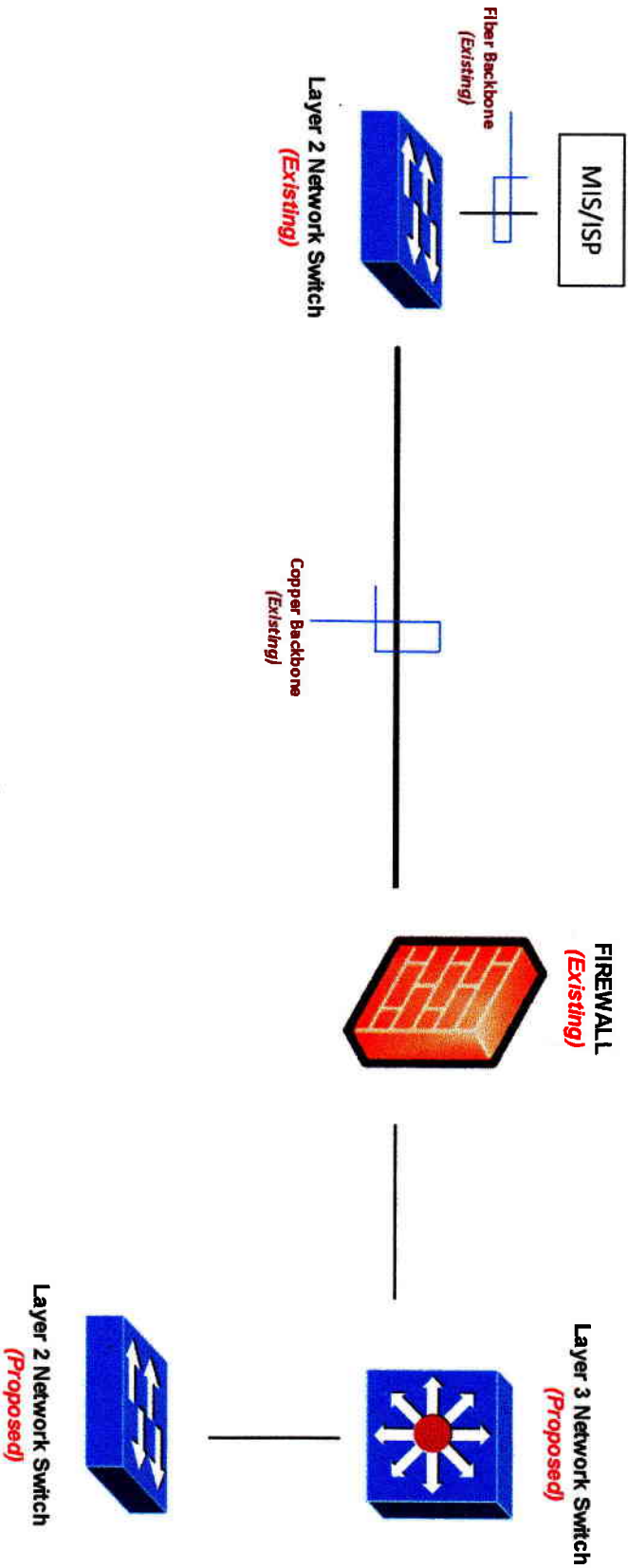
**NOTED BY:**  
 LOUIE F. CERVANTES  
 MIS Director

**ACCEPTED BY:**  
 JOSE A. CRIVANON  
 DEAN, COLLEGE OF MEDICINE

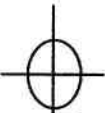
**REV: 01**  
**DATE:**  
**18**

**ADMIN BLDG.**

**ROXAS BLDG.**



Proposed Network Single Line Diagram



**West Visayas State University**  
Luna St. La Paz Jiloto City, Philippines 5000  
**MANAGEMENT INFORMATION SYSTEMS OFFICE**  
Tel. No. 035-3200970 local 1783 URL: www.wvstate.edu.ph E-mail: mso@wvstate.edu.ph

**COLLEGE OF MEDICINE IT INFRA**

PROJECT TITLE

DRAFTED BY:

*[Signature]*  
**EATY JUN A. TOPE**  
Network Administrator

NOTED BY:

*[Signature]*  
**LDWIE E. DERVANTES**  
MIS Director

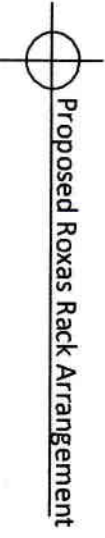
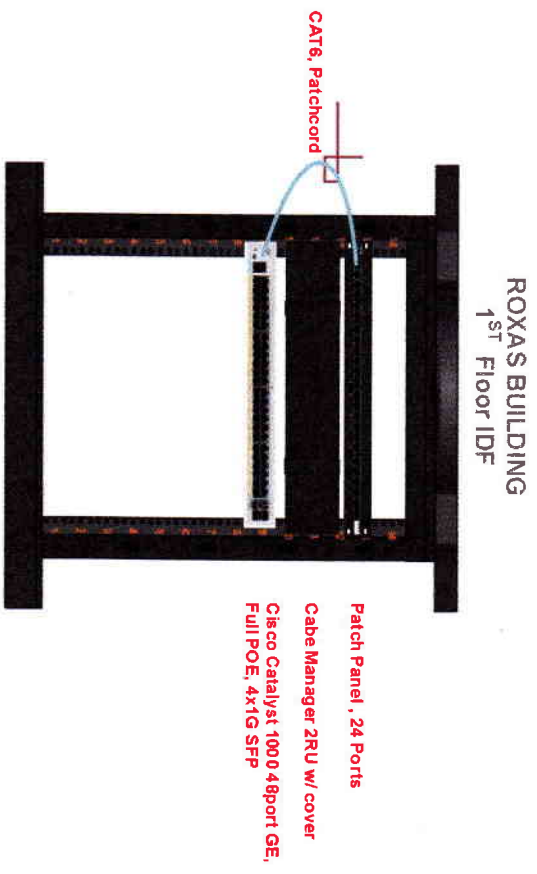
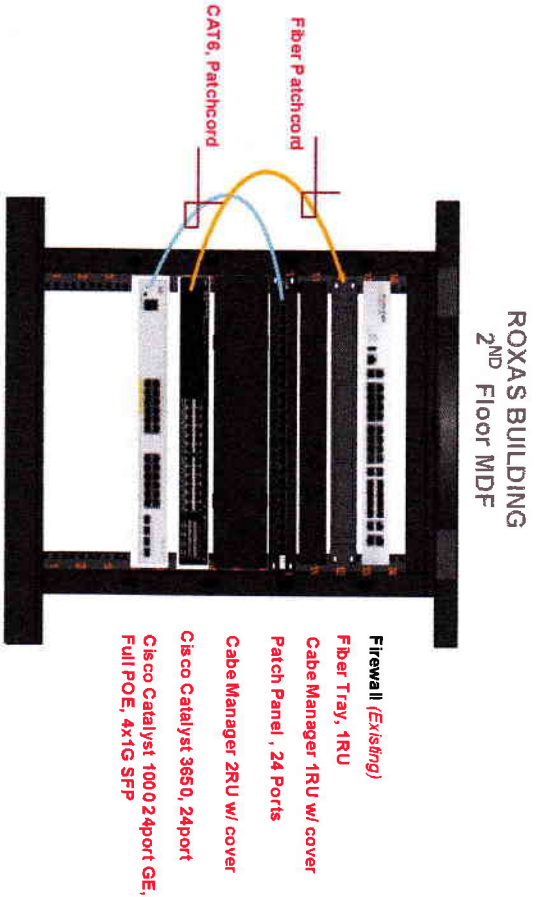
ACCEPTED BY:

*[Signature]*  
**JOSEPHINE P. GARCIA, Ph.D.**  
Dean, College of Medicine

REV: 01

DATE:

**A**  
NOT TO SCALE



**West Visayas State University**  
Luna St. La Paz Ialilo City, Philippines 5000  
**MANAGEMENT INFORMATION SYSTEMS OFFICE**  
Tel. No. 035-3200970 loc. #1153 URL: www.wvsu.edu.ph E-mail: msi@wvsu.edu.ph

**COLLEGE OF MEDICINE IT INFRA**  
PROJECT TITLE

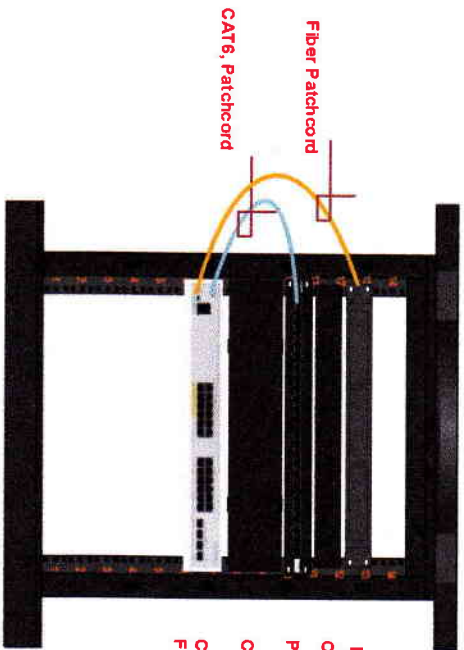
DRAFTED BY:  
*[Signature]*  
**ELIY JUN A. TOPE**  
Network Administrator

NOTED BY:  
*[Signature]*  
**LOUIE F. CERVANTES**  
MIS Director

ACCEPTED BY:  
*[Signature]*  
**JOSE MARINO A. GIMAWAN, MD, PhD**  
DEAN, COLLEGE OF MEDICINE

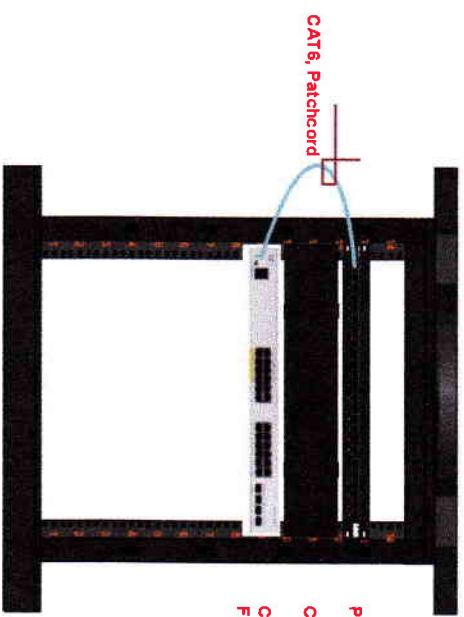
REV: 01  
DATE: **A**  
NOT TO SCALE  
3 / 18

**ANNEX BUILDING**  
1<sup>st</sup> Floor MDF



- Fiber Tray, 1RU
- Cabe Manager 1RU w/ cover
- Patch Panel, 24 Ports
- Cabe Manager 2RU w/ cover
- Cisco Catalyst 1000 24port GE, Full POE, 4x1G SFP

**ANNEX BUILDING**  
2<sup>nd</sup>, 3<sup>rd</sup> & 4<sup>th</sup> Floors IDF



- Patch Panel, 24 Ports
- Cabe Manager 2RU w/ cover
- Cisco Catalyst 1000 24port GE, Full POE, 4x1G SFP

 Proposed Annex Rack Arrangement



**West Visayas State University**  
Luna St. La Paz Iliado City, Philippines 5000  
**MANAGEMENT INFORMATION SYSTEMS OFFICE**  
Tel. No. 035-320870 local 1153 URL: www.wvsu.edu.ph Email: mi@wvsu.edu.ph

**COLLEGE OF MEDICINE IT INFRA**

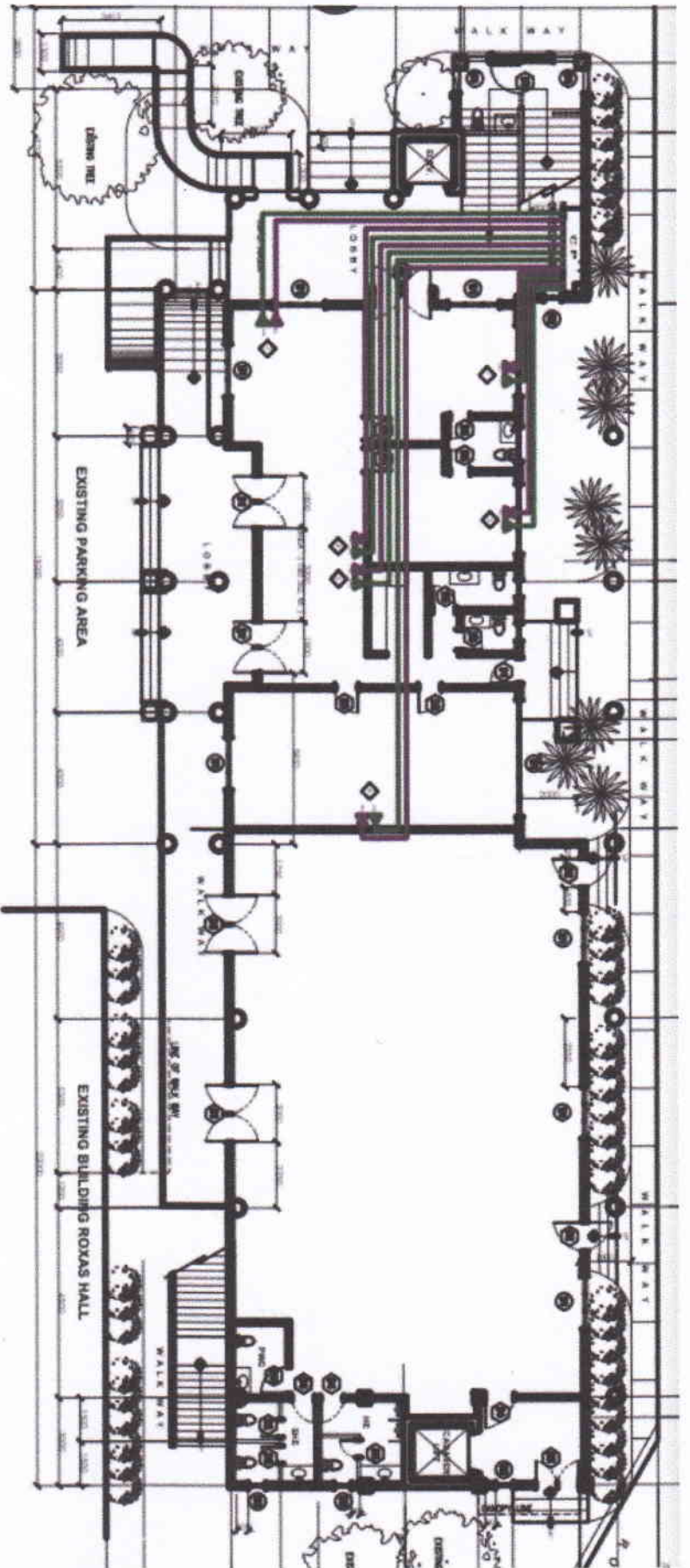
PROJECT TITLE

DRAFTED BY:  
*[Signature]*  
**ELLY LUNA, TOPE**  
Network Administrator

NOTED BY:  
*[Signature]*  
**JOIE F. CERVANTES**  
MIS Director

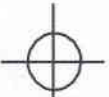
ACCEPTED BY:  
*[Signature]*  
**JOE REYNOLDO A. CERVANTES, JR.**  
DEAN, COLLEGE OF MEDICINE

REV.: 01  
DATE: **A**  
NOT TO SCALE: **4** / **18**



## Annex Nodes- Ground Flr

Proposed Annex DATA Distribution



**West Visayas State University**  
 Luna St. La Paz Iloilo City, Philippines 5000  
**MANAGEMENT INFORMATION SYSTEMS OFFICE**  
 Tel. No. 033-3288970 local 1183 URL: www.wvsu.edu.ph Email: mso@wvsu.edu.ph

**COLLEGE OF MEDICINE IT INFRA**

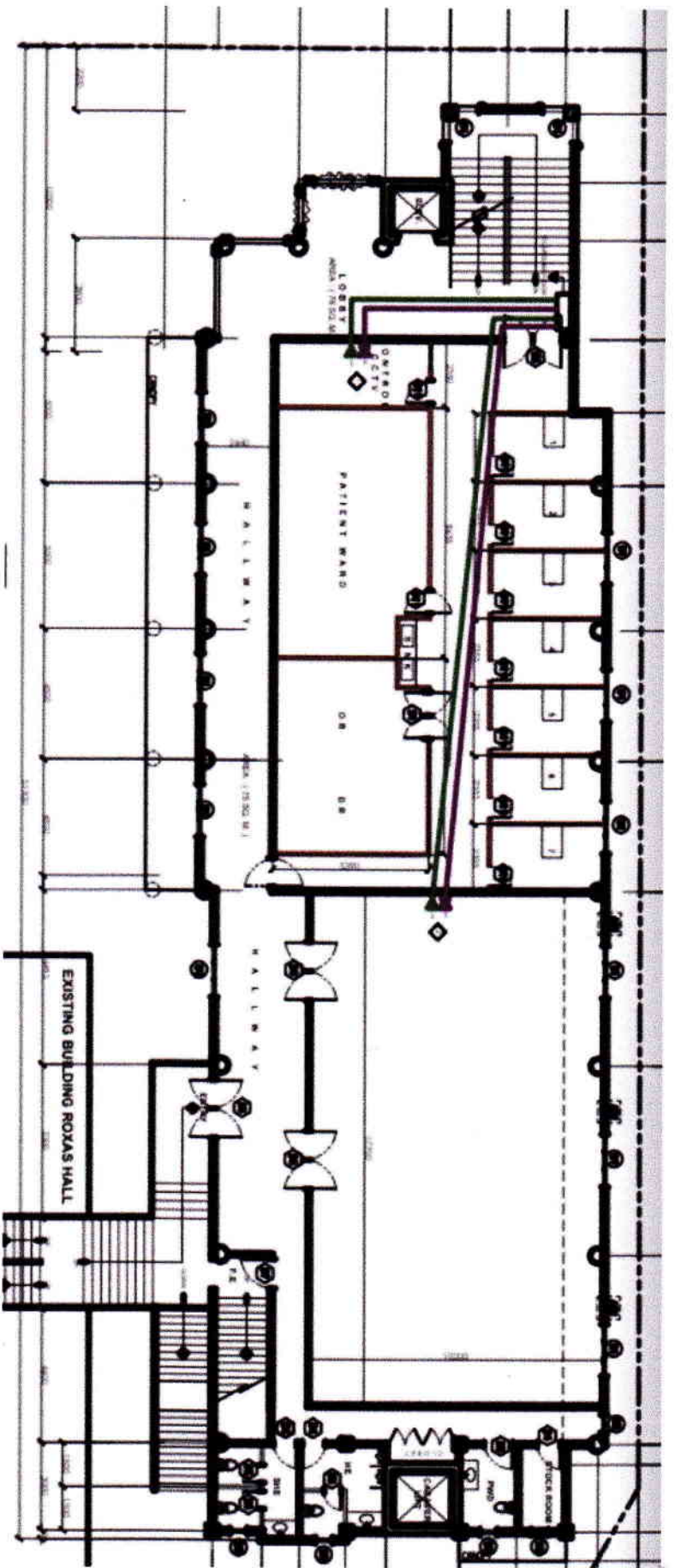
PROJECT TITLE

DRAFTED BY:  
  
**ELYN JUN A. TIOPRE**  
 Network Administrator

NOTED BY:  
  
**JOSE N. CERVANTES**  
 MIS Director

ACCEPTED BY:  
  
**O.A. GRANADA, JR., PMS**  
 Dean College of Medicine

REV: 01  
 DATE: **A**  
 5  
 18



## Annex Nodes- 2<sup>nd</sup> Flr

Proposed Annex DATA Distribution



**West Visayas State University**  
 Luna St. La Paz Iloilo City, Philippines 5000  
**MANAGEMENT INFORMATION SYSTEMS OFFICE**  
 Tel. No. 033-2208701-20871163 URL: www.wvsu.edu.ph E-mail: mso@wvsu.edu.ph

**COLLEGE OF MEDICINE IT INFRA**

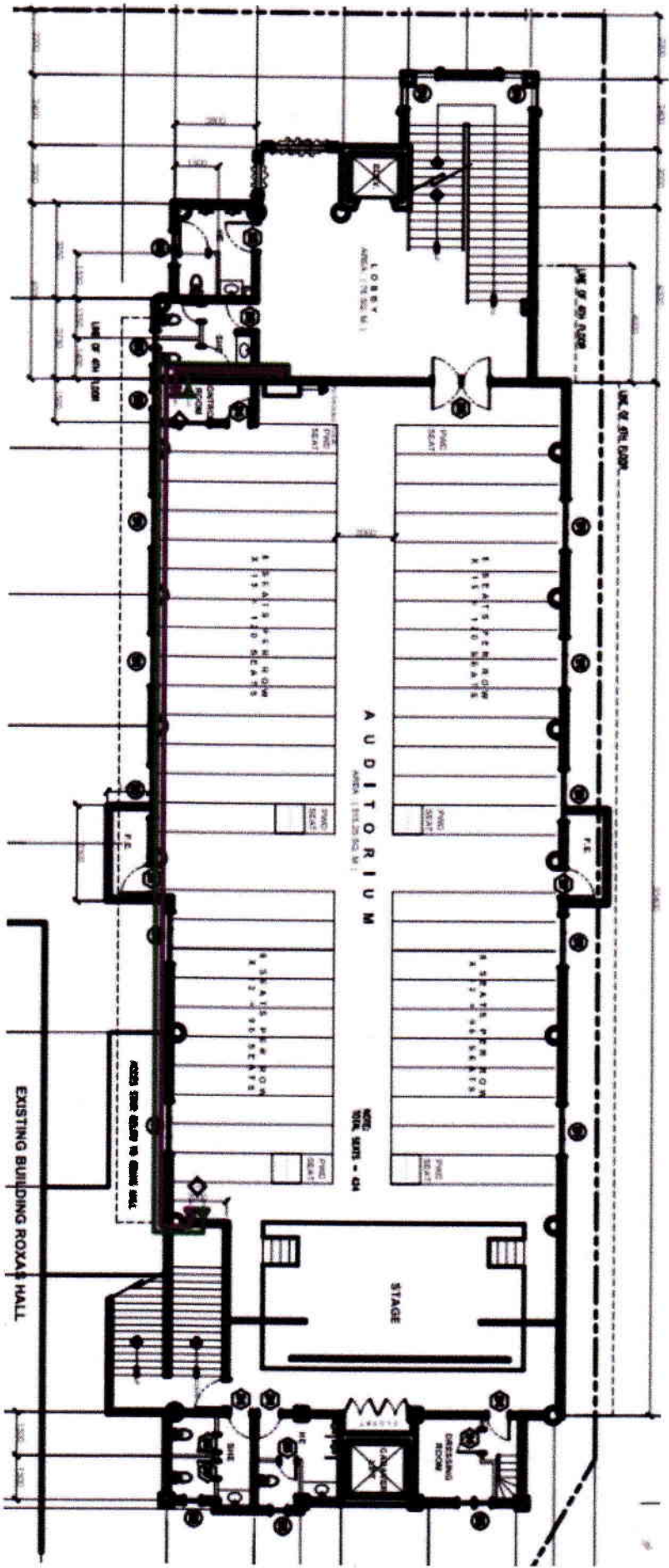
PROJECT TITLE

DRAFTED BY:  
  
**ELY JUNA TOPE**  
 Network Administrator

NOTED BY:  
  
**LOUIE CERVANTES**  
 MIS Director

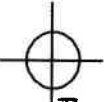
ACCEPTED BY:  
  
**DR. BERNIGNO A. COMIENZA, MD, PhD**  
 Teacher III/SGE OF

REV: 01	DATE:	NOT TO SCALE
	<b>A</b>	6 / 18



## Annex Nodes- 3<sup>rd</sup> Flr

Proposed Annex DATA Distribution



**West Visayas State University**  
 Luna St. La Paz Iloilo City, Philippines 5000  
**MANAGEMENT INFORMATION SYSTEMS OFFICE**  
 Tel. No. 033-3208708 ext. 1153 JRC, www.wvsu.edu.ph Email: msis@wvsu.edu.ph

**COLLEGE OF MEDICINE IT INFRA**

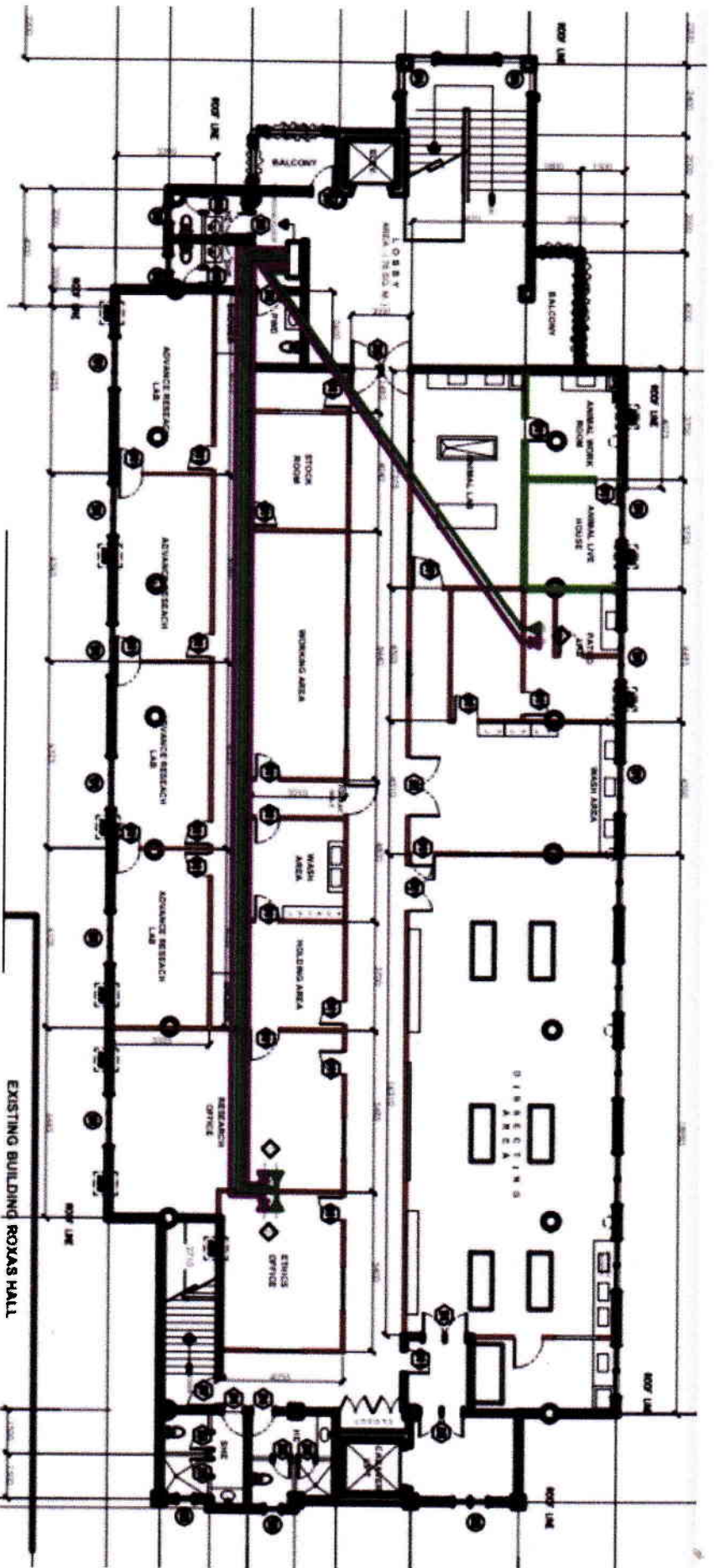
PROJECT TITLE

DRAFTED BY:  
 ELLY JUN A. TOPE  
 Network Administrator

NOTED BY:  
 JOVIE CERVANTES  
 MIS Director

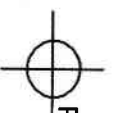
ACCEPTED BY:  
 DEAN COLLEGE OF MEDICINE

REV: 01  
 DATE: 7/18/18  
 NOT TO SCALE



## Annex Nodes- 4<sup>th</sup> Flr

Proposed Annex DATA Distribution



**West Visayas State University**  
 Luna St. La Paz Iloilo City, Philippines 5000  
**MANAGEMENT INFORMATION SYSTEMS OFFICE**  
 Tel. No. 033-3200770 local 1183 URL: www.wvsu.edu.ph Email: mso@wvsu.edu.ph

### COLLEGE OF MEDICINE IT INFRA

PROJECT TITLE

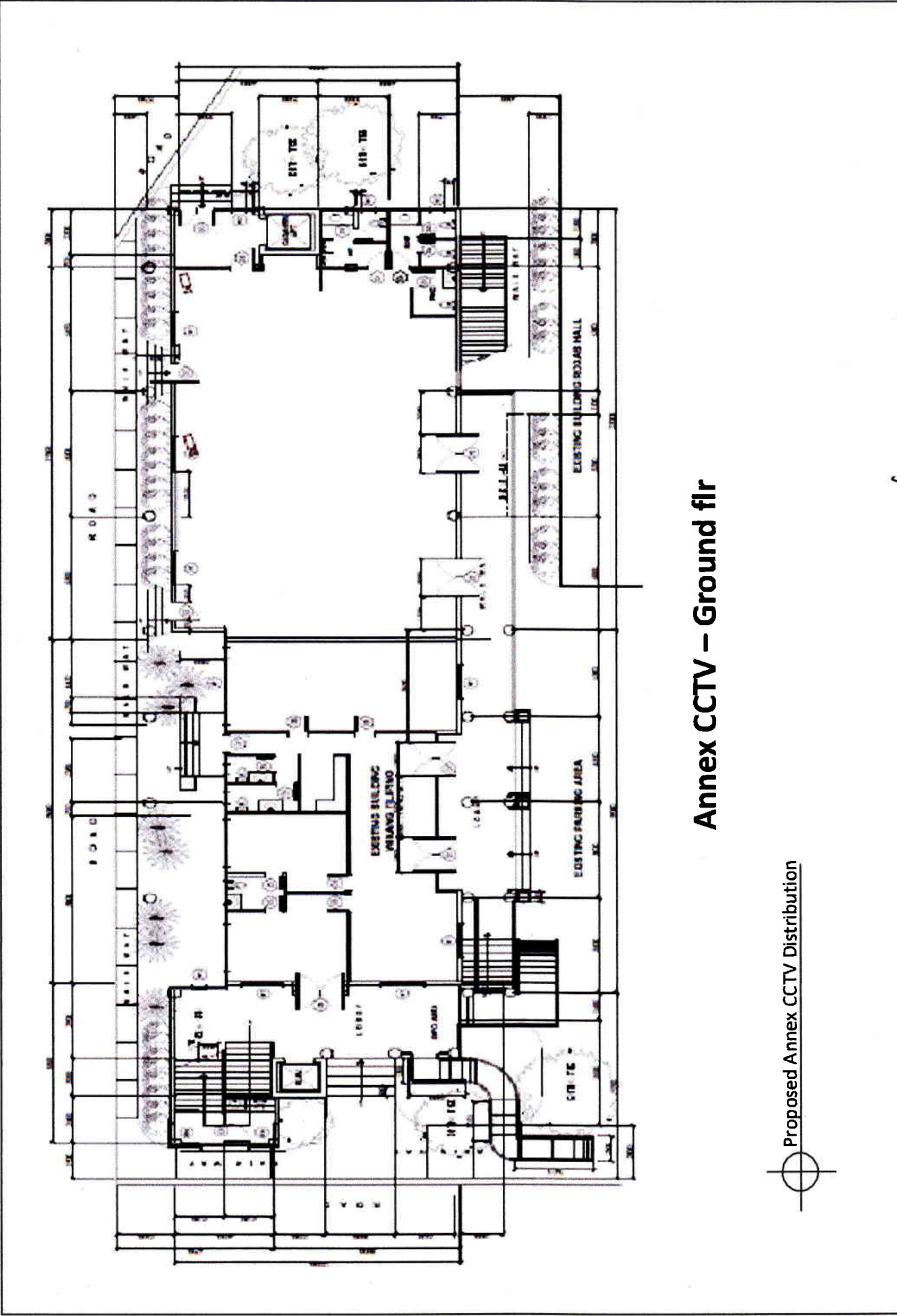
DRAFTED BY:  
*[Signature]*  
**ELLY JUN A. TIOTE**  
 Network Administrator

NOTED BY:  
*[Signature]*  
**LOUIE F. CERRANTES**  
 M. Director

ACCEPTED BY:  
*[Signature]*  
**JOSE M. SISO A. GAYMAN III**  
 DEAN/CHIEF OF DEPT.

REV: 01  
 DATE: **A**  
 8 / 18

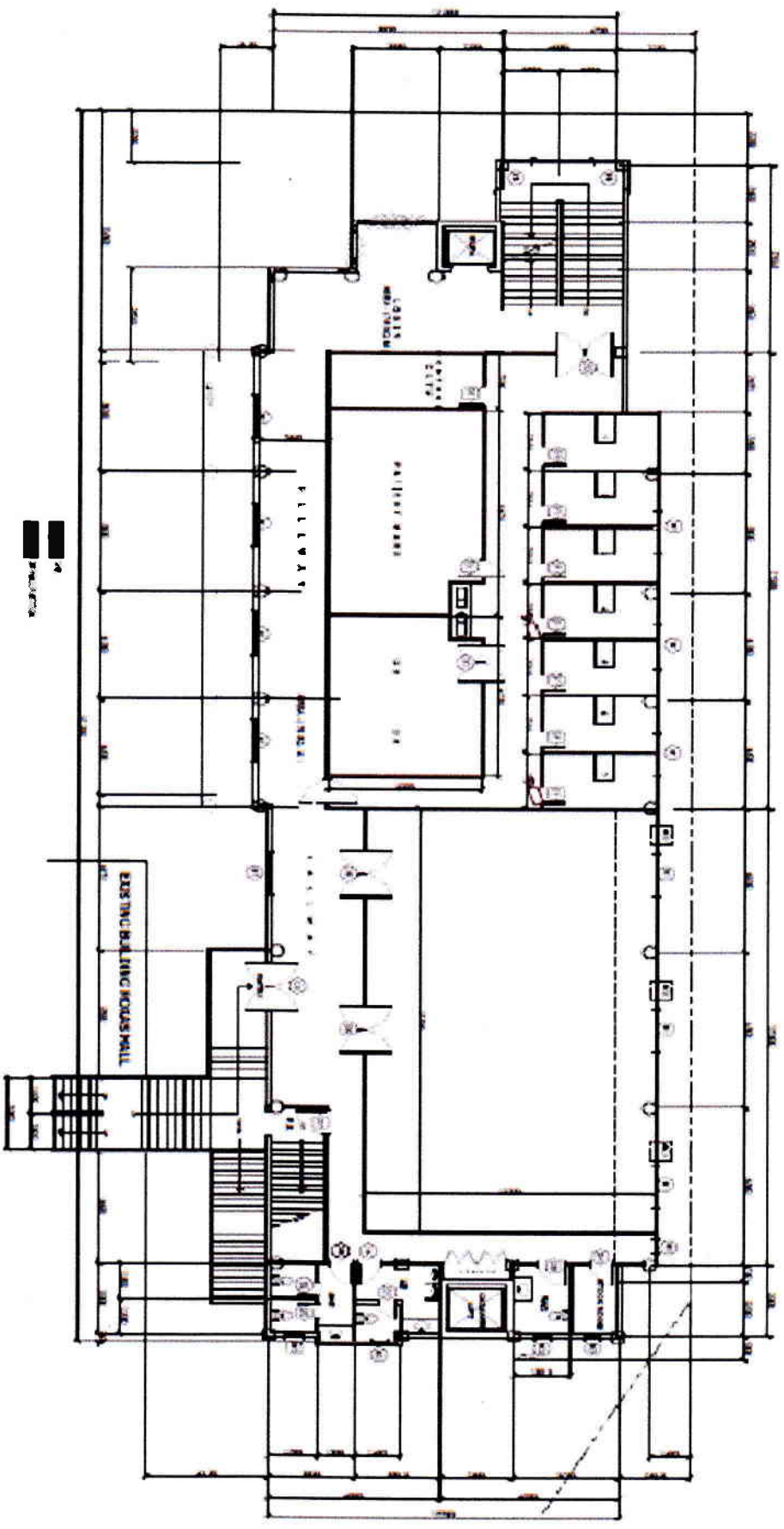




# Annex CCTV – Ground flr

Proposed Annex CCTV Distribution

 <p><b>West Visayas State University</b> Luna St. La Paz, Iloilo City, Philippines 5000 <b>MANAGEMENT INFORMATION SYSTEMS OFFICE</b> Tel. No. 033-3209670loc. 81152 URL: www.wvsu.edu.ph Email: mso@wvsa.edu.ph</p>	<p><b>COLLEGE OF MEDICINE IT INFRA</b></p> <p>PROJECT TITLE</p>	<p>DRAFTED BY:  <b>ELLY JUN A. TIPO</b> Newspk Administrator</p>	<p>NOTED BY:  <b>LOUIE F. CERVANTES</b> Mgt Director</p>	<p>ACCEPTED BY:  End-User</p>	<p>REV: 01 DATE: <b>A</b> 9 18 NOT TO SCALE</p>
--	---	---	---	--	---



## Annex CCTV – 2<sup>nd</sup> flr

Proposed Annex CCTV Distribution



**West Visayas State University**  
 Luna St. La Paz Iloilo City, Philippines 5000  
**MANAGEMENT INFORMATION SYSTEMS OFFICE**  
 Tel. No. 033-320070 local 1183 URL: www.wvstate.edu.ph Email: mif@wvstate.edu.ph

**COLLEGE OF MEDICINE IT INFRA**

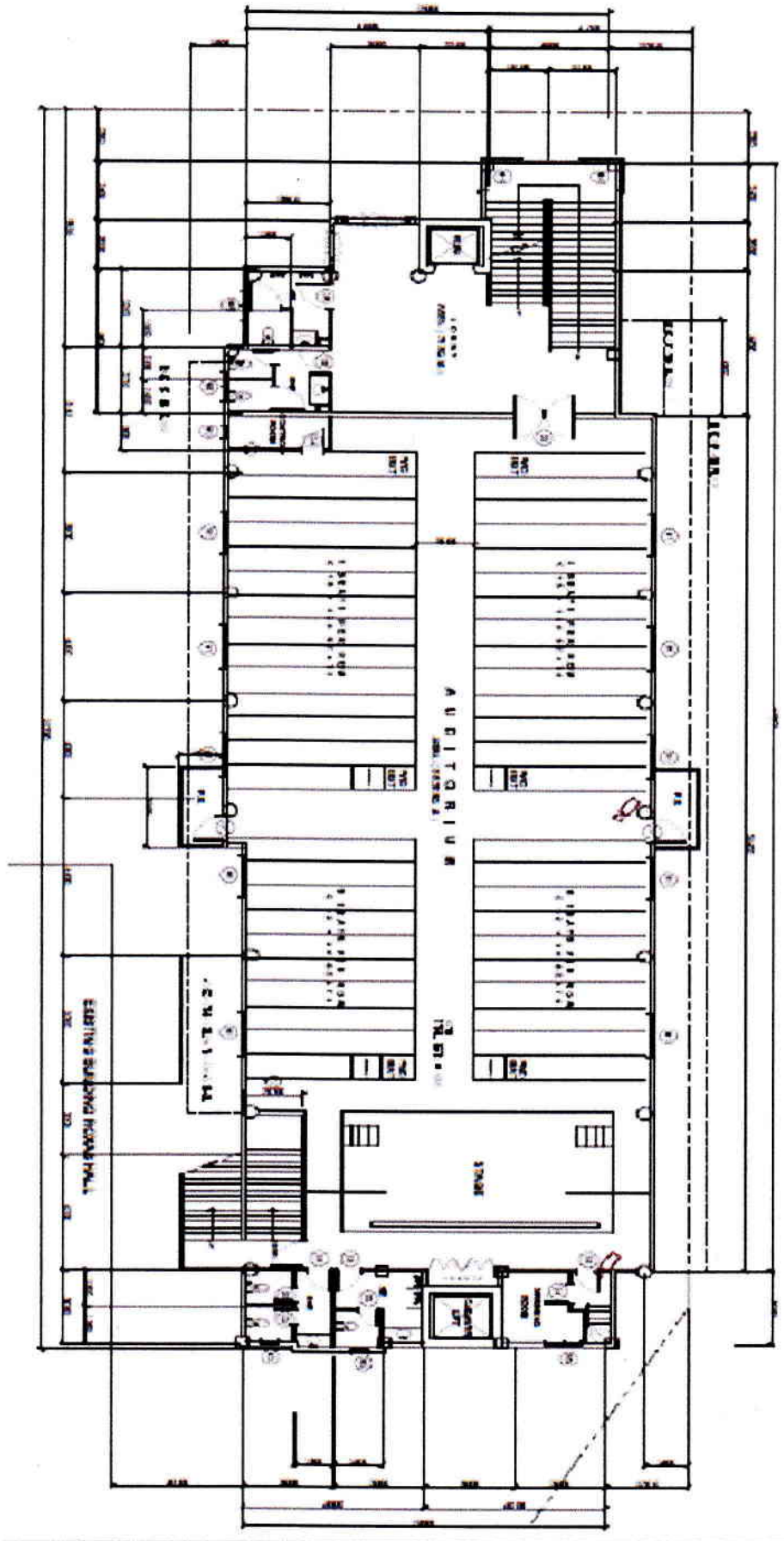
PROJECT TITLE

DRAFTED BY:  
*ELIV LUNA TOPE*  
 Netw. Administrator

NOTED BY:  
*RODIE A. SERVANTES*  
 MIS Director

ACCEPTED BY:  
*[Signature]*  
 O.A. Cepeda, M.D., PhD  
 President of C.O.M.

REV: 01  
 DATE: **A** 10 18  
 NOT TO SCALE



## Annex CCTV - 3<sup>rd</sup> flr

Proposed Annex CCTV Distribution



**West Visayas State University**  
 Luna St. La Paz Iloilo City, Philippines 5000  
**MANAGEMENT INFORMATION SYSTEMS OFFICE**  
 Tel. No. 053-220870 local 1183 URL: www.wvsu.edu.ph Email: mso@wvsu.edu.ph

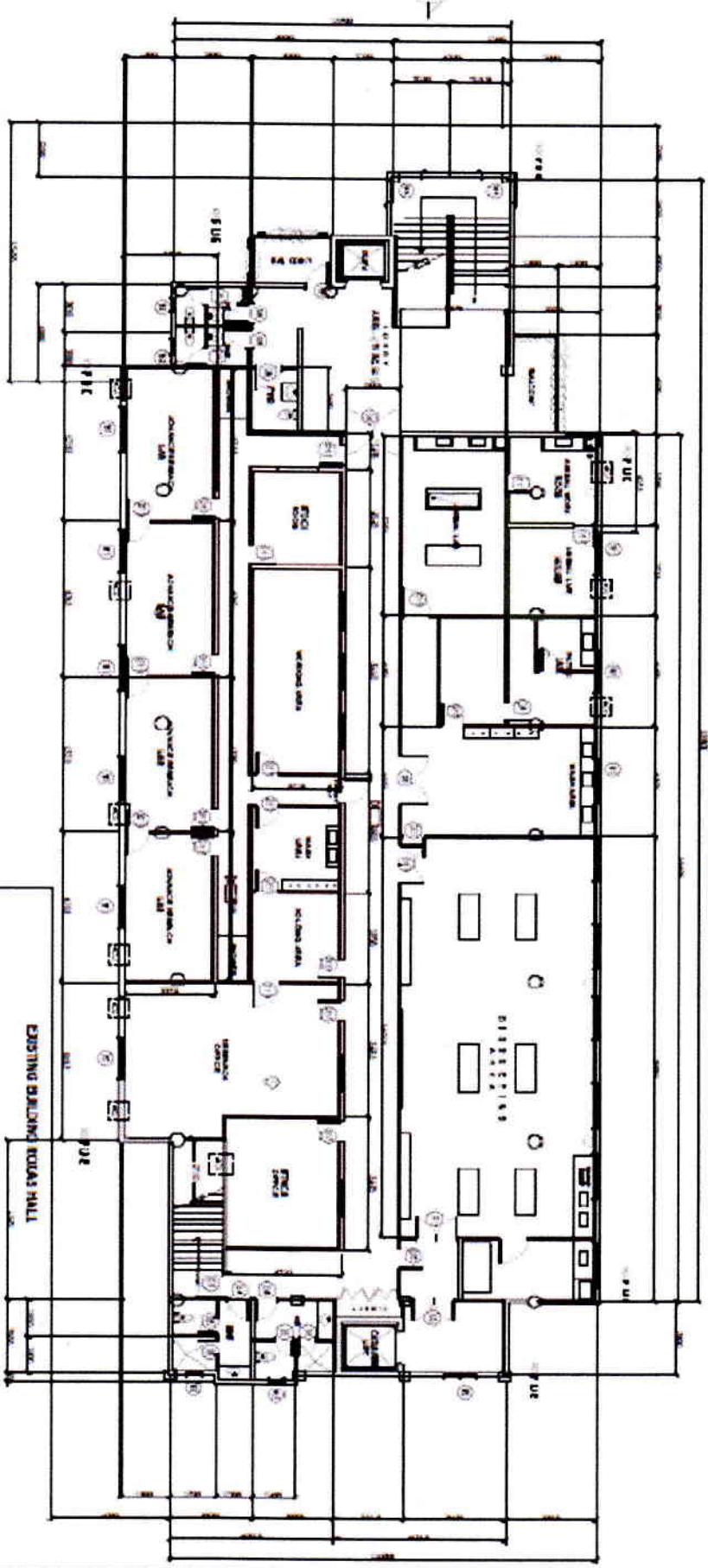
**COLLEGE OF MEDICINE IT INFRA**  
 PROJECT TITLE

DRAFTED BY:  
 ELLY JUNA A. TOPE  
 Network Administrator

NOTED BY:  
 ROUIE CERVANTES  
 MIS Director

ACCEPTED BY:  
 RICHARD A. CERVANTES  
 Head User

REV: 01  
 DATE: 11/18  
 NOT TO SCALE



# Annex CCTV – 4<sup>th</sup> flr

Proposed Annex CCTV Distribution



**West Visayas State University**  
 Luna St. La Paz Iloilo City, Philippines 5000  
**MANAGEMENT INFORMATION SYSTEMS OFFICE**  
 Tel. No. 033-320870 local 1183 URL: www.wv.edu.ph Email: mso@wv.edu.ph

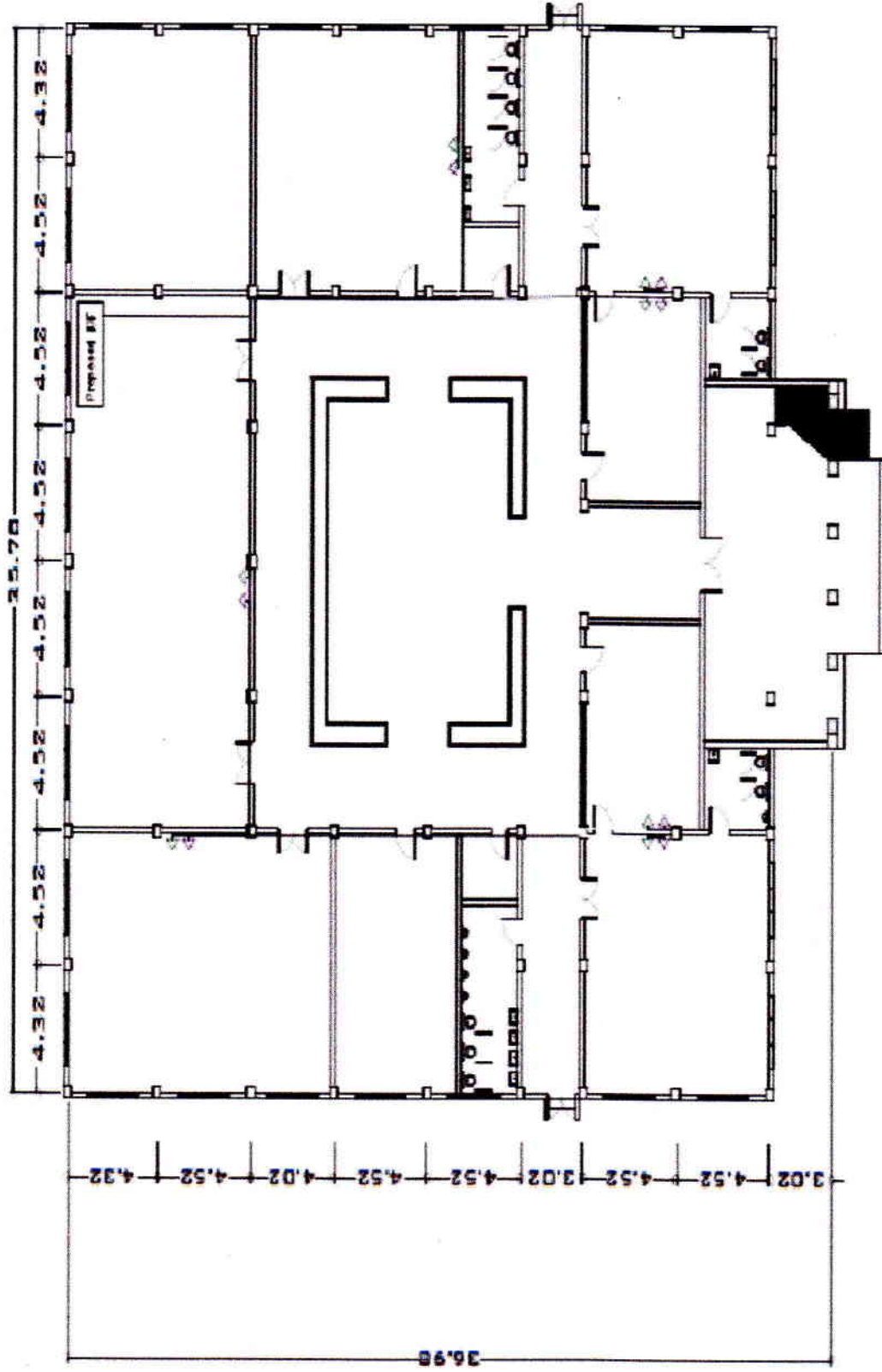
**COLLEGE OF MEDICINE IT INFRA**

**DRAFTED BY:**  
 ELYAN A. TOPE  
 Network Administrator

**NOTED BY:**  
 LOLLIE P. ORIVANTES  
 MSN Vector

**ACCEPTED BY:**  
 JOSEPH S. GALAN  
 DEAN COLLEGE OF MEDICINE

**REV: 01**  
**DATE:**  
**A** 12 18  
 NOT TO SCALE



Proposed Roxas DATA Distribution

Roxas Nodes – Ground flr



**West Visayas State University**  
Luna St. La Paz Iloilo City, Philippines 5000  
**MANAGEMENT INFORMATION SYSTEMS OFFICE**  
Tel. No. 033-320870 local 1193 URL: www.wvsu.edu.ph Email: mls@wvsu.edu.ph

**COLLEGE OF MEDICINE IT INFRA**

PROJECT TITLE

DRAFTED BY  
ELLY IUN A. TIPOE  
Network Administrator

NOTED BY:  
BOJIEF GERVANTES  
MID Director

ACCEPTED BY:  
[Signature]  
Dr. End-User: [Signature]

REV: 01  
DATE:  
A 18

NOT TO SCALE 1/8



**West Visayas State University**  
 Luna St. La Paz Iloilo City, Philippines 5000  
**MANAGEMENT INFORMATION SYSTEMS OFFICE**  
 Tel. No. 033-2587310 ext. 153 URL: www.wvsu.edu.ph/central\_mis@wvsu.edu.ph

**COLLEGE OF MEDICINE IT INFRA**

PROJECT TITLE

DRAFTED BY:

*Ellen Juna Tiopé*  
 ELLI JUN A. TIOPÉ  
 Net System Administrator

NOTED BY:

*Leopoldo B. Benavantes*  
 LEOPOLDO B. BENAVENTES  
 MTD Director

ACCEPTED BY:

*Dr. Roldan A. Cervantes*  
 ROLDAN A. CERVANTES  
 DPM, COLLEGE OF MEDICINE

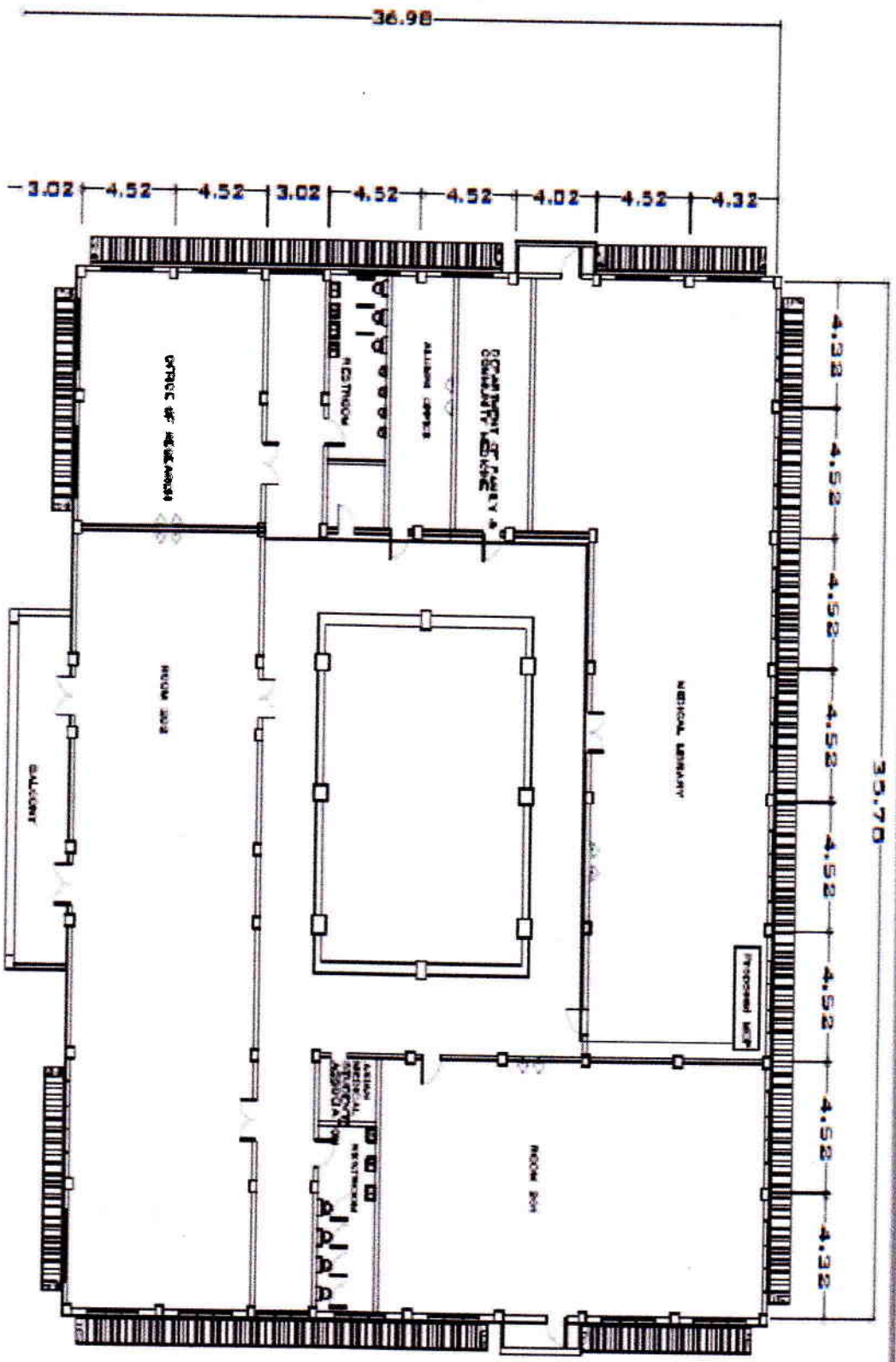
REV: 01

DATE:

**A** 14 18  
 NOT TO SCALE

Proposed Roxas DATA Distribution

**Roxas Nodes – 2<sup>nd</sup> flr**





**West Visayas State University**  
 Luna St. La Paz Iloilo City, Philippines 5000  
**MANAGEMENT INFORMATION SYSTEMS OFFICE**  
 Tel. No. 033-3208870 local 1153 (M-F), www.wvsu.edu.ph Email: mis@wvsu.edu.ph

**COLLEGE OF MEDICINE IT INFRA**

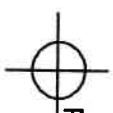
PROJECT TITLE

DRAFTED BY:  
*[Signature]*  
**ELLY JUN A. TIOTE**  
 Network Administrator

NOTED BY:  
*[Signature]*  
**LOUIE F. DEBAYANES**  
 MIS Director

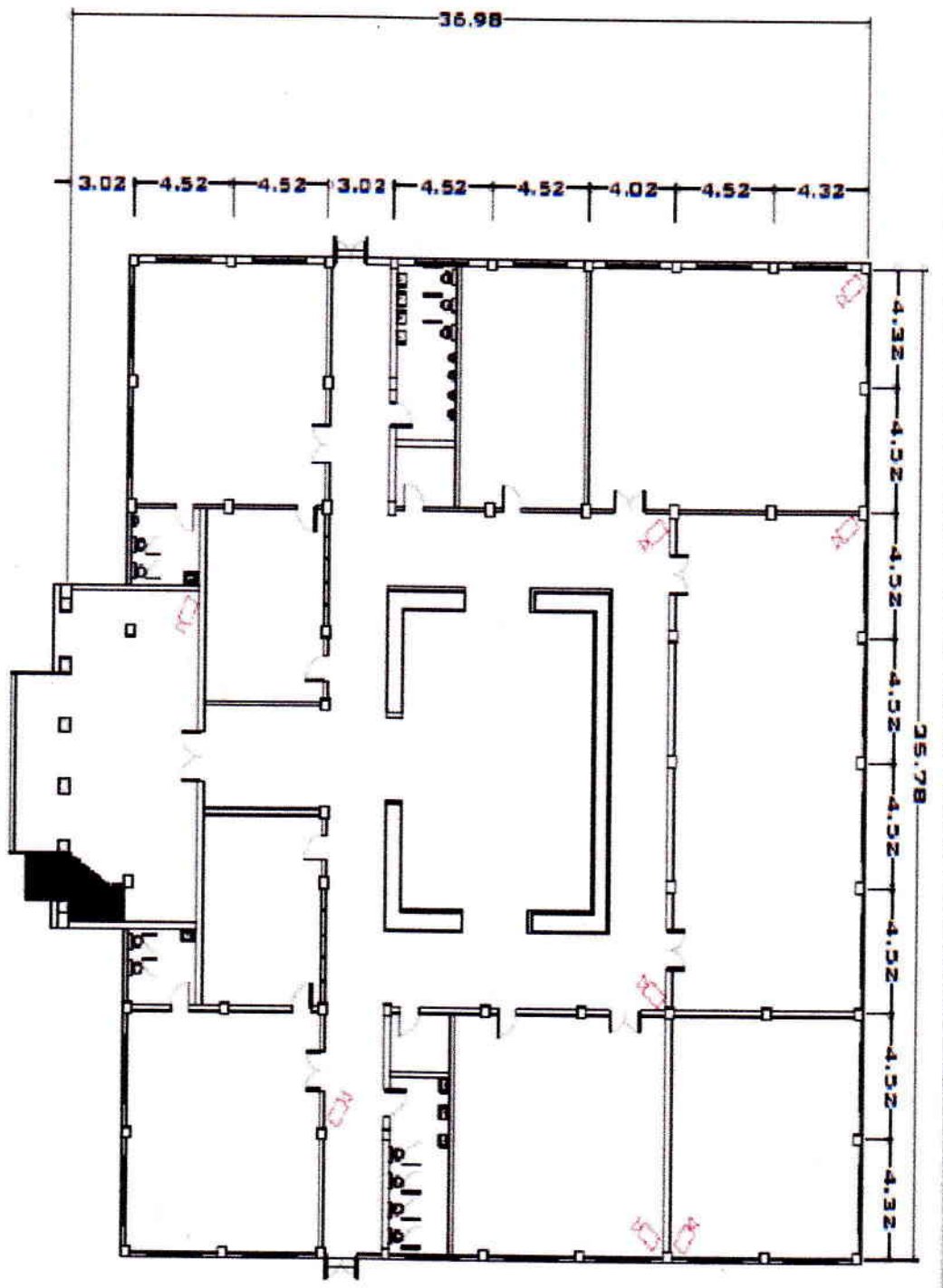
ACCEPTED BY:  
*[Signature]*  
**JOSE M. ANDA, JR.**  
 Director, College of Medicine

REV: 01  
 DATE: **A** 15 / 18  
 NOT TO SCALE



Proposed Roxas CCTV Distribution

**Roxas CCTV--Ground flr**





**West Visayas State University**  
 Lane St. La Paz Igdio City, Philippines 5000  
**MANAGEMENT INFORMATION SYSTEMS OFFICE**  
 Tel. No. 035-220870 to 08411163 URL: www.wvsu.edu.ph/ems/it/office/

**COLLEGE OF MEDICINE IT INFRA**

PROJECT TITLE

DRAFTED BY:  
*[Signature]*  
**ELY J. N. A. TIPOE**  
 Network Administrator

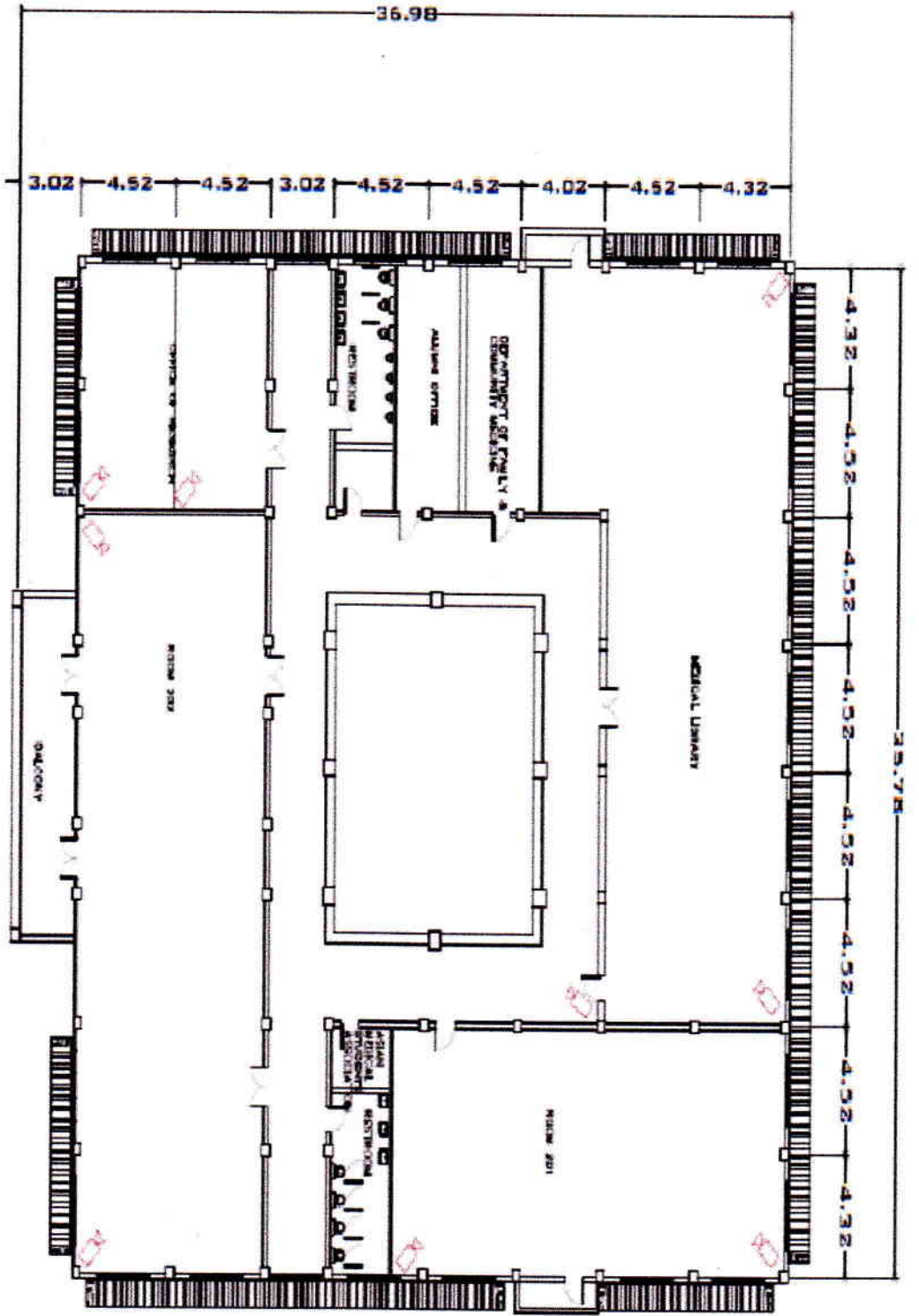
NOTED BY:  
*[Signature]*  
**LOUIE A. CERVAANTES**  
 MIS Director

ACCEPTED BY:  
*[Signature]*  
**ROBERTO A. CERVANTES, JR.**  
 Engr. in Charge of College of Medicine

REV: 01  
 DATE: **16**  
 NOT TO SCALE: **18**



**RoxasCCTV--2<sup>nd</sup> flr**







**West Visayas State University**  
Luna St. La Paz Ilijo City, Philippines 5000  
**MANAGEMENT INFORMATION SYSTEMS OFFICE**  
Tel. No. 033-3208970 local 1163 URL: www.wvstu.edu.ph/e-mail: mis@wvstu.edu.ph

**COLLEGE OF MEDICINE IT INFRA**

PROJECT TITLE

DRAFTED BY:  
*Ely Jun A. Tiopé*  
**ELY JUN A. TIOPÉ**  
Network Administrator

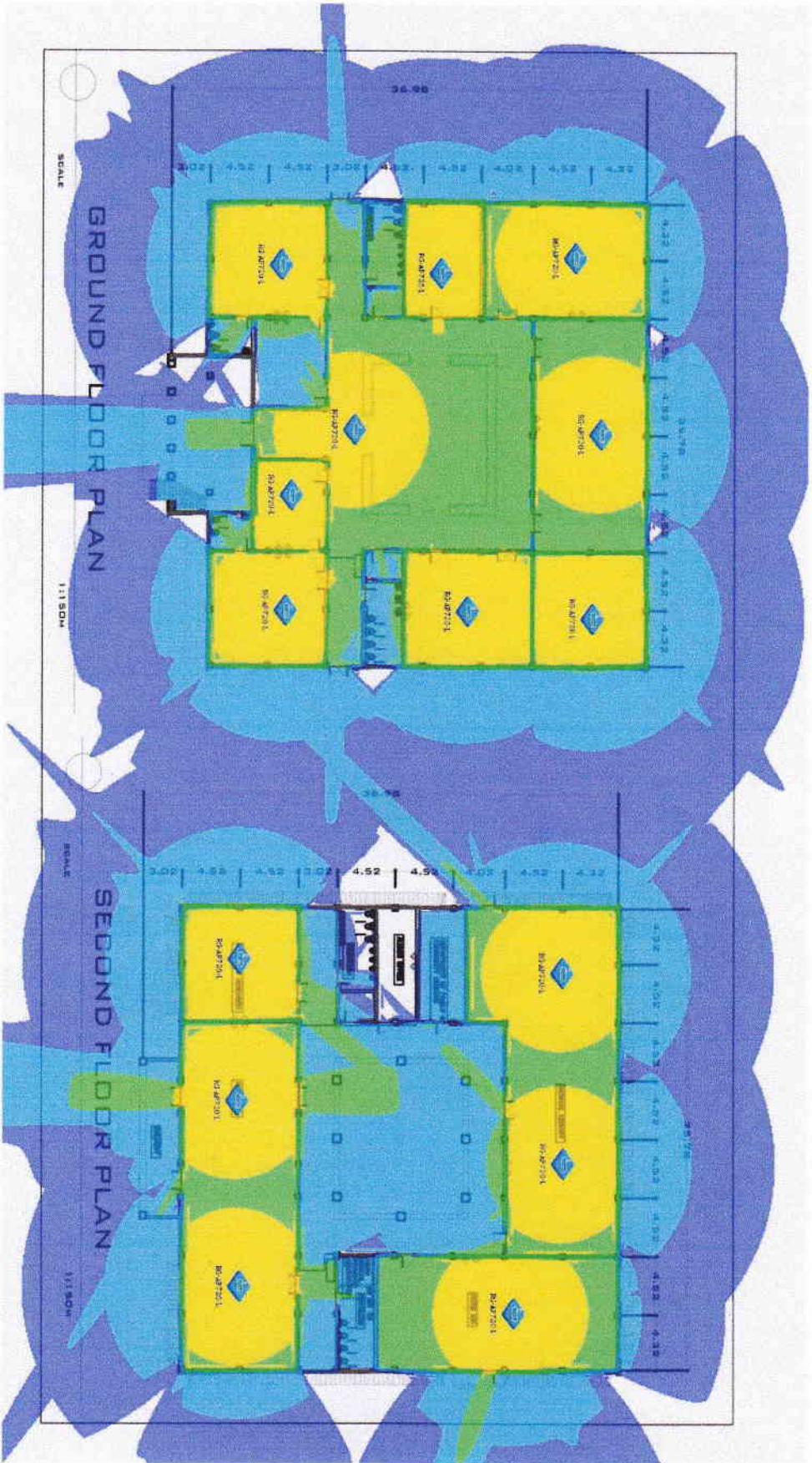
NOTED BY:  
*Rosendo A. Girona, Jr.*  
**ROSENDO A. GIRONA, JR.**  
MIS Director

ACCEPTED BY:  
*Rosendo A. Girona, Jr.*  
**ROSENDO A. GIRONA, JR.**  
MIS Director

REV: 01  
DATE: **A** 17/18  
NOT TO SCALE



Proposed Roxas AP's Distribution





**West Visayas State University**  
 Luna St. La Paz Ilogto City, Philippines 6000  
**MANAGEMENT INFORMATION SYSTEMS OFFICE**  
 Tel. No. 035-320879 local 1153; URL: www.wvsu.edu.ph; Email: mso@wvsu.edu.ph

**COLLEGE OF MEDICINE IT INFRA**

PROJECT TITLE

DRAFTED BY:

*Elly Luna A. Tiopé*  
**ELLY LUNA A. TIOPÉ**  
 Network Administrator

NOTED BY:

*Ady E. Guinavantes*  
**ADY E. GUINAVANTES**  
 MIS Director

ACCEPTED BY:

*Dean A. Guinayon*  
**DEAN A. GUINAYON**  
 DEAN, COLLEGE OF MEDICINE

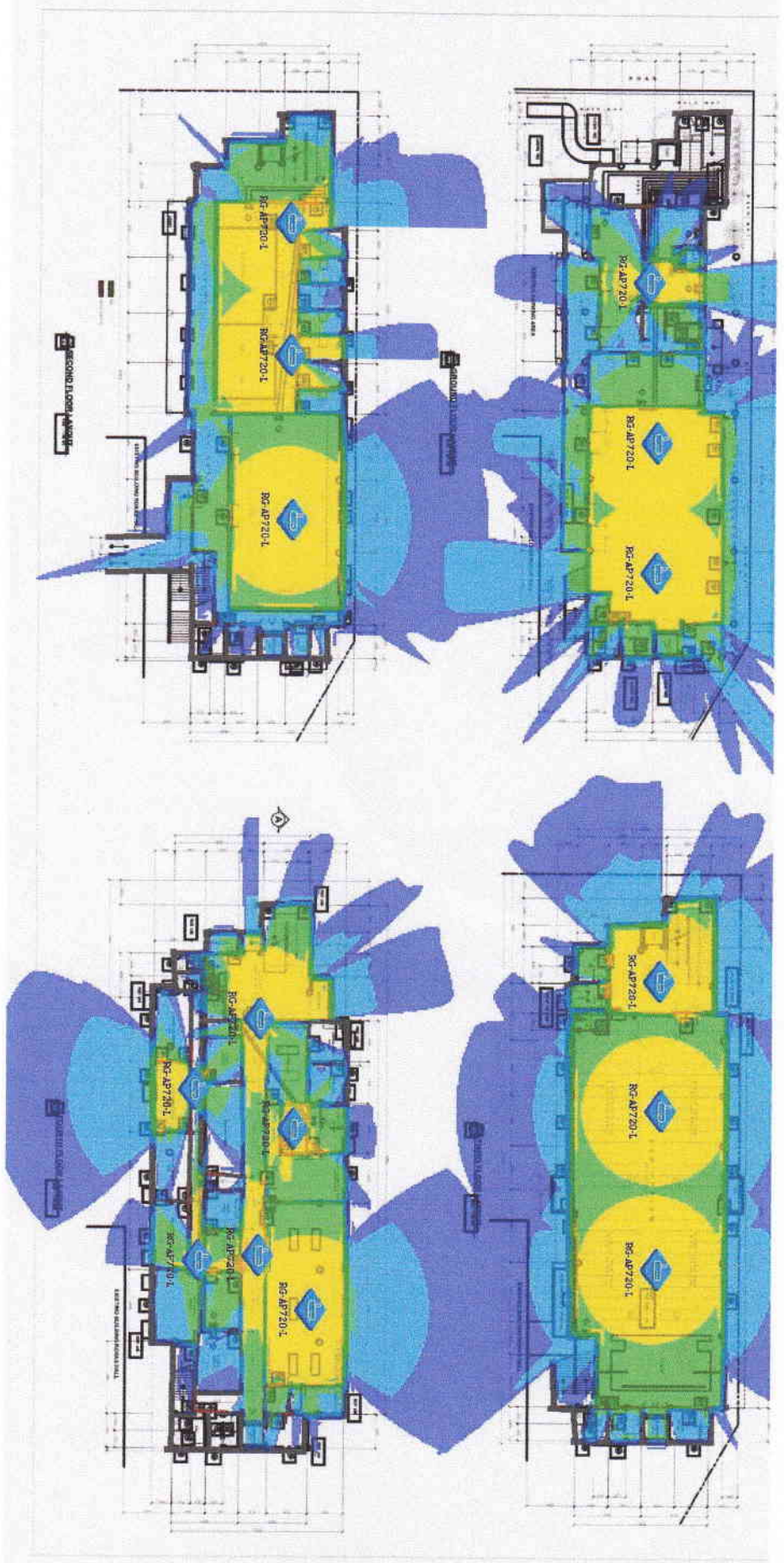
REV: 01

DATE:

**A** 18 18  
 NOT TO SCALE



Proposed Annex AP's Distribution



**LEGEND:**

